



Cisco WAP Wireless Access Points

Easy Setup Guide



You can easily set up your WAP in this step-by-step guide.

- 1 Connecting WAP
- 2 Installing FindIT
- 3 Configuring WAP

1 Connecting WAP

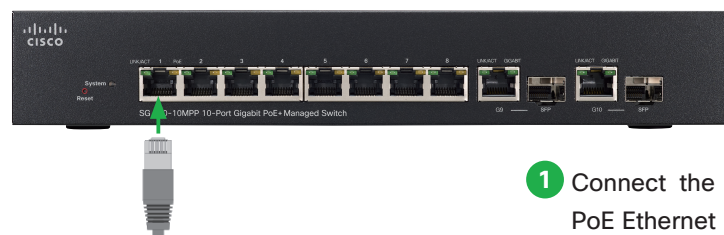
1-1 Before You Begin

Before you begin the installation, make sure that you have the following equipment:

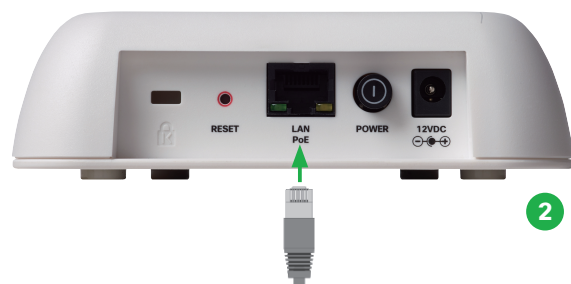
- WAP
- Network Switch with PoE
- Ethernet Cable
- PC

Connect the PC to the same network as the switch.

1-2 Connecting the WAP to the Network



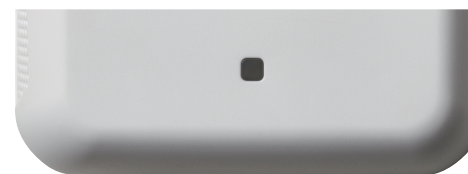
- 1 Connect the Ethernet cable to the PoE Ethernet port of the switch.



- 2 Connect the other end of the Ethernet cable to the Ethernet port of the WAP.

⚠ Caution: Cisco 100/300 Series Wireless Access Points

If PoE is not provided, plug in the supplied power adapter to provide power to the WAP. The power adapter is supplied with 100 series, sold separately for 300 series. The Gigabit PoE injector is available too, this is useful for extended cable runs, or when using a non-PoE switch..



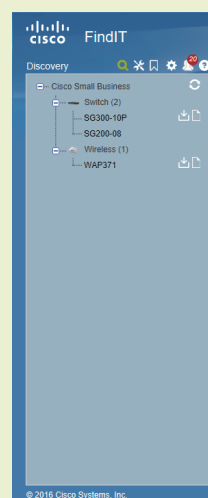
- 3 Check the state of the LED.

After the LED on the front panel is changed from blinking to lighting, install the Cisco FindIT Network Discovery Utility to the PC by following steps.

MEMO

It is recommended to install the Cisco FindIT in this guide. By Cisco FindIT, even if the IP address of the WAP is unknown or changed, you can easily access to the web-based Configuration Utility of WAP. In addition, you can:

- Access to the web-based Configuration Utility of other devices, such as Cisco Small Business Switches and Routers.
- Download new firmware updates to the PC with just a few clicks.
- View basic reports, including inventory, maintenance, and end-of-life reports.



MEMO

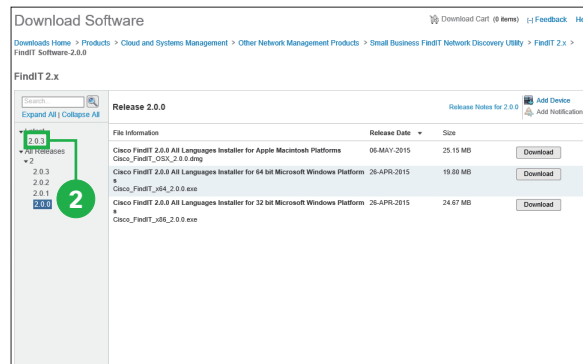
If you want to configure the WAP without the Cisco FindIT, you must:

- Locate the IP address of the WAP assigned by your DHCP server, and enter the IP address in the web browser.
- Locate the SSID (CiscoSB-Setup) of the WAP by using wireless clients, and use the 'cisco123' passkey to access the WAP.

After accessing to the web-based Configuration Utility of WAP by any of the methods, proceed to "3-1 Logging in to Configuration Utility", ③.

2 Installing FindIT

To configure the WAP, use the Cisco FindIT Network Discovery Utility to access to the web-based Configuration Utility. Follow these steps to download the Cisco FindIT from Cisco.com and install it to the PC.

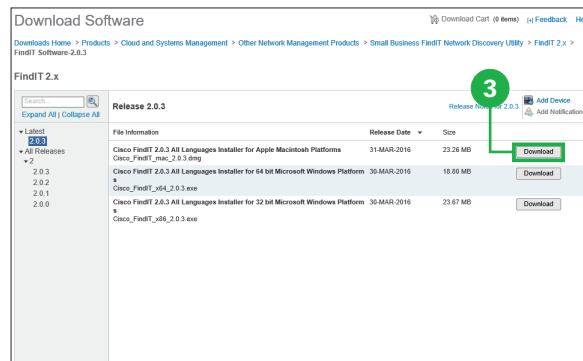


- 1 Enter the URL into a web browser address bar.

<http://www.cisco.com/jp/go/findit/download>



- 2 Click the latest version under [Latest] on the left pane.



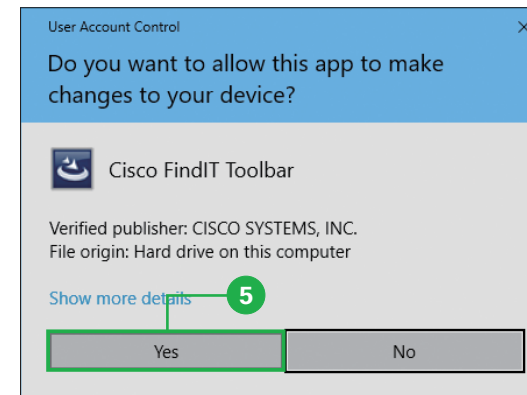
- 3 Select the appropriate installer for your OS, and click [Download].

MEMO

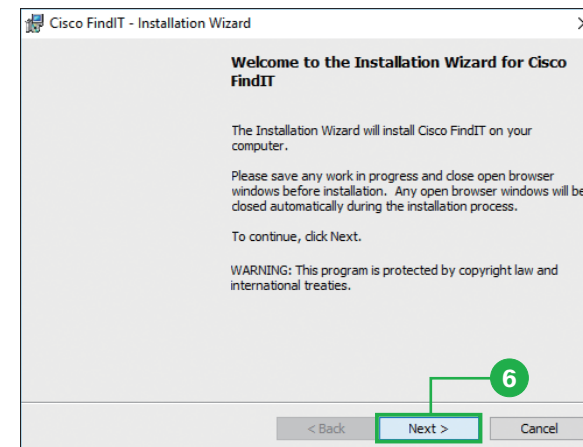
To find out if your computer is running a 32-bit or 64-bit version of Windows, go to [Control Panel] - [System and Security] - [System].

2 Installing FindIT

- 4 Run the installer.
- 5 Click [Yes].

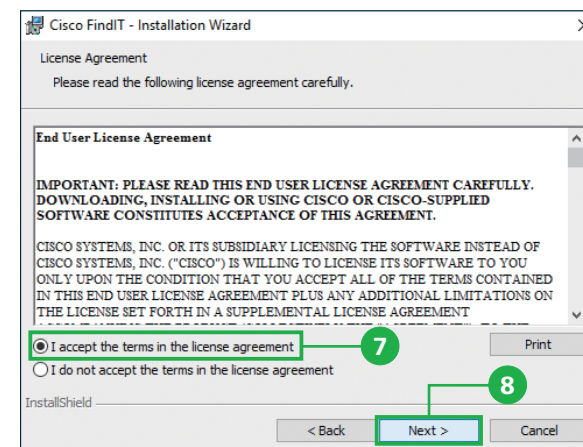


- 6 Click [Next].

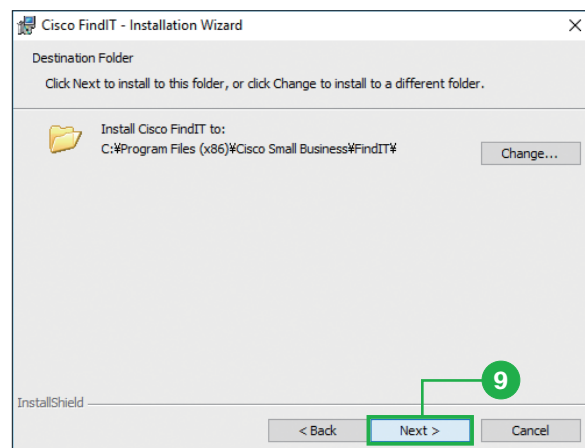


- 7 Select [I accept the terms in the license agreement].

- 8 Click [Next].

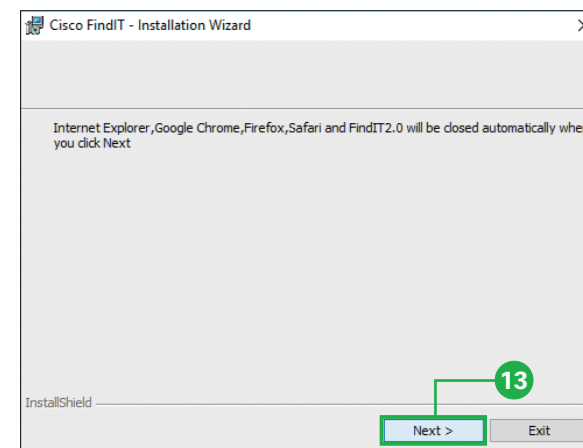


2 Installing FindIT



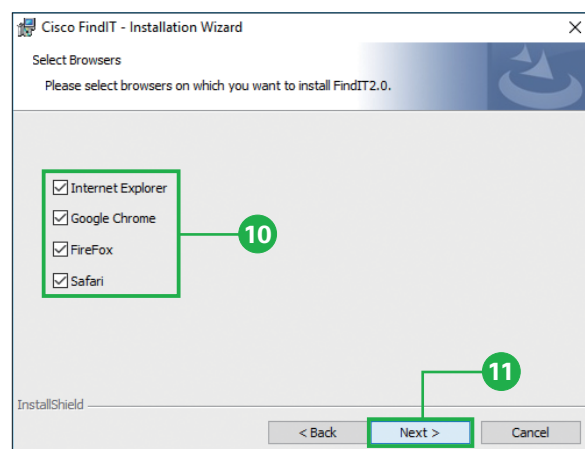
9 Click [Next].

If you want to change the default installation folder, click [Change] and enter or choose the desired installation folder.



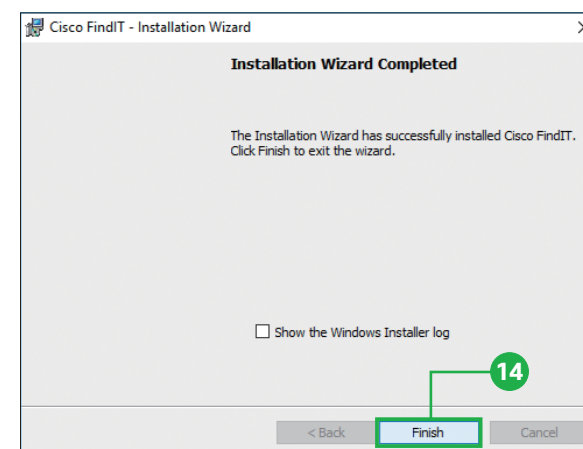
13 Click [Next].

Wait until the next window appears.



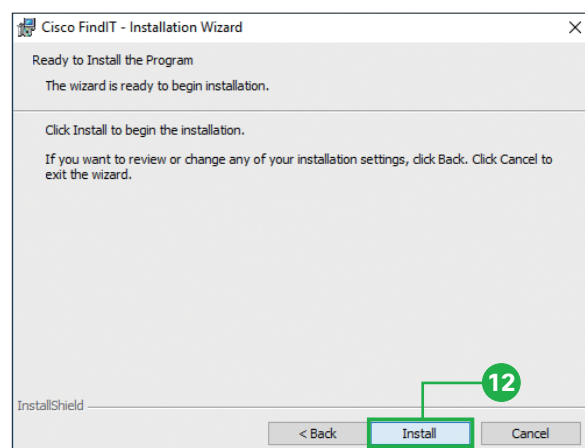
10 Select browsers on which you want to install Cisco FindIT.

11 Click [Next].



14 Click [Finish].

After installation is done, launch the Cisco FindIT and configure WAP by following steps.



12 Click [Install].

Caution

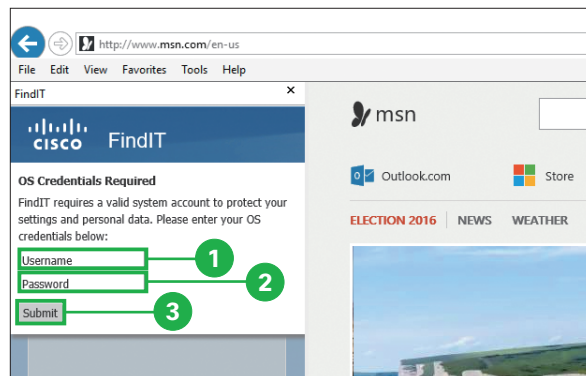
Your PC must meet the following requirements to run Cisco FindIT.

- Operating system:
 - Microsoft Windows 7, 8, 8.1, or 10
 - Apple OS X 10.8 or later
- Browser
 - Apple Safari Version 7 or later (OS X), or Version 5 or later (Windows)
 - Google Chrome Version 34 or later
 - Microsoft Internet Explorer Version 10 or later
 - Mozilla Firefox 30 or later

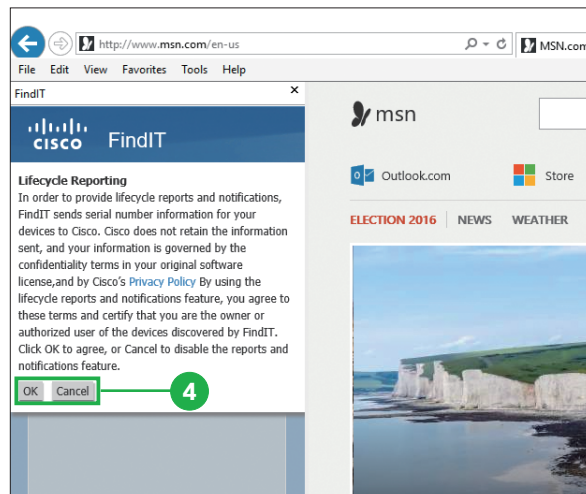
3 Configuring WAP

3-1 Logging in to Configuration Utility

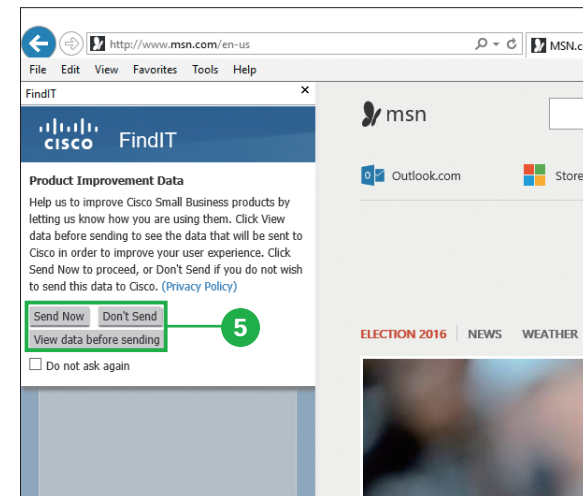
Now you can launch the CiscoFindIT with your web browser or from the list of installed applications, and you can easily find and log in to the Configuration Utility of WAP from your web browser



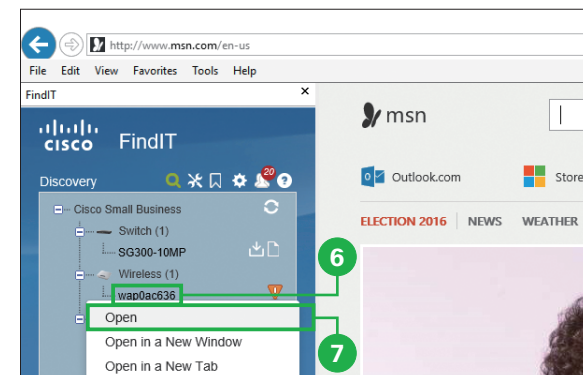
- 1 Enter your username used for logging in to your OS.
- 2 Enter your password used for logging in to your OS.
- 3 Click [Submit].



- 4 Click [OK] to enable "Lifecycle Reporting" or [Cancel] to disable.



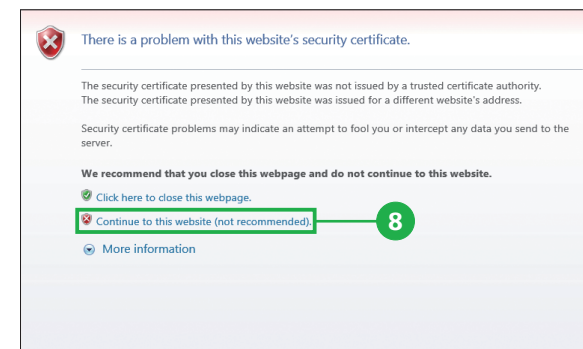
- 5 Click [Send Now] to help "Product Improvement data" or [Don't send] not to do. You can view data before sending by clicking [View data before sending].



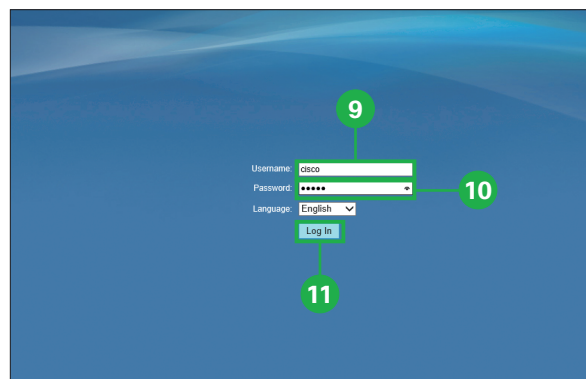
- 6 Right-click the WAP

The WAP is typically shown as [wap...] under [Wireless] in the Device Discovery sidebar.

- 7 Click [Open].



- 8 Click [Continue to this website (not recommended)].



9 Enter “cisco” in the [User-name].

10 Enter “cisco” in the [Password].

11 Click [Log In].

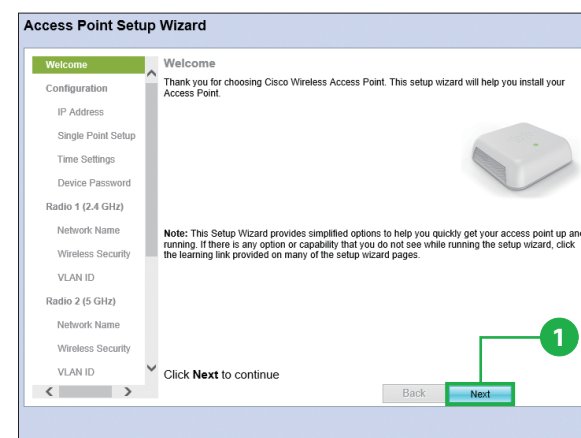
The Access Point Setup Wizard window appears.

MEMO

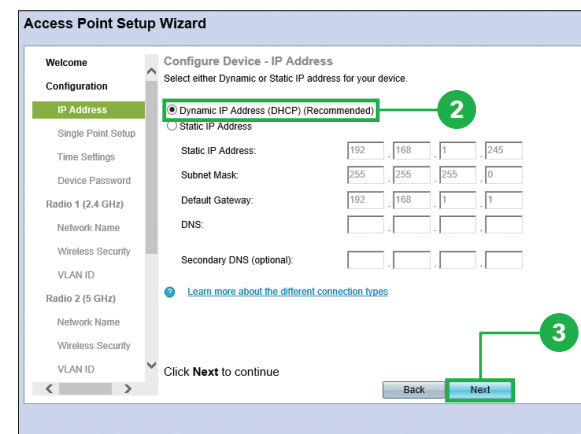
The factory default user name and password are **cisco**.

3-2 Configuring Device

After logging in to the Configuration Utility, the Access Point Setup Wizard automatically appears to help you perform initial configuration.



1 Click [Next].



2 Click [Dynamic IP Address (DHCP) (Recommended)].

3 Click [Next].

If you want to configure the IP address manually, click [Static IP Address] and enter the IP information in each field.

MEMO

With Firefox and Internet Explorer, the CiscoFindIT appears in a sidebar adjacent to the content area of the browser. With Chrome, Safari, and the CiscoFindIT application, the CiscoFindIT appears in a separate window.

3 Configuring WAP

Access Point Setup Wizard

Welcome

Configuration

- ✓ IP Address
- ✓ Single Point Setup

Single Point Setup

A cluster provides a single point of administration and lets you view, deploy, configure, and secure the wireless network as a single entity, rather than as a series of separate wireless devices.

☐ New Cluster Name
Recommended for a new deployment environment.

New Cluster Name:

AP Location:

☒ Do not Enable Single Point Setup
Recommended for adding new wireless access points to the existing deployment environment.

Learn more about single point setup

Click **Next** to continue

Back Next

4 Click [Do not Enable Single Point Setup].

5 Click [Next].

Caution: Cisco WAP131

The WAP 131 does not support the Single Point Setup, skip this step.

Access Point Setup Wizard

Welcome

Configuration

- ✓ IP Address
- ✓ Single Point Setup
- Time Settings

Configure Device - Set System Date And Time

Enter the time zone, date and time.

Time Zone:

Set System Time: ☒ Network Time Protocol (NTP) ☐ Manually

NTP Server 1:

NTP Server 2:

NTP Server 3:

NTP Server 4:

Learn more about time settings

Click **Next** to continue

Back Next

7 Click [Network Time Protocol (NTP)].

8 Click [Next].

You can also configure the system clock manually.

Access Point Setup Wizard

Welcome

Configuration

- ✓ IP Address
- ✓ Single Point Setup
- Time Settings

Configure Device - Set System Date And Time

Enter the time zone, date and time.

Time Zone:

Set System Time: ☒ Network Time Protocol (NTP) ☐ Manually

NTP Server 1:

NTP Server 2:

NTP Server 3:

NTP Server 4:

Learn more about time settings

Click **Next** to continue

Back Next

6 Select the time zone for your location.

Access Point Setup Wizard

Welcome

Configuration

- ✓ IP Address
- ✓ Single Point Setup
- Time Settings
- Device Password

Configure Device - Set Password

The administrative password protects your access point from unauthorized access. For security reasons, you should change the access point password from its default settings. Please write this password down for future reference.

Enter a new device password:

New Password:

Confirm Password:

Password Strength Meter:

Password Complexity: ☒ Enable

Learn more about passwords

Click **Next** to continue

Back Next

9 Enter a password in the [New Password].

10 Enter it again in the [Confirm Password].

11 Click [Next].

The Configure Radio 1 - Name Your Wireless Network window appears.

MEMO

The Password Complexity enabled by default requires the password to conform to the following complexity settings:

- Is different from the user name.
- Is different from the current password.
- Has a minimum length of eight characters.
- Contains characters from at least three character classes (uppercase letters, lowercase letters, numbers, and special characters available on a standard keyboard).

3-3

Configuring Radio 1

The WAP contains two radios (2.4 GHz & 5 GHz), each radio functions as an independent wireless access point. Configure Radio 1 first, then Radio 2.

Access Point Setup Wizard

Welcome

Configuration

- ✓ IP Address
- ✓ Single Point Setup
- ✓ Time Settings
- ✓ Device Password

Radio 1 (2.4 GHz)

Network Name

Enter a name for your wireless network:

Network Name (SSID): **1**

For example: MyNetwork

2

Click **Next** to continue

Back Next

1 Enter a SSID in the [Network Name (SSID)].

2 Click [Next].

Access Point Setup Wizard

Welcome

Configuration

- ✓ IP Address
- ✓ Single Point Setup
- ✓ Time Settings
- ✓ Device Password

Radio 1 (2.4 GHz)

Wireless Security

Select your network security strength:

- 3** ☒ **Best Security (WPA2 Personal - AES)**
Recommended for new wireless computers and devices that support this option. Older wireless devices might not support this option.
- ☐ Better Security (WPA/WPA2 Personal - TKIP/AES)
Recommended for older wireless computers and devices that might not support WPA2.
- ☐ No Security (Not recommended)

Enter a security key with 8-63 characters:

4

Strong

☒ Show Key as Clear Text

5

Click **Next** to continue

Back Next

3 Click [Best Security (WPA2 Personal - AES)].

4 Enter a security key.

5 Click [Next].

Caution

Not all the WAPs have two radios. If you use the WAP121, WAP321 or WAP551, skip "3-4 Configuring Radio 2".

3 Configuring WAP

6 Enter a VLAN ID.

By default, the VLAN ID assigned to the management interface for your access point is 1.

7 Click [Next].

The Configure Radio 2 - Name Your Wireless Network window appears.

Access Point Setup Wizard

Welcome

Configuration

- ✓ IP Address
- ✓ Single Point Setup
- ✓ Time Settings
- ✓ Device Password

Radio 1 (2.4 GHz)

Wireless Security

VLAN ID

Enter a VLAN ID for your wireless network:

VLAN ID: **6**

Range: 1 - 4094

7

Click **Next** to continue

Back Next

3-4

Configuring Radio 2

Configure Radio 2.

Access Point Setup Wizard

Welcome

Configuration

- ✓ IP Address
- ✓ Single Point Setup
- ✓ Time Settings
- ✓ Device Password

Radio 1 (2.4 GHz)

Wireless Security

Radio 2 (5 GHz)

Network Name

Enter a name for your wireless network:

Network Name (SSID): **1**

For example: MyNetwork

2

Click **Next** to continue

Back Next

1 Enter a SSID in the [Network Name (SSID)].

2 Click [Next].

Access Point Setup Wizard

Welcome

Configuration

- ✓ IP Address
- ✓ Single Point Setup
- ✓ Time Settings
- ✓ Device Password
- ✓ Network Name
- ✓ Wireless Security
- ✓ VLAN ID
- ✓ Radio 1 (2.4 GHz)
- ✓ Radio 2 (5 GHz)
- ✓ Network Name
- ✓ Wireless Security
- ✓ VLAN ID

Configure Radio 2 - Secure Your Wireless Network

Select your network security strength.

3 ☒ **Best Security (WPA2 Personal - AES)**
Recommended for new wireless computers and devices that support this option. Older wireless devices might not support this option.

☐ Better Security (WPA/WPA2 Personal - TKIP/AES)
Recommended for older wireless computers and devices that might not support WPA2.

☐ No Security (Not recommended)

Enter a security key with 8-63 characters:

4Klm7Iq2sptd **4**

☒ Show Key as Clear Text

[Learn more about your network security options](#)

Click **Next** to continue

5 **Next**

3 Click [Best Security (WPA2 Personal - AES)].

4 Enter a security key.

5 Click [Next].

Access Point Setup Wizard

Welcome

Configuration

- ✓ IP Address
- ✓ Single Point Setup
- ✓ Time Settings
- ✓ Device Password
- ✓ Network Name
- ✓ Wireless Security
- ✓ VLAN ID
- ✓ Radio 1 (2.4 GHz)
- ✓ Radio 2 (5 GHz)
- ✓ Network Name
- ✓ Wireless Security
- ✓ VLAN ID

Configure Radio 2 - Assign The VLAN ID For Your Wireless Network

By default, the VLAN ID assigned to the management interface for your access point is 1, which is also the default untagged VLAN ID. If the management VLAN ID is the same as the VLAN ID assigned to your wireless network, then the wireless clients associated with this specific wireless network can administer this device. If needed, an access control list (ACL) can be created to disable administration from wireless clients.

Enter a VLAN ID for your wireless network:

VLAN ID: 1 **6** (Range: 1 - 4094)

[Learn more about vlan ids](#)

Click **Next** to continue

7 **Next**

6 Enter a VLAN ID.

7 Click [Next].

The Enable Captive Portal - Create Your Guest Network window appears.

3-5 Configuring Guest Network

Use Captive Portal to set up a guest network, which means that wireless users need to be authenticated before they can access the Internet.

Access Point Setup Wizard

Welcome

Configuration

- ✓ IP Address
- ✓ Single Point Setup
- ✓ Time Settings
- ✓ Device Password
- ✓ Radio 1 (2.4 GHz)
- ✓ Network Name
- ✓ Wireless Security
- ✓ VLAN ID
- ✓ Radio 2 (5 GHz)
- ✓ Network Name
- ✓ Wireless Security
- ✓ VLAN ID

Enable Captive Portal - Create Your Guest Network

Use Captive Portal to set up a guest network, which means that wireless users need to be authenticated before they can access the Internet. For example, a hotel can create a guest network to redirect new wireless users to a page for authentication.

Do you want to create your guest network now?

1 ☒ **Yes**

☐ No, thanks

[Learn more about captive portal guest networks](#)

Click **Next** to continue

2 **Next**

1 Click [Yes].

2 Click [Next].

If you do not want to create a guest network, Click [No] and skip to "3-6 Confirming Settings" on the page 19.

Access Point Setup Wizard

Welcome

Configuration

- ✓ IP Address
- ✓ Single Point Setup
- ✓ Time Settings
- ✓ Device Password
- ✓ Radio 1 (2.4 GHz)
- ✓ Network Name
- ✓ Wireless Security
- ✓ VLAN ID
- ✓ Radio 2 (5 GHz)
- ✓ Network Name
- ✓ Wireless Security
- ✓ VLAN ID

Enable Captive Portal - Name Your Guest Network

Your guest network needs a new name, known as SSID. The name identifies your guest network so that wireless users can find it.

Enter a name for your guest network:

3 ☒ **Radio 1 (2.4 GHz)**

☐ Radio 2 (5 GHz)

4 Guest Network name: ciscosb-guest

For example: MyGuestNetwork

[Learn more about network names](#)

Click **Next** to continue

5 **Next**

3 Click [Radio 1] or [Radio 2] in which you would like to place the guest network.

4 Enter a SSID in the [Guest Network Name].

5 Click [Next].

Access Point Setup Wizard

Welcome

Enable Captive Portal - Secure Your Guest Network

Select your network security strength.

6 **Best Security (WPA2 Personal - AES)**
Recommended for new wireless computers and devices that support this option. Older wireless devices might not support this option.

☐ Better Security (WPA/WPA2 Personal - TKIP/AES)
Recommended for older wireless computers and devices that might not support WPA2.

☐ No Security (Not recommended)

Enter a security key with 8-63 characters

7 **guest_8Zas5bd** Strong

☒ Show Key as Clear Text

[Learn more about your network security options](#)

8 **Next**

Click **Next** to continue

6 Click [Best Security (WPA2 Personal - AES)].

7 Enter a security key.

8 Click [Next].

Access Point Setup Wizard

Welcome

Enable Captive Portal - Assign The VLAN ID

We strongly recommend that you assign different VLAN ID for your guest network than the management VLAN ID. By doing that, your guest will have no access to your private network.

Enter a VLAN ID for your guest network:

9 **1** (Range: 1 - 4094)

[Learn more about vlan ids](#)

10 **Next**

Click **Next** to continue

9 Enter a VLAN ID.

10 Click [Next].

Caution

The guest network VLAN ID should be different from the business VLAN ID. If both the guest SSID and business SSID are on the same VLAN, then clients on these networks can communicate together.

11 Click [Next].

If you want to redirect wireless users to a webpage after they log on to the guest network, check [Enable Redirect URL] and enter the URL.

Access Point Setup Wizard

Welcome

Enable Captive Portal - Enable Redirect URL

If you enable a redirect URL, when new wireless users have completed the authentication process, they can be redirected to an alternate startup page.

☐ Enable Redirect URL

Redirect URL:

[Learn more about redirect urls](#)

11 **Next**

Click **Next** to continue

3-6 Confirming Settings

Review the settings that you configured, save and enable them on the WAP.

Access Point Setup Wizard

Welcome

Summary - Confirm Your Settings

Configuration

✓ IP Address

✓ Single Point Setup

✓ Time Settings

✓ Device Password

Radio 1 (2.4 GHz)

✓ Network Name

✓ Wireless Security

✓ VLAN ID

Radio 2 (5 GHz)

✓ Network Name

✓ Wireless Security

✓ VLAN ID

1 **Submit**

2 **Submit**

Click **Submit** to enable settings on your Cisco Wireless Access Point

1 Scroll down to view the settings.

2 Click [Submit].

Wait until Device Setup Complete window appears.

Access Point Setup Wizard

Welcome

Device Setup Complete

✓ Congratulations, your access point has been set up successfully. We strongly recommend that you save these settings by writing them down or by copying and pasting them into a text document. You will need these settings later when you add other wireless computers or devices to your network.

Cluster Name: cisco-cb-cluster

Radio 1 (2.4 GHz)

Network Name (SSID): cisco-cb

Network Security Type: WPA2 Personal - AES

Security Key: 4Km7g2sjto

Radio 2 (5 GHz)

Network Name (SSID): cisco-cb

Network Security Type: WPA2 Personal - AES

Security Key: 4Km7g2sjto

3 **Finish**

Click **Finish** to close this wizard.

3 Click [Finish].

Your WAP has been set up successfully.

Appendix | Where to Go From Here

■ Support

- Cisco Support Community
<http://www.cisco.com/go/smallbizsupport>
- Cisco Support and Resources
<http://www.cisco.com/go/smallbizhelp>
- Phone Support Contacts
http://www.cisco.com/en/US/support/tsd_cisco_small_business_support_center_contacts.html
- Cisco Firmware Downloads
<http://www.cisco.com/go/smallbizfirmware>
- Cisco Open Source Requests
http://www.cisco.com/go/smallbiz_opensource_request
- Cisco Partner Central
<http://www.cisco.com/web/partners/sell/smb>
- Cisco Online Device Emulators
<http://www.cisco.com/go/onlinevicemanagers>

■ Product Documentation

- Cisco 100 Series Wireless Access Points Administration Guide
http://www.cisco.com/go/100_wap_resources
- Cisco 300 Series Wireless Access Points Administration Guide
http://www.cisco.com/go/300_wap_resources
- Cisco 500 Series Wireless Access Points Administration Guide
http://www.cisco.com/go/500_wap_resources
- Cisco Wireless Accessories
http://www.cisco.com/go/wap_accessories