



ESPIADINHA



•**Tópico**- Laboratórios CCNA e CCNP em aulas remotas utilizando o emulador CML2 da Cisco

Dê uma espiadinha no que será apresentado ao vivo pelo especialista, Prof. Dr, Moisés Nisenbaum, nesta quinta-feira **08 de Outubro, 2020**.

Registre-se agora: http://bit.ly/CLMeb_1008



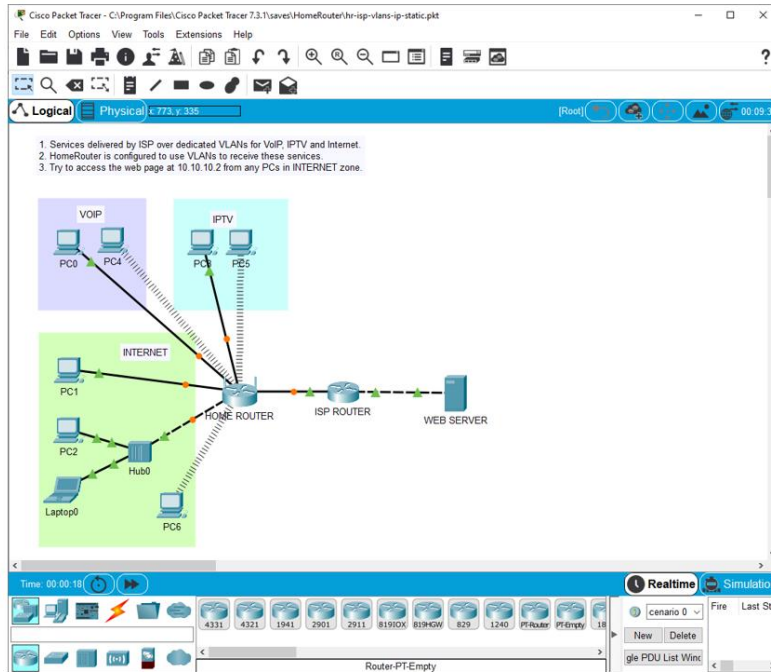
ESPIADINHA

AGENDA:

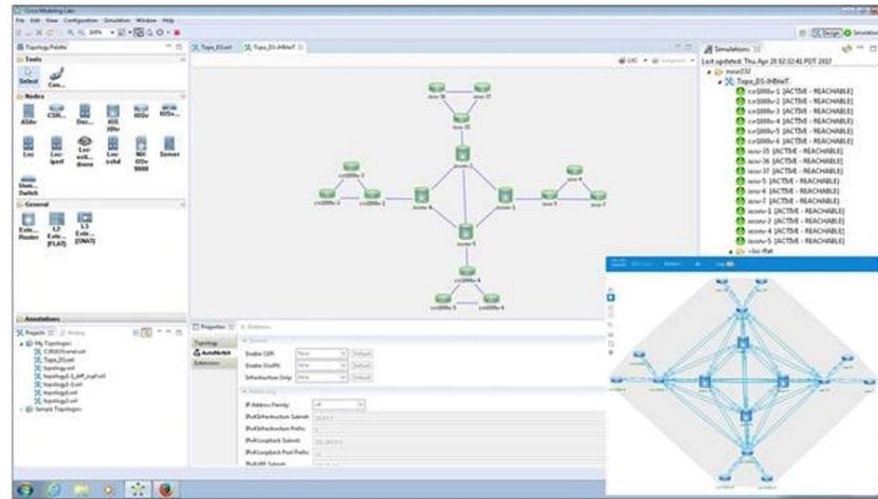
- Ensino remoto de Redes: é viável?
- Simuladores e Emuladores
- Demonstração 1: CML instalação local
- Demonstração 2: CML DevNet Sandbox



ESPIADINHA



Cisco Packet Tracer



VIRL & VM Maestro

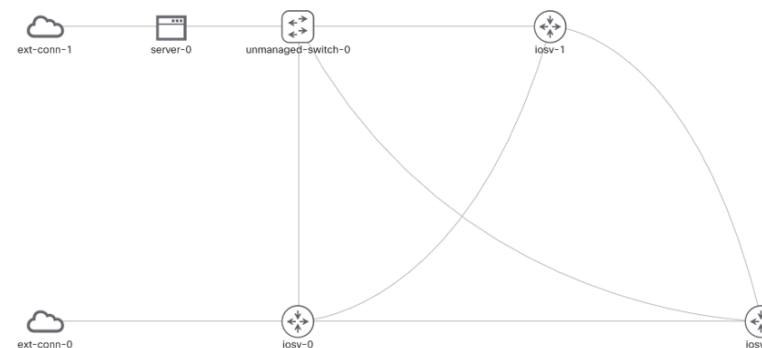
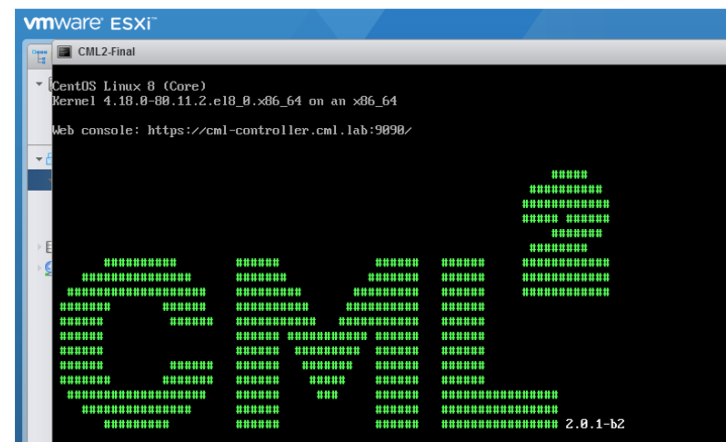




ESPIADINHA

Demonstração 1:
CML instalação
local

© 2020 Cisco and/or its affiliates. All rights reserved. Cisco Confidential





ESPIADINHA

Demonstração 2: CML DevNet Sandbox

The screenshot shows the DEVNET interface for a Sandbox Lab. The main area displays a network diagram with three components: Cisco Modeling Labs Application, Devbox Application, and VLAN (VLAN 100/10). The interface includes a sidebar with 'Overview', 'Network Devices', and 'VPN Access' tabs. The Overview section contains the following text:

Overview:
Welcome to Cisco Modeling Labs (CML) Sandbox

Note: This is an optimized resource environment with a maximum reservation time of 4 hours.

Cisco Modeling Labs is a tool for building virtual network simulations (or labs) for you to test out new topologies, protocols, and config changes; automate network tests via CI/CD pipeline integration, and learn new things about the cool world of networking.

This sandbox provides access to a Cisco Modeling Labs system that can be used to explore the capabilities of the newest release of Cisco Modeling Labs Personal and Enterprise.

You'll find a CML server that includes an example lab topology loaded and running. This simulated network represents a common topology made up of NX-OS, IOS-XE, IOS-XR, and ASA devices. Also included are a few Linux hosts. The **inside-host01** node is an Ubuntu server host with a standard Linux command line interface, whereas **inside-host02** is an Alpine Linux desktop workstation. The **internet-host01** node acts like an IP host out in the internet.

The screenshot shows the DEVNET Sandboxes Catalog. The main area displays a list of networking labs with the following details:

Lab Name	Version	Status	Reservation Button
ADP Raspberry Pi	Always On	Always On	RESERVE
Cisco DNA Center	Version 1.3.1.4	Always On	ALWAYS ON
Cisco DNA Center	Version 1.3.1.6	Always On	ALWAYS ON
Cisco DNA Center	Version 1.3.1.4	Always On	RESERVE
Cisco Modeling Labs	Always On	Always On	RESERVE





ESPIADINHA

Lembre-se que foi apenas uma espiadinha!
Quinta-feira, 08 de Outubro, você terá a oportunidade de ver tudo isso e muito mais no evento, além de poder interagir fazendo perguntas ao vivo ao especialista no assunto.

Registre-se agora: http://bit.ly/CLMeb_1008