

# Cisco Tidal Scheduler Default Log Levels

Document ID: 112915

## Contents

### Introduction

#### Prerequisites

- Requirements

- Components Used

- Conventions

#### Minimum Recommended Log Settings

- How to Configure Logging

#### Related Information

## Introduction

By default, the debugging level for the Cisco Tidal Scheduler is set too low to capture any useful information. At the default levels all logging is set to severe and will only capture the failure. The failure is usually not enough information to diagnose the problem. This document provides the minimum recommended logging levels for Cisco Tidal Scheduler version 5.3.1.X.

## Prerequisites

### Requirements

Cisco Tidal Scheduler 5.3.1 or later

### Components Used

This document applies to Cisco Tidal Scheduler 5.3.1 or later.

### Conventions

Refer to Cisco Technical Tips Conventions for more information on document conventions.

## Minimum Recommended Log Settings

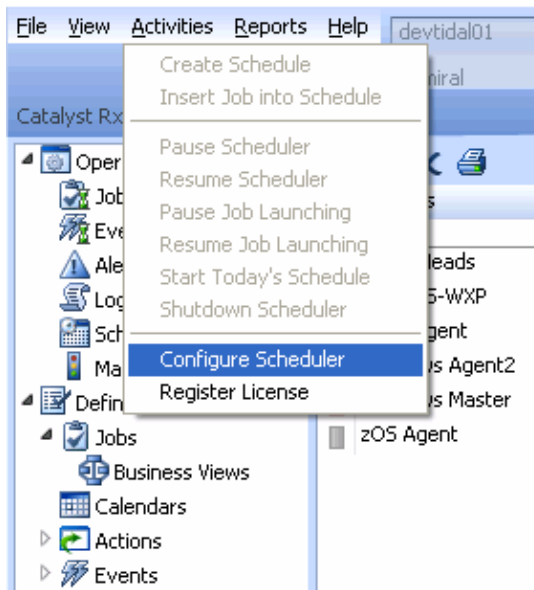
The Scheduler logging should be set to Info.

The Job Manager logging should be set to Info.

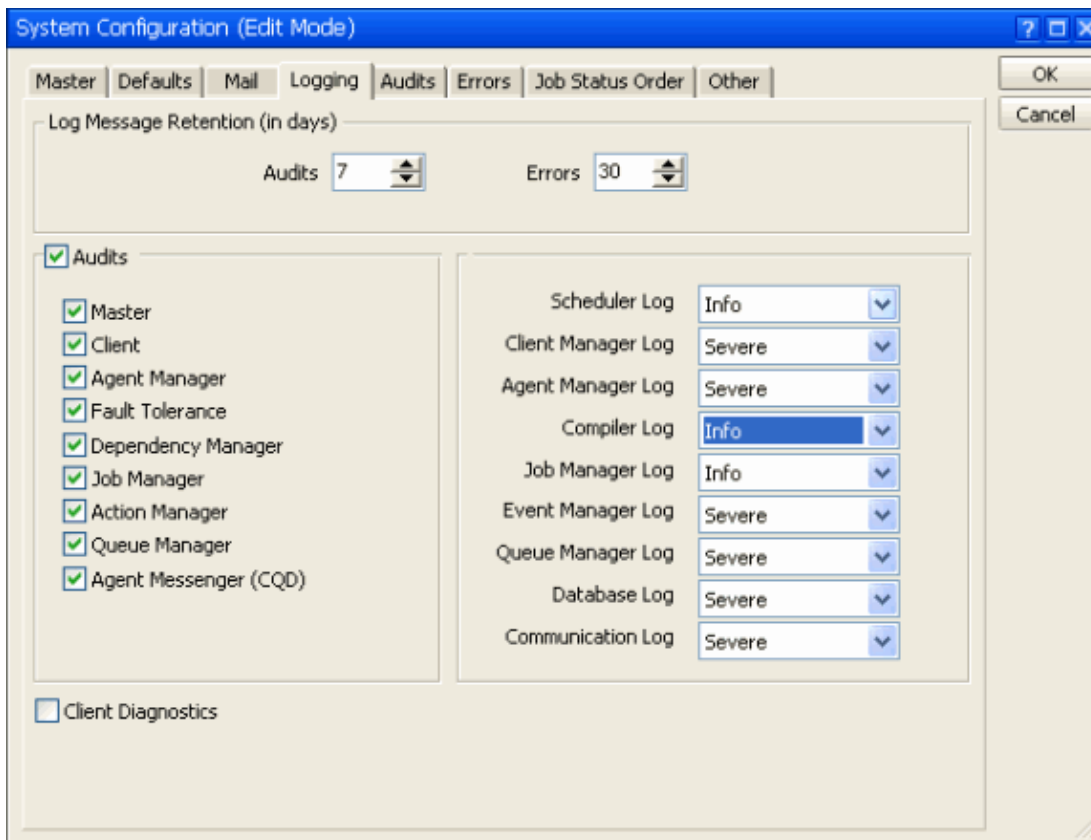
The Compiler logging should be set to Info.

### How to Configure Logging

Logging can be configured from the System Configuration dialog box. Go to **Activities > Configure Scheduler** in order to access this Dialog box.



Then, choose the **Logging** tab.



## Related Information

- [Technical Support & Documentation – Cisco Systems](#)

