



Secure. Mobile.

Powerfully Simple.



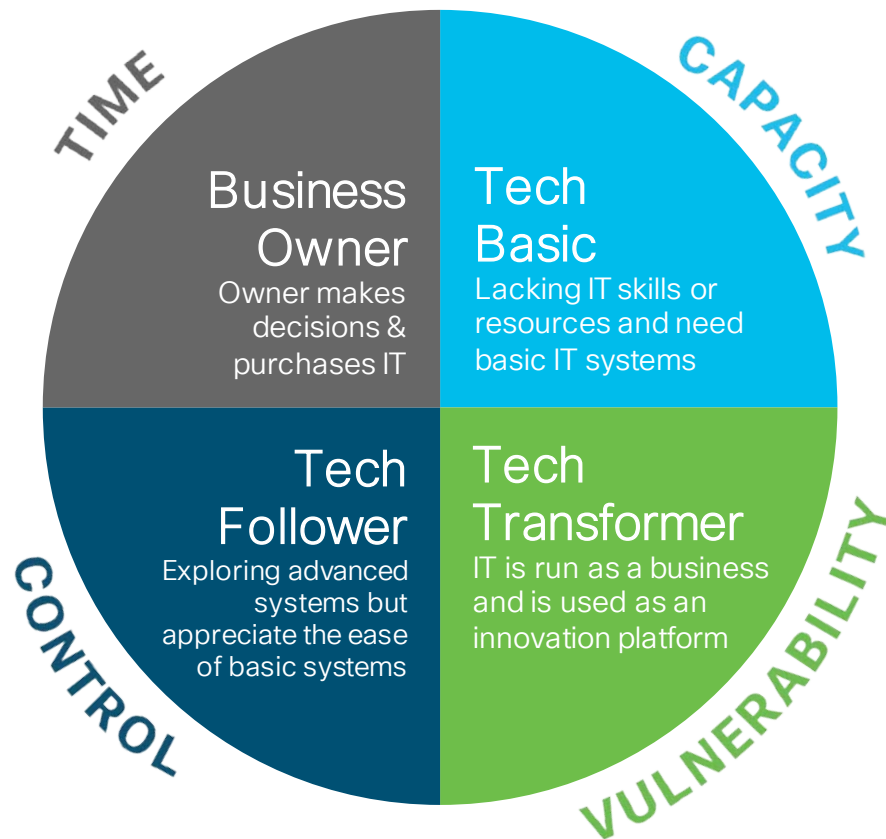
simple. 

Fuel My Business

AGENDA

1. Simple IT Portfolio Overview
2. Solution Overview – HyperFlex
3. Dashboard Walkthrough
4. Q&A
5. Conclusion

One Size Does Not Fit All



What's keeping you up at night?



Secure My Business

“My business had a **security breach**, we heard about the **latest attack**, and have a **new compliance regulation**. We need help ensuring our business is secure.”



Enable My Mobile Workforce

“My business is **growing**, we are **innovating**, and need to **ensure our teams can be productive, collaborative, and secure, anywhere**. We need great tech so we can **attract and retain the best talent**.”



Optimize My Business

“We have **new applications, new devices, and lots of video slowing down the network**, and last week we had an **outage that cost us a ton of money**. It's critical we stay up and running, **securely**.”



Connect My Teams

“We have lots of collaboration applications and devices, but they are **too complex** to bring everyone together in an **effortless manner**. I need a **simple solution** that allows my employees and customers to **connect in their own way**.”



Fuel My Business

Our current infrastructure is **too costly to maintain** and takes **too long to install my applications**. I need to **reduce application deployment time** and make it **easier to scale** my application needs with **sustained performance** for my customers and internal users.”

Simple, Secure, Reliable Networking

- ✓ *Designed Your Needs*
- ✓ *Fits Your **Budget***
- ✓ *Grows with Your Business*



Secure My Business

with Secure Branch

- Meraki MX
- ISR 1100
- Umbrella
- NGFW Low
- RV Series
- HyperFlex, UCS + Veeam

Secure against threats & protect your data



Enable My Mobile Workforce

with Secure Wireless

- Meraki MR
- Mobility Express
- Umbrella
- WAP
- WebEx

Increase employee productivity & flexibility



Optimize My Business

with Network Reliability

- Meraki Full Stack
- Cat2K, Mobility Express, ISR 1100
- Umbrella
- SBTG
- HyperFlex, UCS + Veeam
- WebEx

Ensure always-on with simple, smart solutions



Connect My Teams

with Intuitive Collaboration

- WebEx
- WebEx Teams

Connect teams with intuitive collaboration



Fuel My Business

with Converged Infrastructure

- HyperFlex
- UCS + Veeam

Security, simplicity and control of your computing, storage and connectivity



Today's
Webinar Theme:
**Fuel My
Business**
*with Hyperconverged
Infrastructure*

Be Ready: For any app, on any Cloud, at any scale

Continue Running: No business interruptions. No worries about your data.

Hyperconverge: Fully integrated computer, network and storage

Visualize: Manage virtual desktops with one all-encompassing dashboard

Solution Overview

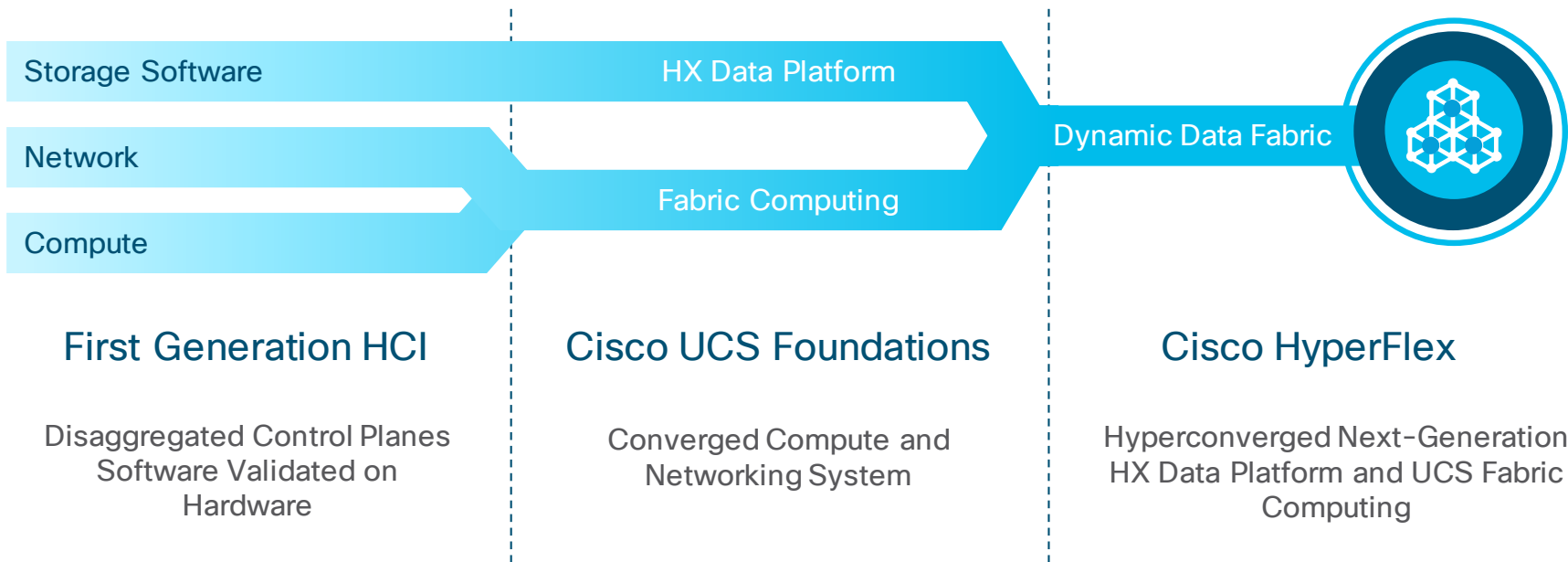
Cisco HyperFlex Systems

Our Speaker...



Patrick Moreau, VSS

SPECTRUM OF CONVERGENCE



HCI with Converged Fabric Networking

All Flash Cluster



HX220c

High Performance in Small Footprint
(Databases, VDI, VSI)



HX240c

High Density with Performance
(Database, VDI, VSI, Test/Dev)

+



**40 Gbps / 10 Gbps
UCS Fabric Networking**
90+ Nodes, Single Fabric,
Single Management Domain

Hybrid Cluster



HX220c

Smallest Footprint
(VDI, VSI, ROBO)



HX240c

Capacity-Heavy
(VDI, VSI, Test/Dev)

+



Network
Integrated
HCI

Policy
Based
Mgmt

End-to-end
HCI
Automation

Next Generation Data Platform Benefits

Independent Scaling and Scale Out Architecture

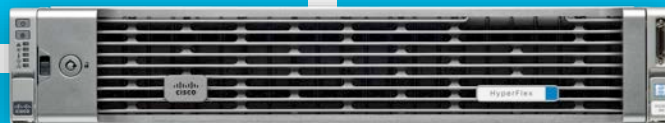
Predictable, Pay-as-You-Grow Efficiency

Enterprise Storage Features

Pointer-Based Snapshot

Near Instant Clones

Inline dedupe and compression



Highly Available/Self-Healing

Single Button Non-Disruptive Rolling Upgrades

Call Home and Onsite 24x7 Support Available

Enterprise Data Protection

Integrated into vCenter

Robust Reporting and Analytics

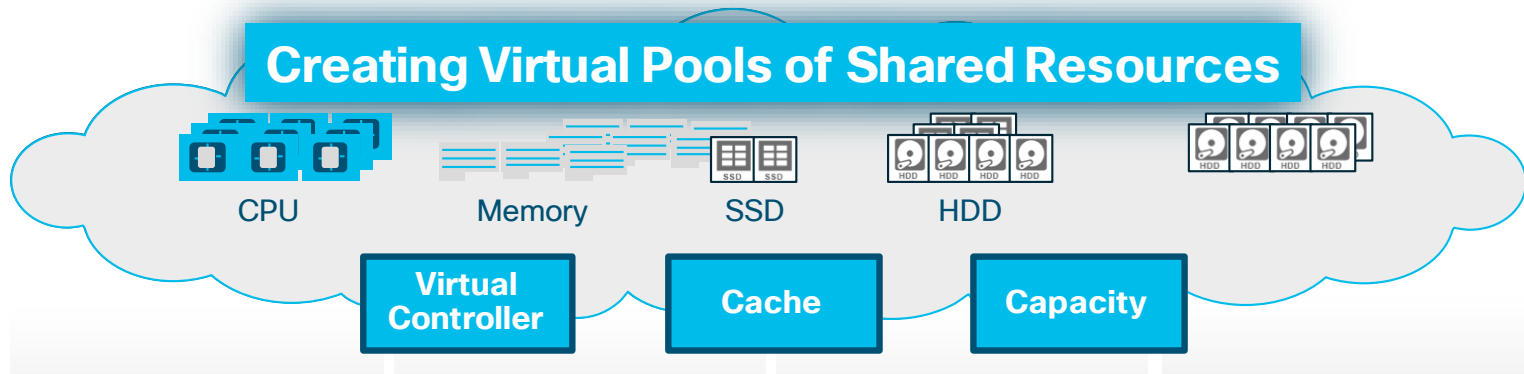
UCS Director Orchestration/Automation

Integrated Management

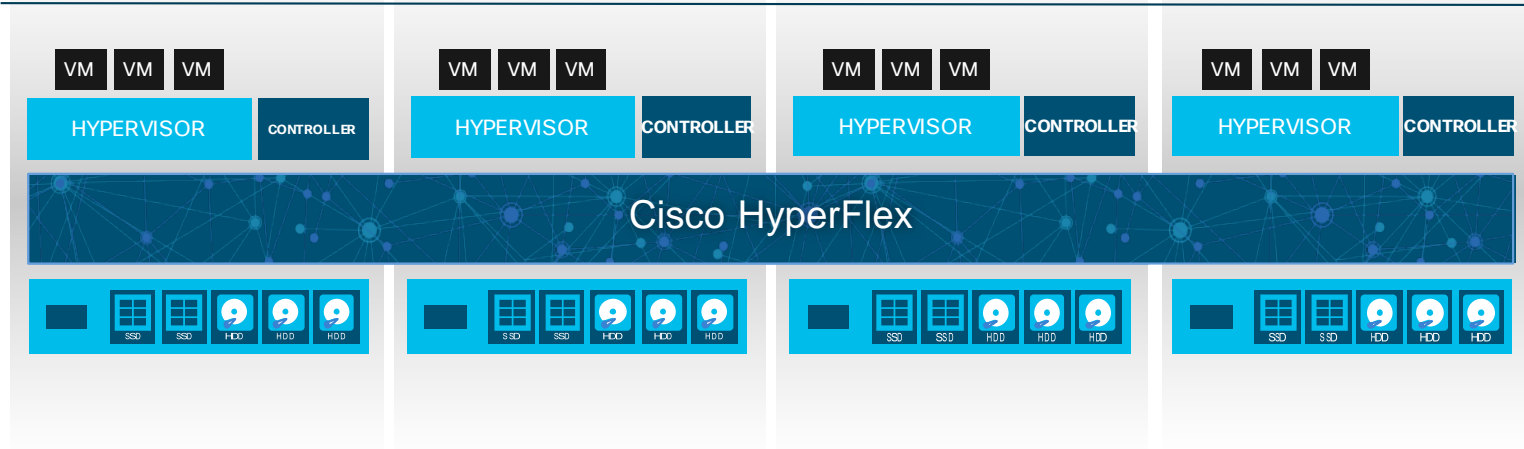
Simplified Scaling

Creating Virtual Pools of Shared Resources

Application View



Physical View





Flexible
Infrastructure

Portfolio Overview

Solution Overview

Walkthrough

Q&A

Conclusion

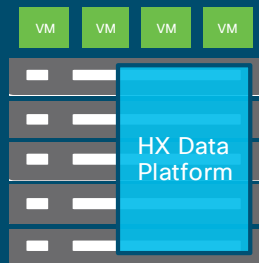
Industry's Only Adaptive Infrastructure

Unified UCSM Management for both
HyperFlex and Existing SAN

Compute Nodes can be Shared Across
HCI and CI Applications

UCS Director and Cloud Center for
Orchestration and Hybrid Cloud

Scale Storage
only
HDD/SSD



Scale HX Cluster
Nodes

Hyperconverged

Scale
CI
Racks



Scale
Compute-Only
Blades



Common Compute Nodes

Storage Arrays
SAN/NAS



Traditional Storage

Common Management Framework and Network Fabric







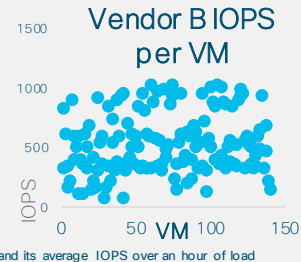
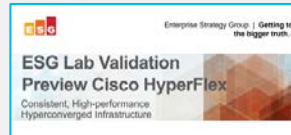
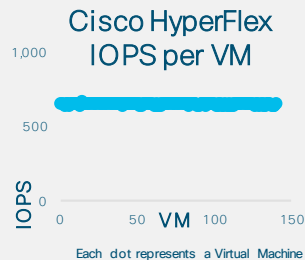


MULTICLOUD
PLATFORM



#1 PERFORMANCE

#1 in Performance and consistency



Each dot represents a Virtual Machine and its average IOPS over an hour of load

Log structured file system with dynamic data distribution

Purpose built for HCI

Highest performance and consistency for the most mission critical enterprise applications

Certification SAP® Standard Application Benchmarks

The SAP Sales and Distribution (SD) Standard Application Benchmark performed on November 22, 2017, by Cisco Systems in San Jose, CA, USA, was certified by SAP on behalf of the SAP Benchmark Council on December 11, 2017, with the following data:

Number of SAP SD benchmark users	11,348
Average daily response time	0.88 seconds
Throughput	1,261,670
Fully processed order line items per hour	3,790,000
SAP®	62,580
Average database request time (milliseconds)	0.078 sec / 0.027 sec
CPU utilization of central server	34%
Operating system, central server	Windows Server 2012 R2 Datacenter Edition on VMware vSphere 6.0 Update 7
SDMS	Microsoft SQL Server 2012 Enterprise Edition
SAP Business Suite software	SAP enhancement package 5 for SAP ERP 6.0

Configuration

No. of Servers	Usage	Hardware	Segmentation
1	Central Server	Cisco HyperFlex HXAP10C A440L2 processors / 28 cores / 56 threads, 100 GB Processor ES-2005 v4, 2.60 GHz, 64 GB L3 cache and 250 GB L2 cache per core, 32 GB L3 cache, 112 GB main memory	One VM per SD vCPU/virtual RAM running on one HyperFlex vSphere host. Hyperflex software contains 2.6 v6 host server master

Certification Number: 2077990

© 2017 by SAP AG. All rights reserved. SAP and the SAP logo are registered trademarks of SAP AG.

Cisco®/Hyperflex



1st Hyperconverged system to pass stringent [SAP SD Benchmark](#)

ESG HCI Performance Testing

Performance to Simplify Business Critical Apps



HYPERFLEX VS. HCI COMPETITION

- 1 **3x higher**
VM density
- 2 **3x reduced**
read/write latency
- 3 **7:1 reduction**
IOPS variability



3x better
TCO

More workloads
On Hyperconverged

Predictable
End User Experience

READ THE FULL ESG REPORT
cisco.com/go/hyperflex



Dashboard Walkthrough

 **HYPERFLEX****Any App.****Microsoft Hyper-V****Container FlexVolume Support****New Enterprise Application Validation****Any Cloud.****Application Performance Monitoring****Application Placement****Cloud Mobility****IaaS and Private Cloud****Any Scale.****64 Node & Capacity Scaling w/ HA****Stretch Clusters****Cloud-Deployed w/ Intersight**

HX Connect Dashboard



OPERATIONAL STATUS

Online ⓘ

SITE A

📶 Online

SITE B

📶 Online

WITNESS

👁️ Online



RESILIENCY STATUS

Healthy ⓘ



1 Site failure can be tolerated



CAPACITY

10TB

STORAGE
OPTIMIZATION

✓ 19% Compression

✓ 97% Deduplication



NODES

32

SITE A
168 HX220C-M45
Converged8 UCSB-B200-M4
ComputeSITE B
168 HX220C-M45
Converged8 UCSB-B200-M4
Compute

Cisco Container Platform Deployment through vCenter

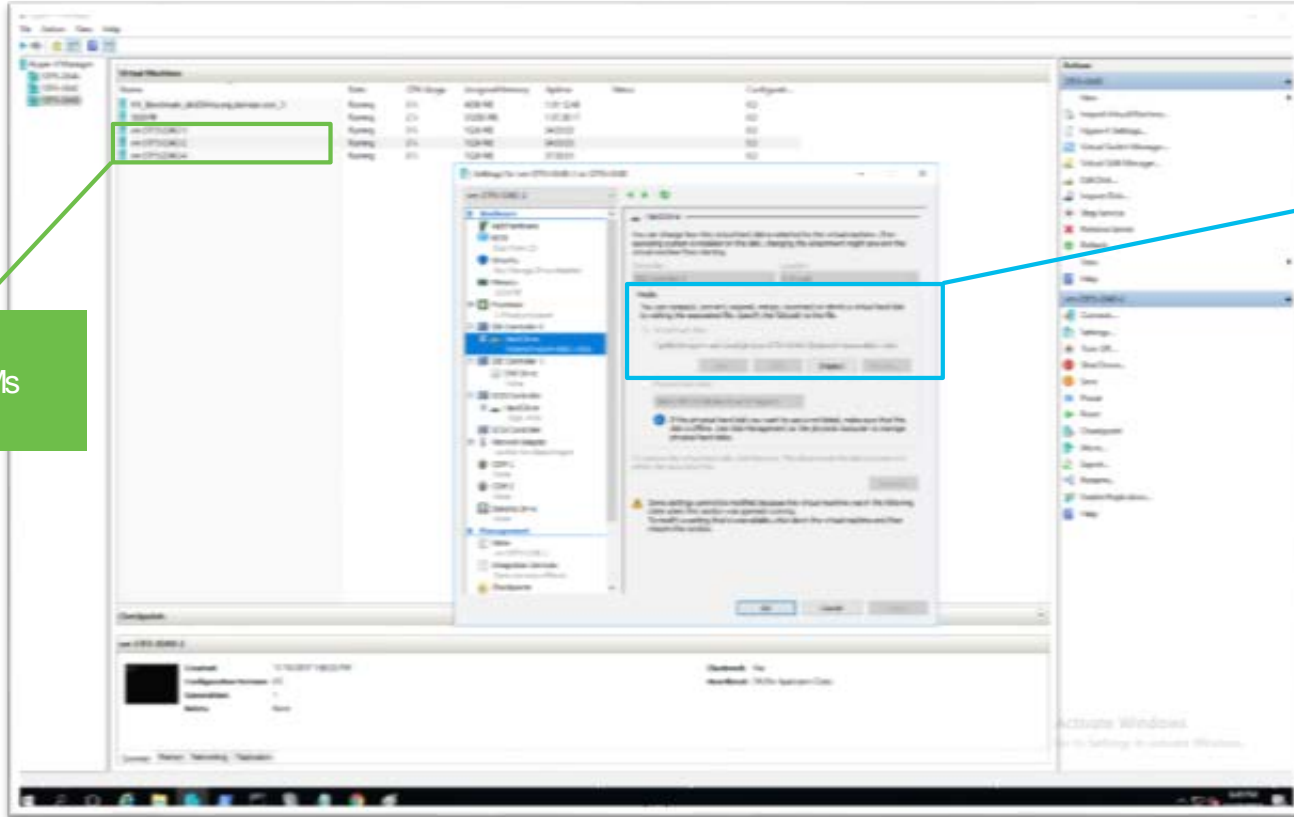
The screenshot displays the VMware vSphere Web Client interface. The main view shows a list of virtual machines (VMs) under the folder 'CCP070one'. The VMs are:

Name	State	Status	Provisioned Space
kcp-0-f0d23268-a6cf-40fa-bd97-a819f...	Powered On	Normal	40 GB
kcp-1-0a9c405e-d43e-477e-b3a3-3f34...	Powered On	Normal	40 GB
kcp-2-08f43de6-a77d-46df-a3e9-4d04...	Powered On	Normal	40 GB

The interface also shows a 'Recent Tasks' section with a task 'Move into resource pool' completed. The task details are:

Task Name	Target	Status	Initiator	Queued For	Start Time
Move into resource pool	Misc	Completed	VSPHERE LOCALI...	6 ms	1/17/1...

Hyper-V Manager



App VMs

SMB Fileshare

Want a **live, personal demo** of what you saw here today?

Click the link in the chat window!



Q&A

Before we go...

- ✓ Your *Needs*
- ✓ Your *Budget*
- ✓ Your *Business*

Simple, Secure, Reliable Networking



Secure My Business

Secure against threats & protect your data



Enable My Mobile Workforce

Increase employee productivity & flexibility



Optimize My Business

Ensure always-on with simple, smart solutions



Connect My Teams

Connect teams with intuitive collaboration



Fuel My Business

Security, simplicity and control of your computing, storage and connectivity

SECURITY, MOBILITY, COLLABORATION, NETWORKING, AND DATA CENTER SOLUTIONS

Check Out Our Solution Selector Tool

Simple guidance for choosing the perfect SMB network solutions for you!

You're running a business, and evaluating technology solutions and doing proof of concepts isn't your top priority. That's why we provide a simple tool to help you choose which products are best suited for your environment – switching, wireless, routing, and security – with just a few simple questions.

Try it now at

<http://bit.ly/ciscoselectortool>



Some other links to check out...

Find them in the chat window!

- [HyperFlex Home Page](#)
- [HyperFlex At-A-Glance](#)
- [HyperFlex Video](#)
- [ESG Lab Validation Case Study](#)

Click [here](#) to view all Data Center resources for partners

We Appreciate Your Feedback!

Please take a moment to let us know if this session met your needs and expectations.

The confidential evaluation survey will open once the event window is closed.

