

# How to Setup PTZ Tours on a Sony RX550 PTZ Network Camera

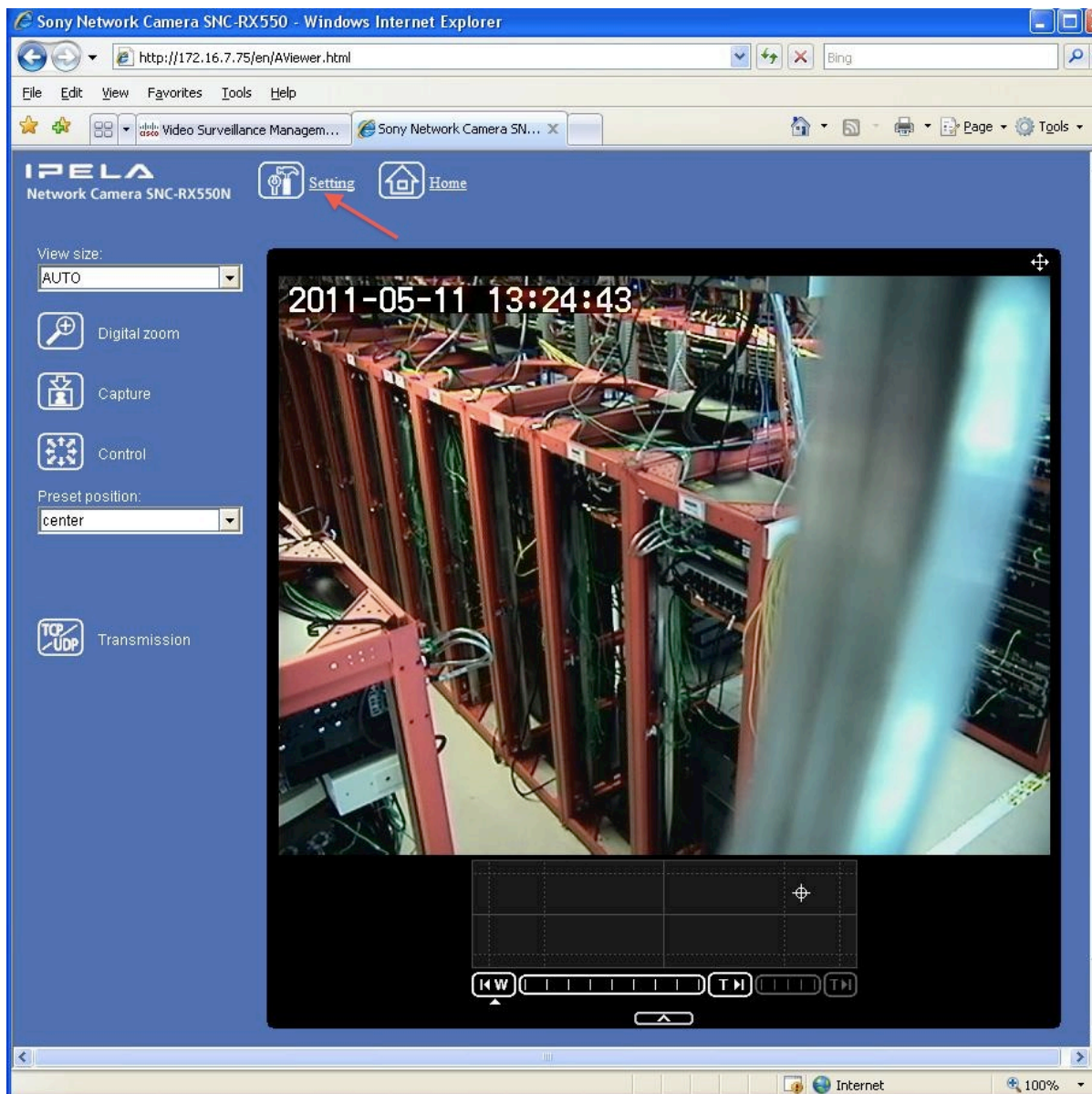
## High Level:

1. Setup PTZ Presets on the Camera
2. Use these to create the tour

## Procedure:

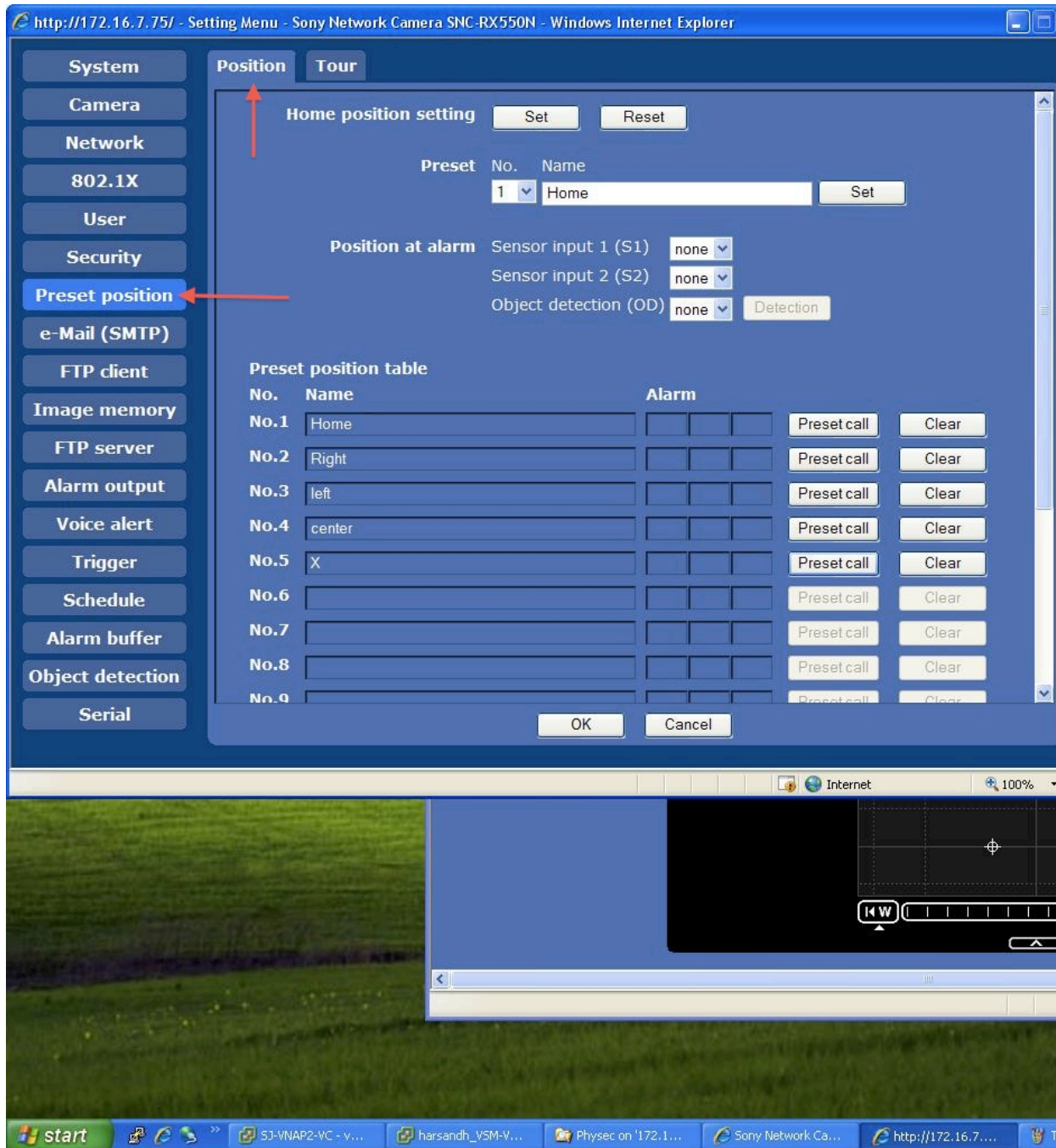
Go to Web Interface of the Sony Camera.

Click on Setting



Next Click on the **Preset Position** Tab at the left, then on the **Position** Tab on top.

Use this screen and the main screen to create the presets for the positions you need the tours to stop at.

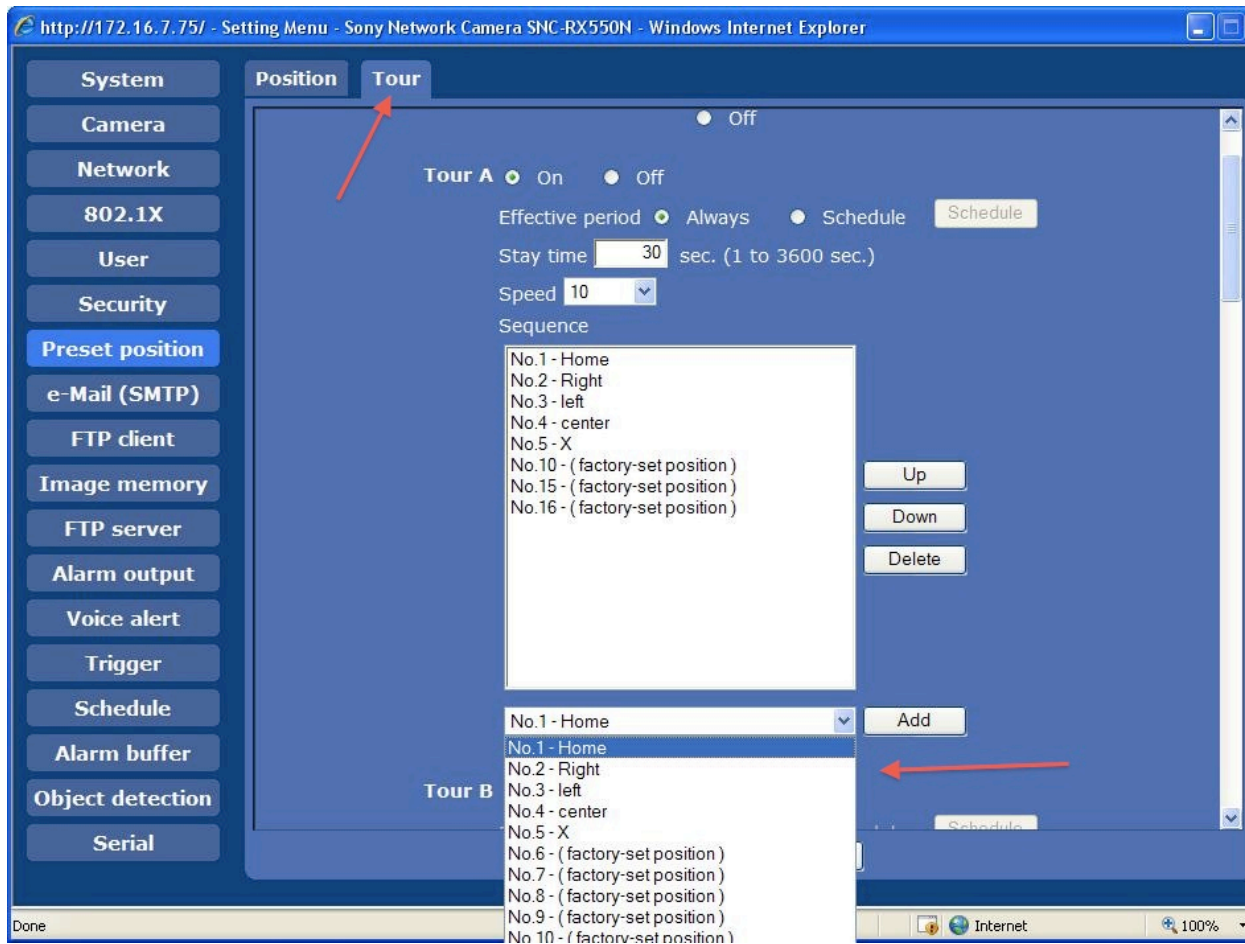


Then, Go to the **Tour** Tab.

Click the Tours ON button.

Select Tour A to be ON.

In the Sequence window, put in the selected Presets in order that you want the camera to visit them



You can create more than 1 tour, and you can run them in a schedule if you wish.