

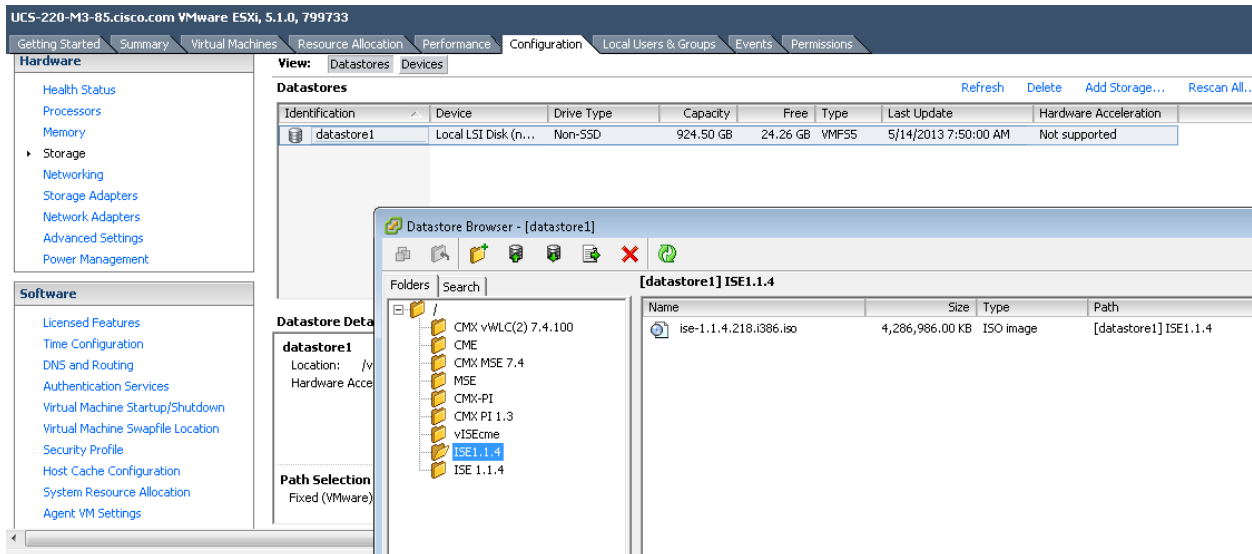
Cisco ISE 1.1.4 Installation on ESXi 5.1:

Release Date: 25-APR-2013

Version : 1.1.4

Cisco Download Link for ISE 1.1.4 IOS : https://global.esd.cisco.com/files/swc/std/4_SDSP_728000_1366922243409/1/ise-1.1.4.218.i386.iso?ip=72.163.9.198&dtrTag=4_SDSP_728000_1366922243409_d9103835d626282fe4ae0e3212ecce6c&userid=manbaez&tenant-id=sdsp&gda_ =1368642355_f199bea99bf609ae5a7e89023f1fca14cd8969dad01d870cdb4b94643cd9ad5c

Browse ios image and upload to esxi storage then navigate to create new virtual machine choose custome and fill up machine details and allocate hardware resources accordingly.



19.19.19.85

- CMX MSE 7.4
- CMX PI 1.3
- CMX vWLC 7.4.100
- ISE 1.1.4
- vISEcme

UCS-220-M3-85.cis

Getting Started

Name
CMX PI 1.3
CMX MSE 7.4
CMX vWLC 7.4
vISEcme
ISE 1.1.4

Configuration

- Name and Location
- Storage
- Virtual Machine Version
- Guest Operating System
- CPUs
- Memory
- Network
- SCSI Controller
- Select a Disk
- Ready to Complete

Configuration

- Typical**
Create a new virtual machine with the most common devices and configuration options.
- Custom**
Create a virtual machine with additional devices or specific configuration options.

Recent Tasks

Name	Target	Status
------	--------	--------

Help < Back Next > Cancel

ISE 1.1.4 - Virtual Machine Properties

Hardware | Options | Resources | Virtual Machine Version: 8

Show All Devices Add... Remove

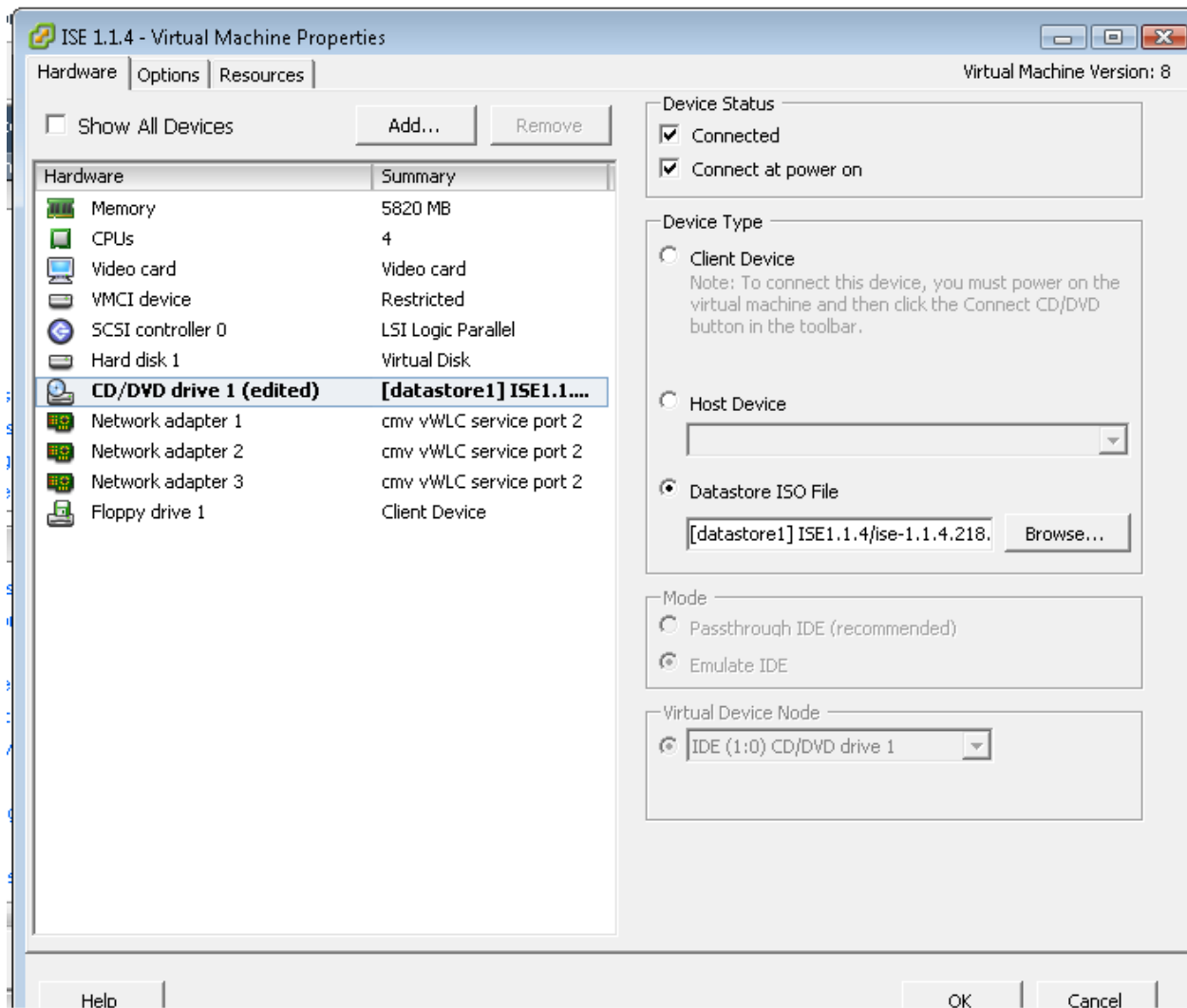
Hardware	Summary
Memory	5820 MB
CPUs	4
Video card	Video card
VMCI device	Restricted
SCSI controller 0	LSI Logic Parallel
Hard disk 1	Virtual Disk
CD/DVD drive 1	[datastore1] ISE1.1.4/i...
Network adapter 1	cmv vWLC service port 2
Network adapter 2	cmv vWLC service port 2
Network adapter 3	cmv vWLC service port 2
Floppy drive 1	Client Device

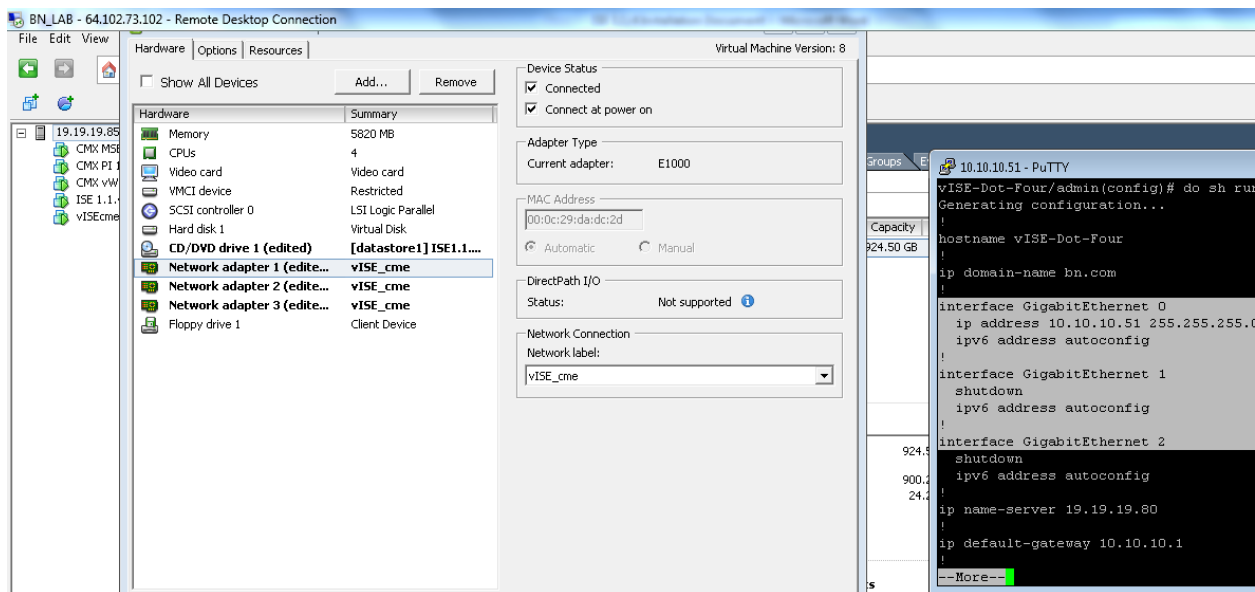
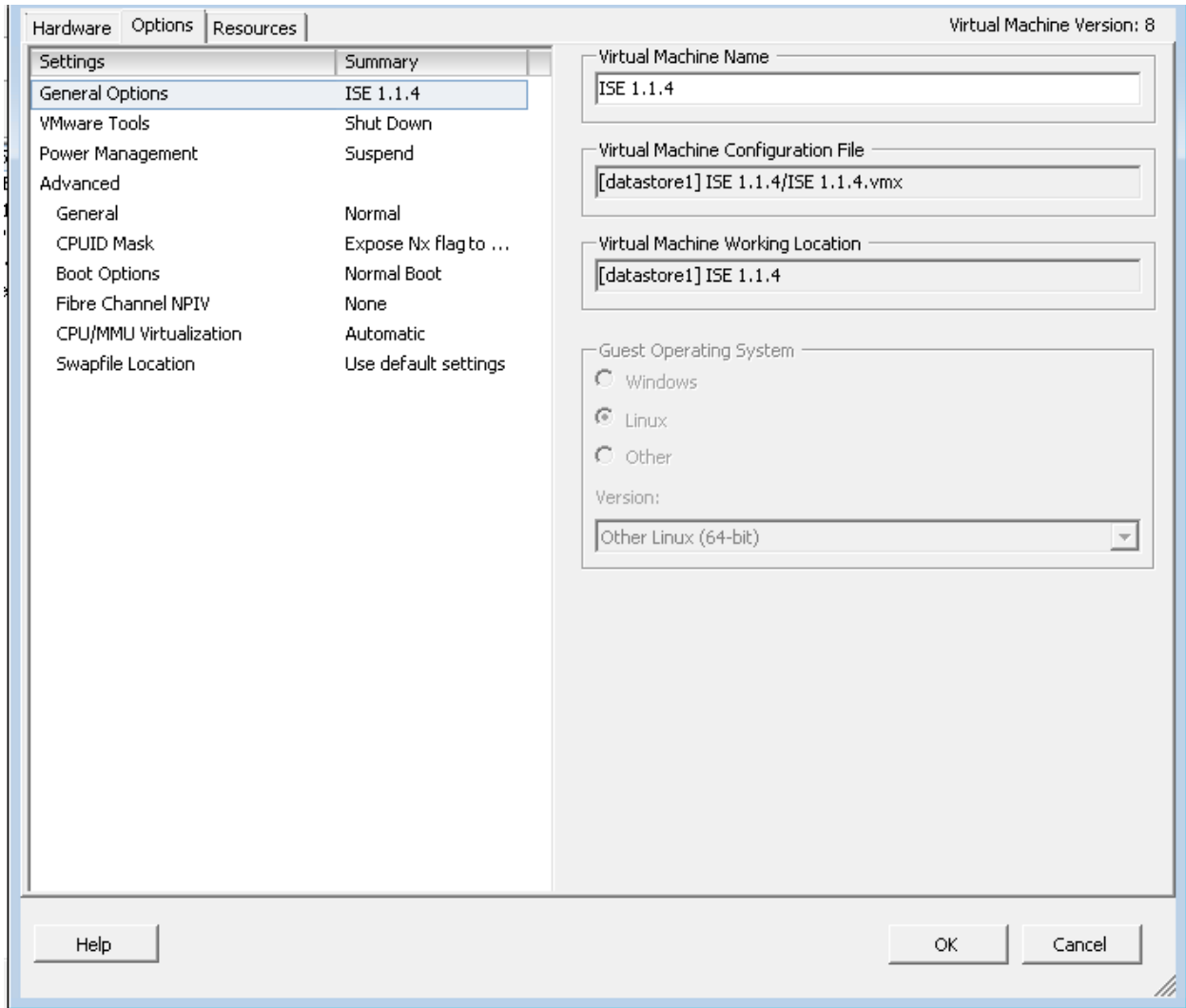
Memory Configuration

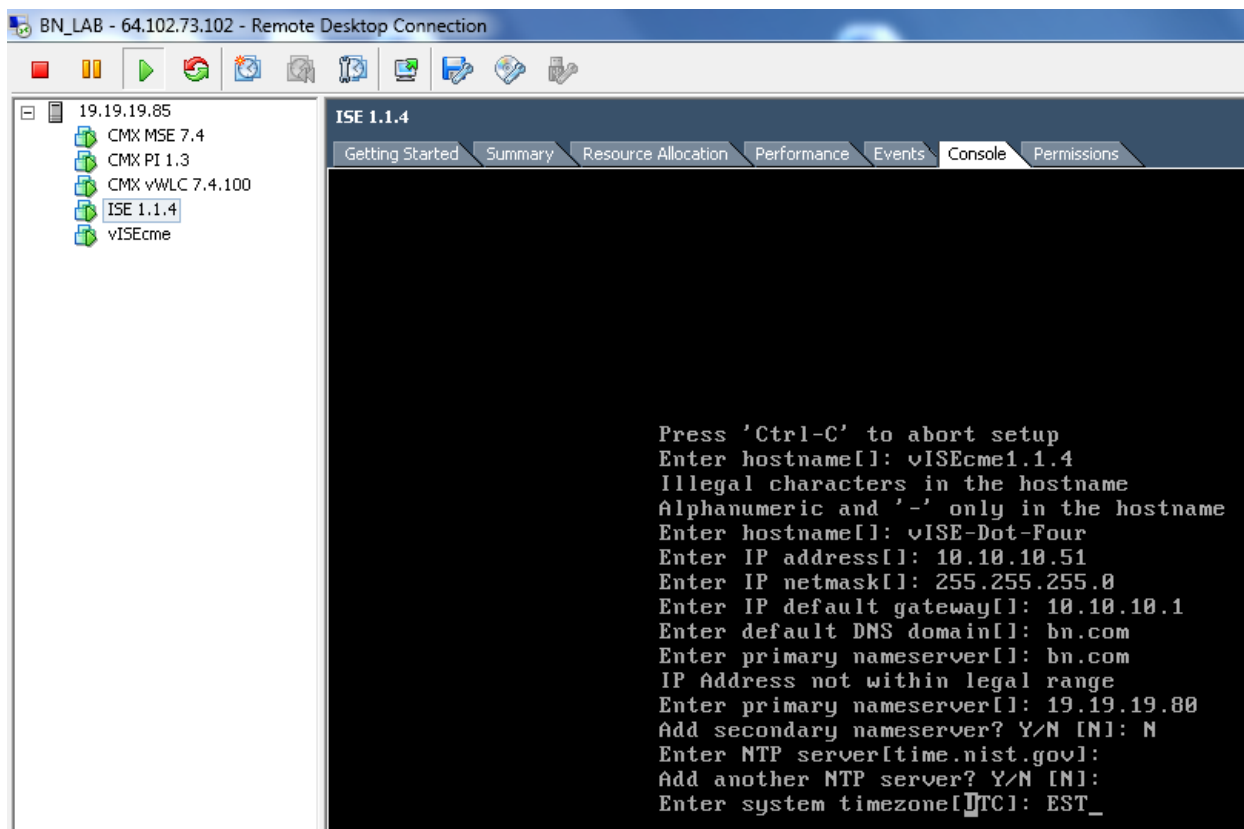
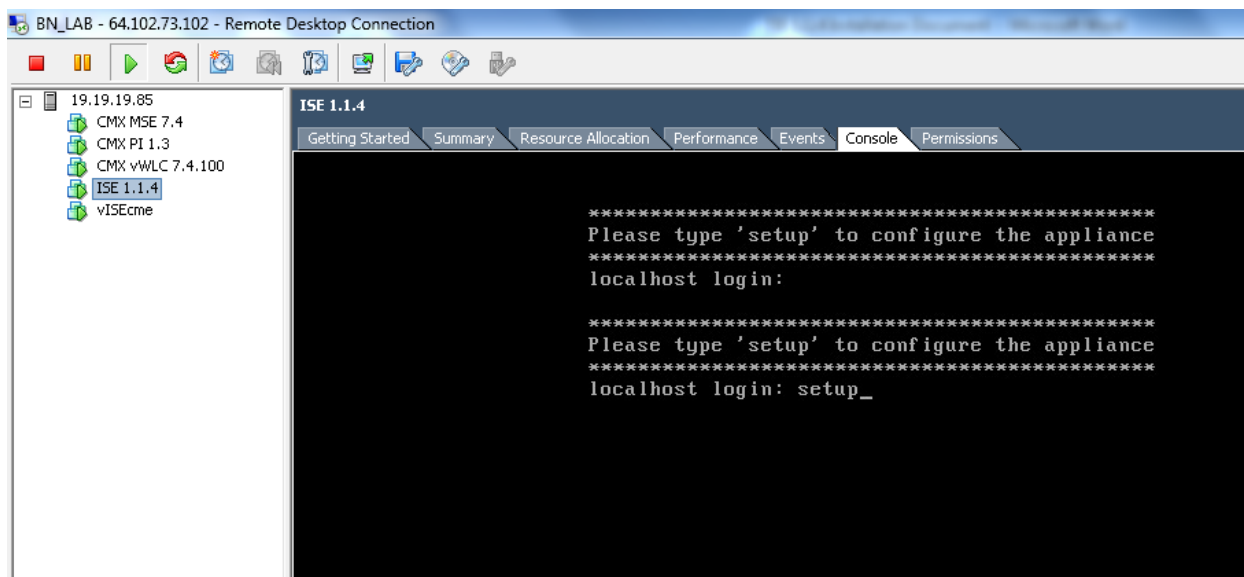
Memory Size:

- Maximum recommended for this guest OS: 1011 GB.
- Maximum recommended for best performance: 32708 MB.
- Default recommended for this guest OS: 384 MB.
- Minimum recommended for this guest OS: 32 MB.

Help | OK | Cancel







```

Press 'Ctrl-C' to abort setup
Enter hostname[]: vISEcme1.1.4
Illegal characters in the hostname
Alphanumeric and '-' only in the hostname
Enter hostname[]: vISE-Dot-Four
Enter IP address[]: 10.10.10.51
Enter IP netmask[]: 255.255.255.0
Enter IP default gateway[]: 10.10.10.1
Enter default DNS domain[]: bn.com
Enter primary nameserver[]: bn.com
IP Address not within legal range
Enter primary nameserver[]: 19.19.19.80
Add secondary nameserver? Y/N [N]: N
Enter NTP server[time.nist.gov]:
Add another NTP server? Y/N [N]:
Enter system timezone[UTC]: EST
Enter username[admin]:
Enter password:
Enter password again:
Passwords do not match
Enter password:
Enter password again:
Bringing up network interface...
Pinging the gateway...

```

```

IP Address not within legal range
Enter primary nameserver[]: 19.19.19.80
Add secondary nameserver? Y/N [N]: N
Enter NTP server[time.nist.gov]:
Add another NTP server? Y/N [N]:
Enter system timezone[UTC]: EST
Enter username[admin]:
Enter password:
Enter password again:
Passwords do not match
Enter password:
Enter password again:
Bringing up network interface...
Pinging the gateway...
Pinging the primary nameserver...
Virtual machine detected, configuring VMware tools...
Sync with NTP server failed. Incorrect time could render the system unusable until it is re-installed. Retry? Y/N [Y]: N

Do not use 'Ctrl-C' from this point on...

Installing applications...
Installing ISE ...

```

```
Application bundle (ISE) installed successfully

=== Initial Setup for Application: ISE ===

Welcome to the ISE initial setup. The purpose of this setup is to
provision the internal ISE database. This setup requires you create
a database administrator password and also create a database user password.

Please follow the prompts below to create the database administrator password.

Enter new database admin password:
% Password should start with an alphabet.
% Password does not meet minimum length requirement of 11 characters.
% Password must contain at least one digit.
% Password must contain at least one lower case letter.
% Password must contain at least upper case letter.
Enter new database admin password:
% Password does not meet minimum length requirement of 11 characters.
Enter new database admin password:
Confirm new database admin password:
Successfully created database administrator password.

Please follow the prompts below to create the database user password.

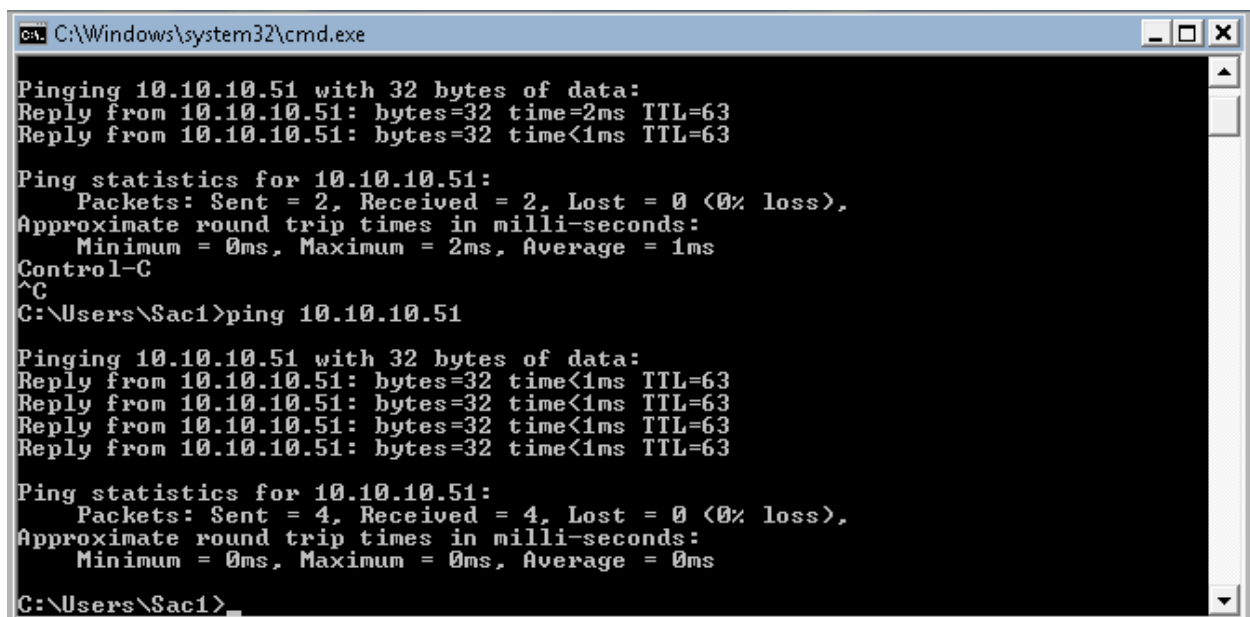
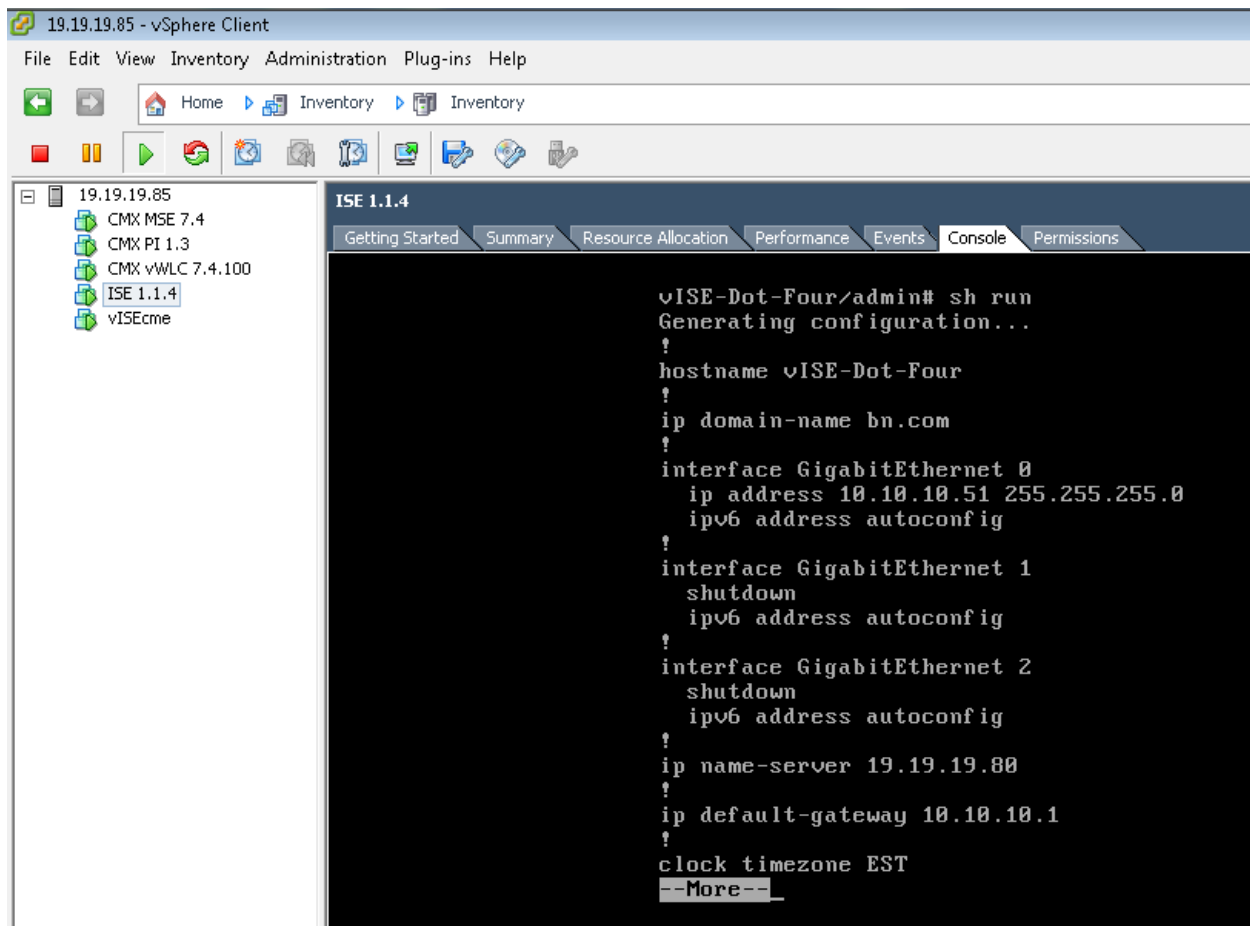
Enter new database user password: _
```

```
% Password should start with an alphabet.
% Password does not meet minimum length requirement of 11 characters.
% Password must contain at least one digit.
% Password must contain at least one lower case letter.
% Password must contain at least upper case letter.
Enter new database admin password:
% Password does not meet minimum length requirement of 11 characters.
Enter new database admin password:
Confirm new database admin password:
Successfully created database administrator password.

Please follow the prompts below to create the database user password.

Enter new database user password:
% Password does not meet minimum length requirement of 11 characters.
Enter new database user password:
% Password contains illegal characters. Legal characters are [A-Z][a-z][0-9]_#
% Password does not meet minimum length requirement of 11 characters.
Enter new database user password:
Confirm new database user password:
Successfully created database user password.
Running database cloning script...
Running database network config assistant tool...
Extracting ISE database content...

-
```

BN_LAB - 64.102.73.102 - Remote Desktop Connection

ISE - Monitor - 10.10.10.51 - Mozilla Firefox

File Edit View History Bookmarks Tools Help

ISE - Monitor - 19.19.19.4 WLC2500 Untrusted Connection ISE - Monitor - 10.10.10.51

https://10.10.10.51/admin/#pageId=com_cisco_xmp_web_page_tmpdash

Most Visited Getting Started Latest Headlines

CISCO Identity Services Engine vISE-Dot-Four admin Logout Feedback

Home Operations Policy Administration Task Navigator

Metrics

Active Endpoints: 0

24h

System Summary

	Name	Utilization and Late	
		CPU	Memory
<input checked="" type="checkbox"/>	vISE-Dot-Four		

Authentication Failure

Total: 0

Last 24 Hours

Distribution By:

Identity Services Engine

Version: 1.1.4.218

Product Identifier (PID) ISE-VM-K9
Version Identifier (VID) V01
Serial Number (SN) 9GH5BMNENPG
ADE-OS Version 2.0.4.120
[Provide Feedback](#)

© 2012 Cisco Systems, Inc. Cisco, Cisco Systems and Cisco Systems logo are registered trademarks of Cisco Systems, Inc. and/or its affiliates in the U.S. and certain other countries.

CISCO

Metrics

Profiled Endpoints: 0

24h

Last 24 Hours Last 60 Minutes

No Data Available

No Data Available

Last 24 Hours Last 60 Minutes