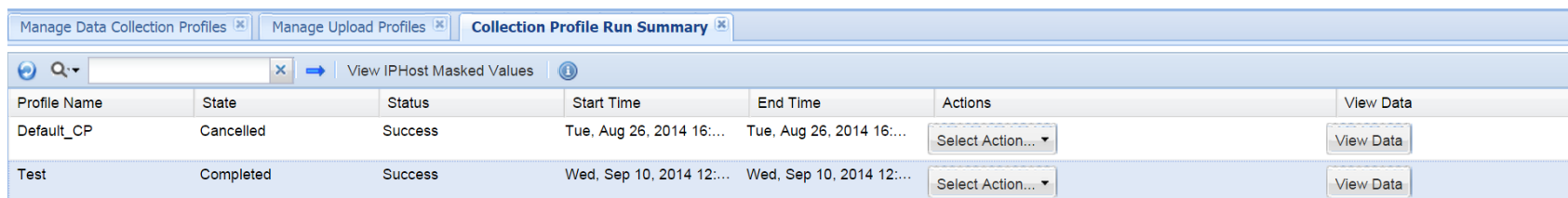


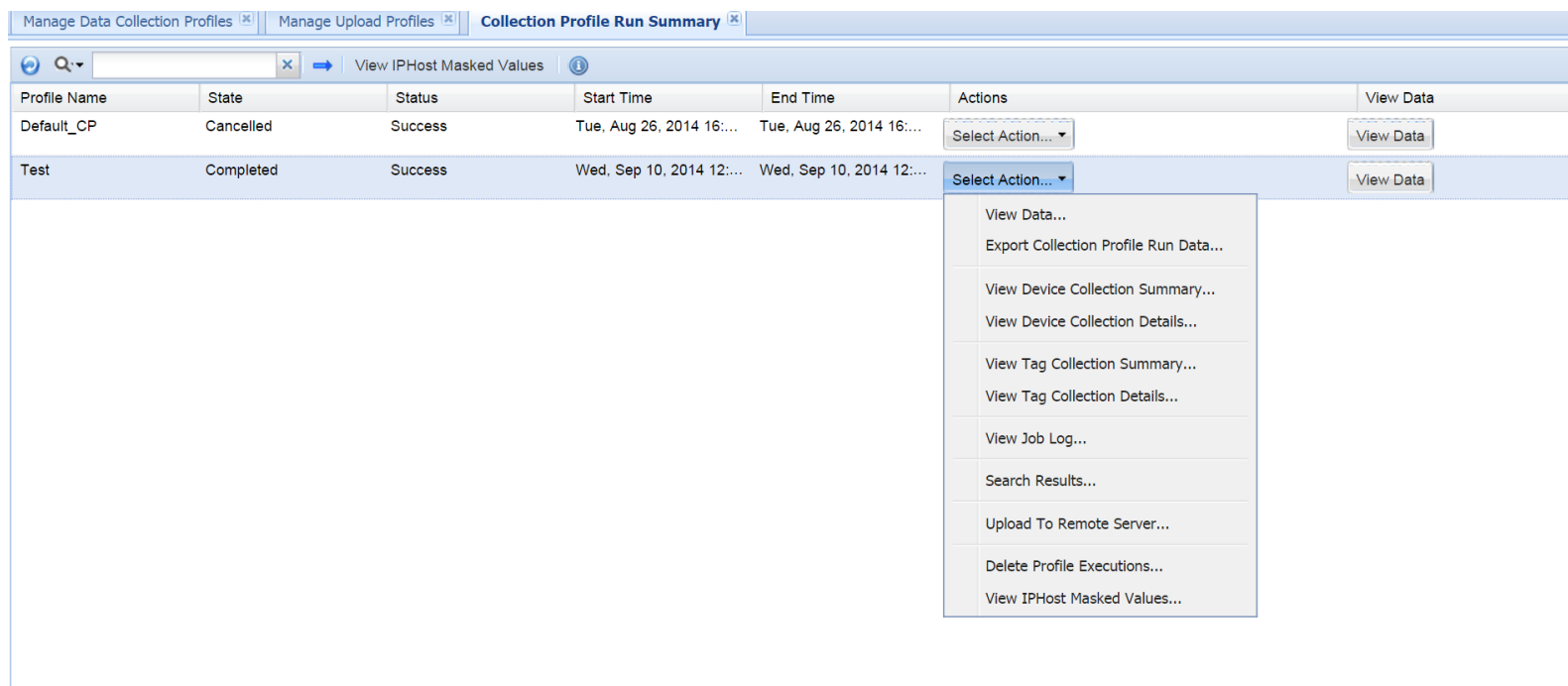
How to download the transport files from the collector for manual import into SNTC.

1. Click on “Reports->Collection Profile Run summary”, choose the required run for which you need the transport files.



Profile Name	State	Status	Start Time	End Time	Actions	View Data
Default_CP	Cancelled	Success	Tue, Aug 26, 2014 16:...	Tue, Aug 26, 2014 16:...	Select Action...	View Data
Test	Completed	Success	Wed, Sep 10, 2014 12:...	Wed, Sep 10, 2014 12:...	Select Action...	View Data

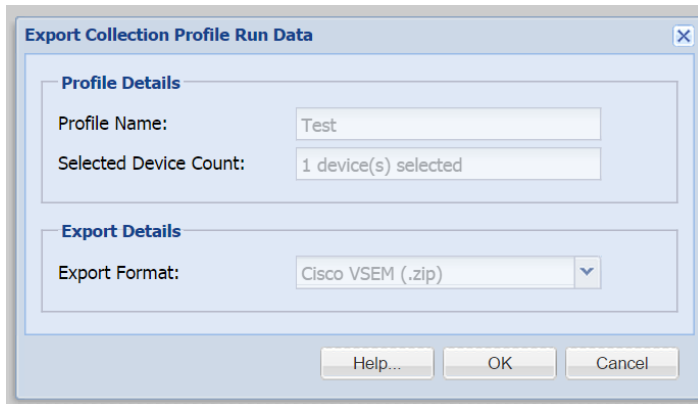
2. Click on “Select Action” button and then click on “Export Collection Profile Run Data”.



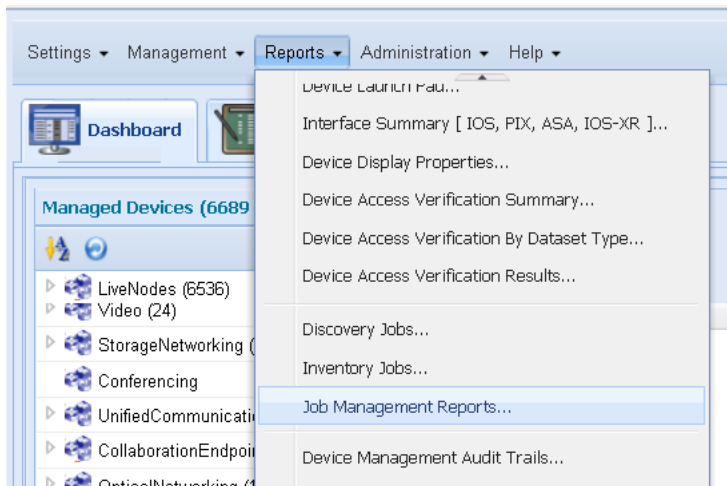
Profile Name	State	Status	Start Time	End Time	Actions	View Data
Default_CP	Cancelled	Success	Tue, Aug 26, 2014 16:...	Tue, Aug 26, 2014 16:...	Select Action...	View Data
Test	Completed	Success	Wed, Sep 10, 2014 12:...	Wed, Sep 10, 2014 12:...	Select Action...	View Data

- View Data...
- Export Collection Profile Run Data...
- View Device Collection Summary...
- View Device Collection Details...
- View Tag Collection Summary...
- View Tag Collection Details...
- View Job Log...
- Search Results...
- Upload To Remote Server...
- Delete Profile Executions...
- View IPhost Masked Values...

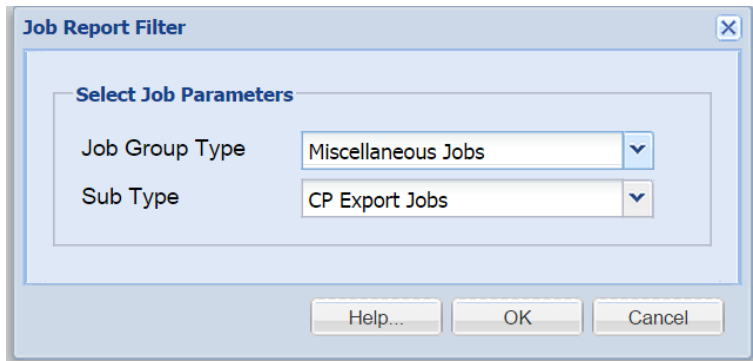
3. Click on “OK” in the following screen



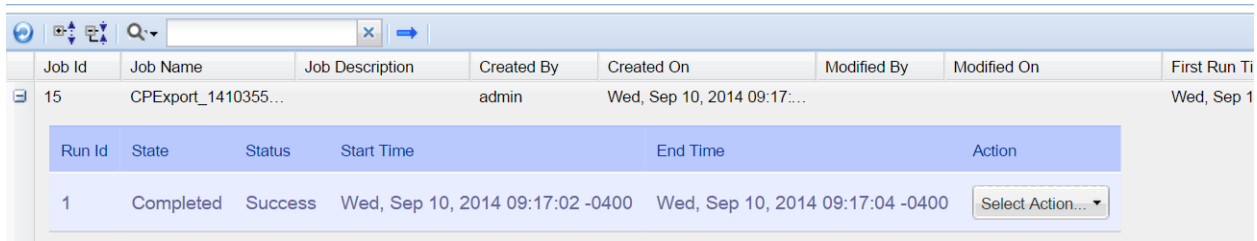
4. Click on “Reports->Job Management Reports”



5. Click on the “Miscellaneous Jobs” from the Job Report Filter.



6. Click on the required job.



7. Click on “Select Action” and click on “Download File”.

