



# Cisco CSPC 2.8

Quick Start Guide

September 2018



# Contents

## Table of Contents

- INTRODUCTION TO CSPC ..... 3**
  - PREREQUISITES .....3
  - CSPC SUPPORTED BROWSERS ..... 3
- VIRTUAL PLATFORM REQUIREMENTS ..... 4**
- DOWNLOAD THE VIRTUAL MACHINE IMAGE..... 4**
- CONFIGURE APPLIANCE IP ADDRESS..... 4**
  - CONFIGURE IPV4 ADDRESS.....5
  - CONFIGURE IPV6 ADDRESS .....6
- SETUP THE SOFTWARE APPLIANCE FOR THE FIRST TIME ..... 7**
- CONFIGURE CSPC USING THE WIZARD ..... 8**
  - INSTALL.....8
  - REGISTER .....10
  - ADD DEVICES.....11
  - ACCESS CREDENTIALS .....12
  - COLLECT .....13
- PORT USAGE INFORMATION .....14**
- ACCESS CSPC USER INTERFACE .....15**
  - UPDATE DEVICES, CREDENTIALS AND COLLECTION SETTINGS .....16
  - VIEW STATUS OF DISCOVERY, COLLECTION AND UPLOADS.....16
- LEGAL INFORMATION.....18**

## Introduction to CSPC

The Cisco Common Service Platform Collector (CSPC) is an SNMP-based tool that discovers and collects information from the Cisco devices installed on your network. The CSPP software provides an extensive collection mechanism to gather various aspects of customer device data. Information gathered by the collector is used by several Cisco Service offers, such as Smart Net Total Care, Partner Support Service, and Business Critical Services. The data is used to provide inventory reports, product alerts, configuration best practices, technical service coverage, lifecycle information, and many other detailed reports and analytics for both the hardware and operating system (OS) software.

This document provides information about how to download, install and configure a new CSPP collector on a virtual machine that is running ESXi 5.x or higher.

If you are using the ISO image for the CSPP, please refer to the [CSPP ISO Image Installation Guide](#) for instructions.

If you are updating an existing CSPP, please refer to the [CSPP Upgrade Guide](#).

In order to configure a CSPP and ensure a successful setup, a workflow wizard which simplifies the CSPP configuration is included with the CSPP 2.8 and later releases. You should know the SNMP credentials that are set up on your devices.

This document will walk you through the steps for a basic first time CSPP setup.

## Prerequisites

Register to the required services:

- [How to register SNTC Service](#)
- To register for PSS portal access, please [click](#) to open a new mail, copy the below and provide the requested details.

Please open a case to assign a Super Admin for my Company. (please submit the information below.)

Partner Company Name:

Partner Location:

Super Admin Name:

Super Admin Cisco.com ID:

Super Admin Email:

Technical Contact Phone Number:

Technical Contact Cisco.com ID:

Technical Contact Email:

Technical Contact Phone Number:

Existing PSS contract number:

## CSPP Supported Browsers

- Firefox version 27 to 59
- Internet Explorer (IE) version 9 to 11

- Chrome 58

**Note:** Allocate 2-4 hours for the installation, depending on your network size. The algorithm runs only once to optimize storage and reduces the time required in future upgrades. The system will automatically reboot after installing the patch.

## Virtual Platform Requirements

This section provides information about the virtual platform requirements. This guide does not provide directions on how to install the different virtual platforms.

As of CSPC 2.8 release, there is a single configurable OVA image that supports multiple configurations. Below are listed the minimum system requirements for the collector images that run on a ESXi 5.x or higher virtual platform:

	Ultra Small (up to 5,000 devices)	Small (up to 10,000 devices)	Medium (10,000 to 20,000 devices)	Large (20,000 to 40,000 devices)
vCore count	2	4	8	12
RAM	2 GB	4 GB	8 GB	16 GB
HDD (GB)	40	250	500	1000

A minimum of one virtual NIC is needed for all configurations. The number of NICs required is dependent upon the network topology.

## Download the Virtual Machine Image

After ensuring that your virtual environment can provide the needed resources, the next step is to download the CSPC collector image. The most recent software image can be obtained from the download center.

To access the CSPC collector image, perform the following steps:

- Go to the following URL:  
[CSPC Image Download Center](#)
- Login with your CCO Credential if requested.
- Select the required image and click **Download**. Accept the Terms and Conditions to start the image download.
- Deploy this image to your environment.

## Configure Appliance IP Address

After the OVA has been installed, you are prompted to enter an IP Address for the collector. Choose one of the three options:

```
Please select from the below options:
```

1. IPv4 Configuration
2. IPv6 Configuration
3. Go to Command Line (Shell)

```
Enter your choice :
```

## Configure IPv4 address

1. Select 1 to configure IPv4 address
2. Select any one option:
  - a. Select 1 to fetch IP address automatically.

```
Intializing Please wait...
```

```
Please select from the below options:
```

1. Get IPv4 Address automatically (Use DHCP)
2. Enter IPv4 Address manually (Static IP Address)
3. Main Menu

```
Enter your choice : 1
```

```
Configuring your CSPC appliance...
```

```
Success!
```

```
Press [Enter] key to exit.
```

- b. Select 2 to enter a static IP Address for your appliance. Enter the Net Mask and Default Gateway.

```
Intializing Please wait...
Please select from the below options:

1. Get IPv4 Address automatically (Use DHCP)
2. Enter IPv4 Address manually (Static IP Address)
3. Main Menu

Enter your choice : 2

Enter IP Address : 10.127.102.190
Enter Net Mask : 255.255.255.0
Enter Default Gateway : 10.127.102.1_
```

3. Select 3 to go back to main menu.

## Configure IPv6 Address

1. Select 2 to configure IPv6 address
2. Select any one option:
  - a. Select 1 to fetch IP address automatically.

```
Please select from the below options:

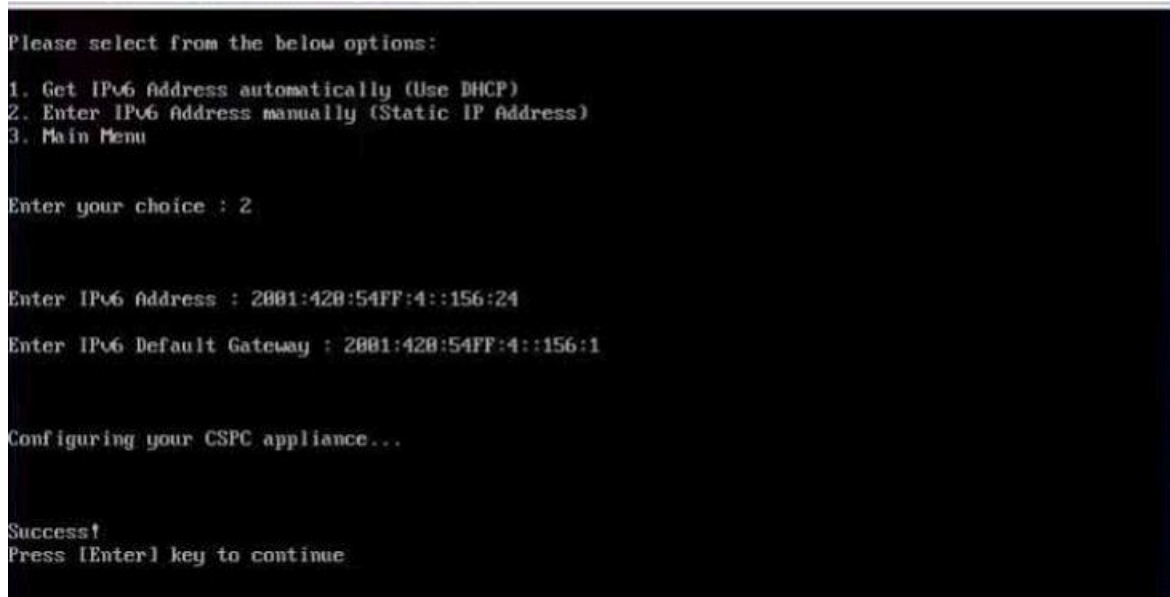
1. Get IPv6 Address automatically (Use DHCP)
2. Enter IPv6 Address manually (Static IP Address)
3. Main Menu

Enter your choice : 1

Configuring your CSPC appliance...

Success!
Press [Enter] key to continue_
```

- b. Select 2 to enter the IP Address manually.

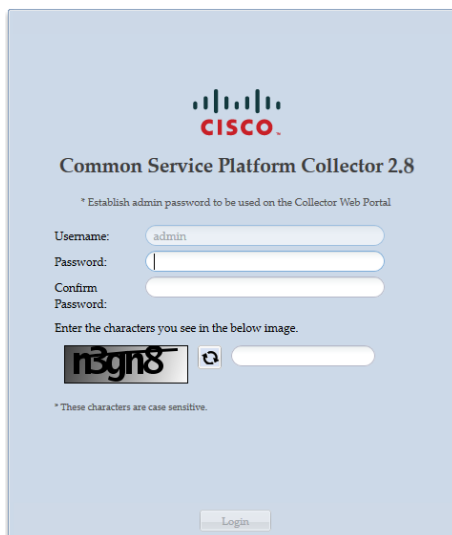


3. Select option 3 to go to the Command Line (Shell) if you would like to use CLI commands to configure the collector IP address instead of using the installation wizard. Refer to [Configure CSPC appliance via CLI](#) for instructions.

## Setup the Software Appliance for the First Time

Open the browser and enter the URL displayed at the bottom of the last screen in the previous step using the following URL format: `https://<cspc-server-ip>:8001/`.

The first time you log in, the installation wizard will prompt you to establish an **admin** password.



- Enter an **admin** password and confirm it.



**Note** Passwords must be at least (8) characters long and must contain

- At least one lowercase letter (a, b, c, d...z)
- At least one Uppercase letter (A, B, C, D...Z)
- At least one number (0, 1, 2, 3...9)
- At least one special characters - ,@#!\$%^&\*()\_+|~-=\`{}[]:;';<>?,/).

- Enter the characters shown in the grey captcha box. Click **Login**.

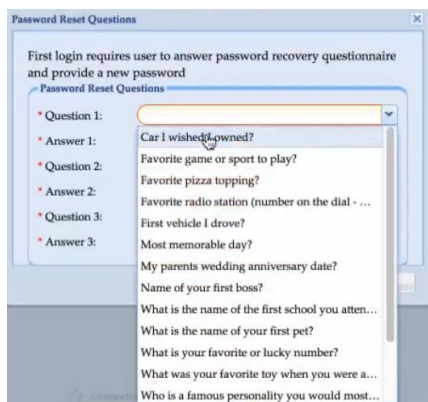


**Note** This will create a new admin password which will be used to access the collector UI via browser.



**Note** Record the admin password!

- You will be prompted to login again. Enter the **credentials** you just created, and the captcha characters. Click **Login**.
- Select and answer the password reset questions when prompted and click **OK**.



- Read and accept the Cisco Systems - End User License Agreement. The **Install** screen for the collector is displayed.

## Configure CSPC using the Wizard

In this section, you will see how to use the workflow provided by the wizard to configure the CSPC to collect device information.

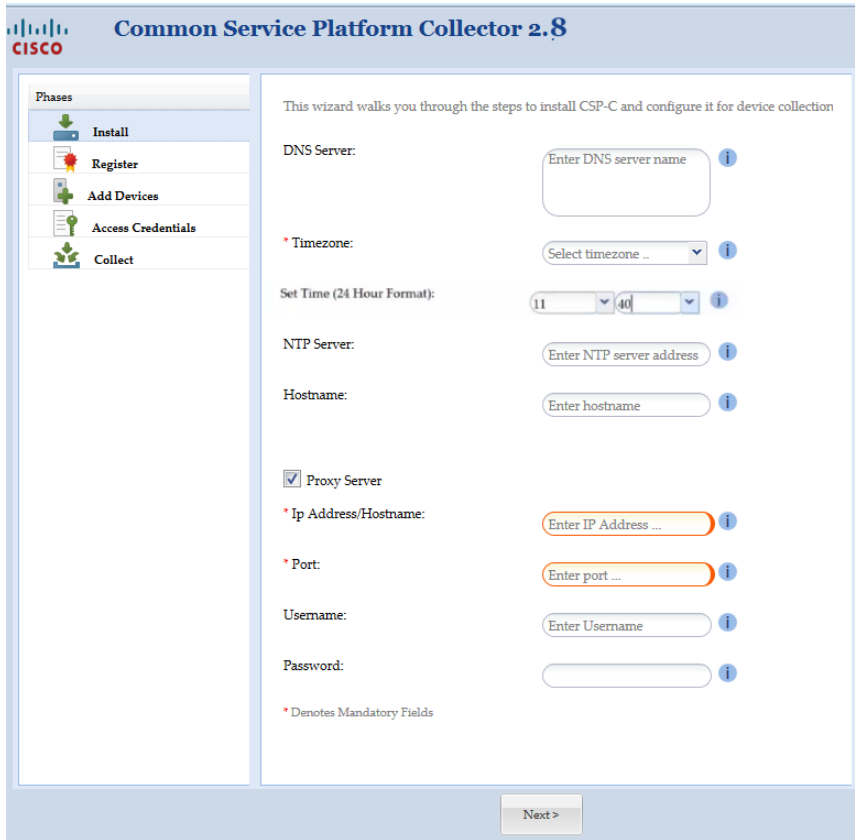
### Install

The **Install** and **Register** screens appear only the first time you log into the CSPC. The red asterisk \* indicates a required field.



**Note** Do not skip these first two configuration steps because they do not appear with subsequent logins to the wizard.





**Common Service Platform Collector 2.8**

Phases

- Install
- Register
- Add Devices
- Access Credentials
- Collect

This wizard walks you through the steps to install CSP-C and configure it for device collection

DNS Server:

\* Timezone:

Set Time (24 Hour Format):  :

NTP Server:

Hostname:

Proxy Server

\* Ip Address/Hostname:

\* Port:

Username:

Password:

\* Denotes Mandatory Fields

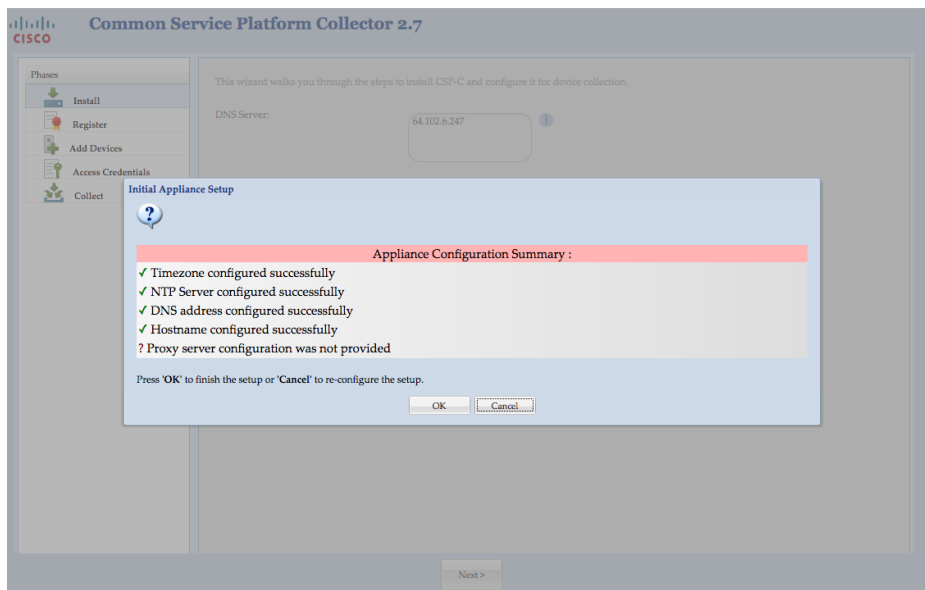
Next >



**Note** Enter time in 24-hour format and always ensure the date and time of the collector appliance is accurate with respect to the installed location time zone or else the appliance might be at risk to fail communicating with Cisco.



**Note** Proxy server is optional. It will take up to 30 seconds to finish installing the collector followed by a configuration summary.



- Review the Initial Appliance Setup, and click **OK** to finish the setup or click **Cancel** to go back to the - **Install** step and make any necessary corrections.

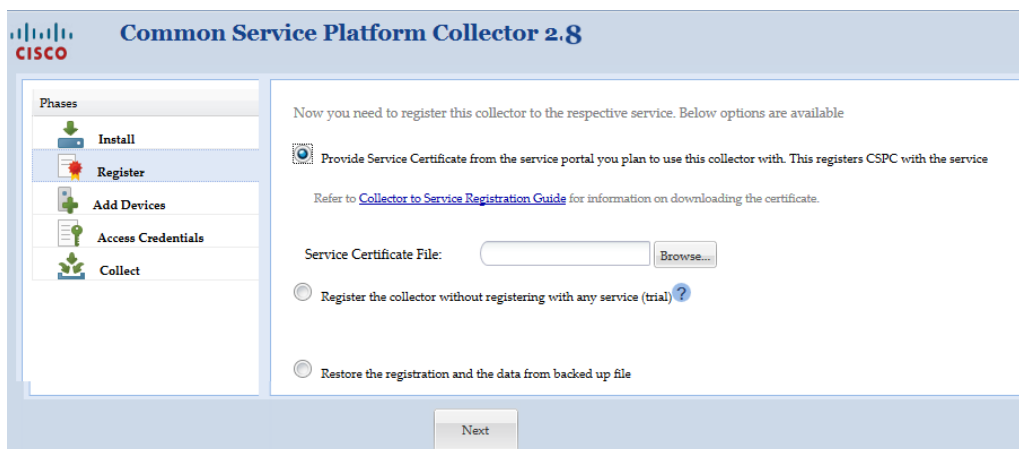
## Register

It is a leading practice to register the collector to a service such as Partner Support Service or Smart Net Total Care during the initial software installation. You should have generated and saved a Registration Certificate file from the specific service portal. In the **Register** screen of the wizard you will apply the registration certificate to the collector.



**Note**

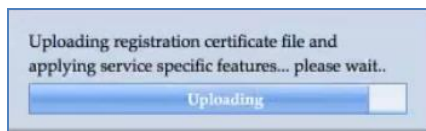
If you skip this configuration step and choose to register the collector without registering with a service, you will need to follow the registration upgrade instructions in the [CSPC User Guide](#) in order to be able to upload collected data to Cisco. The **Register** screen does not appear with subsequent logins to the wizard.



**Note**

You must be connected to the Internet in order to register the collector to Cisco.

- Select the first option, **Provide Service Certificate from the service portal you plan to use this collector with, to register the CSPC to the Service.**
- **Browse** to the Service Certificate file you downloaded earlier.
- Click **Next** at the bottom of the screen to continue with registration.



- This takes several minutes, wait till the wizard uploads the registration certificate file and applies service specific rules package and components. Click **OK** when the successful upload message is displayed.

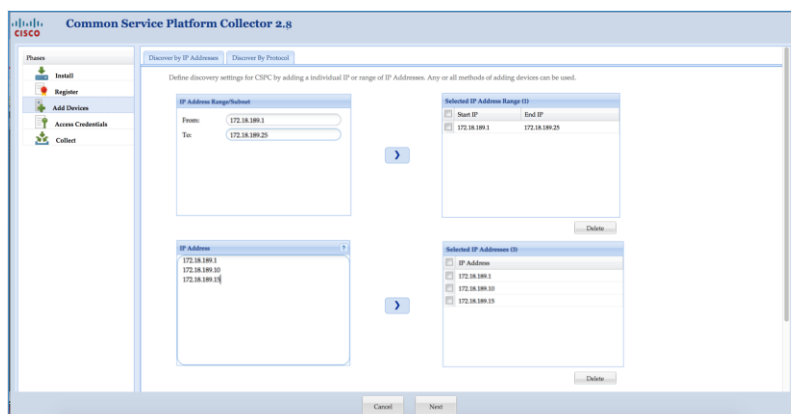
## Add Devices

In order to discover network devices and collect device data, you must enter the device credentials. In this section, you will see the process of configuring the CSPC Collector to discover by IP Address or by Protocol from the **Add Devices** screens.

The IP addresses that are referenced should be as tight or as restrictive as possible, while allowing coverage for all required devices.

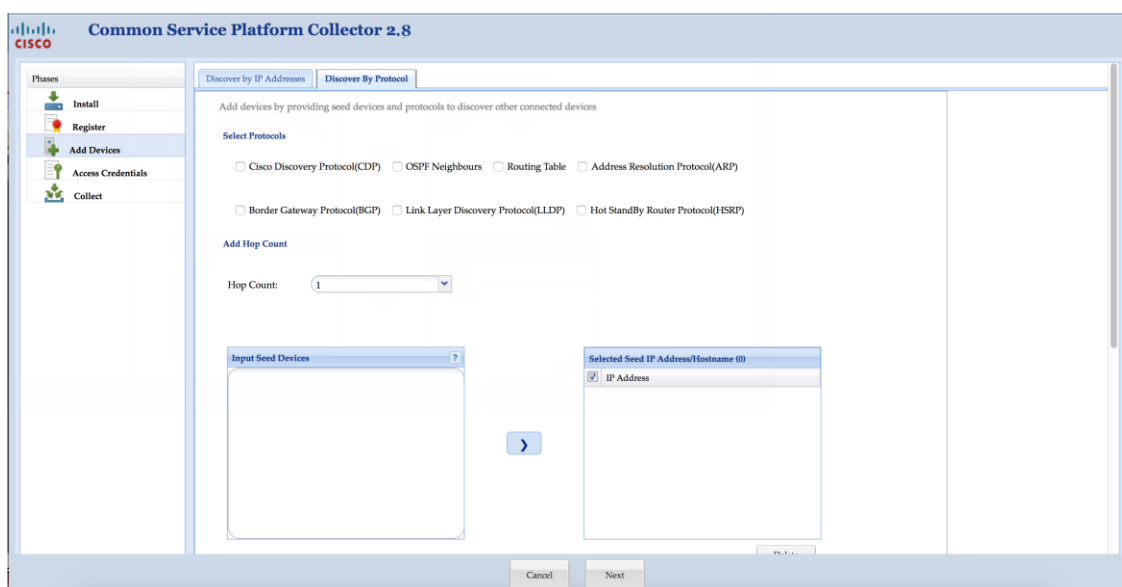
- The two lists specify which IPs the CSPC may use for collector operations such as discoveries or data collection.
- Specific IPs can be provided or wildcards can be used to replace octets of an IP to create a range.
- If an IP or range of IPs is not included in these fields, the CSPC will not communicate with a device that has such an IP.
- Entering \*.\*.\* will allow CSPC to use the credential with any IP. For example: 172.16.\*.\* would only allow the credentials to be used for devices in the 172.16.0.0/16 subnet.

As your network changes, you can return to the CSPC installation wizard and modify the list of devices.



You can add devices by entering a specific IP address or an IP address range. Use > to add your entries to the selected IP Address or selected IP Address Range lists.

- Click the Discover by Protocol tab if you have seed devices or want to discover other connected devices using protocols. Discovering devices by protocol will take longer than Discover by IP Address.
- Select the required Protocol(s), HOP Count, and Seed IP Address. Use > to add the devices to the selected Seed IP Address list.
- When done specifying devices, click **Next**.

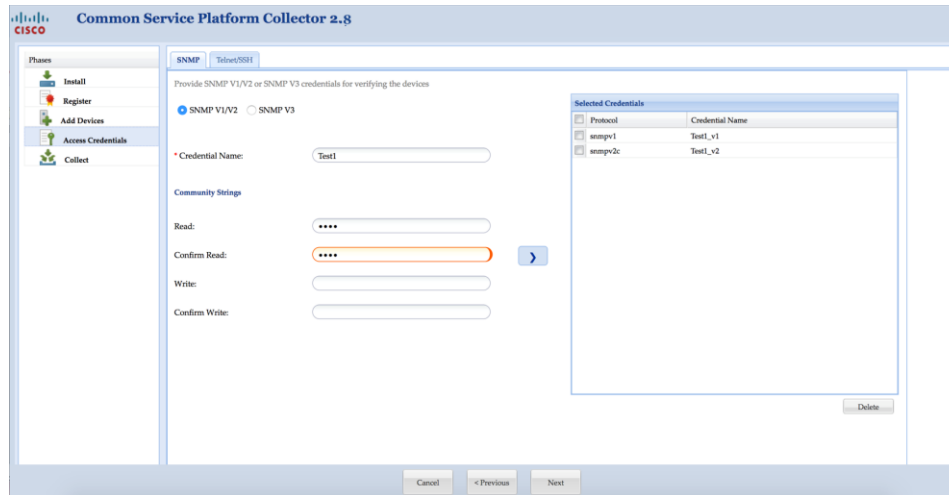


## Access Credentials

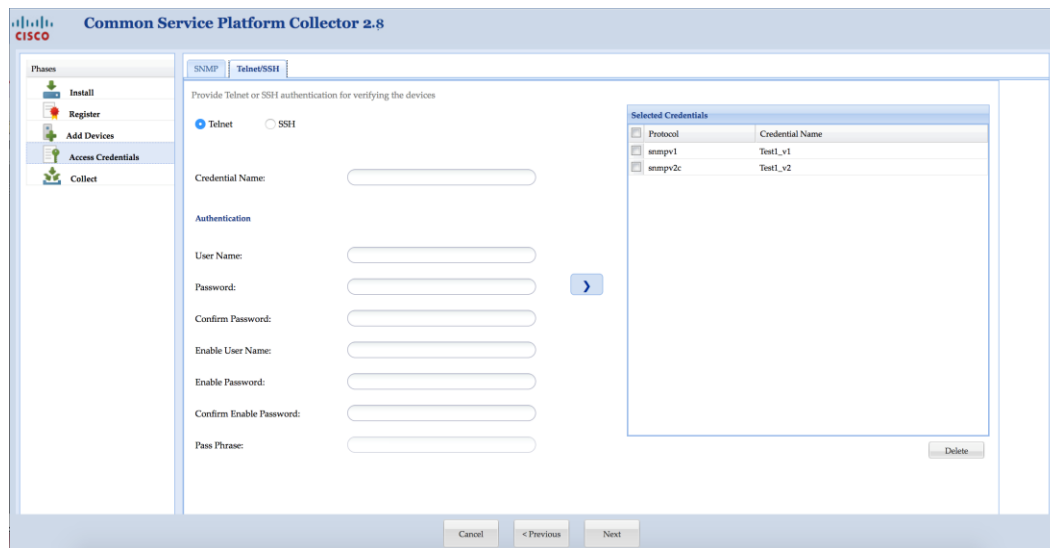
Collector operation requires that you enter the CSPC device credentials in order to discover network devices and collect device data. The setup of device credentials in CSPC is used for two purposes:

- SNMP credentials are used for the initial discovery of the devices, and for data collection.
- In addition to SNMP, the remaining credentials (Telnet or SSH) are used for data collection from the discovered devices.

You can return to the wizard workflow to make changes to the Access Credentials as your network changes.



- You can add credential using one of following and click **Next**:
- If you select **SNMPV1/V2** enter **Credential Name**, and **Read String**. Use > to add the credential to the Selected Credentials list.
- If you select **SNMPV3** enter **Credential Name**, **User Name**, **Auth Algorithm**, **Password**, **Privacy Algorithm**, and **Password**. Use > to add the credential to the Selected Credentials list.



## Collect

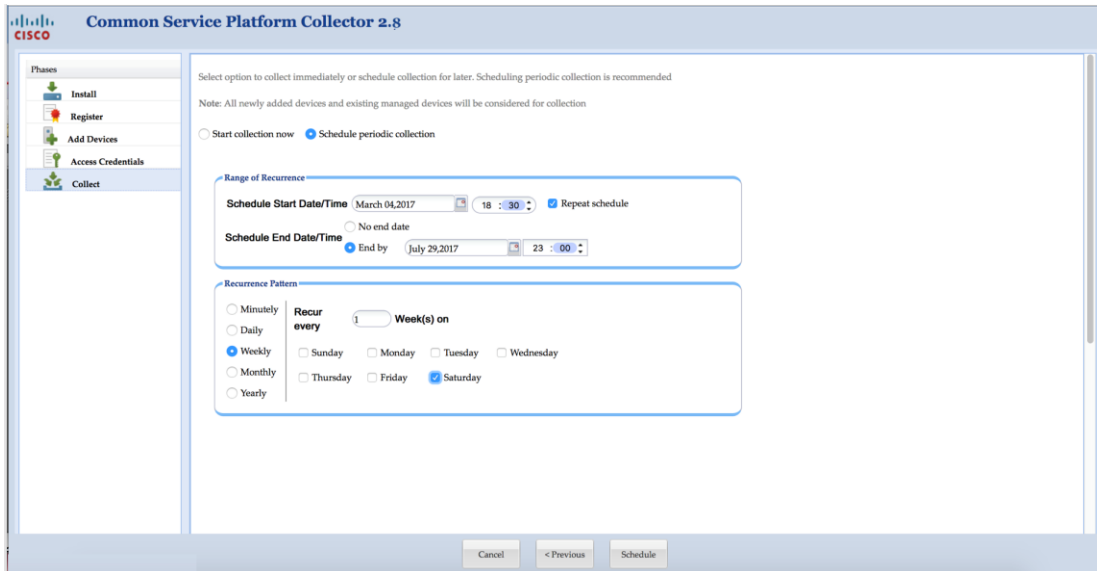
The final step of installing a CSPC Collector is to complete the process of discovering devices, collecting device information and uploading the inventory to the Cisco Data Center. From the CSPC wizard **Collect** screen, two options are available for device discovery, inventory collection and upload.

- Start the discovery, collection, and upload on demand right now.
- Create a collection schedule that recurs on a periodic basis.

Scheduling periodic collections is a leading practice.

Select **Start Collection now** and click **Collect Now** to start collection instantly or click **Schedule Periodic Collection** and click **Schedule** to collect at a later time. You can schedule **Start** and **End Date/Time** or select the Recurrence pattern as **Minutely**, **Daily**, **Weekly**, **Monthly**, or **Yearly** as shown in figure below.

It is recommended to schedule once a week.



## Port Usage Information

Connection to the list of Cisco servers (IP's and ports) in the below table is needed for the collector to communicate with them. In addition, the CCO login credentials that is registered and associated to the service contract is also needed. The CSPC uses SSL for uploading to the Cisco Data Center. ACL's on your firewall might need to be configured to allow the CSPC to upload successfully.

The CSPC collector supports on demand and automatic upgrades.

Note: By default, the auto-update feature is disabled. You should enable the auto-update feature to reduce the maintenance time of the collector.

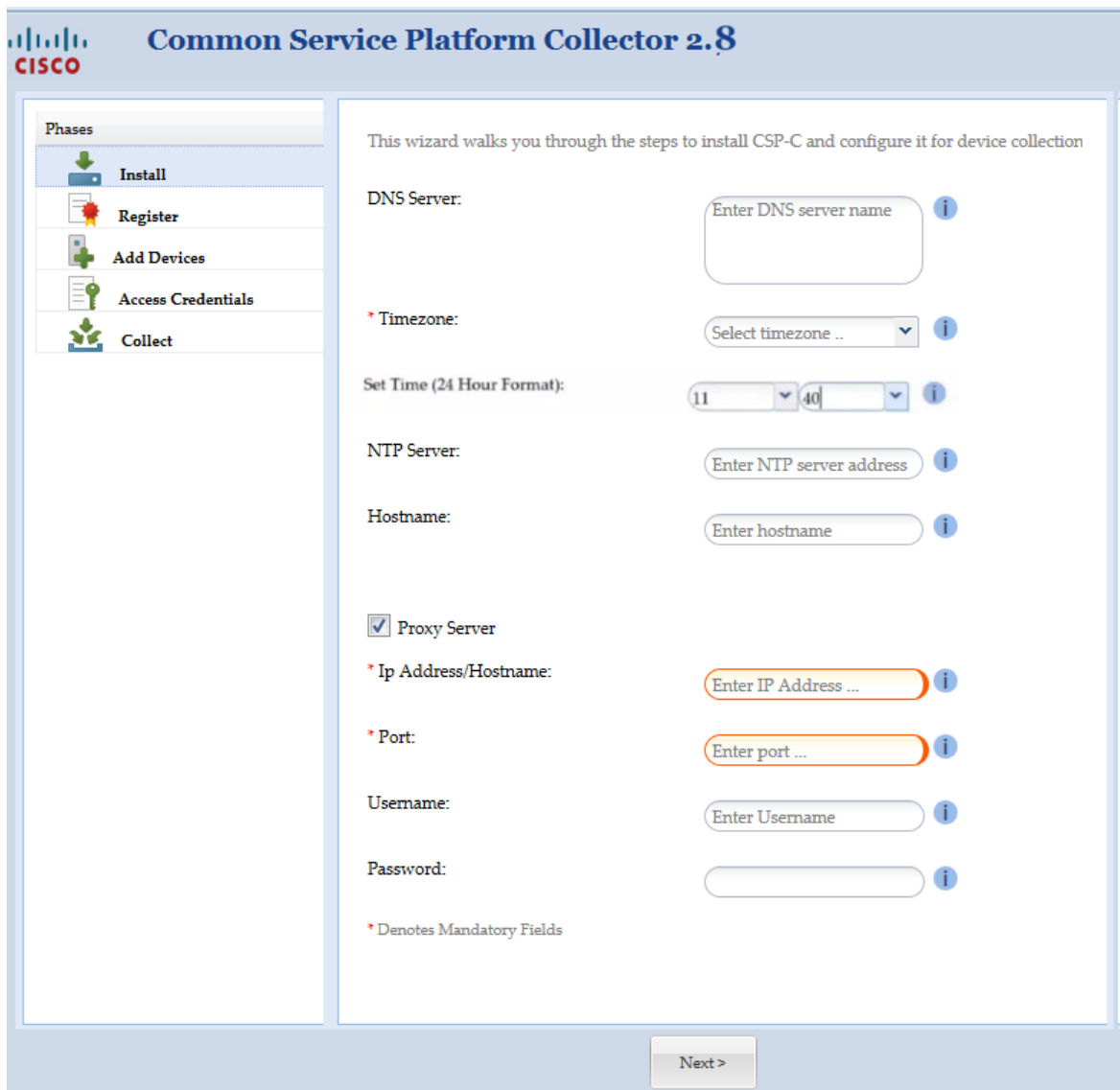
Host Name	IP Address	Port
concsoweb-prd.cisco.com	72.163.7.113	HTTPS (TCP/443) outbound
dl.cisco.com dl1.cisco.com dl2.cisco.com	72.163.7.60 72.163.7.60 173.37.146.12	HTTPS (TCP/80) and HTTPS (TCP/443) outbound
sso.cisco.com	173.37.144.208	HTTPS (TCP/443) outbound

## Access CSPC User Interface

In this section, you will see how to access the CSPC, following the above initial set-up..

Access the CSPC in a browser window by completing the following steps:

- Enter into the browser the IP Address of your collector using the following URL format:  
https://<cspc-server-ip>:8001/



**Common Service Platform Collector 2.8**

This wizard walks you through the steps to install CSP-C and configure it for device collection

**Phases**

- Install
- Register
- Add Devices
- Access Credentials
- Collect

DNS Server:

\* Timezone:

Set Time (24 Hour Format):

NTP Server:

Hostname:

Proxy Server

\* Ip Address/Hostname:

\* Port:

Username:

Password:

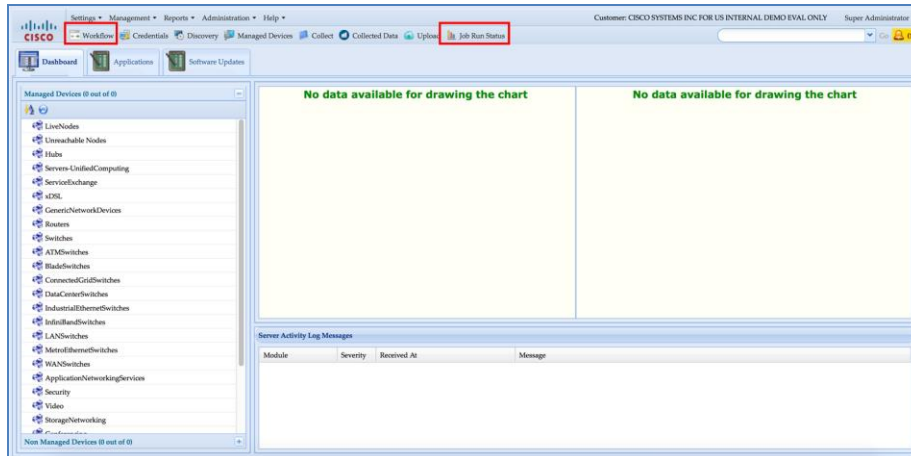
\* Denotes Mandatory Fields

Next >

- Enter the username, password and the text in the image, Click **Login**.

After all software is loaded, the CSPC graphical user interface (GUI) appears. From here you have access to all collector functions. Our [CSPC User Guide](#) provides details.

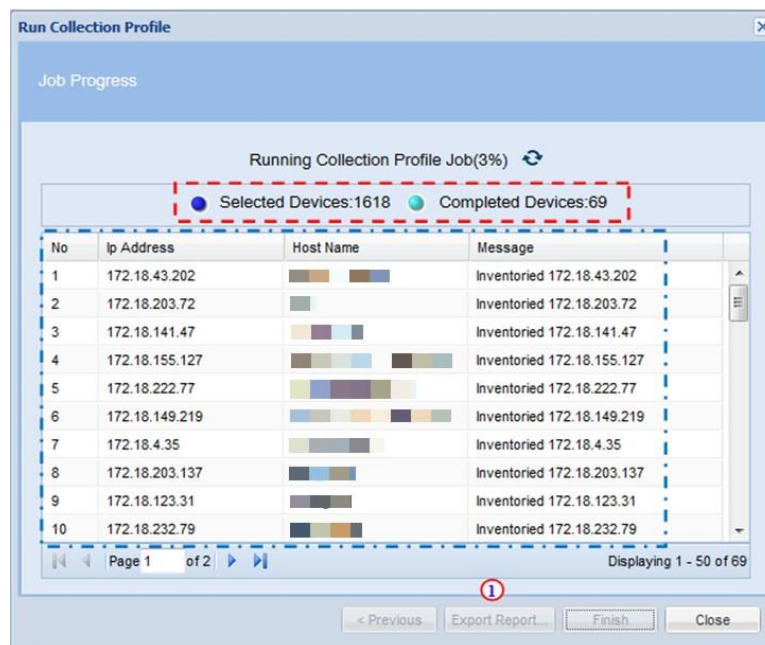
## Update Devices, Credentials and Collection Settings






Click the **Workflow** button in the toolbar to open the installation wizard to apply updates and changes to devices, credentials and collection settings.

## View Status of Discovery, Collection and Uploads

You can view status of collector jobs, click the **Job Run Status** button in the toolbar to view the results of discovery, collection and upload.



The details of the data collection are filled in. A summary is above  and the details are below. 

- You can review the collection report after the process has finished,, click **Export Report.** 
- Click **Close** when you are finished. The job will continue to Collection run in the background.





Once you have registered the collector with a service certificate, when the collection job completes, inventory will run, then the upload will automatically be sent to the Cisco Data Center. It may take up to 24 hours before your upload will be processed and available in the portal.

After the initial upload is processed, you can view device details in the portal: <https://services.cisco.com>

Subsequent uploads can be viewed by going to the service's portal.

- For SNTC select Library > Administration > Upload Processing
- For PSS select Library > Inventory > Inventory Collection

## Legal Information

THE SPECIFICATIONS AND INFORMATION REGARDING THE PRODUCTS IN THIS MANUAL ARE SUBJECT TO CHANGE WITHOUT NOTICE. ALL STATEMENTS, INFORMATION, AND RECOMMENDATIONS IN THIS MANUAL ARE BELIEVED TO BE ACCURATE BUT ARE PRESENTED WITHOUT WARRANTY OF ANY KIND, EXPRESS OR IMPLIED. USERS MUST TAKE FULL RESPONSIBILITY FOR THEIR APPLICATION OF ANY PRODUCTS.

THE SOFTWARE LICENSE AND LIMITED WARRANTY FOR THE ACCOMPANYING PRODUCT ARE SET FORTH IN THE INFORMATION PACKET THAT SHIPPED WITH THE PRODUCT AND ARE INCORPORATED HEREIN BY THIS REFERENCE. IF YOU ARE UNABLE TO LOCATE THE SOFTWARE LICENSE OR LIMITED WARRANTY, CONTACT YOUR CISCO REPRESENTATIVE FOR A COPY.

The Cisco implementation of TCP header compression is an adaptation of a program developed by the University of California, Berkeley (UCB) as part of UCB's public domain version of the UNIX operating system. All rights reserved. Copyright © 1981, Regents of the University of California.

NOTWITHSTANDING ANY OTHER WARRANTY HEREIN, ALL DOCUMENT FILES AND SOFTWARE OF THESE SUPPLIERS ARE PROVIDED "AS IS" WITH ALL FAULTS. CISCO AND THE ABOVE-NAMED SUPPLIERS DISCLAIM ALL WARRANTIES, EXPRESSED OR IMPLIED, INCLUDING, WITHOUT LIMITATION, THOSE OF MERCHANTABILITY, FITNESS FOR A PARTICULAR PURPOSE AND NONINFRINGEMENT OR ARISING FROM A COURSE OF DEALING, USAGE, OR TRADE PRACTICE.

IN NO EVENT SHALL CISCO OR ITS SUPPLIERS BE LIABLE FOR ANY INDIRECT, SPECIAL, CONSEQUENTIAL, OR INCIDENTAL DAMAGES, INCLUDING, WITHOUT LIMITATION, LOST PROFITS OR LOSS OR DAMAGE TO DATA ARISING OUT OF THE USE OR INABILITY TO USE THIS MANUAL, EVEN IF CISCO OR ITS SUPPLIERS HAVE BEEN ADVISED OF THE POSSIBILITY OF SUCH DAMAGES.

Any Internet Protocol (IP) addresses and phone numbers used in this document are not intended to be actual addresses and phone numbers. Any examples, command display output, network topology diagrams, and other figures included in the document are shown for illustrative purposes only. Any use of actual IP addresses or phone numbers in illustrative content is unintentional and coincidental.

All printed copies and duplicate soft copies are considered un-Controlled copies and the original on-line version should be referred to for latest version.



**Americas Headquarters**  
Cisco Systems, Inc.  
San Jose, CA

**Asia Pacific Headquarters**  
Cisco Systems (USA) Pte. Ltd.  
Singapore

**Europe Headquarters**  
Cisco Systems International BV Amsterdam,  
The Netherlands

Cisco has more than 200 offices worldwide. Addresses, phone numbers, and fax numbers are listed on the Cisco Website at [www.cisco.com/go/offices](http://www.cisco.com/go/offices).

Cisco and the Cisco Logo are trademarks of Cisco Systems, Inc. and/or its affiliates in the U.S. and other countries. A listing of Cisco's trademarks can be found at [www.cisco.com/go/trademarks](http://www.cisco.com/go/trademarks). Third party trademarks mentioned are the property of their respective owners. The use of the word partner does not imply a partnership relationship between Cisco and any other company. (1005R)

Printed in USA

09/18