



Secure. Mobile.

Powerfully Simple.



simple. 

Enable My Mobile Workforce

AGENDA

1. Simple IT Portfolio Overview
2. Wireless Solutions Overview
3. Demos – On Premise & Cloud
4. Q&A
5. Conclusion

Simple IT Portfolio Overview

- ✓ *Designed Your Needs*
- ✓ *Fits Your **Budget***
- ✓ *Grows with Your Business*

Simple, Secure, Reliable Networking



Secure My Business

with Secure Branch

- Meraki MX
- ISR 1100
- Umbrella
- NGFW Low
- RV Series
- HyperFlex, UCS + Veeam

Secure against threats & protect your data



Enable My Mobile Workforce

with Secure Wireless

- Meraki MR
- Mobility Express
- Umbrella
- WebEx

Increase employee productivity & flexibility



Optimize My Business

with Network Reliability

- Meraki Full Stack
- Cat2K, Mobility Express, ISR 1100
- Umbrella
- SBTG
- HyperFlex, UCS + Veeam
- WebEx

Ensure always-on with simple, smart solutions



Connect My Teams

with Intuitive Collaboration

- WebEx
- WebEx Teams

Connect teams with intuitive collaboration



Fuel My Business

with Converged Infrastructure

- HyperFlex
- UCS + Veeam

Security, simplicity and control of your computing, storage and connectivity



Today's
Webinar Theme:

Mobile Workforce

with Secure Wireless

Freedom: Teams collaborate and work how and where they want

Productivity: Increase engagement and communication

Connectivity: Secure devices, apps and services

Retention: Attract and keep the best talent

Solution Overview:

Cisco On Premise and Cloud Wireless

Our Speakers...



Rush Johnson, BDM



Will Hefner, VSS

Business challenges with growing wireless demand



Limited IT staff
and resources



If the WLAN is slow,
employees won't adopt
wireless applications
and policies



If your Wi-Fi doesn't
keep up, customers might
go elsewhere

Simple, Secure, and Scalable

Solutions for every situation...

On Premise

Flexible On-Premise Portfolio to meet
Size and Scaling Requirements



Cisco On-Prem
Core Infrastructure



Spark



Wireless



SD-WAN

Cloud

One Intelligent Network Manages It
All from the Cloud



Cisco Meraki
Core Infrastructure



Wireless



SD-WAN

What Is Cisco Mobility Express?

On Premise Wireless



Fast IT

3-step over-the-air wireless network configuration with Cisco WLAN Express Setup Wizard



Manage Up to 100 Access Points

Network management for up to 100 access points and 2000 clients



Runs on

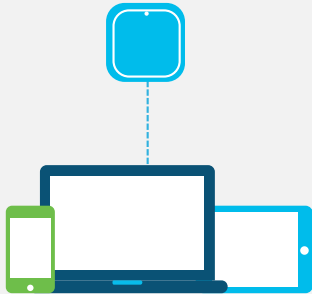
Cisco® Aironet® 1540, 1560, 1815, 1830, 1850, 2800, 3800 and 4800 802.11ac Wave 2 Access Points

Simplifies and accelerates Wi-Fi deployment

Fast IT: Setup in Minutes

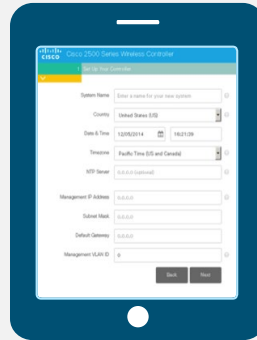
Connect using any wireless device

1



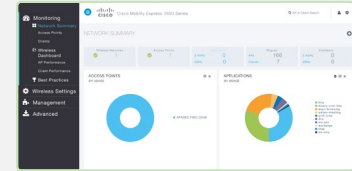
Configure multiple APs simultaneously with setup wizard

2



Use best-practice templates with advanced features out-of-the-box

3



- Radio Resource Management
- Guest Access
- Application Visibility
- CleanAir
- Band Select
- Client Profiling

High-end features, no price premium

Cisco 802.11ac Wave 2-capable access points offer:

- Simultaneous serving of clients and wireless controller functionality
- Improved client density support with Multiuser Multiple Input, Multiple Output (MU-MIMO) technology
- Increased scale and coverage
- Enterprise Class features and hardware



The 1100 ISR: Your Office in a Box.

Integrated Mobility Express



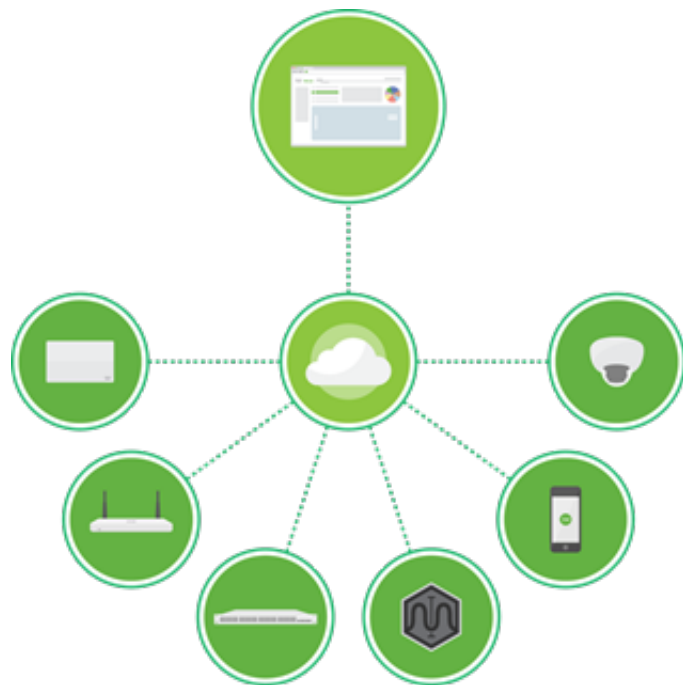


Demo: Mobility Express UI

You have options....

Simplifying IT with cloud management

Cisco Meraki



A complete cloud-managed IT solution

Wireless, switching, security, SD-WAN, application performance management, unified endpoint management (UEM), and security cameras

Integrated hardware, software, and cloud services

Leader in cloud-managed IT

Among Cisco's fastest growing portfolios

250k+

Unique customers

3.5M+

Meraki devices
online

5.5M+

Active Meraki
dashboard users

Secure guest wireless in seconds

Splash page

SSID: (MerakiCorp)

Splash pages on this SSD are enabled but writing on the access control subtab

Official themes

- Modern
- Fluid

Custom themes

- Copy of Simple
- Combine Multiple Auth Types
- Block Everyone
- Simple
- Grumpy Cat (warning: funny)

Pick a base: Copy

Custom splash URL

Or provide a URL, where users will be redirected to

Customize your page

Message: Welcome to

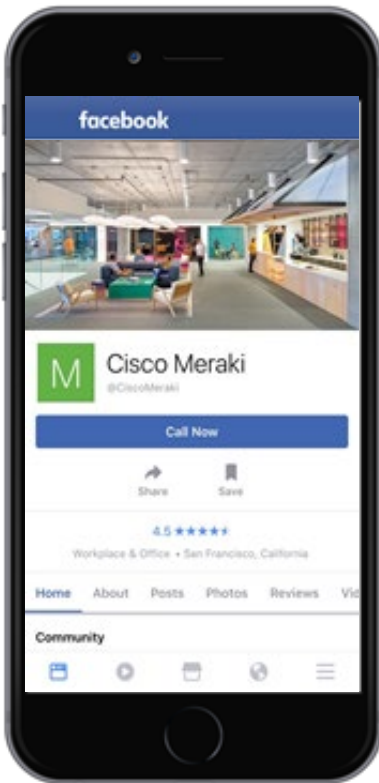
Splash logo: Upload a logo

Splash language: English

Splash behavior

Splash frequency: Every day

Where should users go after the splash page? The URL, or A different



Color customization

Color Match: (Match)

Background	Text	Links
White	Black	Blue
Light Gray	Dark Gray	Light Blue
Light Green	Dark Green	Light Green

Preview

Rapidly deploy secure guest WiFi with one-click client isolation that protects devices and network integrity.

Increase brand awareness and customer engagement through integrated Facebook or Google sign-on, enabling deeper social media analytics.

Deploy targeted advertising via built-in splash page hosting.

Powerful heuristics for smarter wireless troubleshooting

Meraki Wireless Health: A powerful heuristics engine that rapidly identifies anomalies impacting end users' experience across every stage of client connectivity — association, authentication, IP addressing, and DNS availability — for rapid root cause analysis and response.

Quickly identify worst-performing access points & client devices, problematic latency, and specific failure reasons

Wireless health **BETA** for the last hour ▾

Overview **Connections** Packet latency

SSID: All SSIDs ▾ VLAN: All VLANs ▾

# TOTAL CONNECTIONS	# FAILED CONNECTIONS	% CLIENT DEVICES W/ PROBLEMS	AVG # FAILED CONNECTIONS PER PROBLEMATIC CLIENT
4950	1453	450	3

Are there problematic connection steps?



AP → client latency by traffic type

Traffic types below are detected from DSCP tags.

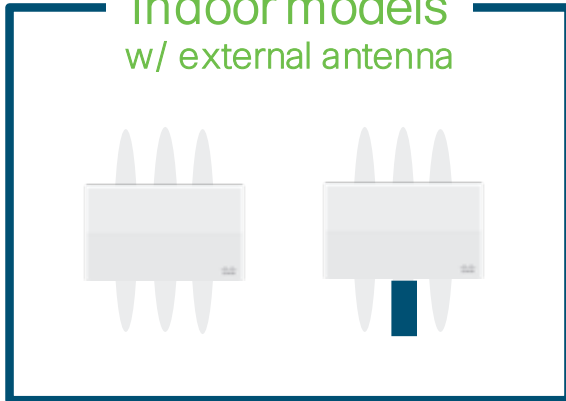


We have an AP for every occasion

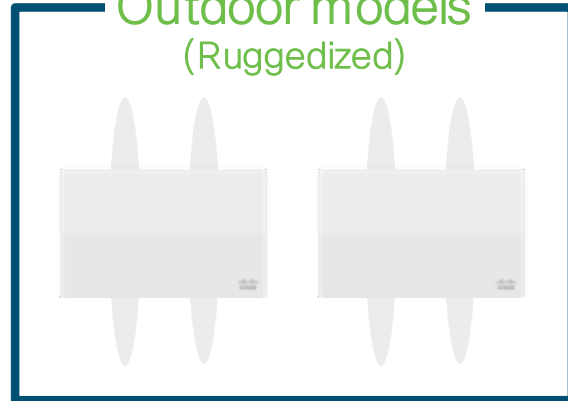
Indoor models



Indoor models w/ external antenna



Outdoor models (Ruggedized)



Leverage the Meraki full stack for even greater benefits



Wireless Access Points

Optimized for high-density with 802.11ac and bluetooth



Security Appliances

Feature rich security and unified threat management platform



Switches

Layer 2 and layer 3 switches for mission-critical networks



Enterprise Mobility Management

Unified managed and control of thousands of devices



MI

Optimize User Experience,
Accelerate IT



Security Cameras

Streamline deployment and monitoring of video security cameras

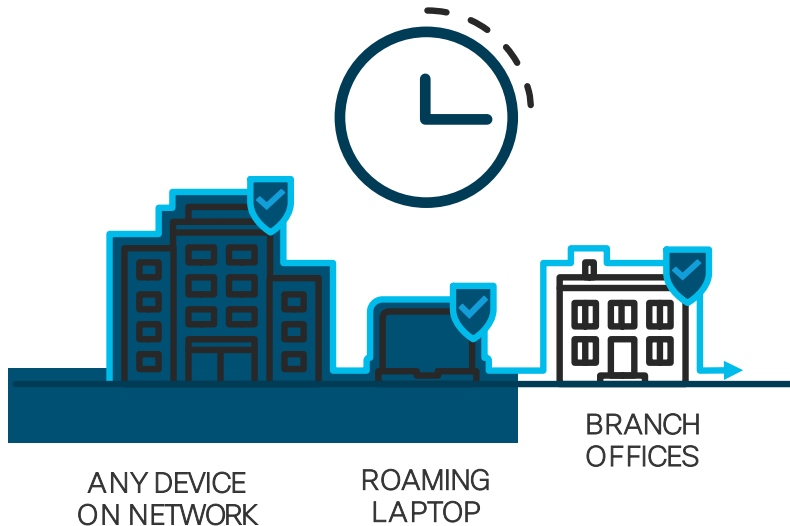
A complete cloud-managed IT portfolio
Single-pane-of-glass management



Demo: Meraki Dashboard

Network Security in minutes: Cisco Umbrella

For both Mobility Express & Meraki



On-network coverage

With one setting change

Integrated with Cisco ISR 1K and 4K series and Cisco WLAN controllers

Off-network coverage

With AnyConnect VPN client integration

Or with any VPN using lightweight Umbrella client

Want a **live, personal demo** of what you saw here today?

Click the link in the chat window!



Any Final Questions?

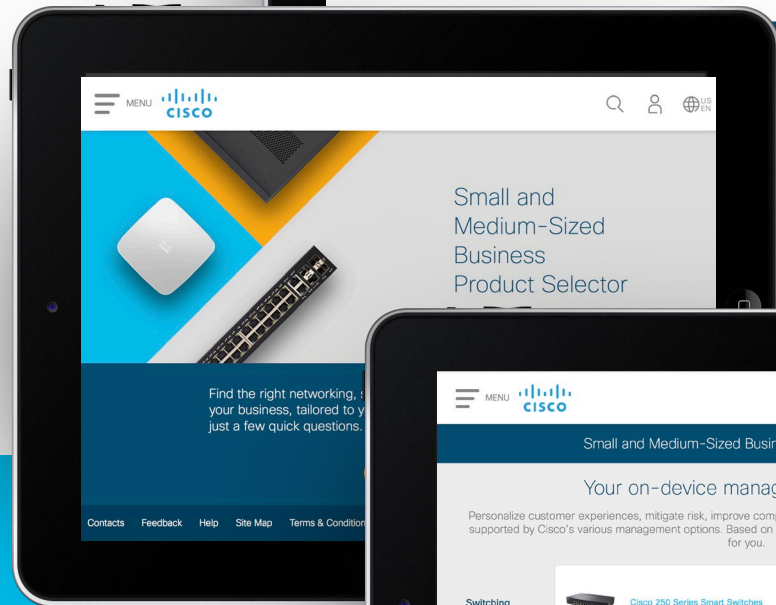
Before we go...

Check Out Our Solution Selector Tool

Simple guidance for choosing the perfect SMB network solutions for you!

You're running a business, and evaluating technology solutions and doing proof of concepts isn't your top priority. That's why we provide a simple tool to help you choose which products are best suited for your environment – switching, wireless, routing, and security – with just a few simple questions.

Try it now at
<http://bit.ly/ciscoselectortool>



We Appreciate Your Feedback!

Please take a moment to let us know if this session met your needs and expectations.

The confidential evaluation survey will open once the event window is closed.

