



# Cisco Small Business IT Webinars

*[cisco.com/go/smb](https://cisco.com/go/smb)*



*Enable My Mobile Workforce*

# AGENDA

1. Introduction

2. Solution Overview – *Insert Topic*

3. Case Studies

4. Demo – *Cloud*

5. Q&A

6. Conclusion



# Solution Overview

## *Cisco On Premise & Cloud Wireless*

Today's  
Webinar Theme:  
**Mobile  
Workforce**  
*with Secure Wireless*

**Freedom:** Teams collaborate and work how and where they want

---

**Productivity:** Increase engagement and communication

---

**Connectivity:** Secure devices, apps and services

---

**Retention:** Attract and keep the best talent

# Business challenges with growing wireless demand



Limited IT staff  
and resources



If the WLAN is slow,  
employees won't adopt  
wireless applications  
and policies



If your Wi-Fi doesn't  
keep up, customers might  
go elsewhere

# Simple, Secure, and Reliable

Solutions for every situation...

## On Premise

Flexible On-Premise Portfolio to meet Size and Scaling Requirements



Cisco On-Prem  
Core Infrastructure



Spark



Wireless



SD-WAN

## Cloud

One Intelligent Network Manages It  
All from the Cloud



Cisco Meraki  
Core Infrastructure



# What Is Cisco Mobility Express?

## *On Premise Wireless*



### Fast IT

---

3-step over-the-air wireless network configuration with Cisco WLAN Express Setup Wizard



### Manage Up to 100 Access Points

---

Network management for up to 100 access points and 2000 clients



### Runs on

---

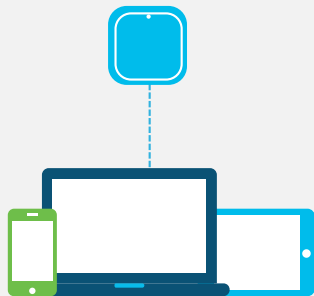
Cisco® Aironet® 1540, 1560, 1815, 1830, 1850, 2800, 3800 and 4800 802.11ac Wave 2 Access Points

# Simplifies and accelerates Wi-Fi deployment

## Fast IT: Setup in Minutes

Connect using any wireless device

1



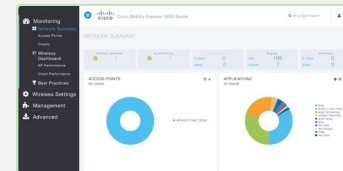
Configure multiple APs simultaneously with setup wizard

2



Use best-practice templates with advanced features out-of-the-box

3



- Radio Resource Management
- Guest Access
- Application Visibility
- CleanAir
- Band Select
- Client Profiling



# High-end features, no price premium

## Cisco 802.11ac Wave 2-capable access points offer:

- Simultaneous serving of clients and wireless controller functionality
- Improved client density support with Multiuser Multiple Input, Multiple Output (MU-MIMO) technology
- Increased scale and coverage
- Enterprise Class features and hardware





# Case Study – Mobility Express

# Victoria University



“Students can access university resources no matter where they are with a Wi-Fi connection that is always up, always on and easy to access.”

**Professor Peter Dawkins**

Vice-Chancellor and President, Victoria University



# Demo – *Cloud – Meraki*

# Simplifying IT with cloud management

*Cisco Meraki*

## A complete cloud-managed IT solution

Wireless, switching, security, SD-WAN, application performance management, unified endpoint management (UEM), and security cameras

Integrated hardware, software, and cloud services

## Leader in cloud-managed IT

Among Cisco's fastest growing portfolios

250k+

Unique customers

3.5M+

Meraki devices  
online

5.5M+

Active Meraki  
dashboard users



# Secure guest wireless in seconds

## Splash page

SSID: Meraki-Guest

Splash pages on this SSD are enabled by setting on the access control subtab.

### Official themes

- Modern
- Fluid

### Custom themes

- Copy of Simple
- Combine Multiple Auth Types
- Block Everyone
- Simple
- Chumpy Cat (warning: funny)

File a new... Copy

### Custom splash URL

- Or provide a URL, where users will be redirected to!

### Customize your page

Message: Welcome to

### Splash logo

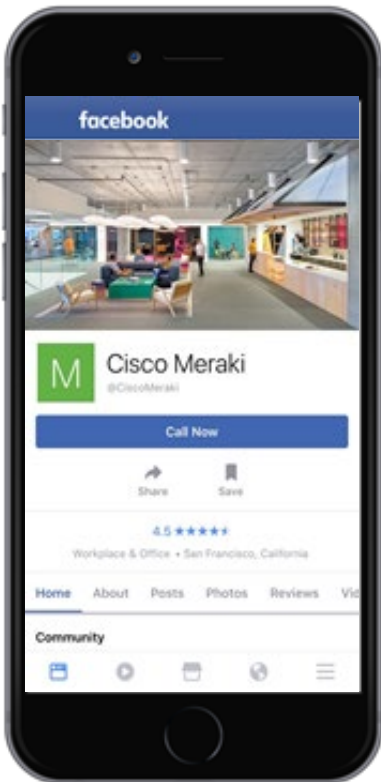
Upload a logo

### Splash language

### Splash behavior

Splash frequency: Every day

Where should users go after the splash page? The URL is



### Color customization

Color Mode:  Light  Dark

Item	Background	Text	Link
Header 1	<input type="color"/>	<input type="color"/>	<input type="color"/>
Header 2	<input type="color"/>	<input type="color"/>	<input type="color"/>

Preview

Rapidly deploy secure guest WiFi with one-click client isolation that protects devices and network integrity.

Increase brand awareness and customer engagement through integrated Facebook or Google sign-on, enabling deeper social media analytics.

Deploy targeted advertising via built-in splash page hosting.

# Powerful heuristics for smarter wireless troubleshooting

**Meraki Wireless Health:** A powerful heuristics engine that rapidly identifies anomalies impacting end users' experience across every stage of client connectivity — association, authentication, IP addressing, and DNS availability — for rapid root cause analysis and response.

Quickly identify worst-performing access points & client devices, problematic latency, and specific failure reasons

Wireless health **BETA** for the last hour ▾

Overview **Connections** Packet latency

SSID: All SSIDs ▾ VLAN: All VLANs ▾

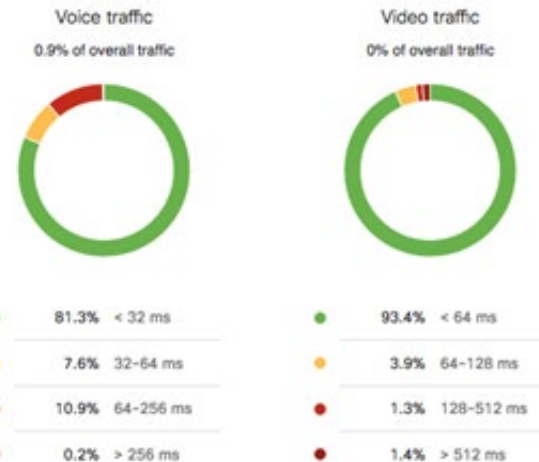
# TOTAL CONNECTIONS	# FAILED CONNECTIONS	% CLIENT DEVICES W/ PROBLEMS	AVG # FAILED CONNECTIONS PER PROBLEMATIC CLIENT
4950	1453	450	3

Are there problematic connection steps?



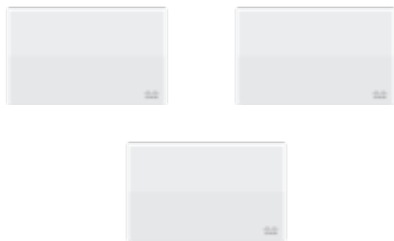
AP → client latency by traffic type

Traffic types below are detected from DSCP tags.

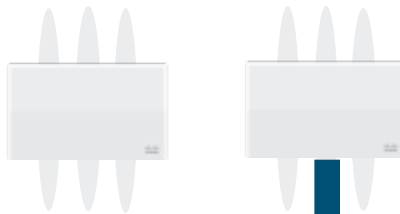


# We have an AP for every occasion

## Indoor models



## Indoor models w/ external antenna



## Outdoor models (Ruggedized)





# Leverage the Meraki full stack for even greater benefits



## Wireless Access Points

Optimized for high-density with 802.11ac and bluetooth



## Security Appliances

Feature rich security and unified threat management platform



## Switches

Layer 2 and layer 3 switches for mission-critical networks



## Enterprise Mobility Management

Unified managed and control of thousands of devices



## MI

Optimize User Experience,  
Accelerate IT



## Security Cameras

Streamline deployment and monitoring of video security cameras

A complete cloud-managed IT portfolio  
Single-pane-of-glass management



# Demo – *Meraki* *Dashboard*

Want a **live, personal demo** of what you saw here today?

*Click the link in the chat window!*



Q&A



Before we go...

Click [the link](#) in the chat for  
a free trial of Insert Title!

# Check Out Our Solution Selector Tool

Simple guidance for choosing the perfect SMB network solutions for you!

You're running a business, and evaluating technology solutions and doing proof of concepts isn't your top priority. That's why we provide a simple tool to help you choose which products are best suited for your environment – switching, wireless, routing, and security – with just a few simple questions.

Try it now at  
<http://bit.ly/ciscoselectortool>



We Appreciate  
Your  
Feedback!

Please take a moment to let us know if this session met your needs and expectations.

The confidential evaluation survey will open once the event window is closed.



