



Cisco Small Business IT Webinars

cisco.com/go/smb



Enable My Mobile Workforce

AGENDA

1. Simple IT Portfolio Overview
2. Wireless Solutions Overview
3. Demo – Cloud
4. Q&A
5. Conclusion



Solution Overview

Cisco On Premise & Cloud Wireless



Mark Shealy
VSAM

Business challenges with growing wireless demand



Limited IT staff
and resources



If the WLAN is slow,
employees won't adopt
wireless applications
and policies



If your Wi-Fi doesn't
keep up, customers might
go elsewhere

Simple, Secure, and Reliable

Solutions for every situation...

On Premise

Flexible On-Premise Portfolio to meet
Size and Scaling Requirements



Cisco On-Prem
Core Infrastructure



Spark



Wireless



SD-WAN

Cloud

One Intelligent Network Manages It
All from the Cloud



Cisco Meraki
Core Infrastructure



Wireless



SD-WAN

What Is Cisco Mobility Express?

On Premise Wireless



Fast IT

3-step over-the-air wireless network configuration with Cisco WLAN Express Setup Wizard



Manage Up to 100 Access Points

Network management for up to 100 access points and 2000 clients



Runs on

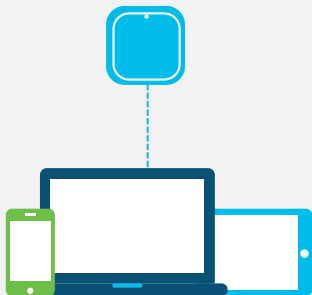
Cisco® Aironet® 1540, 1560, 1815, 1830, 1850, 2800, 3800 and 4800 802.11ac Wave 2 Access Points

Simplifies and accelerates Wi-Fi deployment

Fast IT: Setup in Minutes

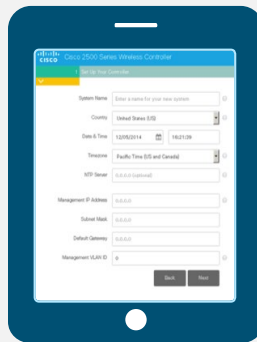
Connect using any wireless device

1



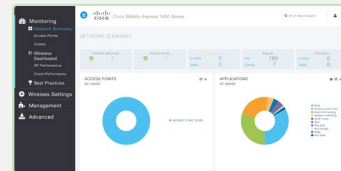
Configure multiple APs simultaneously with setup wizard

2



Use best-practice templates with advanced features out-of-the-box

3



- Radio Resource Management
- Guest Access
- Application Visibility
- CleanAir
- Band Select
- Client Profiling

High-end features, no price premium

Cisco 802.11ac Wave 2-capable access points offer:

- Simultaneous serving of clients and wireless controller functionality
- Improved client density support with Multiuser Multiple Input, Multiple Output (MU-MIMO) technology
- Increased scale and coverage
- Enterprise Class features and hardware



Overview of Access Points



Features	Cisco Aironet 1830	Cisco Aironet 1850	Cisco Aironet 2800	Cisco Aironet 3800	Aruba AP-325	Aruba AP-330	Ruckus R710
Standard	802.11ac Wave2	802.11ac Wave2	802.11ac Wave2	802.11ac Wave2	802.11ac Wave2	802.11ac Wave2	802.11ac Wave2
SU-MIMO	3x3:2	4x4:4	4x4:3	4x4:3	4x4:4	4x4:4	4x4:4
MU-MIMO	3x3:2	4x4:3	4x4:3	4x4:3	4x4:3	4x4:2SS	4x4:3
AC channel width	80Mhz with dynamic bandwidth selection (DBS)	80Mhz with dynamic bandwidth selection (DBS)	160Mhz with dynamic bandwidth selection (DBS)	160Mhz with dynamic bandwidth selection (DBS)	80Mhz	80Mhz/160Mhz up to 2x2:2	80Mhz
Number of Radios	1x 2.4GHz / 1 x 5GHz	1x 2.4GHz / 1 x 5GHz	1 x XOR (FRA, 2.4 and 5GHz capable) / 1 x 5GHz	1 x XOR (FRA, 2.4 and 5GHz capable) / 1 x 5GHz	1x 2.4GHz / 1 x 5GHz	1x 2.4GHz / 1 x 5GHz	1x 2.4GHz / 1 x 5GHz
Speed	Up to 870 Mbps	Up to 1.733Gbps	Up to 5.2 Gbps	Up to 5.2 Gbps	Up to 1.733Gbps	Up to 1.733Gbps	Up to 1.733Gbps
Antenna	Internal	Internal/External	Internal/External	Internal/External	Internal/External	Internal/External	Internal
Ethernet Ports	1x 10/100/1000	2x 10/100/1000	2x 10/100/1000	1x 10/100/1000 + 1x mGig (1, 2.5, and 5Gbps)	2x 10/100/1000	1x 10/100/1000, SmartRate Up to 2.5Gbps	2x 10/100/1000
Spectrum Intelligence	Spectrum Analysis	Spectrum Analysis	HDX CleanAir 160	HDX CleanAir 160	Spectrum Analysis	Spectrum Analysis	Spectrum Analysis
Beam Forming	Transmit Beamforming	Transmit Beamforming	ClientLink 4.0	ClientLink 4.0	Transmit Beamforming	Transmit Beamforming	BeamFlex+
Roaming	Optimized Roaming/ CCX/ 802.11r	Optimized Roaming/ CCX/ 802.11r	Optimized Roaming/ CCX/ 802.11r	Optimized Roaming/ CCX/ 802.11r	ClientMatch	ClientMatch	-
Management	Onboard controller, FlexConnect, Converged & Central Managed	Onboard controller, FlexConnect, Converged & Central Managed	Onboard controller version 8.3 and higher, FlexConnect, Converged & Central Managed	Onboard controller version 8.3 and higher, FlexConnect, Converged & Central Managed	Aruba Instant / Controller	Aruba Instant / Controller	Central Managed



Case Study – Mobility Express



Fitness



Demo – *Mobility Express* *UI*



Solution Overview

Cloud - Meraki

Simplifying IT with cloud management

Cisco Meraki

A complete cloud-managed IT solution

Wireless, switching, security, SD-WAN, application performance management, unified endpoint management (UEM), and security cameras

Integrated hardware, software, and cloud services

Leader in cloud-managed IT

Among Cisco's fastest growing portfolios

250k+

Unique customers

3.5M+

Meraki devices
online

5.5M+

Active Meraki
dashboard users



Secure guest wireless in seconds

Splash page

Start (View-Only)

Splash pages on this SSID are enabled by setting on the access control subtab.

Official themes

- Modern
- Fluid

Custom themes

- Copy of Simple
- Combine Multiple Auth Types
- Blank Everyone
- Simple
- Orunjoy Cat (warning: forked)

Preview: Copy

Custom splash URL

- Or provide a URL where users will be redirected?

Customize your page

Message: Welcome to

Splash logo

Upload a logo:

Splash language

Splash language: English

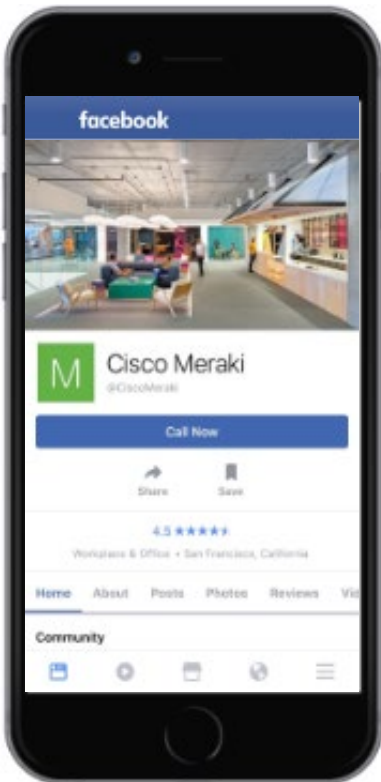
Splash behavior

Splash frequency: Every day (08:00-18:00)

Where should users go after the splash page? The URL of

A different URL

 CISCO Meraki



Color customization

Color Match: Match

Hex	Background	Text	Links
Color 1	<input type="text"/>	<input type="text"/>	<input type="text"/>
Color 2	<input type="text"/>	<input type="text"/>	<input type="text"/>

Preview

Rapidly deploy secure guest WiFi with one-click client isolation that protects devices and network integrity.

Increase brand awareness and customer engagement through integrated Facebook or Google sign-on, enabling deeper social media analytics.

Deploy targeted advertising via built-in splash page hosting.

Powerful heuristics for smarter wireless troubleshooting

Meraki Wireless Health: A powerful heuristics engine that rapidly identifies anomalies impacting end users' experience across every stage of client connectivity — association, authentication, IP addressing, and DNS availability — for rapid root cause analysis and response.

Quickly identify worst-performing access points & client devices, problematic latency, and specific failure reasons

Wireless health **BETA** for the last hour ▾

Overview **Connections** Packet latency

SSID: All SSIDs ▾ VLAN: All VLANs ▾

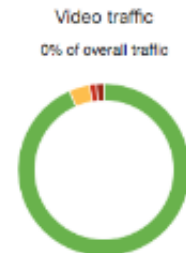
# TOTAL CONNECTIONS	# FAILED CONNECTIONS	% CLIENT DEVICES W/ PROBLEMS	AVG # FAILED CONNECTIONS PER PROBLEMATIC CLIENT
4950	1453	450	3

Are there problematic connection steps?



AP → client latency by traffic type

Traffic types below are detected from DSCP tags.

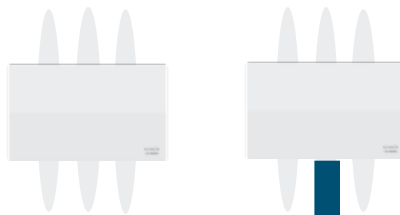


We have an AP for every occasion

Indoor models



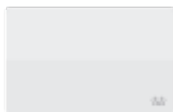
Indoor models w/ external antenna



Outdoor models (Ruggedized)



Leverage the Meraki full stack for even greater benefits



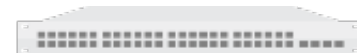
Wireless Access Points

Optimized for high-density with 802.11ac and bluetooth



Security Appliances

Feature rich security and unified threat management platform



Switches

Layer 2 and layer 3 switches for mission-critical networks



Enterprise Mobility Management

Unified managed and control of thousands of devices



MI

Optimize User Experience,
Accelerate IT



Security Cameras

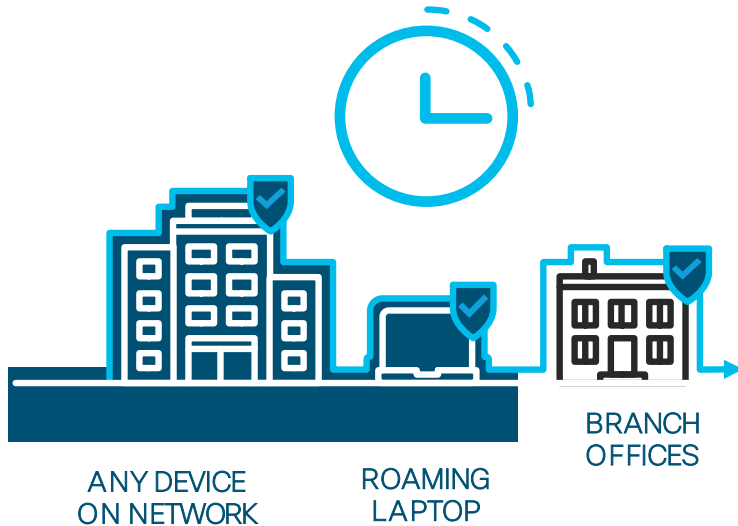
Streamline deployment and monitoring of video security cameras

A complete cloud-managed IT portfolio
Single-pane-of-glass management



Demo – *Meraki* *Dashboard*

Deployment in minutes: Cisco Umbrella Security



On-network coverage

With one setting change

Integrated with Cisco ISR 1K and 4K series and Cisco WLAN controllers

Off-network coverage

With AnyConnect VPN client integration

Or with any VPN using lightweight Umbrella client



Q&A



Before we go...

Click the link in the chat for
a free trial of the Meraki
Dashboard!

We Appreciate
Your
Feedback!

Please take a moment to let us know if this session met your needs and expectations.

The confidential evaluation survey will open once the event window is closed.

