



Article ID: 5032

Reboot and Reset Factory Default Settings on the WAP371

Objective

The factory default reset erases all configuration settings that have been modified by the user, and restores the device to its original settings. This may be helpful if you lose the password to a device and wish to regain access.

Note: It is advised to save a backup copy of the configuration before beginning this process. Refer to [Download/Backup Configuration on the WAP 371](#) for additional information.

Performing a reboot restarts the device with a saved configuration.

The objective of this article is to show you how to reset to factory default settings and how to reboot a WAP371 Wireless Access Point.

Applicable Devices

- WAP371

Software Version

- 1.0.1.5

Reset to Factory Default

There are two ways to reset the Access Point to the factory default configuration:

- Hardware reset
- Reset with the use of the web configuration utility

Hardware Reset

Step 1. Press the Reset button for approximately ten seconds with a pin located at the back of the device.



The Access Point reloads and is set to the default configuration settings.

Step 2. Login with the default credentials. The default username is *cisco*, and the default password is *cisco*.

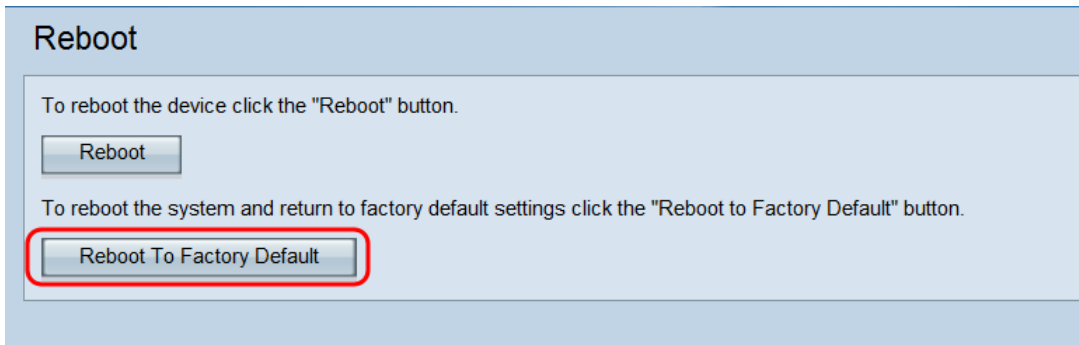
A screenshot of the Cisco Wireless Access Point login page. The page has a blue background. On the left, there is the Cisco logo and the text "Wireless Access Point". On the right, there are two input fields: "Username:" with the text "cisco" and "Password:" with six dots. Below the password field is a "Log In" button. At the bottom, there is a copyright notice: "© 2014 Cisco Systems, Inc. All rights reserved. Cisco, the Cisco logo, and Cisco Systems are registered trademarks or trademarks of Cisco Systems, Inc. and/or its affiliates in the United States and certain other countries."

Reset with the use of the Web Configuration Utility

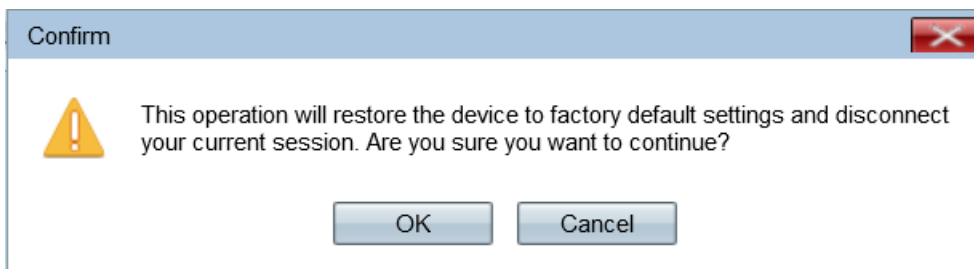
Step 1. Log in into the web configuration utility page and choose **Administration > Reboot**. The *Reboot* page opens:

A screenshot of the Cisco Reboot page. The page has a light blue background. At the top, there is a heading "Reboot". Below the heading, there is a paragraph: "To reboot the device click the 'Reboot' button." Below this paragraph is a button labeled "Reboot". Below that, there is another paragraph: "To reboot the system and return to factory default settings click the 'Reboot to Factory Default' button." Below this paragraph is a button labeled "Reboot To Factory Default".

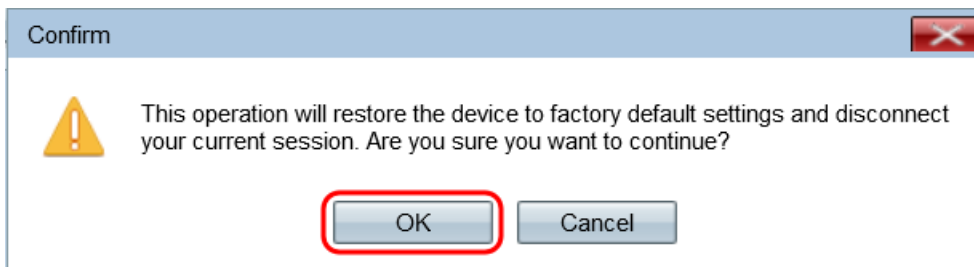
Step 2. To reset the device, click the **Reboot To Factory Default** button.



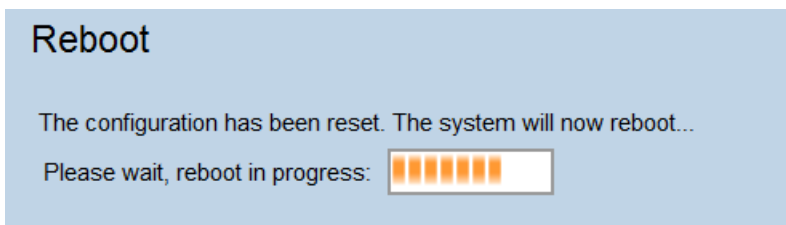
A *Confirm* page appears:



Step 3. Click **OK**.



A Progress Bar appears:



Step 4. After the reboot is completed, login with the default credentials. The default username is *cisco*, and the default password is *cisco*.

Rebooting the Device

There are two ways to reboot the Access Point:

- Hardware reboot
- Reboot with the use of the web configuration utility

Hardware Reboot

Step 1. Press the power button to turn off the device. After 10 seconds have passed, press the power button a second time to power the device back on.



The Access Point reboots and is refreshed.

Reboot with the use of the Web-based utility

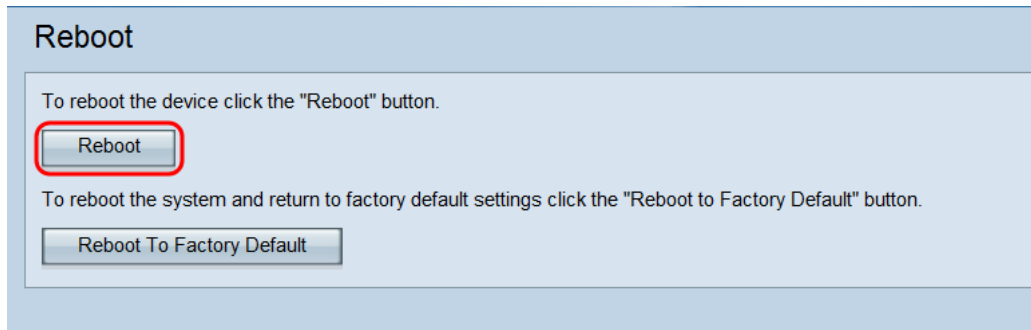
Step 1. Log in to the web configuration utility page and choose **Administration > Reboot**. The *Reboot* page opens:

Reboot

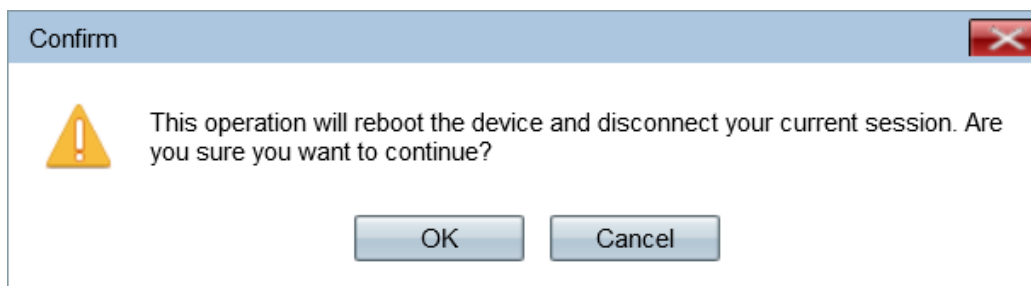
To reboot the device click the "Reboot" button.

To reboot the system and return to factory default settings click the "Reboot to Factory Default" button.

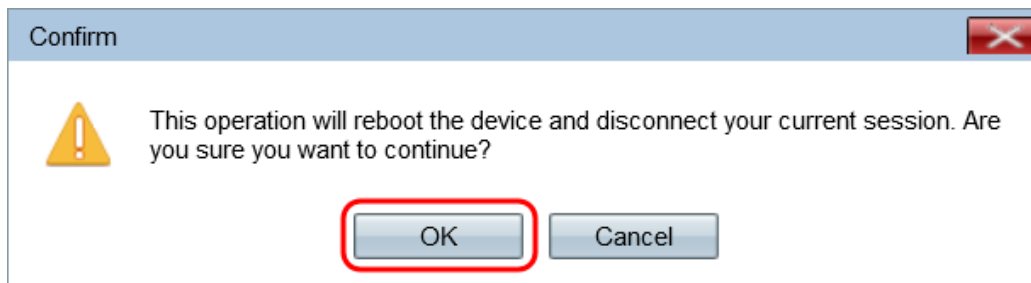
Step 2. To reboot the device, click the **Reboot** button.



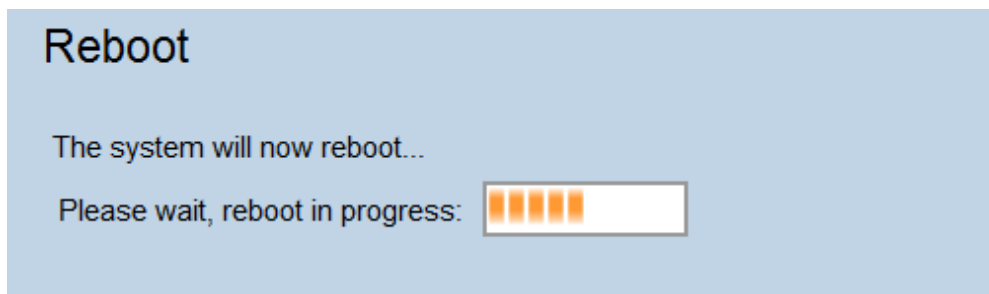
A *Confirm* page appears:



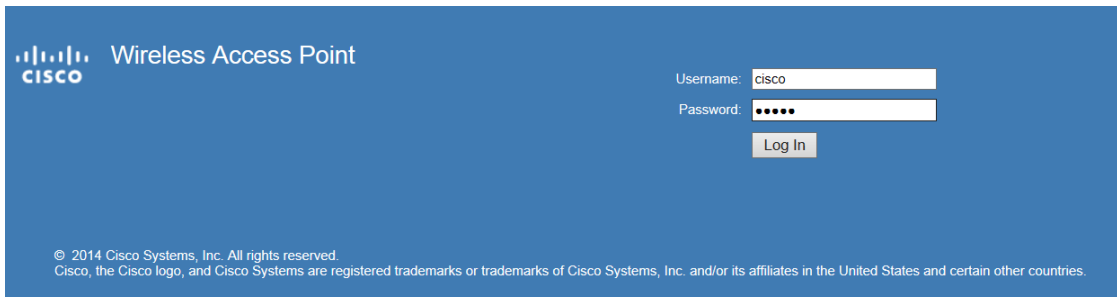
Step 3. Click **OK** to continue with reboot.



A Progress Bar appears:



Step 4. The Login Page appears. Login with the saved administration credentials.



The image shows the login page for a Cisco Wireless Access Point. The page has a blue background. In the top left corner, there is the Cisco logo (four vertical bars of increasing height) followed by the text "Wireless Access Point" and "CISCO" below it. On the right side, there are two input fields: "Username:" with the value "cisco" and "Password:" with five black dots. Below these fields is a "Log In" button. At the bottom left, there is a small copyright notice: "© 2014 Cisco Systems, Inc. All rights reserved. Cisco, the Cisco logo, and Cisco Systems are registered trademarks or trademarks of Cisco Systems, Inc. and/or its affiliates in the United States and certain other countries."