

SPA ATA: Saving Configuration for Analysis Using admin/config.xml

Your SPA112, SPA122, or SPA232D ATA is doing something that you don't understand. You ask for help and you are requested to provide the ATA's configuration. How do you capture the ATA's configuration and share in an easily readable format with a support person without sharing password credentials?

Viewing your ATA's Configuration with FireFox

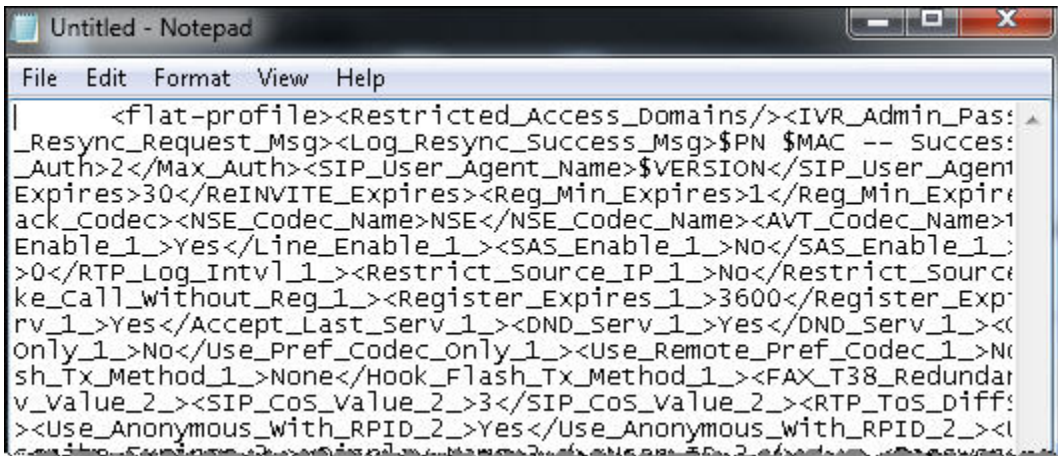
1. Use your browser to view the ATA's configuration by visiting the `http://ataIpAddress/admin/config.xml` URL.

This XML file does not appear to have any style information associated with it. The document tree is shown below.

```
- <flat-profile>
  <Restricted_Access_Domains/>
  <IVR_Admin_Passwd/>
  <Network_Startup_Delay>3</Network_Startup_Delay>
  <DNS_Query_TTL_Ignore>No</DNS_Query_TTL_Ignore>
  <Syslog_Server/>
  <Debug_Server/>
  <Debug_Level>3</Debug_Level>
  <Provision_Enable>Yes</Provision_Enable>
  <Resync_On_Reset>Yes</Resync_On_Reset>
  <Resync_Random_Delay>2</Resync_Random_Delay>
  <Resync_At_HH:mm />
  <Resync_At_Random_Delay>600</Resync_At_Random_Delay>
  <Resync_Periodic>3600</Resync_Periodic>
  <Resync_Error_Retry_Delay>3600</Resync_Error_Retry_Delay>
  <Forced_Resync_Delay>14400</Forced_Resync_Delay>
  <Resync_From_SIP>Yes</Resync_From_SIP>
```

NOTE: Refer to the <https://supportforums.cisco.com/docs/DOC-23684> document if you want to include the admin credentials in the URL

Notice the hyphen "-" on the first line? It's not part of the ATA's configuration. If you copy this output, bad formatting that you cannot see is included in the output and would look like this if pasted into a text file:

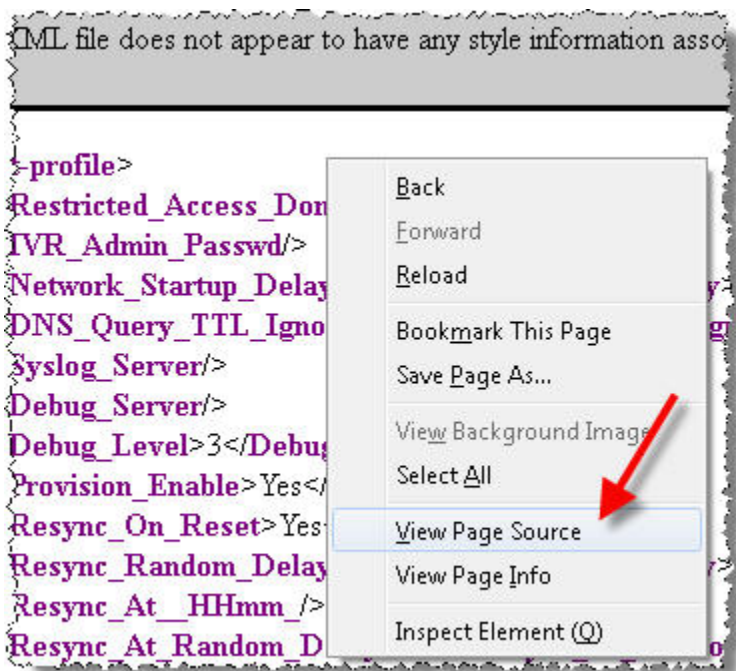


```

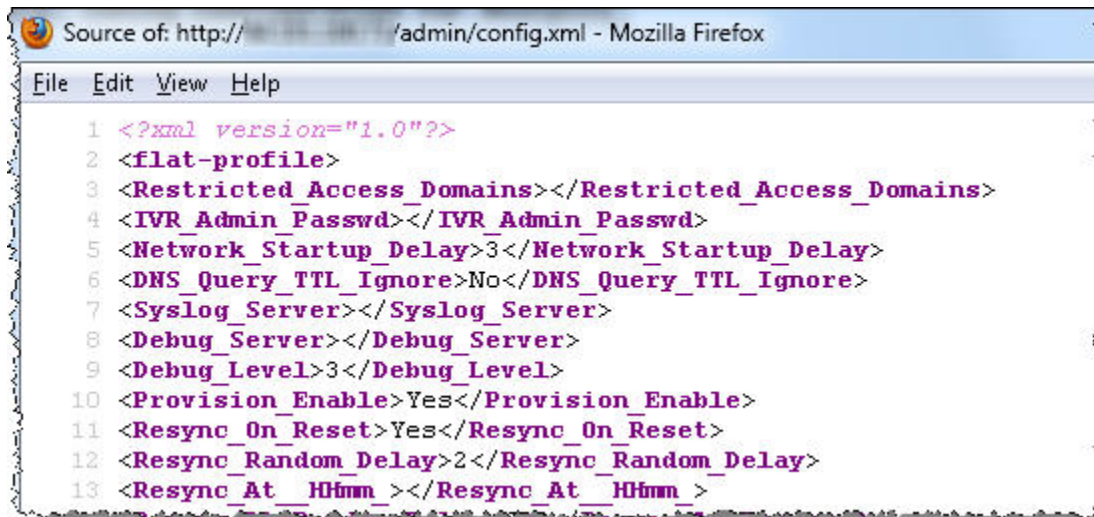
- <flat-profile><Restricted_Access_Domains/><IVR_Admin_Pas:
_Resync_Request_Msg><Log_Resync_Success_Msg>$PN $MAC -- Succes:
_Auth>2</Max_Auth><SIP_User_Agent_Name>$VERSION</SIP_User_Agent
Expires>30</ReINVITE_Expires><Reg_Min_Expires>1</Reg_Min_Expire
ack_Codec><NSE_Codec_Name>NSE</NSE_Codec_Name><AVT_Codec_Name>1
Enable_1>Yes</Line_Enable_1><SAS_Enable_1>No</SAS_Enable_1>
>0</RTP_Log_Intvl_1><Restrict_Source_IP_1>No</Restrict_Sourc
ke_Call_without_Reg_1><Register_Expires_1>3600</Register_Exp
rv_1>Yes</Accept_Last_Serv_1><DND_Serv_1>Yes</DND_Serv_1><
Only_1>No</Use_Pref_Codec_Only_1><Use_Remote_Pref_Codec_1>No
sh_Tx_Method_1>None</Hook_Flash_Tx_Method_1><FAX_T38_Redundar
v_value_2><SIP_Cos_Value_2>3</SIP_Cos_Value_2><RTP_Tos_Diff:
><Use_Anonymous_with_RPID_2>Yes</Use_Anonymous_with_RPID_2><l

```

2. Do the following in FireFox to produce easily readable configuration information, right-click and select View Page Source



The ATA's configuration is now displayed with line numbers and is easier to read



```

1 <?xml version="1.0"?>
2 <flat-profile>
3 <Restricted_Access_Domains></Restricted_Access_Domains>
4 <IVR_Admin_Passwd></IVR_Admin_Passwd>
5 <Network_Startup_Delay>3</Network_Startup_Delay>
6 <DNS_Query_TTL_Ignore>No</DNS_Query_TTL_Ignore>
7 <Syslog_Server></Syslog_Server>
8 <Debug_Server></Debug_Server>
9 <Debug_Level>3</Debug_Level>
10 <Provision_Enable>Yes</Provision_Enable>
11 <Resync_On_Reset>Yes</Resync_On_Reset>
12 <Resync_Random_Delay>2</Resync_Random_Delay>
13 <Resync_At_HHmm></Resync_At_HHmm>

```

3. Right-click to select all text and paste into an empty text file.
4. Save the file with a meaningful name such as spa122_mmddyy_hhmm.xml
5. Send the file to the requester.

Using Chrome

If using Chrome, you can use similar steps as described above for FireFox:



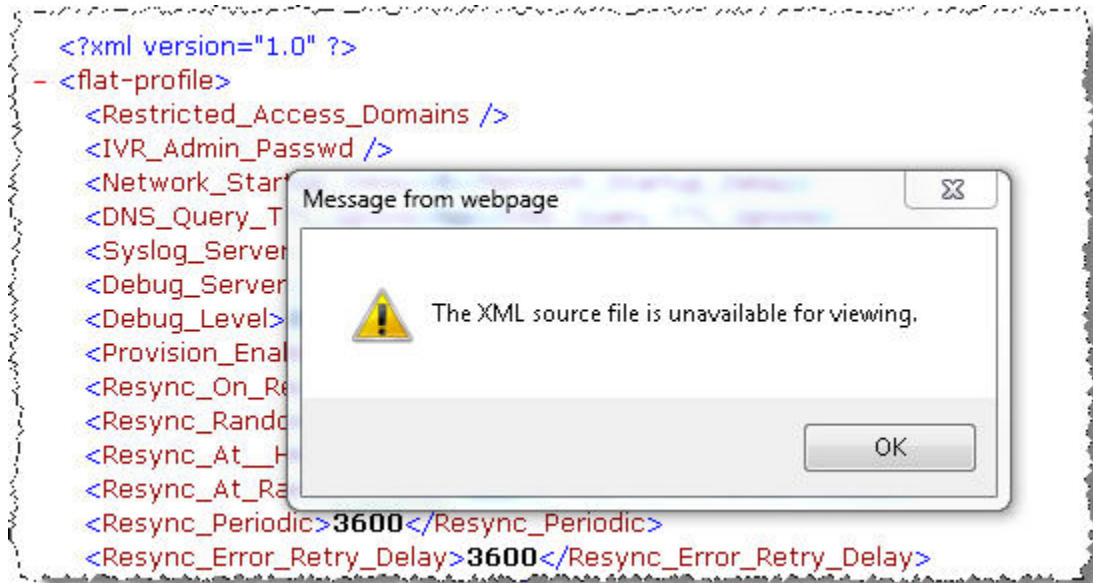
```

1 <?xml version="1.0"?>
2 <flat-profile>
3 <Restricted_Access_Domains></Restricted_Access_Domains>
4 <IVR_Admin_Passwd></IVR_Admin_Passwd>
5 <Network_Startup_Delay>3</Network_Startup_Delay>
6 <DNS_Query_TTL_Ignore>No</DNS_Query_TTL_Ignore>
7 <Syslog_Server></Syslog_Server>
8 <Debug_Server></Debug_Server>
9 <Debug_Level>3</Debug_Level>
10 <Provision_Enable>Yes</Provision_Enable>
11 <Resync_On_Reset>Yes</Resync_On_Reset>
12 <Resync_Random_Delay>2</Resync_Random_Delay>
13 <Resync_At_HHmm></Resync_At_HHmm>
14 <Resync_At_Random_Delay>600</Resync_At_Random_Delay>
15 <Resync_Periodic>3600</Resync_Periodic>
16 <Resync_Error_Retry_Delay>3600</Resync_Error_Retry_Delay>
17 <Forced_Resync_Delay>14400</Forced_Resync_Delay>

```

Using Internet Explorer

Internet Explorer produces the following message if you attempt to use right-click to view the source



<end>