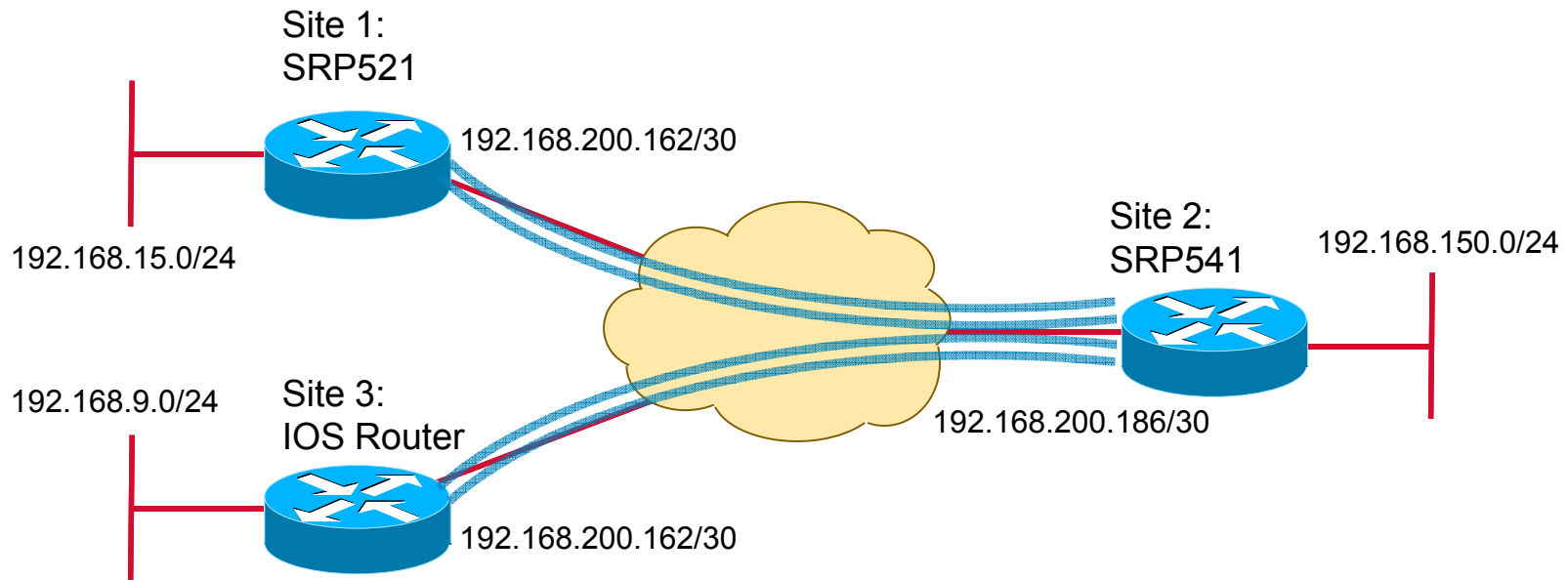




SRP500 Configuration Guide: GRE Tunnels

Guide Topology



Code Used:
SRP521: 1.1.19(004)
SRP541: 1.2.0(023)
IOS: 15.1(1)T

SRP to SRP Tunnel

SRP521 Config

GRE Tunnel

GRE IP Tunnel

Tunnel Number: 1

Tunnel Name: to541

Enable:

Checksum: None

Sequence: None

Key: None

Key Value: 0 (0 - 4294967295)

Wan Interface Name: WAN1

Destination IP or HostName: 192.168.200.186

Remote IP Address/Subnet Mask: 192.168.150.0/24

Modify Remote IP Address/Subnet Mask: /

Add Delete

Submit Cancel

SRP541 Config

GRE Tunnel

GRE IP Tunnel

Tunnel Number: 1

Tunnel Name: to521

Enable:

Checksum: None

Sequence: None

Key: None

Key Value: 0 (0 - 4294967295)

Wan Interface Name: System Default Route

Destination IP or HostName: 192.168.200.162

Remote IP Address/Subnet Mask: 192.168.15.0/24

Modify Remote IP Address/Subnet Mask: /

Add Delete

Submit Cancel

SRP to SRP Verification

Check that remote subnets appear in routing tables (Status > Routing Table).

SRP521 Routing Table

Routing Table			
Routing Table			
Destination LAN IP	Subnet Mask	Gateway	Interface
192.168.200.160	255.255.255.252	--	WAN1
192.168.100.0	255.255.255.0	--	VLAN100
192.168.150.0	255.255.255.0	--	tunnel_01
192.168.15.0	255.255.255.0	--	VLAN1
0.0.0.0	0.0.0.0	192.168.200.161	WAN1

Remote subnet available in routing table

SRP541 Routing Table

Routing Table			
Routing Table			
Destination LAN IP	Subnet Mask	Gateway	Interface
192.168.200.184	255.255.255.252	--	WAN1
192.168.100.0	255.255.255.0	--	VLAN100
192.168.150.0	255.255.255.0	--	VLAN1
192.168.15.0	255.255.255.0	--	tunnel_01
192.168.30.0	255.255.255.0	--	tunnel_02
0.0.0.0	0.0.0.0	192.168.200.185	WAN1

SRP to IOS Tunnel

IOS Config

```
interface Tunnel0
ip unnumbered FastEthernet0/1
tunnel source FastEthernet0/1
tunnel destination 192.168.200.186
!
interface FastEthernet0/1
ip address dhcp
duplex auto
speed auto
!
ip route 192.168.150.0 255.255.255.0 Tu0
!
```

SRP541 Config

The screenshot shows the 'GRE Tunnel' configuration window. The 'GRE IP Tunnel' section is active. The 'Tunnel Number' is set to 2, 'Tunnel Name' is 'to2435', and 'Enable' is checked. 'Checksum', 'Sequence', and 'Key' are all set to 'None'. The 'Key Value' is 0, with a range of (0 - 4294967295) shown. The 'Wan Interface Name' is 'System Default Route'. The 'Destination IP or HostName' is 192.168.200.166. The 'Remote IP Address/Subnet Mask' is 192.168.30.0/24. There are 'Add' and 'Delete' buttons below the list. At the bottom of the window are 'Submit' and 'Cancel' buttons.

Field	Value
Tunnel Number	2
Tunnel Name	to2435
Enable	<input checked="" type="checkbox"/>
Checksum	None
Sequence	None
Key	None
Key Value	0 (0 - 4294967295)
Wan Interface Name	System Default Route
Destination IP or HostName	192.168.200.166
Remote IP Address/Subnet Mask	192.168.30.0/24

SRP to IOS Verification

```
Router#sh int tunnel 0
Tunnel0 is up, line protocol is up
Hardware is Tunnel
Interface is unnumbered. Using address of FastEthernet0/1
(192.168.200.166)
MTU 17916 bytes, BW 100 Kbit/sec, DLY 50000 usec,
reliability 255/255, txload 1/255, rxload 1/255
Encapsulation TUNNEL, loopback not set
Keepalive not set
Tunnel source 192.168.200.166 (FastEthernet0/1), destination
192.168.200.186
...
Tunnel protocol/transport GRE/IP
Key disabled, sequencing disabled
Checksumming of packets disabled
Tunnel TTL 255, Fast tunneling enabled
Tunnel transport MTU 1476 bytes
...
Router#
Router#sh ip route
Gateway of last resort is 192.168.200.165 to network 0.0.0.0

S* 0.0.0.0/0 [254/0] via 192.168.200.165
192.168.30.0/24 is variably subnetted, 2 subnets, 2 masks
C 192.168.30.0/24 is directly connected, FastEthernet0/0
L 192.168.30.1/32 is directly connected, FastEthernet0/0
S 192.168.150.0/24 is directly connected, Tunnel0
192.168.200.0/24 is variably subnetted, 2 subnets, 2 masks
C 192.168.200.164/30 is directly connected, FastEthernet0/1
L 192.168.200.166/32 is directly connected, FastEthernet0/1
Router#
```

SRP541 Routing Table

Routing Table			
Destination LAN IP	Subnet Mask	Gateway	Interface
192.168.200.184	255.255.255.252	--	WAN1
192.168.100.0	255.255.255.0	--	VLAN100
192.168.150.0	255.255.255.0	--	VLAN1
192.168.15.0	255.255.255.0	--	tunnel_01
192.168.30.0	255.255.255.0	--	tunnel_02
0.0.0.0	0.0.0.0	192.168.200.185	WAN1

Remote subnet
available in
routing table

