
How to Fix SRW Switch Issues With MS IE 6 Browser Windows 2000 and XP

While managing SRW switch by Microsoft IE browser if page is not displayed completely as shown in Figure 1 then take the following steps to correct it.

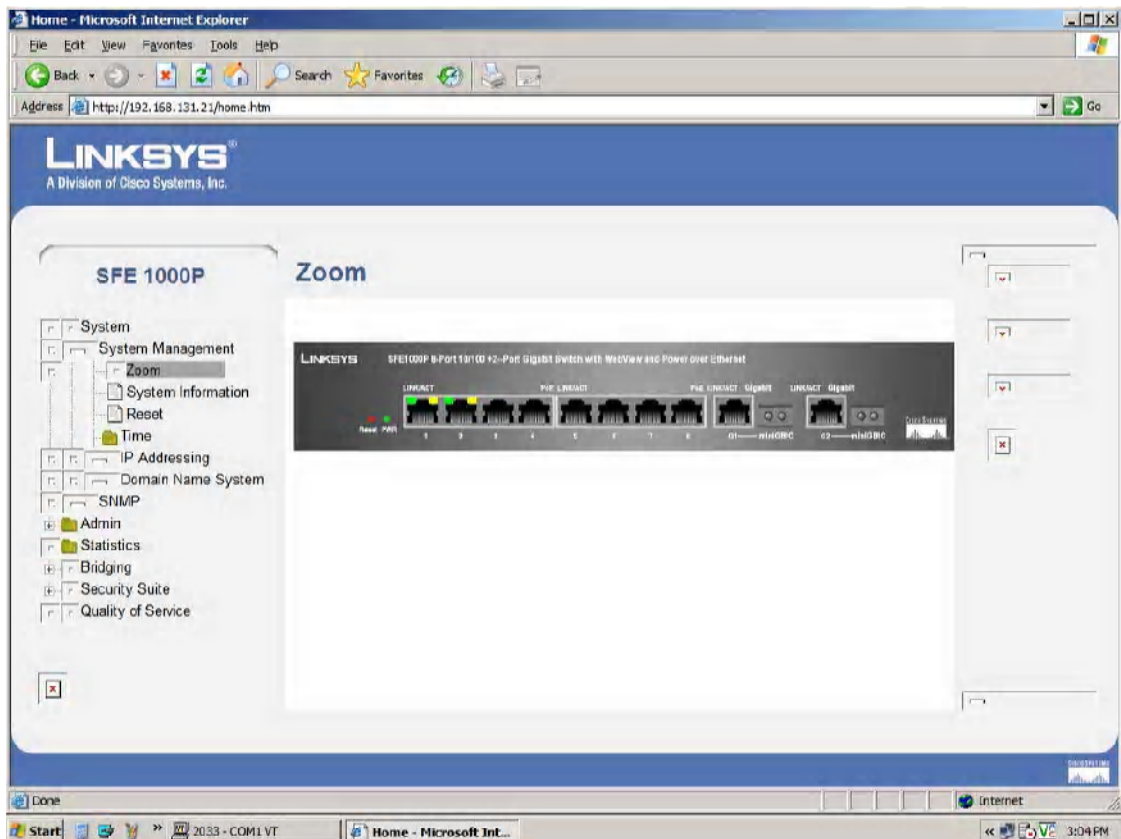


Figure 1: Accessing the switch from a PC via IE browser.

1. Run "regedit" and locate

"MaxConnectionsPer1_0Server" **and/or** "MaxConnectionsPerServer"

HKEY_CURRENT_USER\Software\Microsoft\Windows\CurrentVersion\Internet Settings

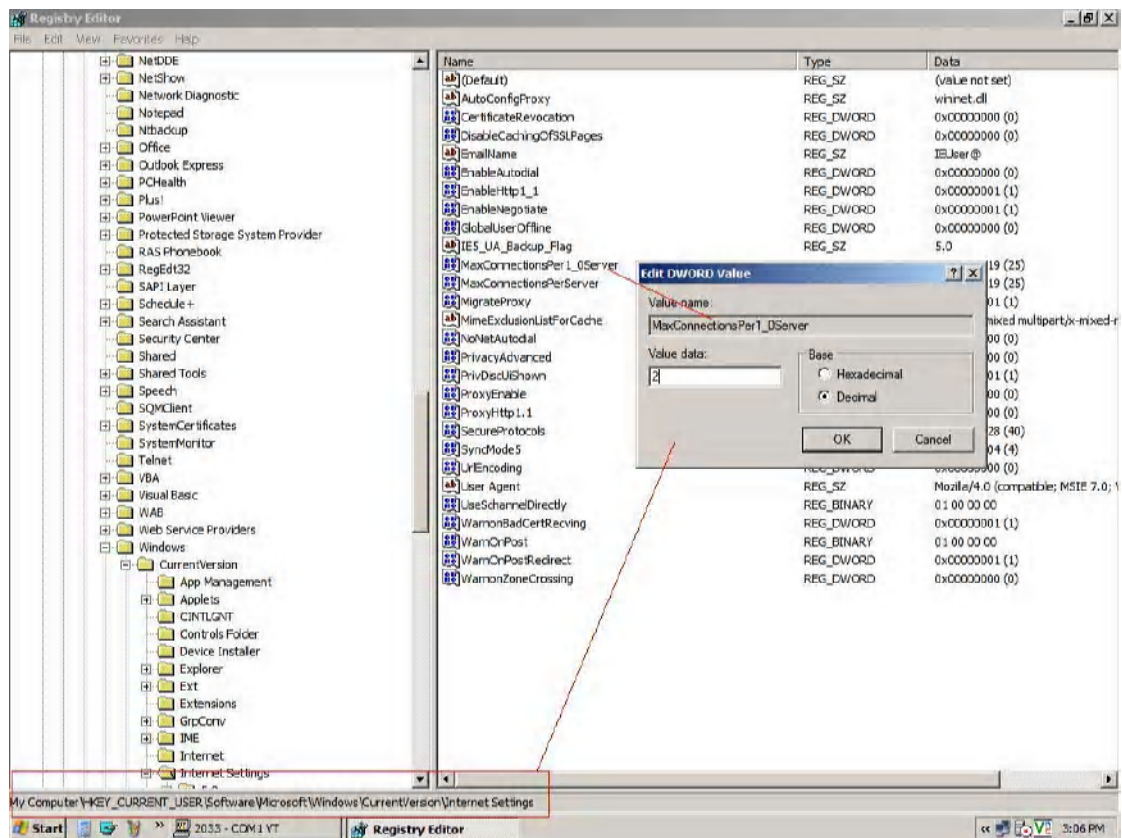


Figure 2: Locating "MaxConnectionsPer1_0Server" **and/or** "MaxConnectionsPerServer"

2. Modify current set DWORD value back to default value of 2

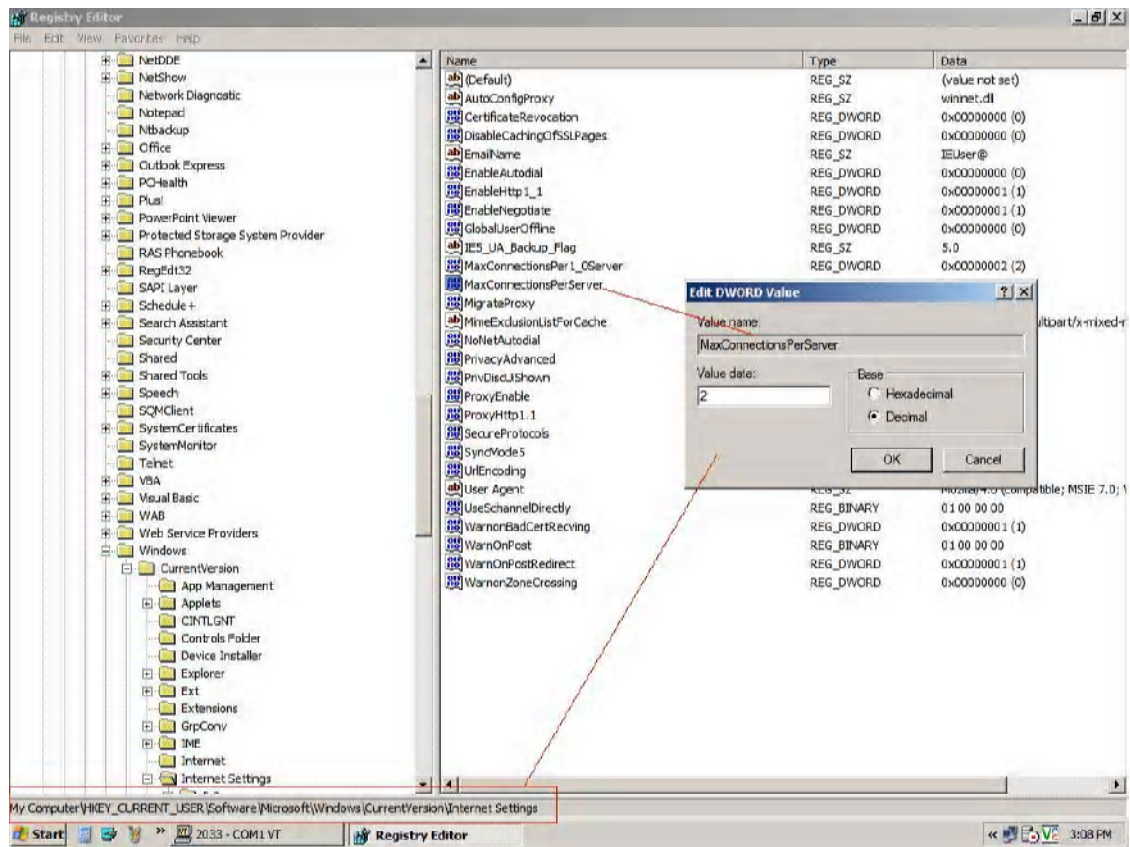


Figure 3: Modify DWORD values

3. Access the switch again. Will notice the problem is fixed.

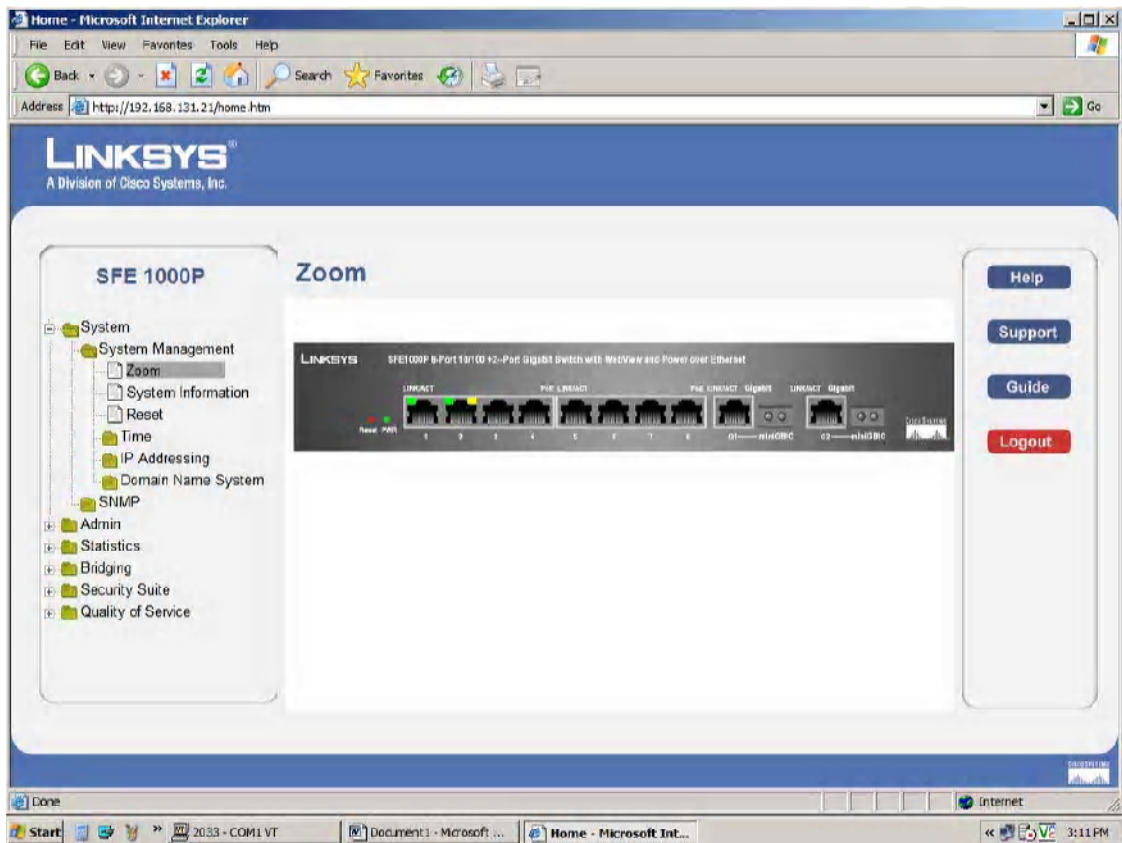


Figure 4: Final result

Property of Linksys COBO QA
Version 1.0 April 23rd 2007
Authored by Razmik Mampourian
