

## LAB 7B: Wireless

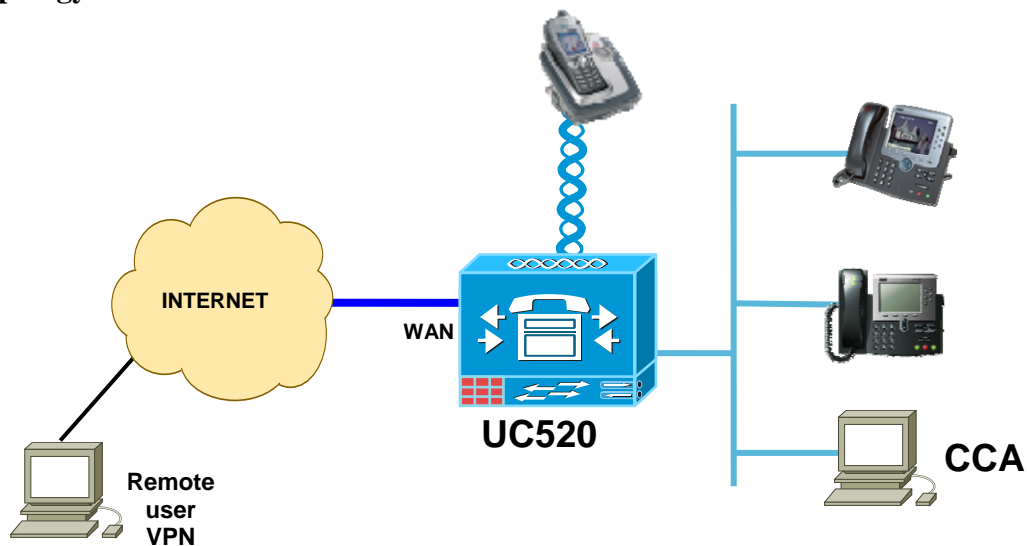
### Introduction:

UC520 is part of the SBCS (Smart Business Communications System) family of products. It has integrated Wi-Fi in 8U and 16U models. This integrated Access Point can be used for connecting wireless IP Phones such as Cisco 7920G, Cisco 7921G, Nokia E61i, Nokia E65i, etc.

### Objective:

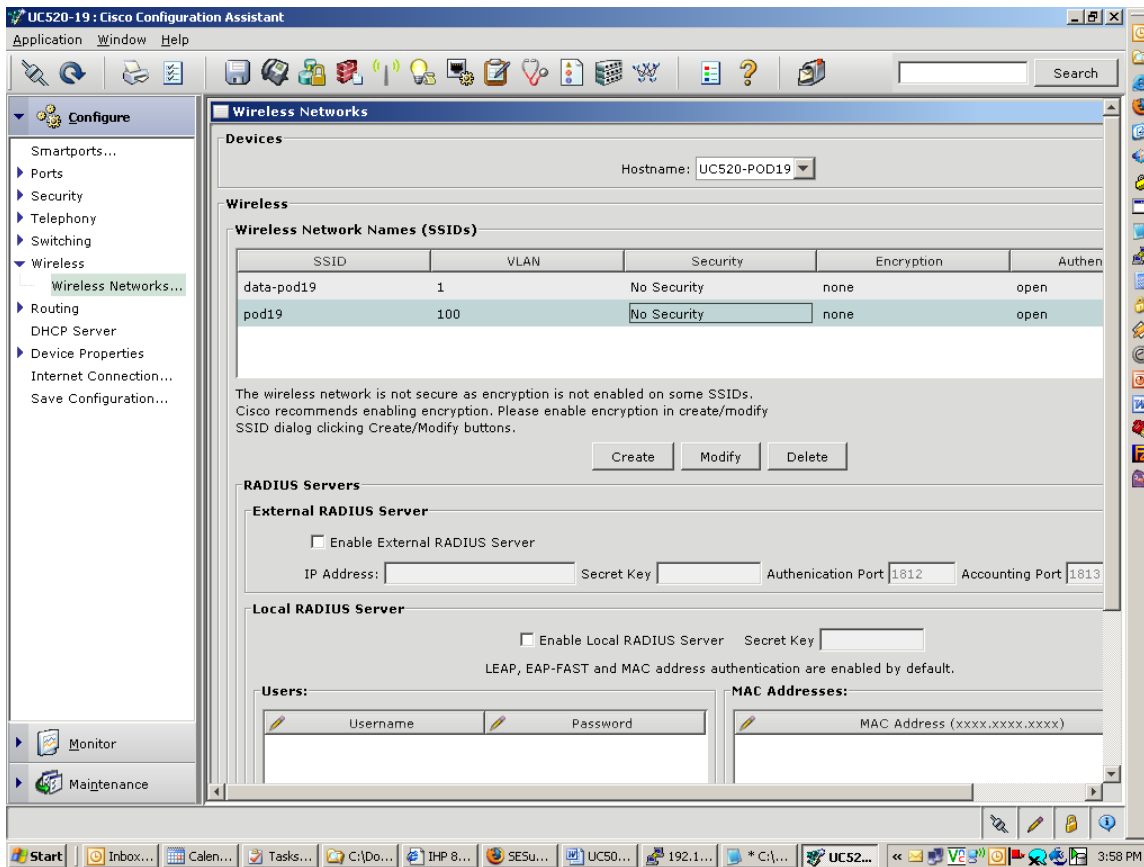
The main objective of this lab is to configure the basic Wireless features. These features will be configured using Cisco Configuration Assistant (CCA). At the end of this lab, a user should be able to configure a WiFi IP phone to work with UC520.

### Topology:

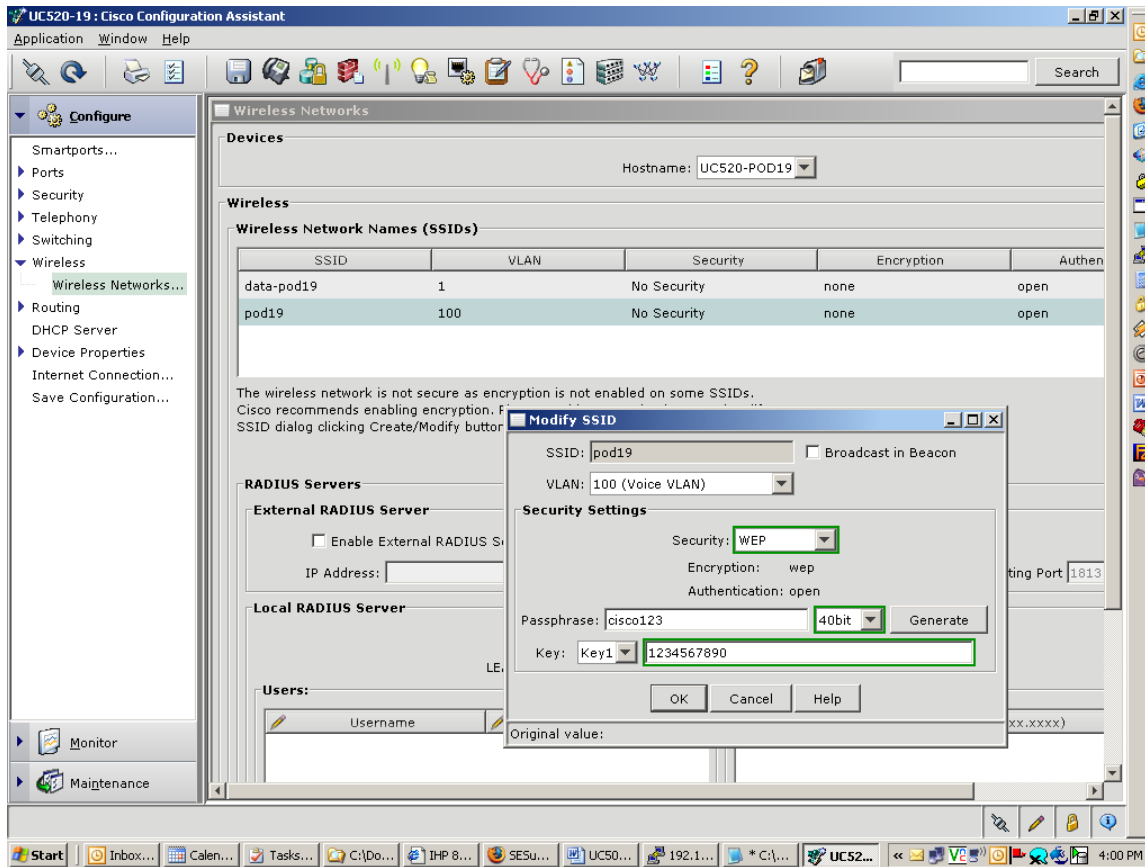


This lab will configure the basic Wireless features on the UC500 will show how to configure a 7921G IP Phone with SSID podxx (where xx is your pod #).

a) In CCA, click on Wireless -> Wireless Networks



1. Click on the “UC520-Voice” entry and delete it.  
Click on “Create” to add a new entry. Make the SSID “podxx” (xx is your POD #). This will be the same SSID used to configure the 7921.
2. Go ahead and enable WEP on the UC520 for the voice SSID – click on podxx and hit modify.  
Select the below:  
Security -> **WEP**  
Passphrase -> “**cisco123**” - select “**40 Bit**” from the dropdown menu.
3. Click on “Generate”. Make note of the generated SSID, as this will be required to configure the 7921 phone.
4. Click on the “UC520-Data” SSID and delete it.
5. Click on “Create” and add an SSID of “podxx-data” on Vlan 1. Ignore the security error warning messages for the lab.
6. Click on “OK” to download the updated configuration to UC520.



- c) Go to the 7921 phone & click on the “down” arrow to enter “settings”
- d) Select Network Profiles and hit “\*\*#” to Unlock the config
- e) Add a new profile & hit Change
- f) Add a profile name - call it UC520-xx (xx is your POD #)
- g) Go to WLAN configuration:
  - add SSID -> podxx
  - Security Mode -> Open+WEP
  - Key Style -> HEX
  - Static WEP Key 1 (40 Bits) – enter the WEP that was generated above using the key pad
- h) Hit Options & Save and go back to the Main Screen
- i) You should see the 7921 register to the UC520 with an auto assigned extension.

You can test calls to/from the wireless phone to verify correct operation.

**NOTE: When both you have completed this lab, please reset UC500 and CUE to factory default setting using the procedure in [Appendix A](#)!**