

# APPENDIX C: PPPoE on the WAN

## Introduction:

PPPoE on the WAN interface of UC500 is also a connection option. One example of this WAN deployment would be to connect the WAN interface through ethernet to a DSL modem to a Service Provider. In this case the PPPoE would be running on the UC500 instead of the DSL modem

## Objective:

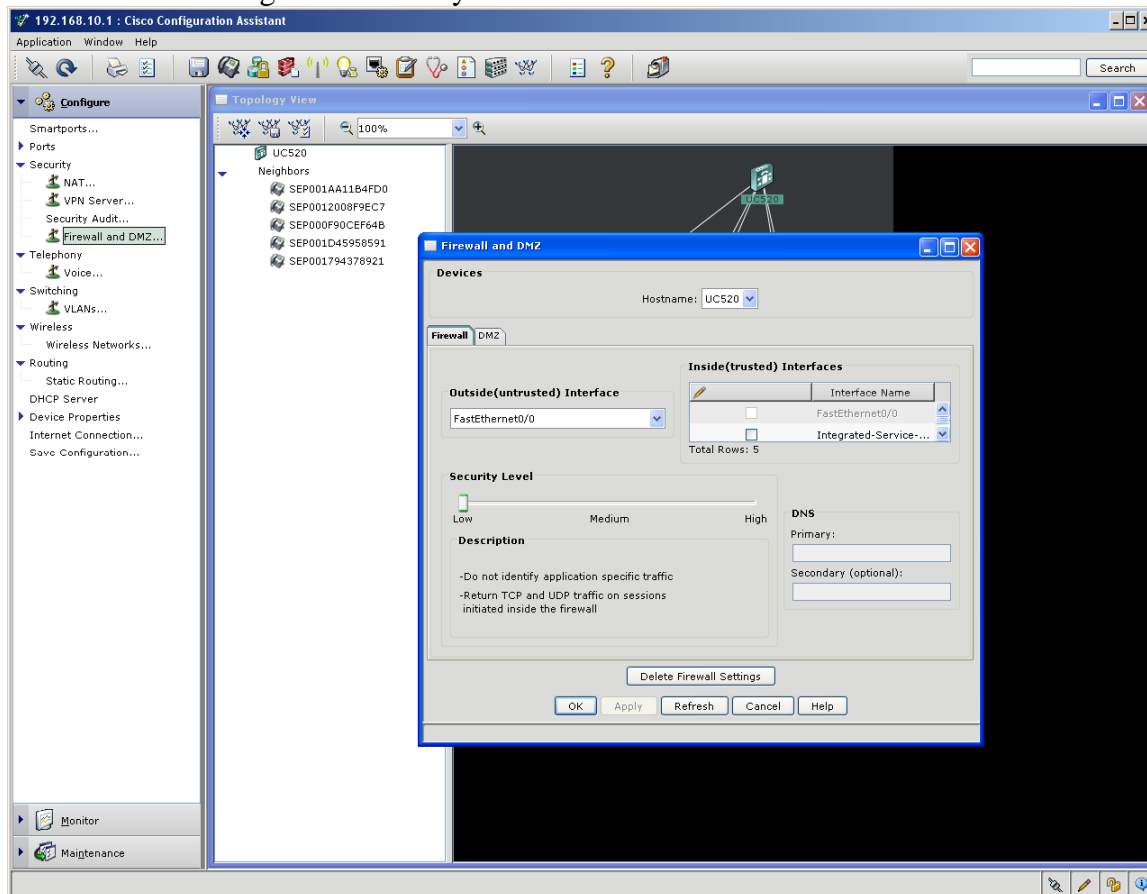
Configure PPPoE on the WAN interface using CCA. Understand the pre-requisite steps needed to enable PPPoE on the WAN interface

## Lab Set-up:

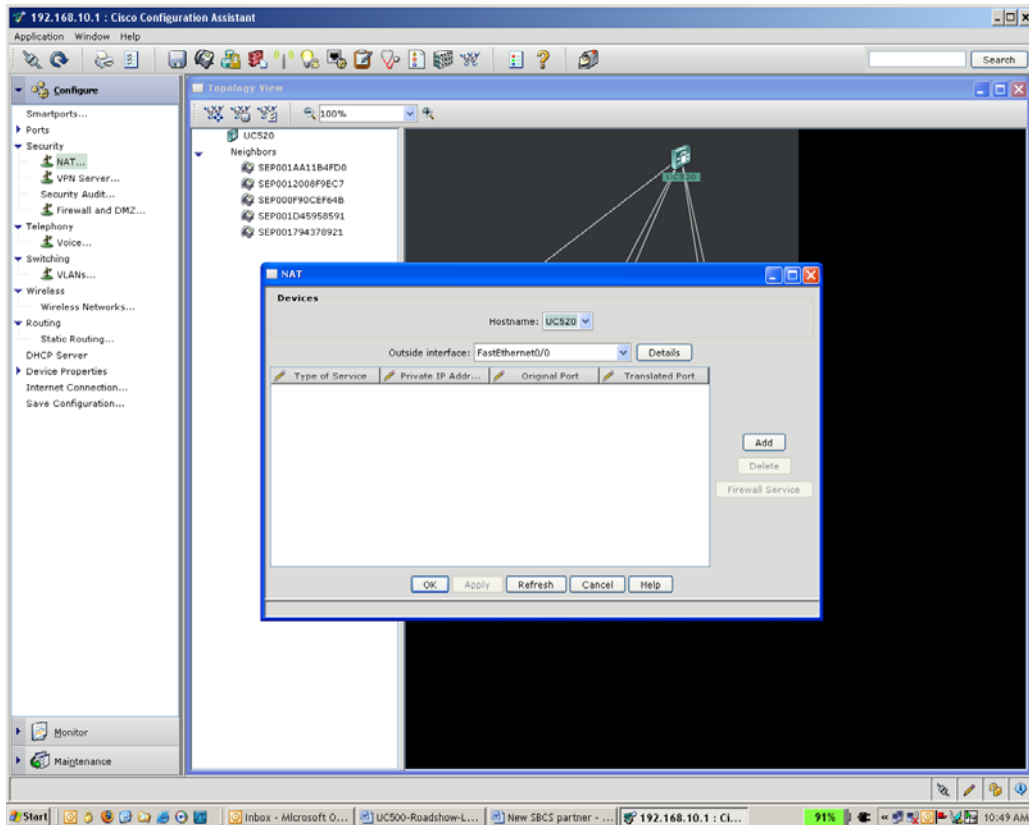
Refer to the main diagram

## Setup Steps:

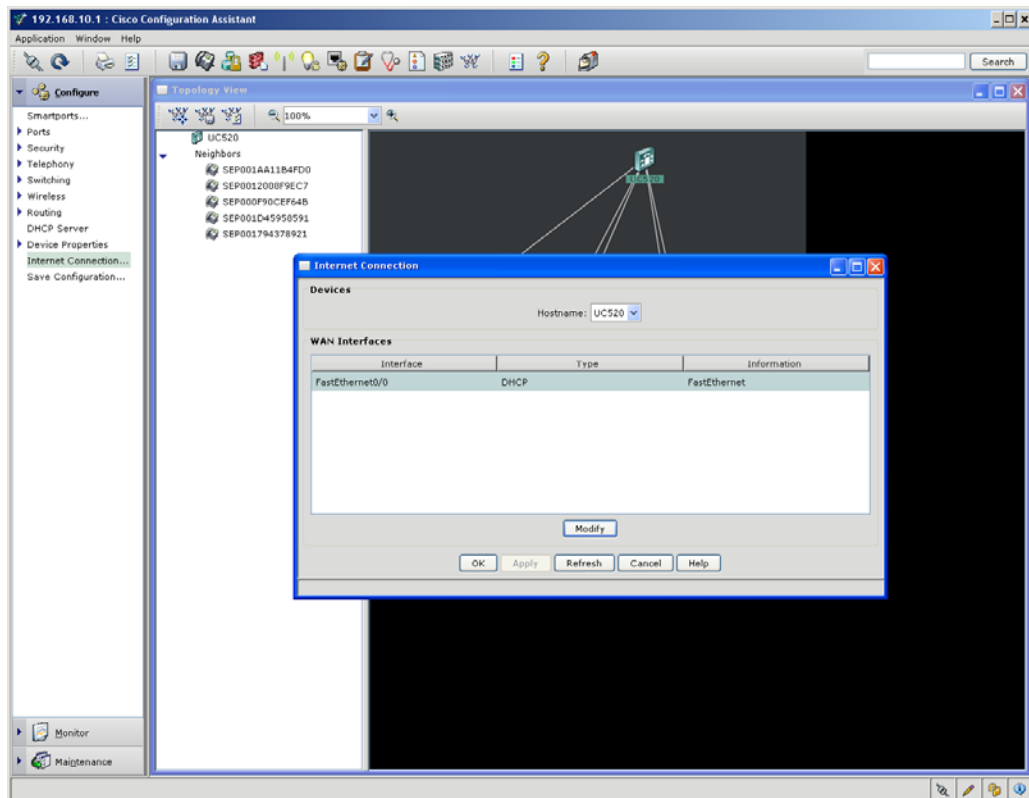
1. Launch CCA, enter the username and password (cisco/cisco) and let it discover the network and connected devices.
1. Check the topology to ensure all the connected phones are showing up.
2. Click on “Configure -> Security -> Firewall and DMZ”



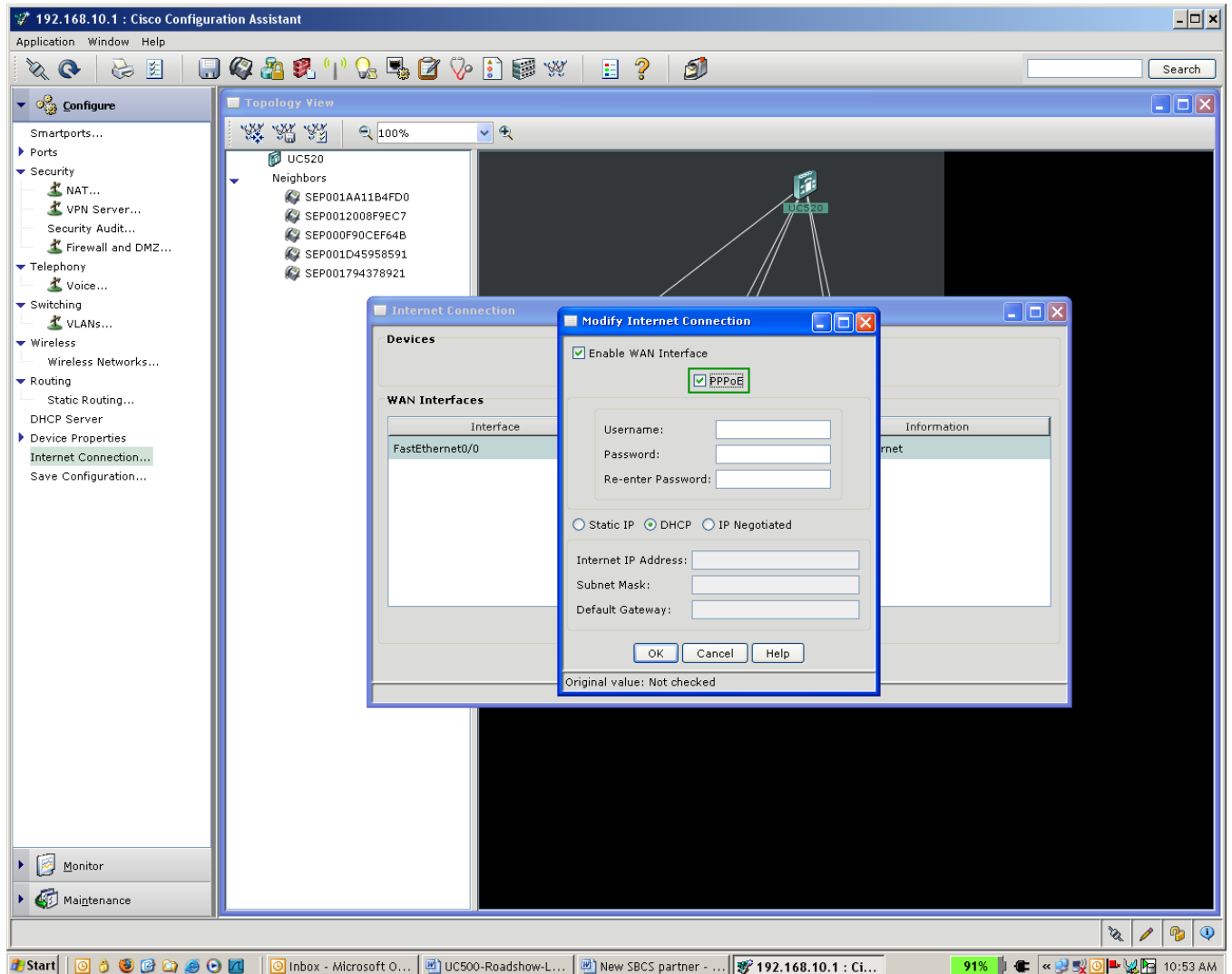
3. Click on “Delete Firewall Settings”. Click “yes” when prompted. Click OK
4. Click on “Configure -> Security -> NAT”



5. On the “Outside Interface” pull down menu select “Delete Interface”. Click Apply and then OK
6. Click on “Configure -> Internet Connection”
7. Select “WAN Interface FastEthernet 0/0”



8. Click on the “Modify”



9. Check PPPoE button, enter username, password and select IP Negotiated/DHCP. Click OK
10. Click "Apply" and then OK on the Internet Connection screen
11. Click on "Configure -> Security -> NAT"
12. Click Yes when prompted to Delete Partial configuration.
13. Select Dialer0/FastEthernet0/0 as the outside Interface and click Apply and then OK
14. Click on "Configure -> Security -> Firewall and DMZ"
15. Configure FW as per Lab 4. The outside interface would be "Dialer0/FastEthernet0/0"

### Verify Steps:

1. Telnet into the UC500 from the connected computer
2. Check if the Dialer0 interface is UP/UP using "show ip interface brief"