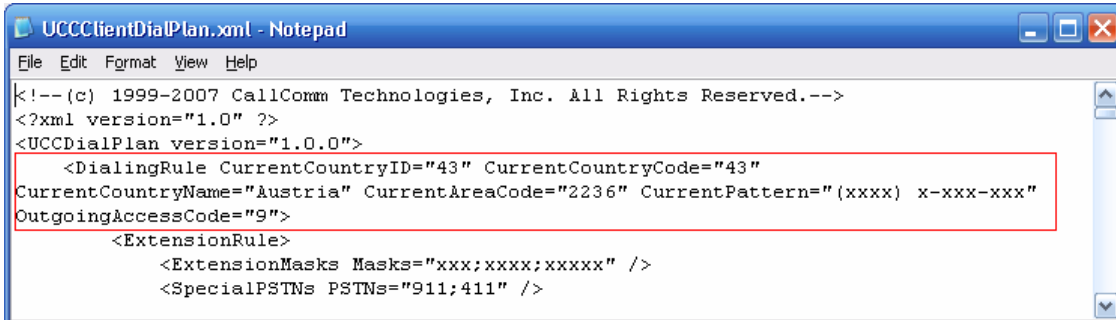


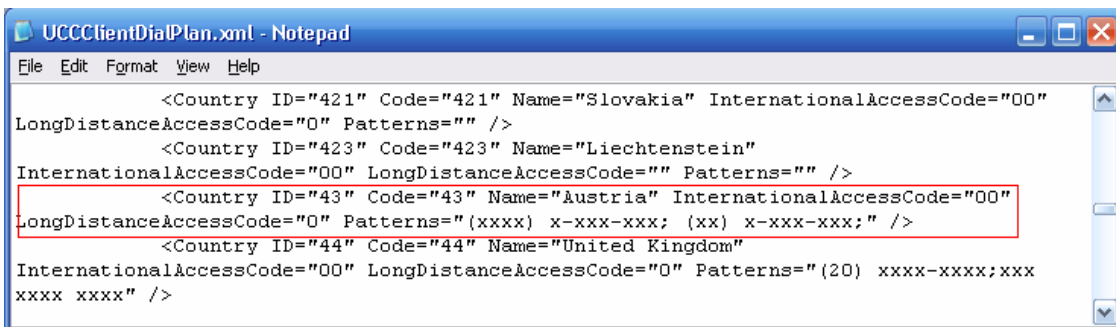
How to Set up DialPlan for Austria

1. Open UCCClientDialPlan.xml from C:\WINDOWS\system32\
2. Enter the Country ID="43", CountryCode="43", CountryName="Austria", AreaCode="YourAreaCode", CurrentPattern="YourPhonenumber"



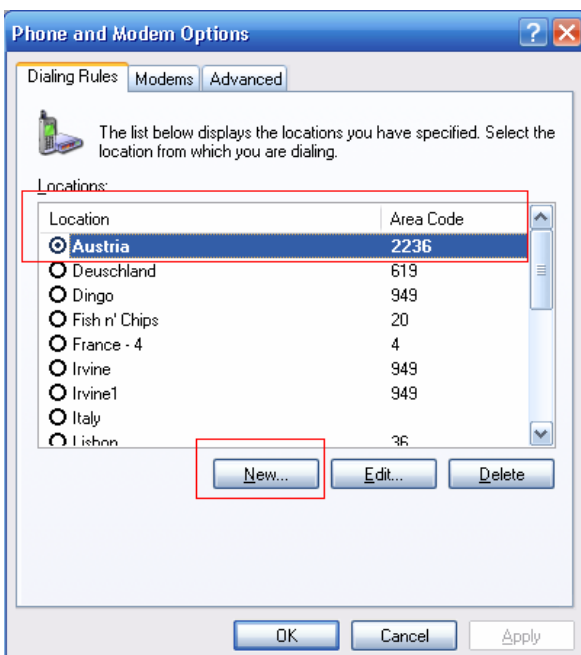
```
UCCClientDialPlan.xml - Notepad
File Edit Format View Help
<!-- (c) 1999-2007 CallComm Technologies, Inc. All Rights Reserved.-->
<?xml version="1.0" ?>
<UCCDialPlan version="1.0.0">
  <DialingRule CurrentCountryID="43" CurrentCountryCode="43"
  CurrentCountryName="Austria" CurrentAreaCode="2236" CurrentPattern="(xxxx) x-xxx-xxx"
  OutgoingAccessCode="9">
    <ExtensionRule>
      <ExtensionMasks Masks="xxx;xxxx;xxxxx" />
      <SpecialPSTNs PSTNs="911;411" />
    </ExtensionRule>
  </DialingRule>
</UCCDialPlan>
```

3. On line 43, Enter Patterns="Yourphonenumber". You can add another pattern from different cities separating by comma such as Vienna where has area code (xx) x-xxx-xxxx.



```
UCCClientDialPlan.xml - Notepad
File Edit Format View Help
  <Country ID="421" Code="421" Name="Slovakia" InternationalAccessCode="00"
  LongDistanceAccessCode="0" Patterns="" />
  <Country ID="423" Code="423" Name="Liechtenstein"
  InternationalAccessCode="00" LongDistanceAccessCode="" Patterns="" />
  <Country ID="43" Code="43" Name="Austria" InternationalAccessCode="00"
  LongDistanceAccessCode="0" Patterns="(xxxx) x-xxx-xxx; (xx) x-xxx-xxx;" />
  <Country ID="44" Code="44" Name="United Kingdom"
  InternationalAccessCode="00" LongDistanceAccessCode="0" Patterns="(20) xxxx-xxxx;xxx
  xxxx xxxx" />
```

4. Open Popup Click on Windows Dialing Rules



5. Enter your location name, your area code, Outside line for local calls and Outgoing Access Code (these two outgoing access code are setup on router CME)

New Location

General | Area Code Rules | Calling Card

Location name: Austria

Specify the location from which you will be dialing.

Country/region: Austria | Area code: 2236

Dialing rules

When dialing from this location, use the following rules:

To access an outside line for local calls, dial: 9

To access an outside line for long-distance calls, dial: 9

Use this carrier code to make long-distance calls: []

Use this carrier code to make international calls: []

To disable call waiting, dial: []

Dial using: Tone Pulse

OK Cancel Apply

6. Click Apply and restart Popup
7. You can add another pattern from different cities from Popup
8. Extension Masks = your extension on your router such as 3,4,5 digits extension

Cisco Unified CallConnector

Server | Options | Contact | Dial Plan | Email Setting

Current Location Setting

Location Name: Austria

Country Code: 43

Local Area Code: 2236

Location Pattern: [(xxxx) x-xxx-xxxx]

Windows Dialing Rules Reload

CME Configuration

Extension Masks: xxx;xxxx;xxxxxx

Special PSTNs: 911;411

Number Patterns

Country: Austria

Patterns: [(xxxx) x-xxx-xxxx]

Add [(xxxx) x-xxx-xxxx] [(xx) x-xxx-xxxx]

Close Option Apply Exit Popup