

# Cisco Smart Business Communications System Release 1.3



# Smart Business Communication Systems 1.3

## Simple, Complete, Secure Communications for Small Businesses

Unified Communications



IP Phones



Switching



Wireless



WAN Security / Teleworker



Unified 500 Series

- 8 to 64 Voice Users
- Desktop & Rackmount Models
- Optional Integrated WLAN AP on desktop models

7900 & 500 Series

- All Cisco Unified IP Phones are supported including new Cisco 500 Series phones now with optional switch port on phone

CE520 Series

- 8 port desktop and 24 port rack mount models
- Companion Switch for UC500

AP500  
WLC 500

- Autonomous APs or Unified Wireless Solution with Mobility Express

Cisco SR520

- VPN, Wired and Wireless Access, Remote IP Phone extension

Business & Productivity Applications

Cisco Smart Assist Features  
Cisco Configuration Assistant  
Cisco Monitor Director



# SBCS 1.3 Update Overview

## What's New in Release 1.3

- **New Cisco SR520 Security Router**
- **Cisco UC500 expansion up to 64 Users with License Upgrades**
- **Expanded list of Cisco Unified IP Phone support including newly added options for switch port on the back of Cisco 500 Series Phones**
- **Cisco Configuration Assistant v1.8**
- **Mobility Express Update – Now up to 10 Autonomous APs in SBCS**

# Introducing the Cisco SR520

New

- The Cisco SR520 Series is a line of secure routers to compliment and support the Cisco Smart Business Communications System
- Targeted to work with the Cisco Smart Business Communications System platforms as well as Teleworker deployments, the Cisco SR520 Series provides a combination of Security and WAN features:
  - Secure VPN access for corporate employee and partner productivity
  - Threat defense including Firewall, IPS, URL Filtering services
  - Dynamic routing features including QoS and advanced router protocols
  - Options for integrated DSL modems
- Supported by the same management system and tools as other Cisco Smart Business Communication System platforms



# Cisco Unified Communications 500 Series Updates



## New 64 user software upgrade

- License-based upgrades make growth easy
- Scales up from 48U solution using an additional Catalyst Express 520 Series 24-port switch
- 64U upgrade only works with 48U UC500 models
- No direct upgrade path for 24U => 64U or 32U => 64U
- Installed on UC500 48U box via CCA 1.8 and above



## SW licensing upgrades to add users

Available Today:

SL-UC520-16UPG= (from 8-16 users)

SL-UC520-32UPG= (from 24-32 users)

SL-UC520-48UPG= (from 32-48 users)

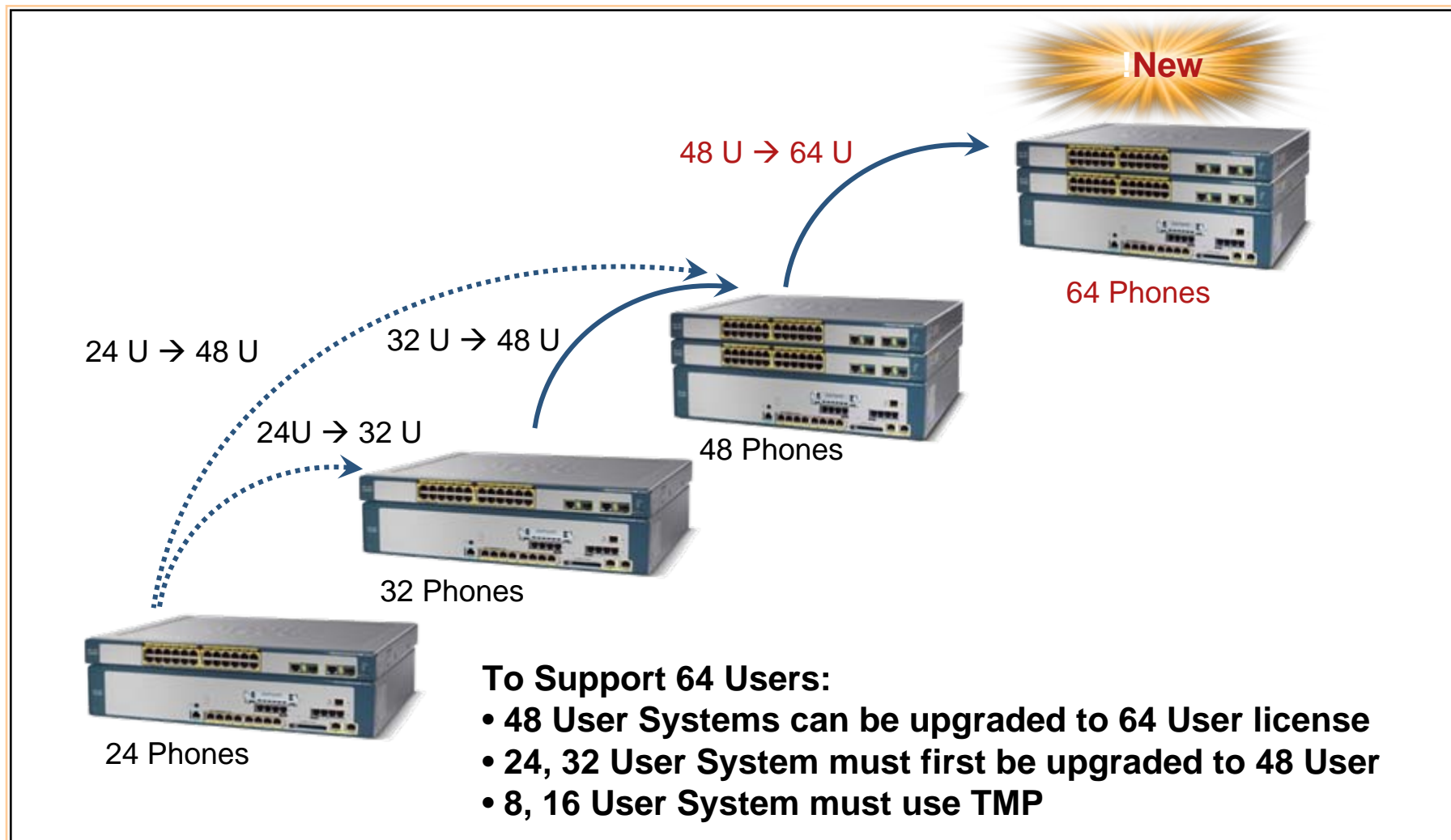
SL-UC520-24-48UPG= (from 24-48 users)

Available in September 2008:

SL-UC520-64UPG= (from 48-64 users)

**-All software upgrades will be supported with UC500 Software Pack 4.2.9**

# Cisco UC500 64 User License Upgrade



# Vmail on Cisco UC500 - Cisco Unity Express 3.2.1

- CCA upgrade to UC500 software pack 4.2.9 will upgrade to CUE release 3.2.1
- CUE 3.2.1 offers the following end user features:
  - Nonsubscriber Recipients in Distribution Lists
  - Integrated Messaging Support for Apple Macintosh Users
  - PINless Login to Voice-Mail
- CUE 3.2.1 offers the following system features:

The following new languages are supported in Cisco Unity Express 3.2.1:

- Arabic
- Russian
- Turkish

For more details, please refer to the CUE 3.2.1 Release Notes:

[http://www.cisco.com/en/US/docs/voice\\_ip\\_comm/unity\\_exp/rel3\\_2/release/notes/rncue32.html](http://www.cisco.com/en/US/docs/voice_ip_comm/unity_exp/rel3_2/release/notes/rncue32.html)

# Cisco Unified IP Phone 500 Series

Now with 10/100  
ports for PCs



New affordable, entry-level Cisco IP Phones for SBCS Deployments that only need KTS and low-end PBX features (such as shared line, intercom, speakerphone, paging, park)

Purpose-built for use with Cisco's UC500 Series

Four models

CP-521G= (1-line)

CP-524G= (4-line)

\***CP-521SG**= (1-line with PC switch port)

\***CP-524SG**= (4-line with PC switch port)

LCD Display

G.711/G.729 Codec Support

Single 10/100 PoE port (802.3af)

Optional power supplies and wallmount kit

Supported only on SBCS/UC500 (via unique SPCP protocol)

\*Requires CCA 1.8 and above



# Cisco Configuration Assistant 1.8

## System Level Feature Enhancements

- Support for SR520 secure router
- 64 user license upgrade for UC 500 48U platform

## Security (with SR520 only)

- Advanced (Zone-based) firewall
- SSL VPN
- Non split-tunnel and split tunnel VPN modes

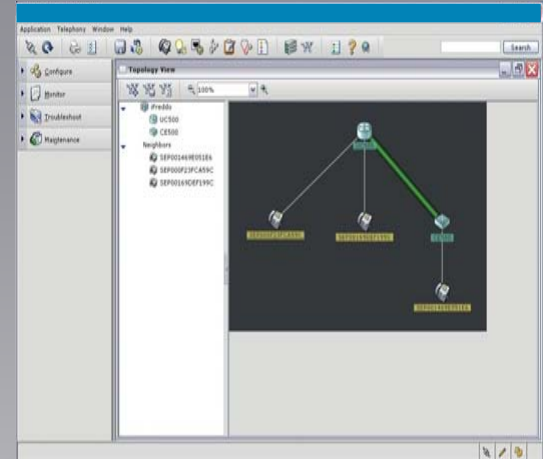
## Voice Feature Enhancements

- Support for 7937, 7915, 7916 (Early Adopter)
- Support for 521SG, 524SG phones
- Button labels

## Wireless Feature Enhancements

- Support for 10 autonomous Access Points

**Simplifies the Task of Configuring, Deploying,  
and Administering SBCS Solutions**



**For compatible Software &  
Releases for SBCS platforms  
please see below:  
[supportwiki.cisco.com/sbcs](http://supportwiki.cisco.com/sbcs)**

**[www.cisco.com/go/configassist](http://www.cisco.com/go/configassist)**

# Cisco Wireless Mobility Express Updates

- **Increases AP 521 Scalability**

- **Up to 10 Autonomous APs (up from three)\***

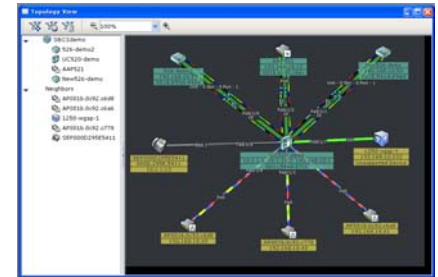
\*Enhancements enabled by CCA 1.8

- **DHCP proxy support\*\***

- **Guest VLAN security\*\***

- **Up to 12 APs per WLAN Controller (WLC526)\*\***

**\*\*Enhancements coming in upcoming WLC SW Update targeted for Oct 08**



# Q&A / More Information

**Cisco.com:**

<http://www.cisco.com/go/sbcs>

**Partner Central:**

<http://www.cisco.com/web/partners/sell/smb/products/sbcs.html>

**Cisco SBCS Support Wiki:**

<http://supportwiki.cisco.com/sbcs>



**SBCS Supportwiki:**  
[supportwiki.cisco.com/sbcs](http://supportwiki.cisco.com/sbcs)

