

APPENDIX B: Verifying VoiceViewExpress & IMAP

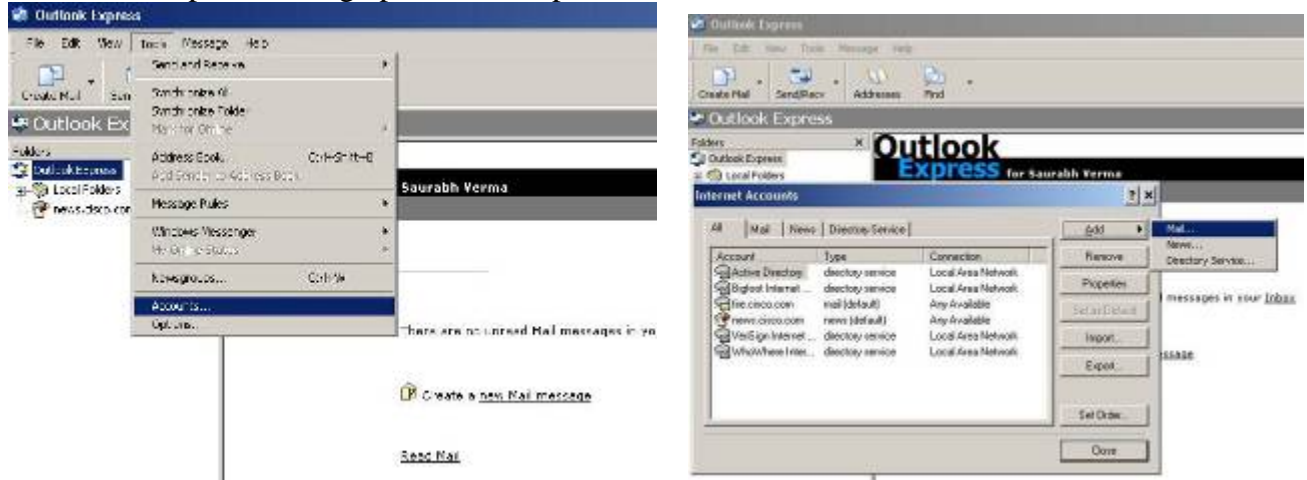
1. Test the Voiceview Express (VVE) through IP Phones. Select services, and then select the “CME Service URL”. Use the password 789, created during enrollment to login. Make sure you can listen to the messages and delete messages from the VVE session.



2. Test the IMAP integration using your mail client. Launch the mail client and configure a new account (look at the attached screen capture as an example). For Outlook Express:

- i. Click on Tools, Accounts
- ii. Click on the Add button, and select Mail
- iii. Configure a display name
- iv. For the email address, configure the <username>@10.1.10.1. The username is the one you created in the “User Parameter” tab.
- v. On the Email Server setting, select the incoming mail server as an IMAP server. For incoming and outgoing server, configure 10.1.10.1
- vi. Enter the Account name and Password.

Below is an example of setting up Outlook Express....



Internet Connection Wizard

Your Name

When you send e-mail, your name will appear in the From field of the outgoing message. Type your name as you would like it to appear.

Display name:
For example: John Smith

< Back Next > Cancel

Internet Connection Wizard

Internet E-mail Address

Your e-mail address is the address other people use to send e-mail messages to you.

E-mail address:
For example: someone@microsoft.com

< Back Next > Cancel

Internet Connection Wizard

E-mail Server Names

My incoming mail server is a server.

Incoming mail (POP3, IMAP or HTTP) server:

An SMTP server is the server that is used for your outgoing e-mail.

Outgoing mail (SMTP) server:

< Back Next > Cancel

Internet Connection Wizard

Internet Mail Logon

Type the account name and password your Internet service provider has given you.

Account name:

Password:
 Remember password

If your Internet service provider requires you to use Secure Password Authentication (SPA) to access your mail account, select the Log On Using Secure Password Authentication (SPA) check box.

Log on using Secure Password authentication (SPA)

< Back Next > Cancel

