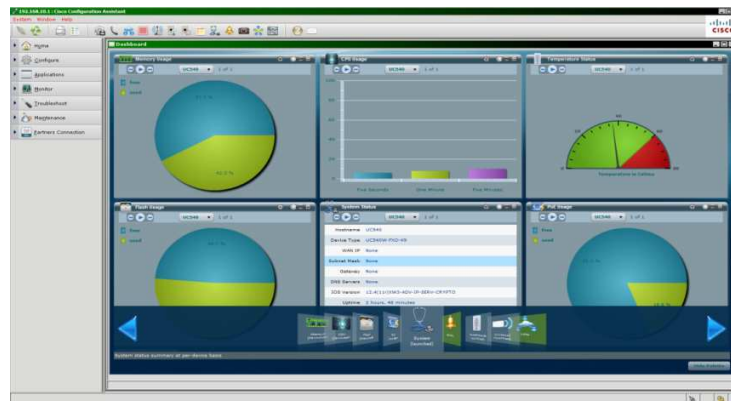
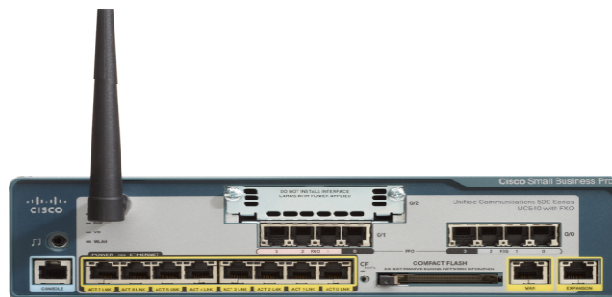


# Cisco Small Business Pro

## Smart Business Communication System

### Technical Enablement Labs



## Lab 5

### FXO PSTN Trunk Configuration

Introduction..... 3

Information Required..... 3

Configuration..... 3

    Voice Trunk Settings..... 3

    Outgoing Dial Plan..... 4

    Save your work ..... 7

## Introduction

This lab is also something that can be done in a staging environment. It is the opportunity for you to enter configuration data you collected during your site survey/customer questionnaire wrt the use of Analog FXO ports as PSTN Interface. These can be used in a route list at a lower priority than a preferred SIP trunk for example, or exclusively for the whole outgoing dial plan.

In this lab, you will:

- Determine which FXO ports will be active
- Modify the existing default FXO Group membership to include a unique subset of active FXO lines
- Add a New PSTN FXO trunk group containing other unique active FXO lines
- Assign the PSTN Trunk Group to the outgoing dial plan where you prefer to use it.

Note: I have not had good success renaming the default PSTN FXO trunk group, so please leave it as FXO.

## Information Required

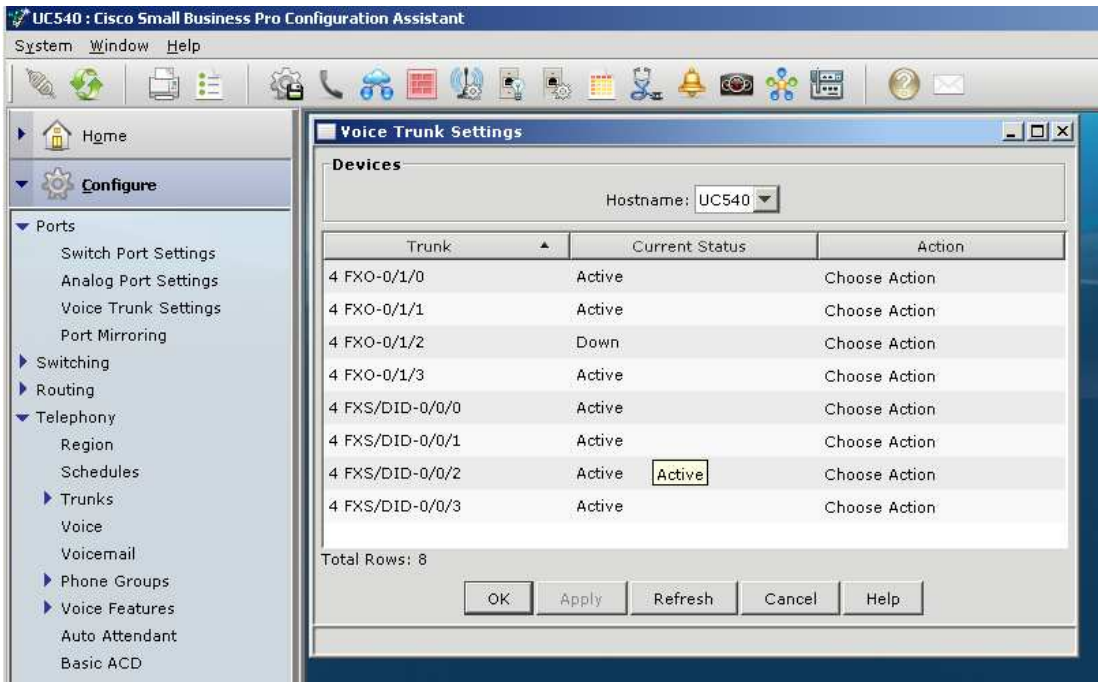
For this configuration you will need to have:

- Know how many PSTN Line Circuits will be provided at the Small Business and cross connected to the UC540.
- If not using all 4, understand which ports you will plug them into.
- Decide which dial plan routes will use PSTN as primary backup or not at all

## Configuration

### ***Voice Trunk Settings***

Make sure only the FXO ports you plan to cross connect are active. Notice 0/1/2 is turned off since I am not using it.



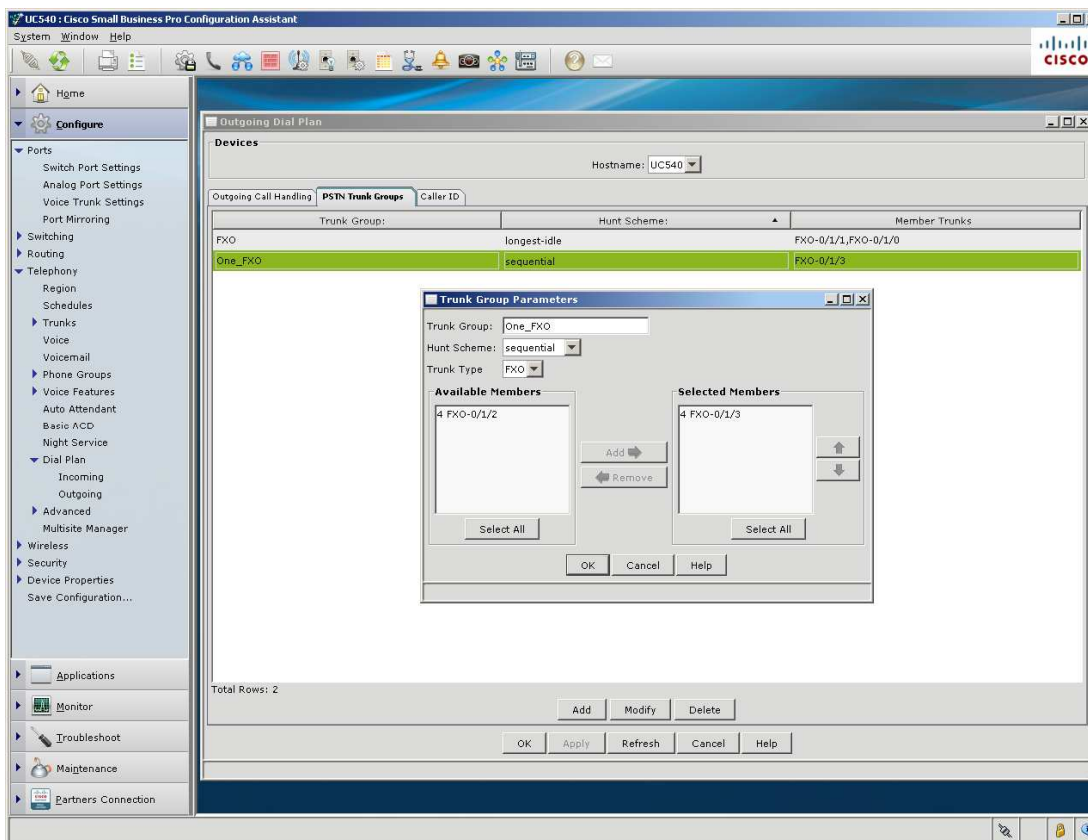
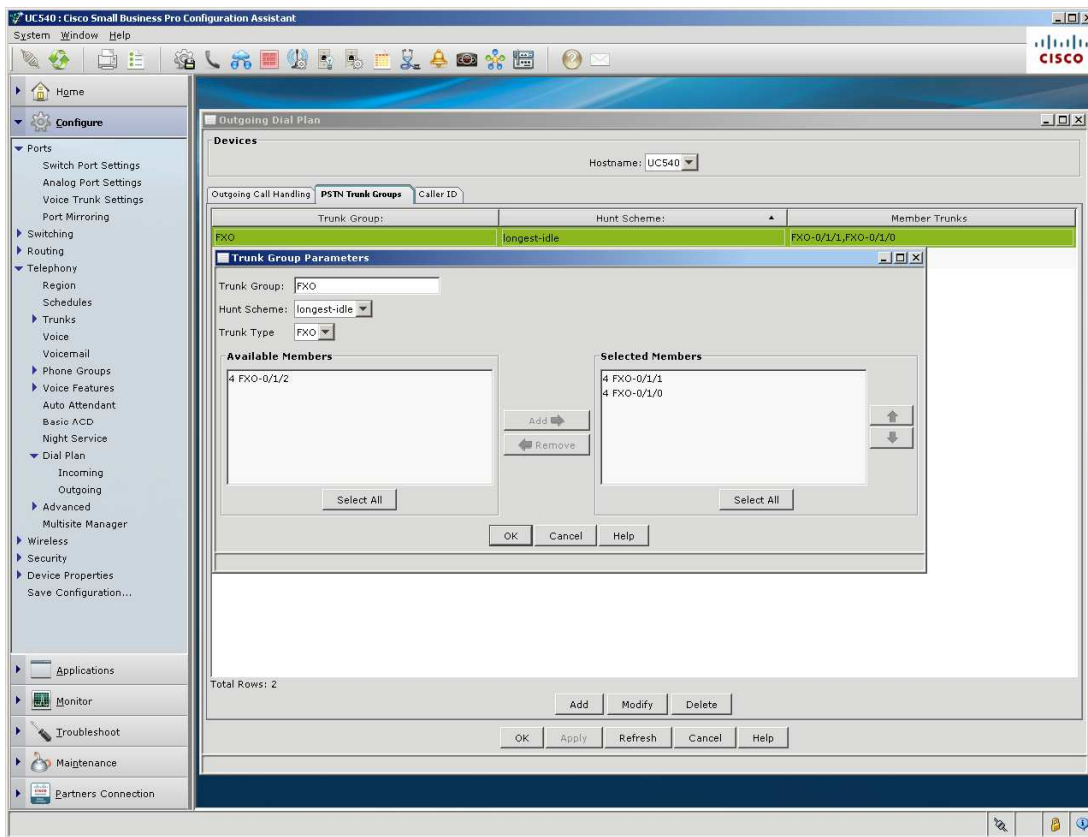
## ***Outgoing Dial Plan***

PSTN trunk Group Tab will show the existing default group of all FXO lines.

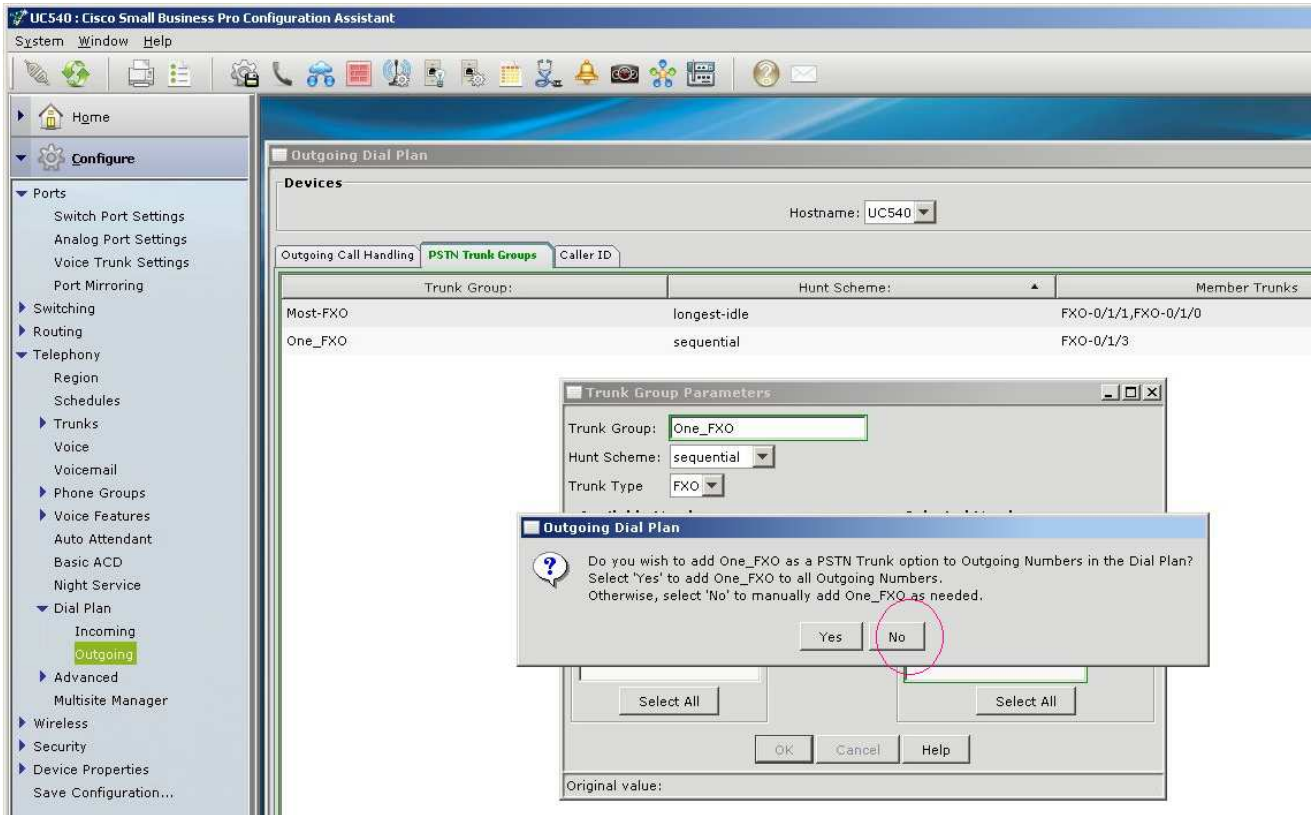
Adjust this group to include only 2 ports, and not the inactive port. I also changed the name.

Next, add a new PSTN trunk Group, to contain one of the FXO lines by itself. Do not include the inactive port.

Show below is the end result after configuration:

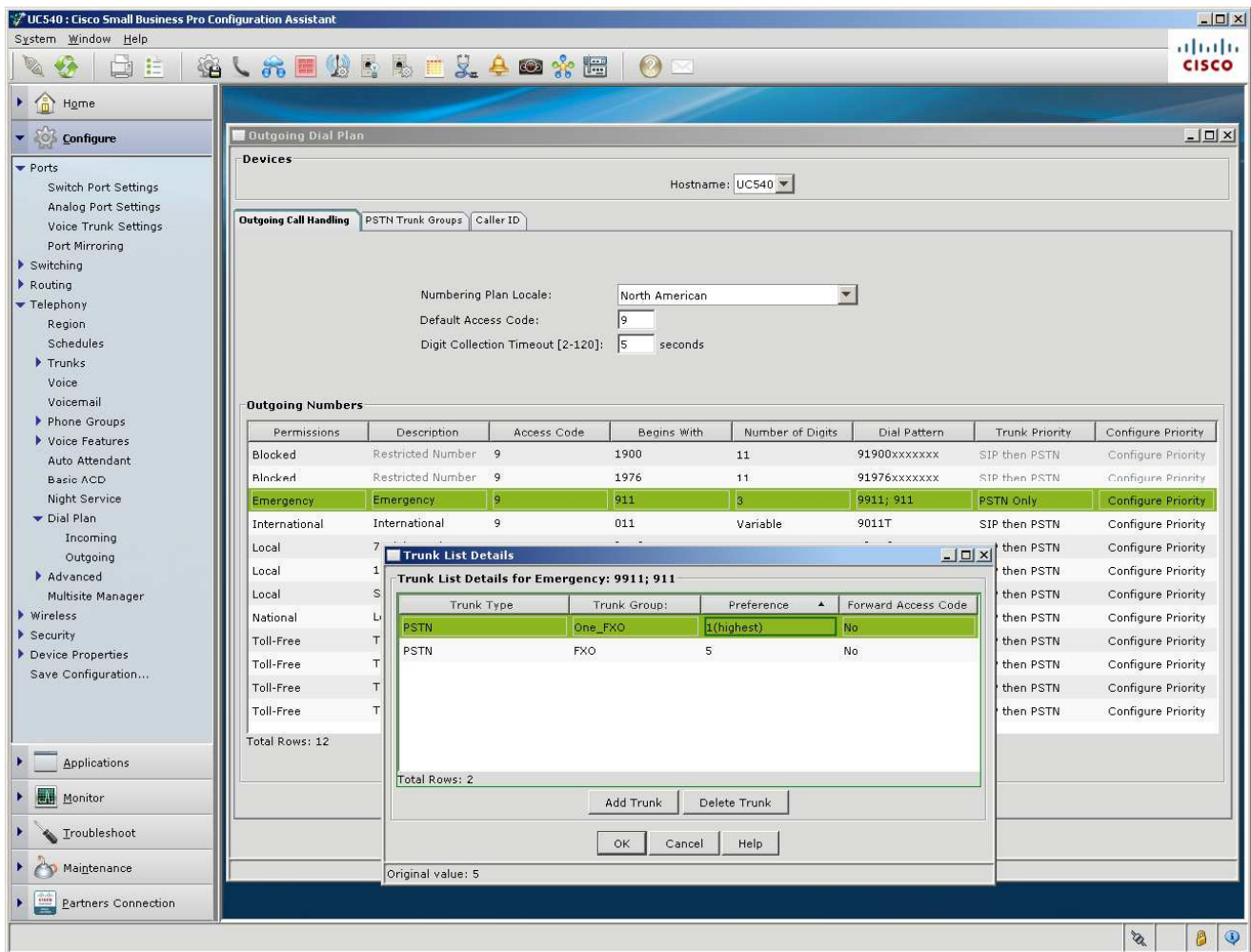


When you apply the new PSTN trunk group, CCA will ask if you want it to be used for the whole dial plan or selectively. Click "NO" if selective assignment is what you plan, and as I am demonstrating.



Now Adjust the outgoing dial plan to use the FXO trunk you desire. I am adjusting 9911; 911.

In my case I adjusted the priority of the 2 member FXO to 5 and the one I want to 'prefer' to 1:



## Save your work

You can test this when the FXOs are connected.