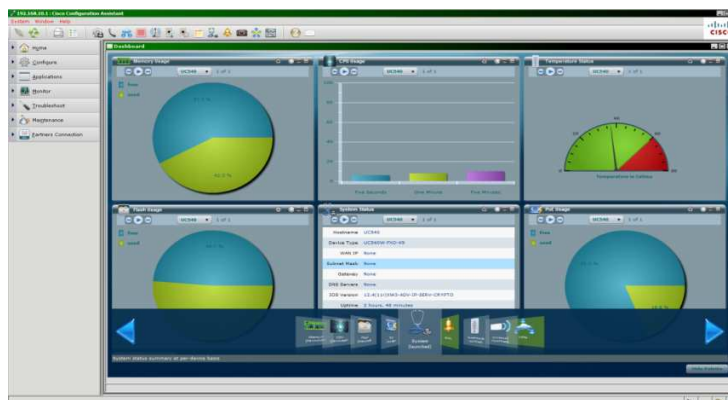


Cisco Small Business Pro

Smart Business Communication System

Technical Enablement Labs



Lab 24

NTP Configuration for UC500

Introduction..... 3

Configuration..... 3

 System Time 3

Save..... 6

Introduction

In any Smart Business Communication System (SBCS) deployment, time synchronization is important so that phones display correct times, schedules operate according to the actual time, and voice mail time stamps are accurate, just to name a few reasons.

The System needs to be able to ping the NTP server you choose to synchronize with, and a google search will give some recommendations on ones to use.

This lab shows how this can be accomplished using CCA with a UC500 and a Switch (ESW model).

This should be performed soon after you complete the Telephony Setup Wizard for your Day 0 provisioning.

Configuration

First step is figure out your NTP host and NSLOOKUP on it to determine its IP address. I do this in my Cisco lab, so don't have external access.

```
C:\>nslookup ntp-rtp1.cisco.com
Server: dns-rtp.cisco.com
Address: 64.102.6.247
Name: ntp-rtp1.cisco.com
Address: 10.81.254.131
```

System Time

Navigate in the Configuration Drawer to Device Properties → System Time. Notice your UC500 may have the correct time as it may be synchronized to the CCA PC, not NTP.

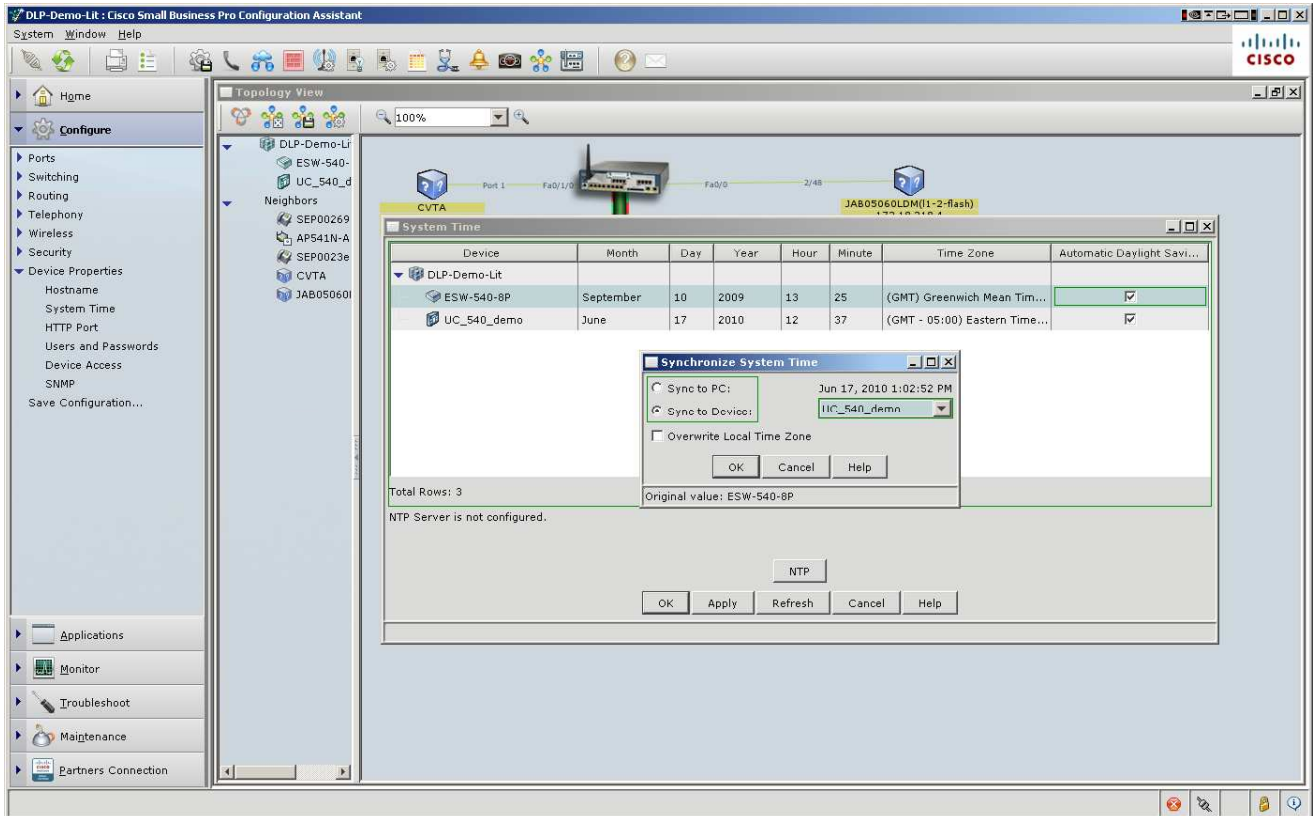
The screenshot shows the Cisco Small Business Pro Configuration Assistant interface. The main window displays a network topology with a central switch (ESW-540) connected to a UC500 (UC_540_d) and several IP phones (Five Zerofive - 201, Five Zerofive - 202, Five Zerofive - 203). The UC500 is connected to the switch via Port 1. The IP phones are connected to the switch via their respective ports. The System Time window is open, showing a table of devices and their system times. The table has columns for Device, Month, Day, Year, Hour, Minute, Time Zone, and Automatic Daylight Saving Time. The table contains three rows: DLP-Demo-Lit, ESW-540-8P, and UC_540_demo. The UC_540_demo row shows a time of June 17, 2010, 12:37, and a time zone of (GMT - 05:00) East... The NTP Server is not configured.

Device	Month	Day	Year	Hour	Minute	Time Zone	Automatic Dayl...
DLP-Demo-Lit							
ESW-540-8P	September	10	2009	13	25	(GMT) Greenwich M...	<input type="checkbox"/>
UC_540_demo	June	17	2010	12	37	(GMT - 05:00) East...	<input checked="" type="checkbox"/>

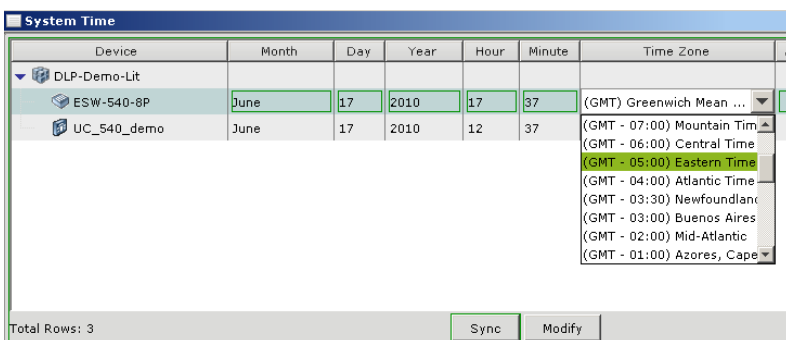
Total Rows: 3
NTP Server is not configured.

Buttons: Sync, Modify, NTP, OK, Apply, Refresh, Cancel, Help

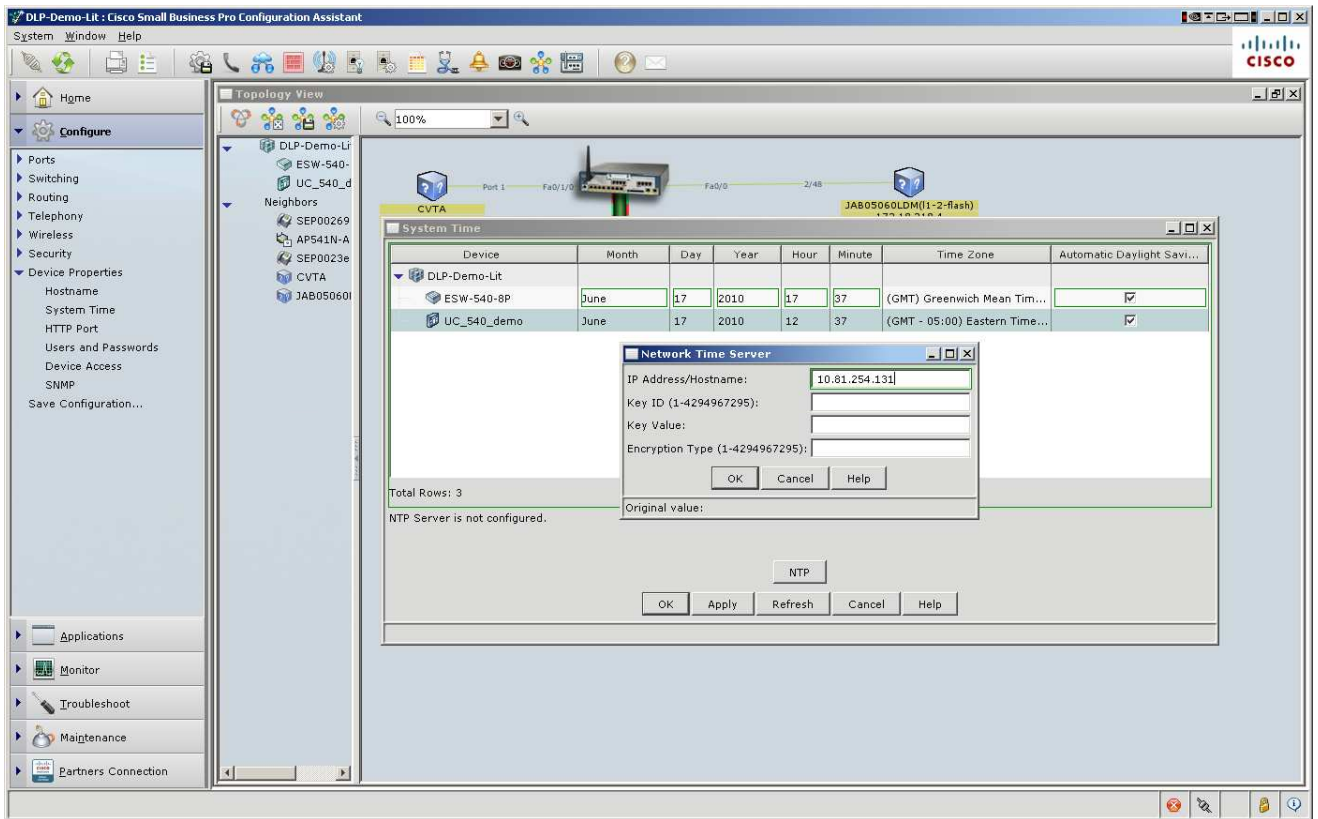
Synchronize the ESW switch to the UC540 and then specify an NTP server IP for the UC540. A few steps to set that + the time zone and DST. This may require a CUE reload on the UC500 so do this when you can tolerate the CUE being offline for about 15 minutes. You will receive a pop up if it is required.



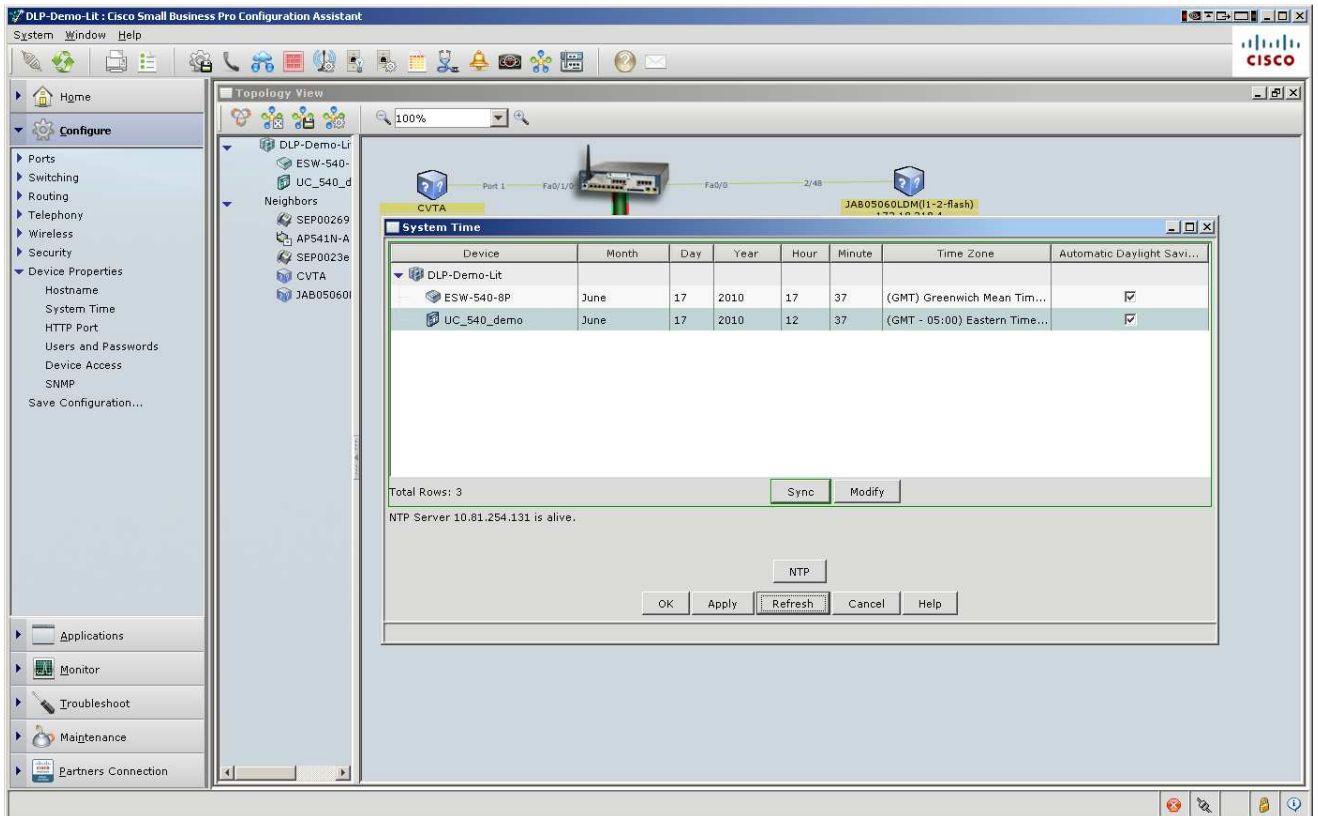
You will need to set the time zone by clicking on it:



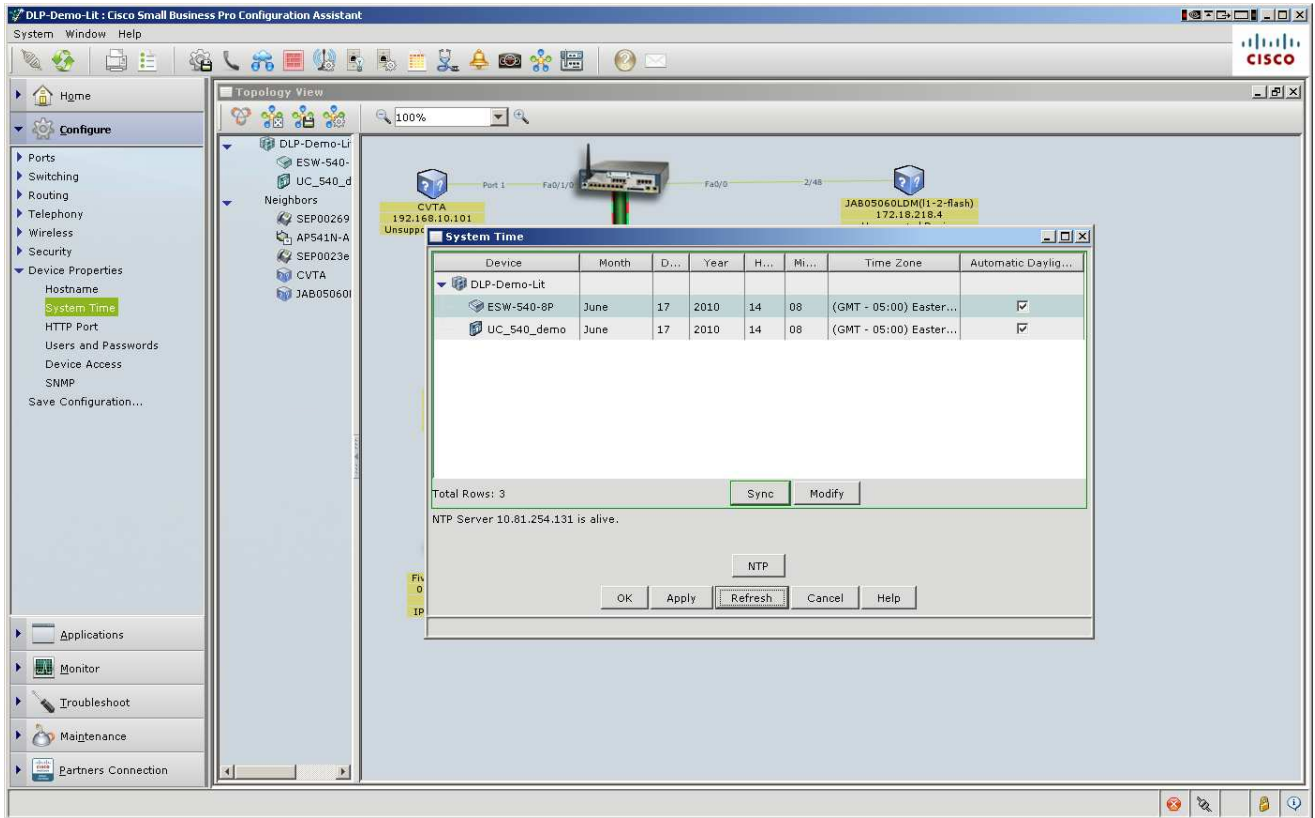
Next click on the UC540 ICON in the list of devices first so its highlighted, and then click NTP in that window, so we can add the NTP Hostname or IP address to apply to the UC540:



Notice the NTP is alive message:



You will be done when everything is in synch:



Save

