



# Cisco UCS Director Tech Module

Cisco UCS Manager (UCSM)

Version: 1.0

September 2016



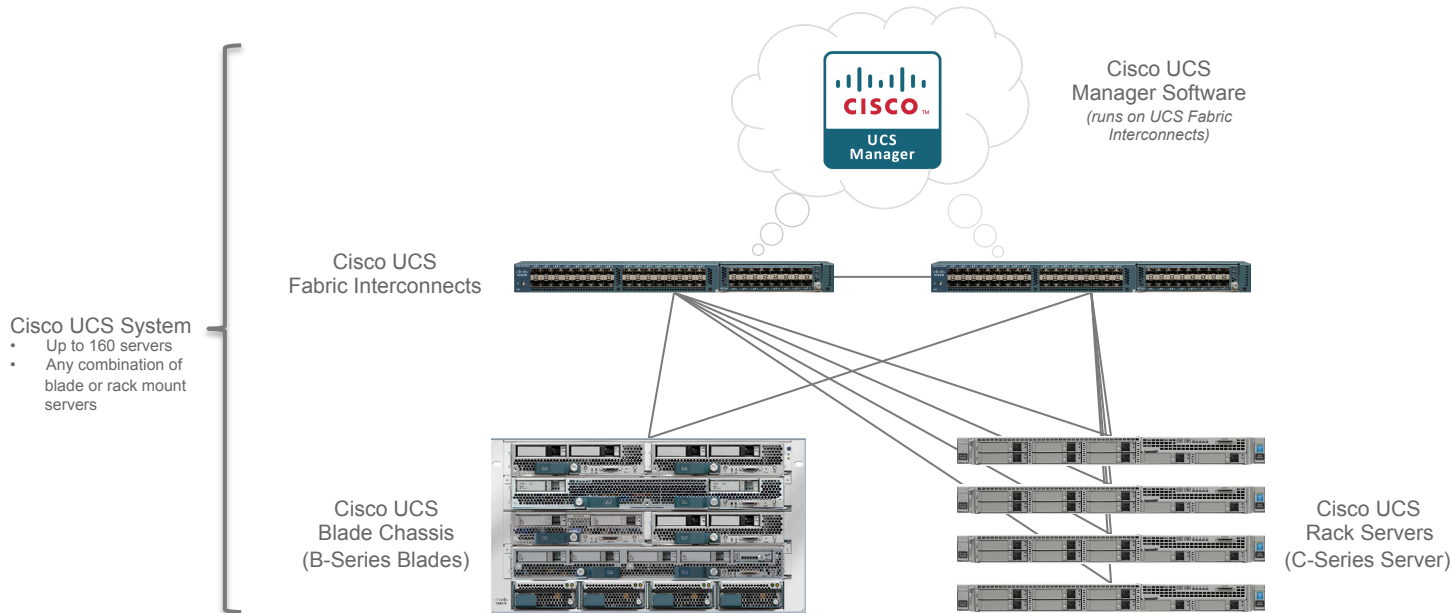
# Agenda

- Overview & Architecture
- Hardware & Software Compatibility
- Licensing
- Orchestration Capabilities
- Reports
- Example Use-Cases

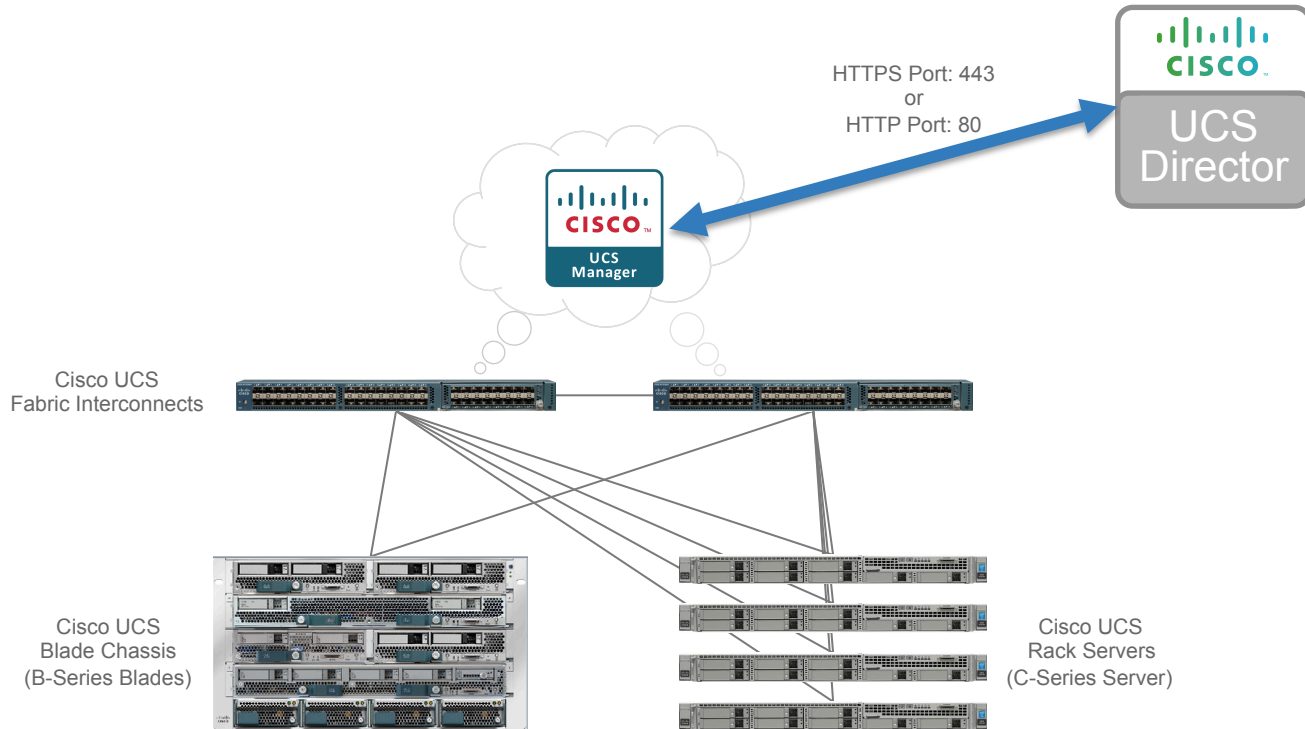


# Architecture & Overview

# UCS System Architecture

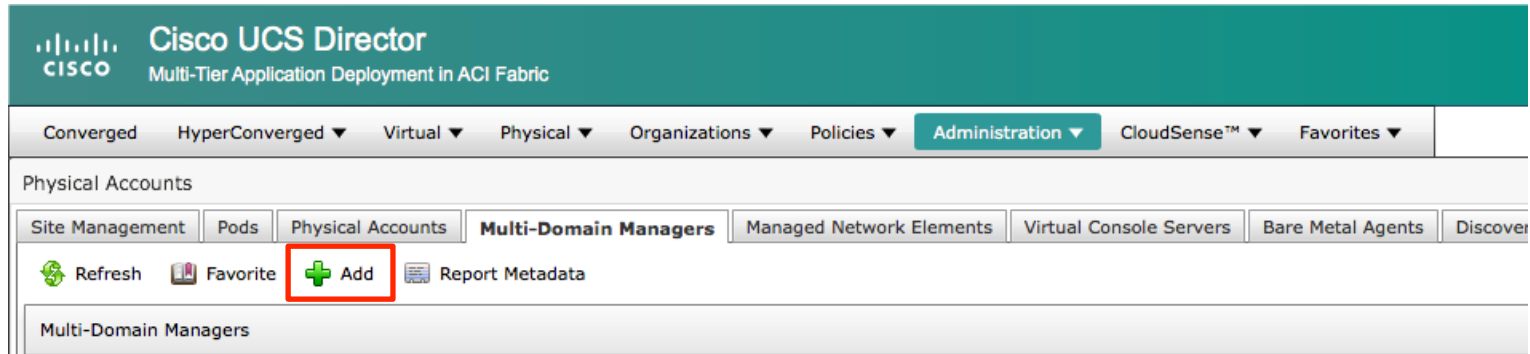


# UCS Director and UCS Manager Integration



# Adding a UCS Manager Account

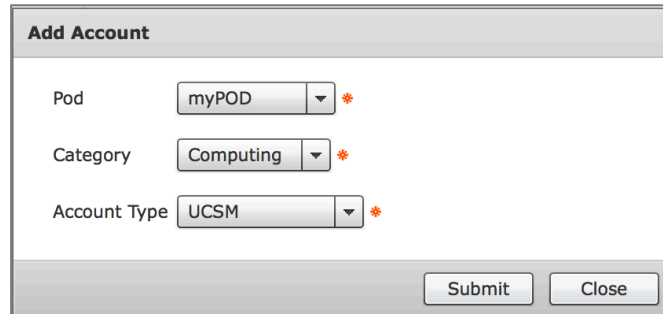
- Navigate to **Administration** → **Physical Accounts**, choose the **Physical Accounts** tab and click **Add**



The screenshot displays the Cisco UCS Director interface. At the top, the header reads "Cisco UCS Director" and "Multi-Tier Application Deployment in ACI Fabric". Below this is a navigation bar with tabs for "Converged", "HyperConverged", "Virtual", "Physical", "Organizations", "Policies", "Administration", "CloudSense™", and "Favorites". The "Administration" tab is selected. Underneath, the "Physical Accounts" section is active, showing a row of tabs: "Site Management", "Pods", "Physical Accounts", "Multi-Domain Managers", "Managed Network Elements", "Virtual Console Servers", "Bare Metal Agents", and "Discover". The "Physical Accounts" tab is selected. Below the tabs, there are four action buttons: "Refresh", "Favorite", "Add", and "Report Metadata". The "Add" button, which features a green plus sign icon, is highlighted with a red rectangular box. Below the action buttons, the "Multi-Domain Managers" section is visible.

# Adding a UCS Manager Account

- Select which **Pod** to add the account to
- Select **Computing** as the **Category**
- Set **Account Type** to **UCSM**



**Add Account**

Pod  \*

Category  \*

Account Type  \*

# Adding a UCS Manager Account

- Enter the information about the UCS Manager system to add the account

**Add Account**

Pod: myPOD

Category: Computing

Account Type: UCSM

Authentication Type: Locally Authenticated

Server Management: All Servers

Account Name: UCSM

Server Address: 172.31.241.1

Use Credential Policy

User ID: admin

Password: \*\*\*\*\*

Transport Type: https

Port: 443

Description:

Contact Email:

Location:

Service Provider:

Add Close



Converged HyperConverged Virtual Physical Organizations Policies Administration CloudSense™ Favorites

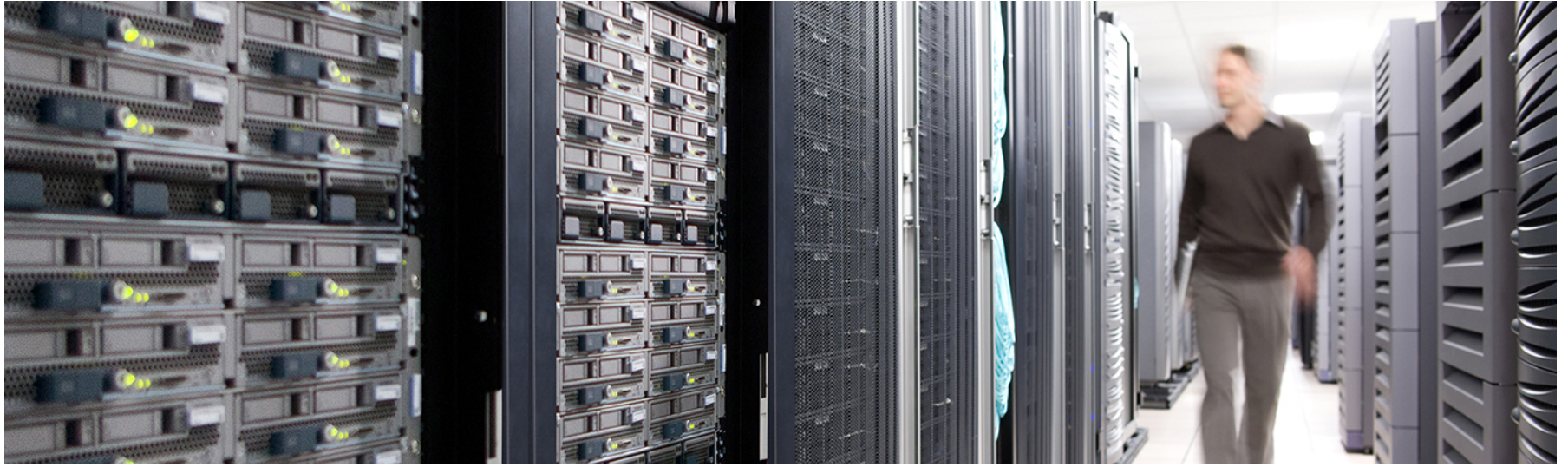
Physical Accounts

Site Management Pods Physical Accounts Multi-Domain Managers Managed Network Elements Virtual Console Servers Bare Metal Agents Discovered Devices

Refresh Favorite Add Device Discovery View Edit Delete Test Connection Manage Tag Add Tags Delete Tags

Account Name	Accou	Connection St	Pod	Cont	Loca	Server / Filer	Dei
ACI-UCSM	UCSM	Success	myPOD			172.31.241.1 [myPOD]	





# Hardware & Software Compatibility

# IMPORTANT!!

- The following slide featuring support information may be out of date
- **ALWAYS** check the most up to date version of the UCS Director Compatibility Matrix
- The latest Compatibility Matrix and other supporting UCS Director documentation can be found at the following location:

[http://www.cisco.com/c/en/us/td/docs/unified\\_computing/ucs/ucs-director/doc-roadmap/b\\_UCSDirectorDocRoadmap.html](http://www.cisco.com/c/en/us/td/docs/unified_computing/ucs/ucs-director/doc-roadmap/b_UCSDirectorDocRoadmap.html)

# UCS Director Cisco UCS Manager Support

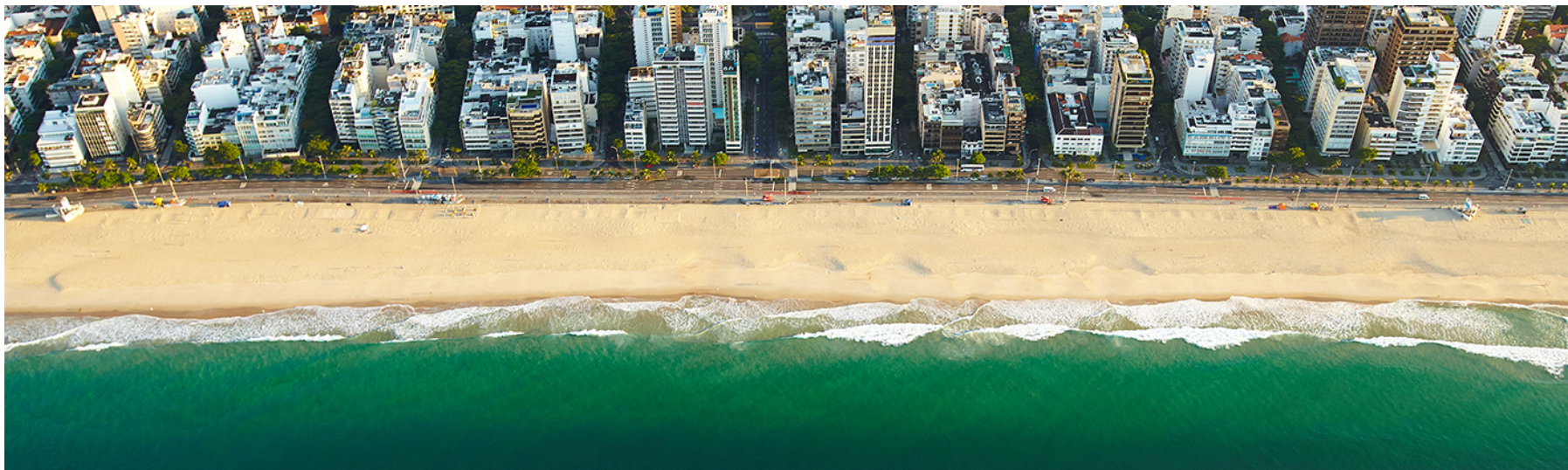
(As of UCS Director 6.0)

## Supported Cisco UCS Hardware Platforms

- Supports all Cisco UCS hardware compatible with supported UCS software versions
- UCS Hardware and Software Interoperability Matrices:  
[http://www.cisco.com/en/US/products/ps10477/prod\\_technical\\_reference\\_list.html](http://www.cisco.com/en/US/products/ps10477/prod_technical_reference_list.html)

## Supported Cisco UCS Software Versions

- 2.2(1\*)
- 2.2(2\*)
- 2.2(3\*)
- 2.2(4\*)
- 2.2(5\*)
- 2.2(6\*)
- 2.2(7\*)
- 2.2(8\*)
- 3.1(1\*)



# Licensing

# Licensing Information

- UCS Director licensing is purchased solely in the form of physical server licenses
- However, included in each physical server license purchased is a storage device license and a network device license
- In addition to physical server tracking and licensing, UCS Director tracks the number of storage and network devices being managed against the number of licenses available
- If additional storage and/or network device licenses are required, they can be acquired by purchasing additional physical server licenses

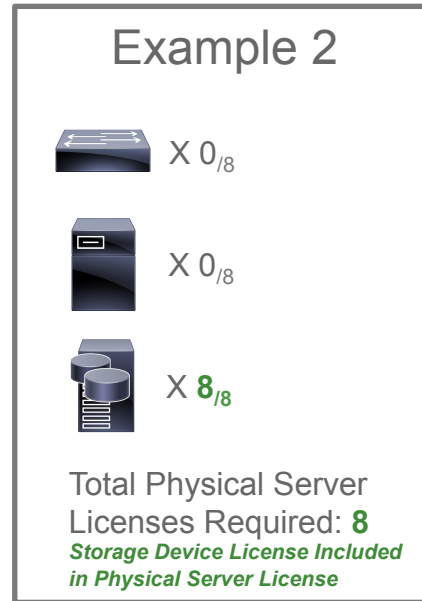
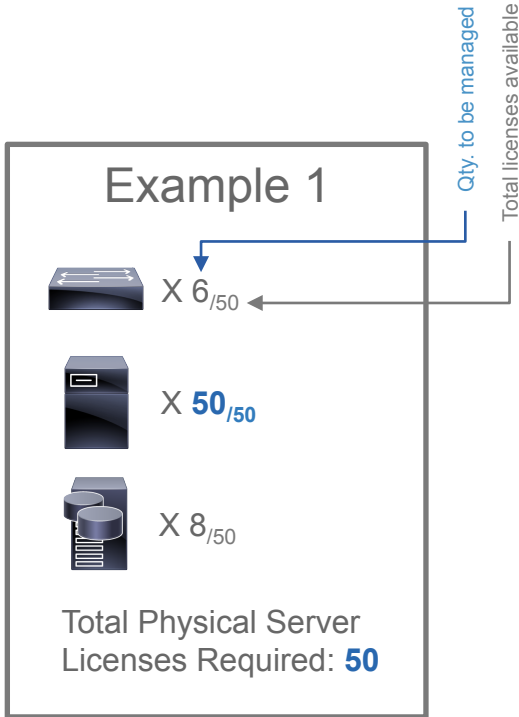
# Licensing Information

- Licensing is not dependent on the UCS Manager account itself
- Licensing is tied to the number of physical servers being managed within the UCS Manager account
- Each managed physical server counts as a physical server license in UCS Director

# Licensing Information

- **NOTE!**: You can choose specific servers (a subset) within a UCS Manager account that you want UCS Director to manage
  1. Edit the UCSM account, set the **Server Management** option to **Selected Servers**
  2. Navigate to **Physical** → **Compute**, then click on the UCS Manager account in the left pane
  3. Select the **UCS Discovered Servers** tab in the right pane
  4. Select the server(s) to be managed by UCS Director and click the **Manage Servers** action button

# Licensing Examples







# Orchestration Capabilities

# Orchestration Capabilities

## Service Profiles

- Create UCS Service Profile
- Select UCS Service Profile
- Delete UCS Service Profile
- Disassociate UCS Service Profile
- Associate UCS Service Profile
- Check UCS Service Profile Association Status
- Rename UCS Service Profile
- Clone UCS Service Profile
- Unbind UCS Service Profile from Template
- Bind UCS Service Profile to Template

## Service Profile Templates

- Create UCS Service Profile from Template
- Associate UCS Service Profile Template
- Disassociate UCS Service Profile Template
- Clone UCS Service Profile Template
- Delete UCS Service Profile Template

## Server Pools

- Create UCS Server Pool
- Delete UCS Server Pool
- Add Servers to UCS Server Pool
- Delete Servers from UCS Server Pool

## Organizations

- Create UCS Organization
- Delete UCS Organization

## Server Actions

- Power On UCS Server
- Power Off UCS Server
- Reset UCS Server Select UCS Server
- Reacknowledge Server Slot
- Server Maintenance
- Disassociate UCS Server
- Manage UCS Servers
- Unmanage UCS Servers
- Verify UCS Server Management State

## Policies

- Modify UCS Service Profile Scrub Policy
- Modify UCS Service Profile Boot Policy
- Create Service Profile iSCSI Boot Policy
- Modify Service Profile Boot Policy to Boot From iSCSI
- Delete UCS Boot Policy
- Create UCS Boot Policy
- Modify UCS Boot Policy LUN ID
- Clone UCS Boot Policy
- Modify UCS Boot Policy WWPN
- Change Maintenance Policy

## Storage Profiles

- Delete UCS Storage Profile
- Add UCS Storage Profile

## VLANS/VLAN Groups

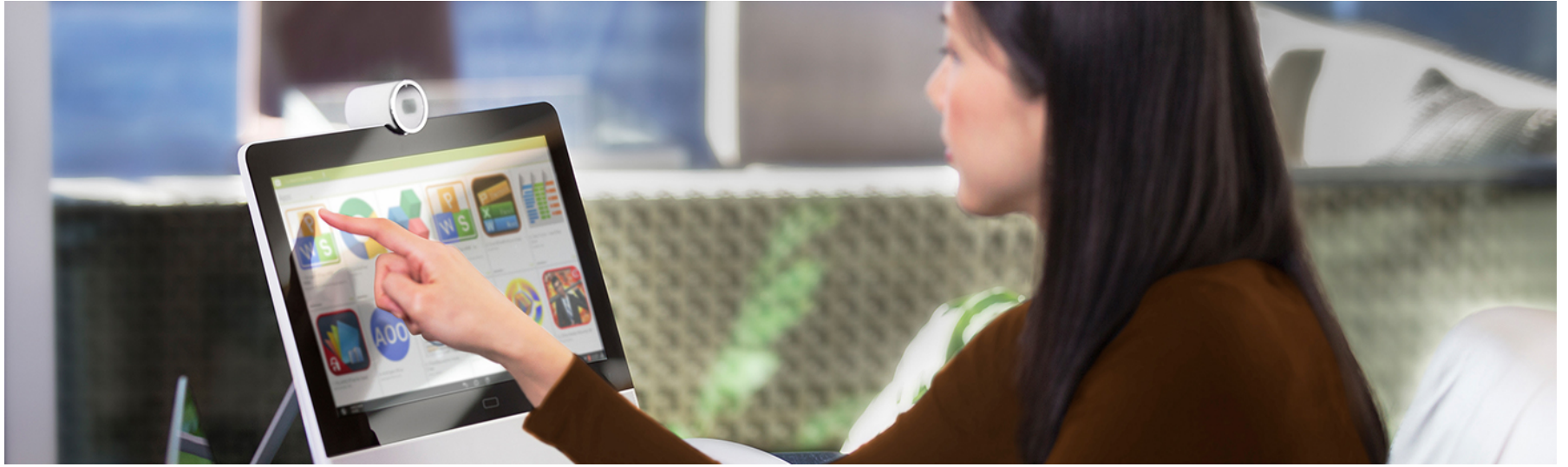
- Add VLANS to VLAN Group
- Delete VLANS from VLAN Group
- Add VLAN Add VLAN to Service Profile
- Delete VLAN from Service Profile
- Delete UCS VLAN Create VLAN Group
- Delete UCS VLAN Group
- Modify UCS VLAN/VLAN Group Org Permissions
- Add VLAN to Multiple UCS Managers

## vNICs/vNIC Templates

- Delete VLAN from Service Profile vNIC
- Add VLAN to vNIC Template
- Delete VLAN from vNIC Template
- Add iSCSI vNIC to Service Profile
- Delete iSCSI vNIC from Service Profile
- Add vNIC to UCS Service Profile
- Delete vNIC from Service Profile
- Delete UCS vNIC Template
- Bind UCS Service Profile vNIC to Template
- Unbind UCS ServiceProfile vNIC from Template
- Add UCS vNIC Template

## Time

- Add NTP Server to UCSM
- Delete NTP Server from UCSM
- Set Time Zone to UCSM



# Reports

# Tabular Reports and Information

## *At UCS Manager (Top) Level*

- Fabric Interconnects
- UCS Chassis
- FEX
- Time Zone
- Organizations
- Service Profiles
- Renamed Service Profiles
- Installed Firmware
- Equipment Global Policies
- LAN Global Policies
- iSCSI IP Pool
- UCS Decommissioned Servers
- UCS Servers
- UCS Servers
- UCS Discovered Servers
- System Tasks
- Management IP Pool
- Locales
- VLAN Groups
- VLAN Optimization Sets
- SAN Port Channels
- Storage Profiles
- VLANs
- VSANs
- LAN Port Channels
- QoS System Class
- Flow Control Policies

# Tabular Reports and Information

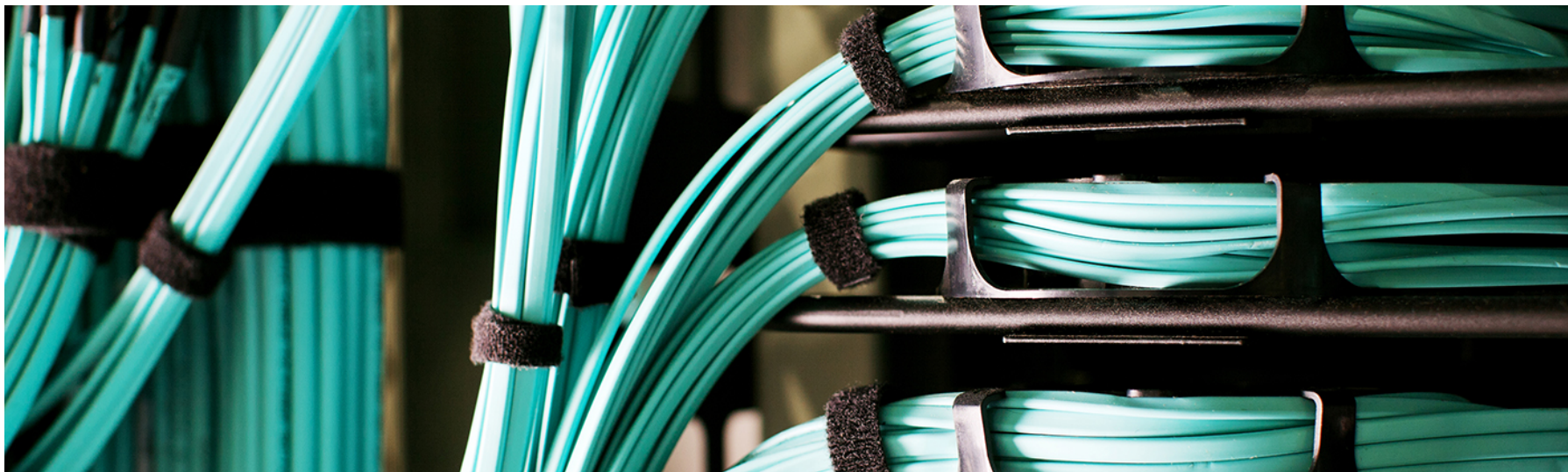
## *At Organization Level*

- Permitted VLANs
- Boot Policies
- vHBA Templates
- vNIC Templates
- Service Profile Templates
- MAC Pools
- WWNN Pools
- WWPN Pools
- UUID Pools
- DiskGroup Policy
- vMedia Policy
- Network Control Policy
- Server Pools
- FC Adapter Policies
- QoS Policy
- vNIC/vHBA Placement Policies
- Server Pool Policy Qualification
- Server Pool Qualification
- Service Profiles
- IQN Pools
- iSCSI Auth Profiles
- iSCSI Adapter Policies
- LAN Connectivity Policies
- SAN Connectivity Policies
- Storage Connectivity Policies
- Maintenance Policy
- IP Pools
- FC Zones
- Host Firmware Packages
- Faults
- VLAN Groups

# Tabular Reports and Information

## *At Service Profile Level*

- vHBAs
- iSCSI vNICs
- vNICs
- Server Details
- Boot Policies
- FC Zones
- Faults
- Service Request Details



# Example Use-Cases

# Example Use-Cases

- Use-Case #1: Deploy Physical Bare Metal Host



# Use Case #1: Deploy Physical Bare Metal Host

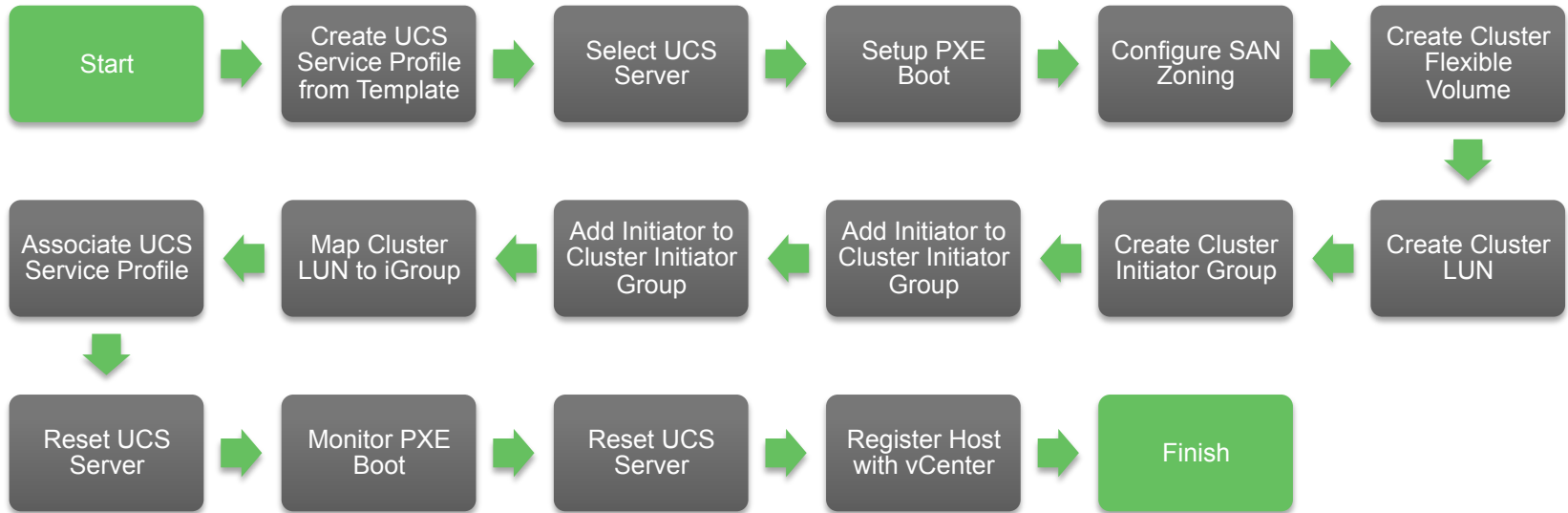
- The following use case example highlights how to automate the provisioning and configuration of a new physical bare metal server through UCS Director
- Configuration includes the following related to the physical server...
  - UCS Service Profile
  - Operating System Installation
  - Storage LUN Provisioning
  - SAN Zoning Configuration

# Use Case #1: Deploy Physical Bare Metal Host

Prerequisites that must be in place before running this use-case (workflow)

- UCS Service Profile Template
- UCS Director Bare Metal Agent (BMA) must be installed and added as a Bare Metal Account in UCS Director
- One or more images must be added to the Bare Metal Agent
- Storage controller and SAN must be physically cabled and all components added to UCS Director

# Use Case #1: Deploy Physical Bare Metal Host





**CISCO**

*TOMORROW starts here.*