

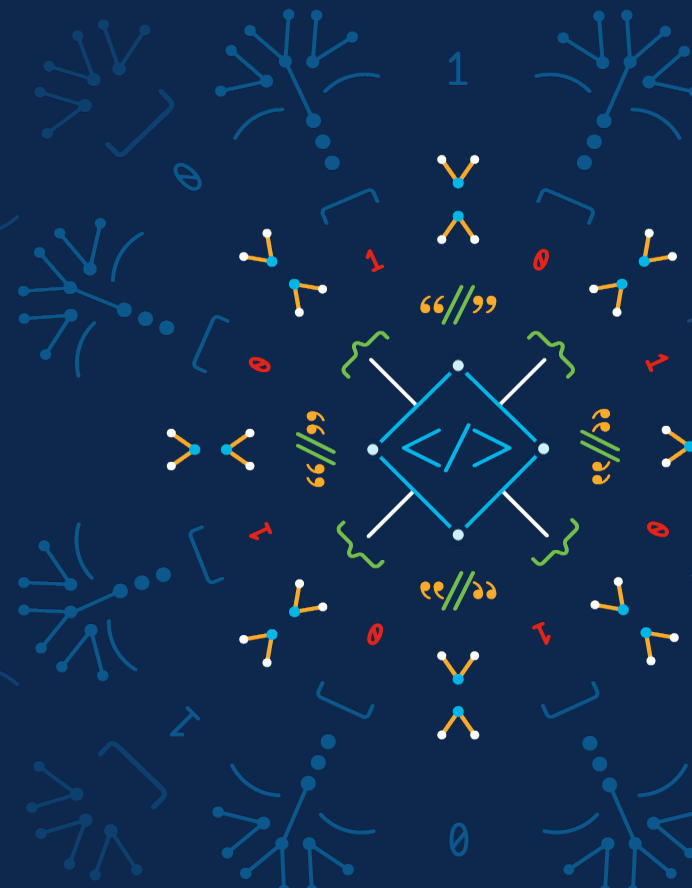
# Auto Healing with NSO

Using NSO & Opensource Monitoring Tools

Eswaramoorthy Ramasamy

Software Consulting Engineer

11-May-2022

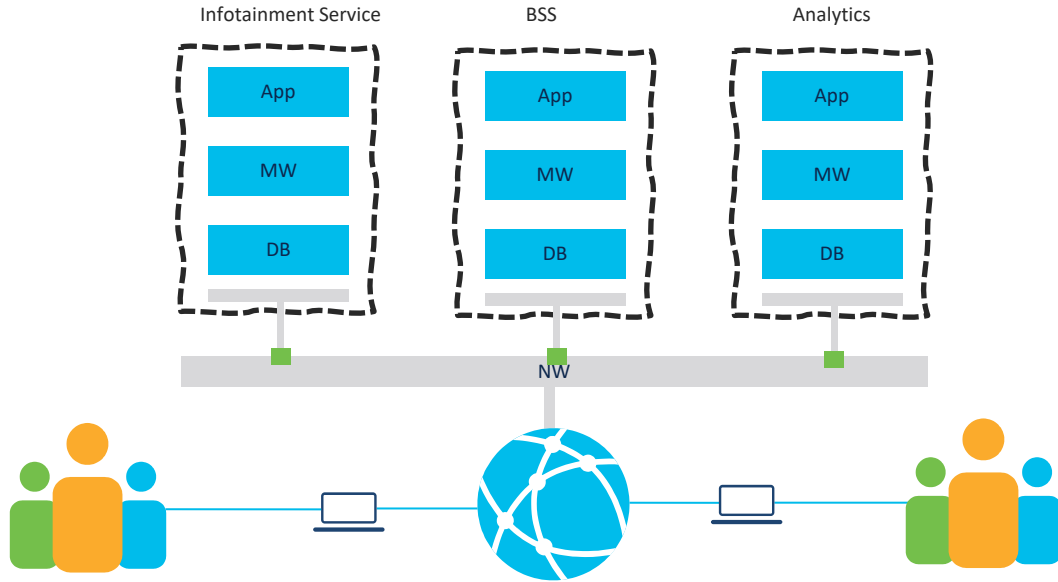




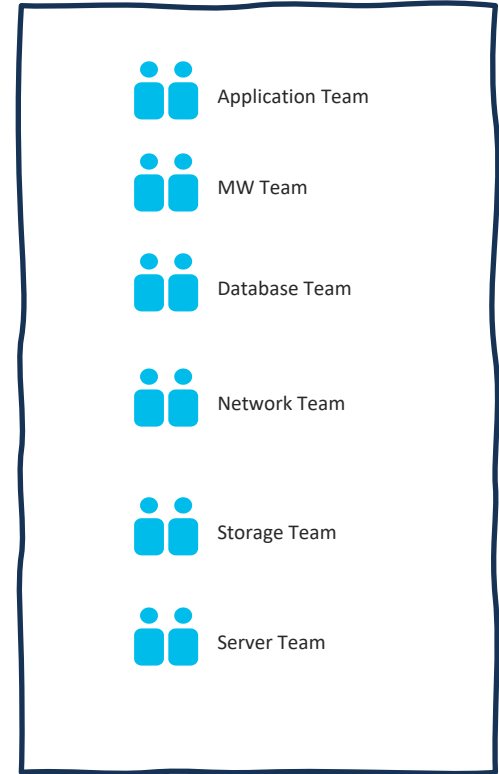
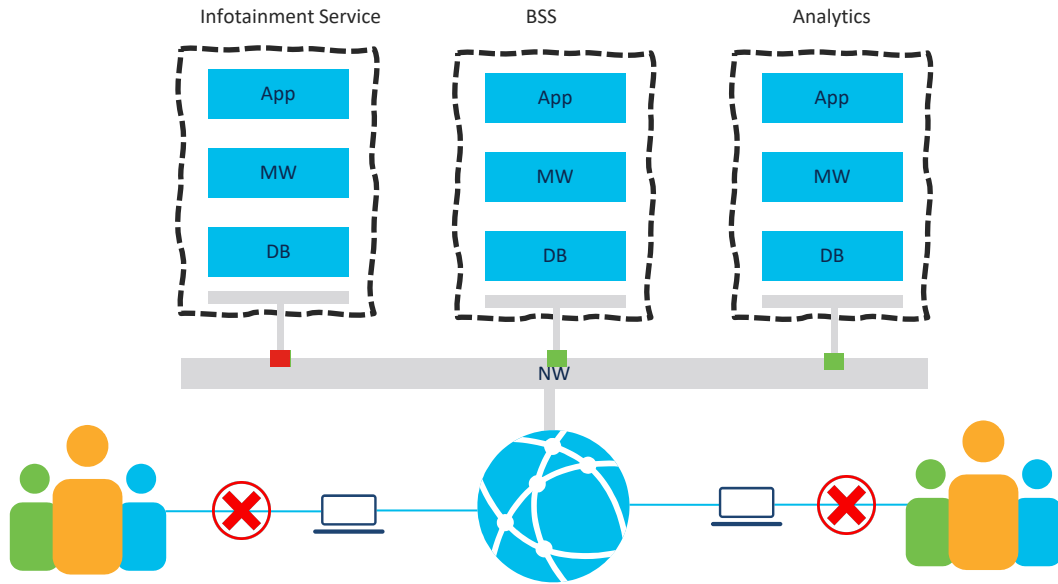
# Agenda

- 1 Typical Service Delivery
- 2 Solution Components
- 3 Demo
- 4 Pillars of Automation Strategy
- 5 Approach for Automation Journey
- 6 Benefits & Use cases

# Typical Service Delivery Environment



# Typical Service Delivery Environment



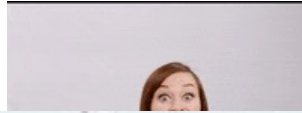
# What happens next ?



App Team



Network Team



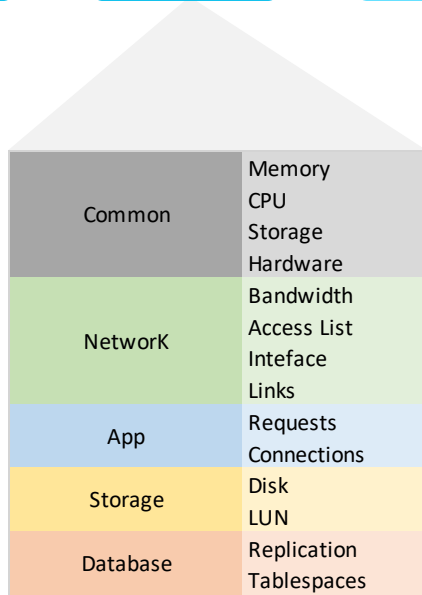
MW Team



# Problem Resolution Flow



# Problem Resolution Flow



# Problem Resolution Flow



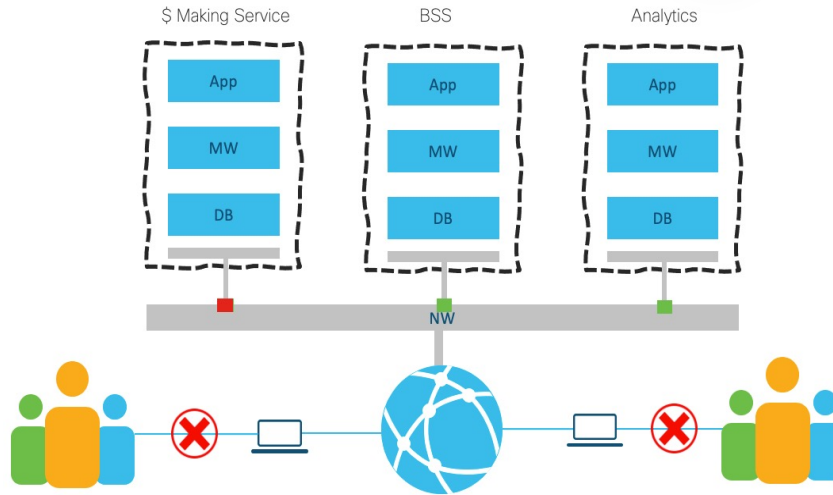
Common	CPU	HIGH/LOW
	Memory	HIGH
	Storage	LOWSPACE
	Hardware	FAILURE/HIGH TEMP
NetworkK	Bandwidth	NO ADDITIONAL BW Available
	Access List	NO ACCESS
	Inteface	UP/DOWN
	Links	UP/DOWN
App	Requests	HIGH
	Connections	NO CONNECTION
Storage	Disk	LOWSPACE/ DISK FAILED
	LUN	OFFLINE
Database	Replication	SYNC-ISSUE
	Tablespaces	HIGH



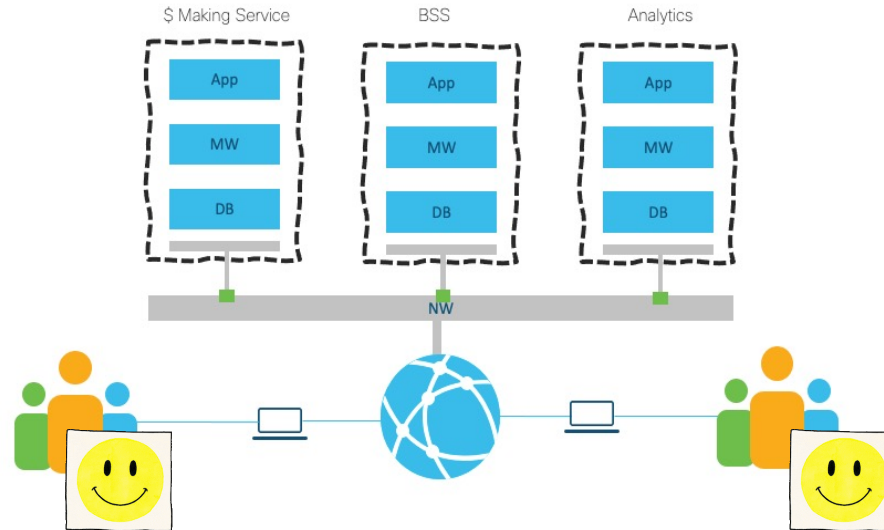
# Problem Resolution Flow



# Problem Resolution Flow

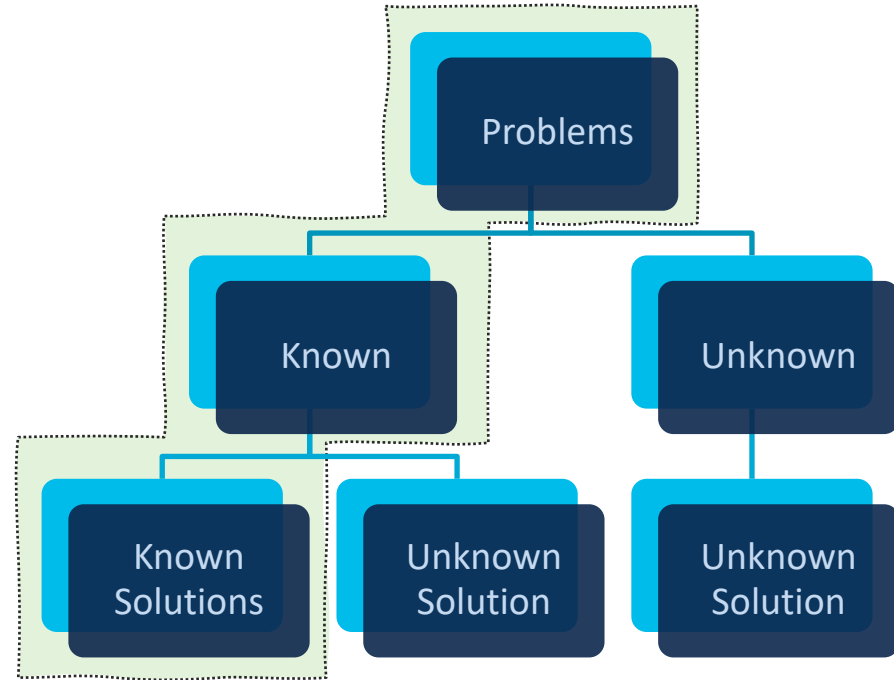


# Problem Resolution Flow



How NSO can be used to Automate  
this entire process of Problem  
Resolution?

# *Problem Classification*





## Solution Components

- **Network Services Orchestrator**
  - Event Log History
  - Device Group Mapper
  - Knowledge Base Intent Identifier
  - Knowledge Base Definitions
- **Nagios**
  - Event Handler
- **Nexus Device**

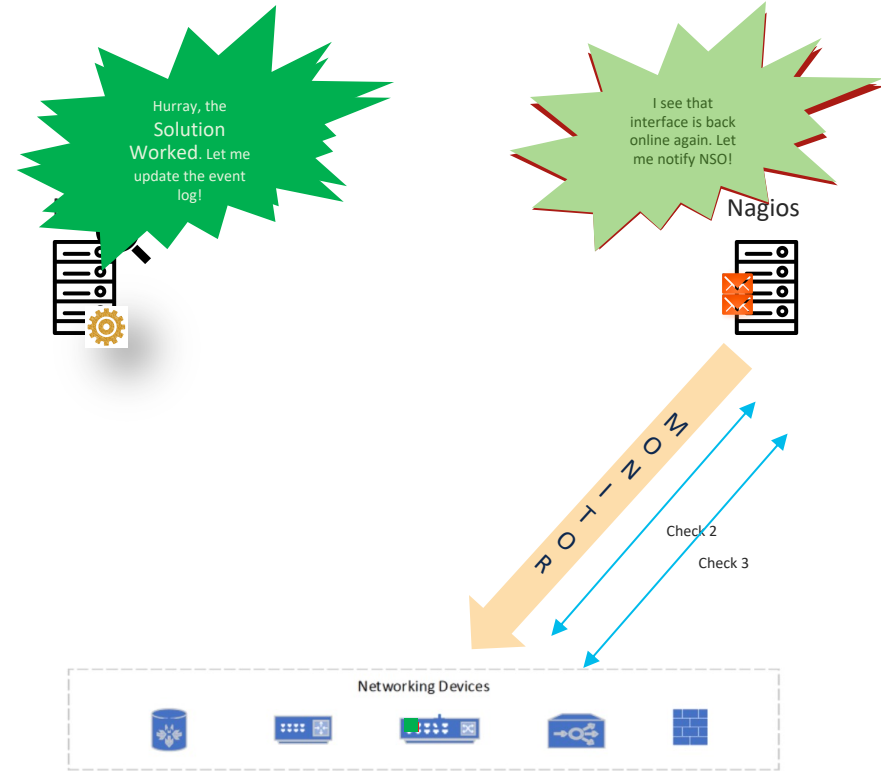
# Solution Architecture

The background features a repeating pattern of faint, light blue architectural and technical symbols. These include various types of brackets (square, curly, and angle), arrows, and lines, some of which are arranged in a way that suggests a network or a complex structure. The symbols are scattered across the dark blue background, creating a subtle, technical aesthetic.



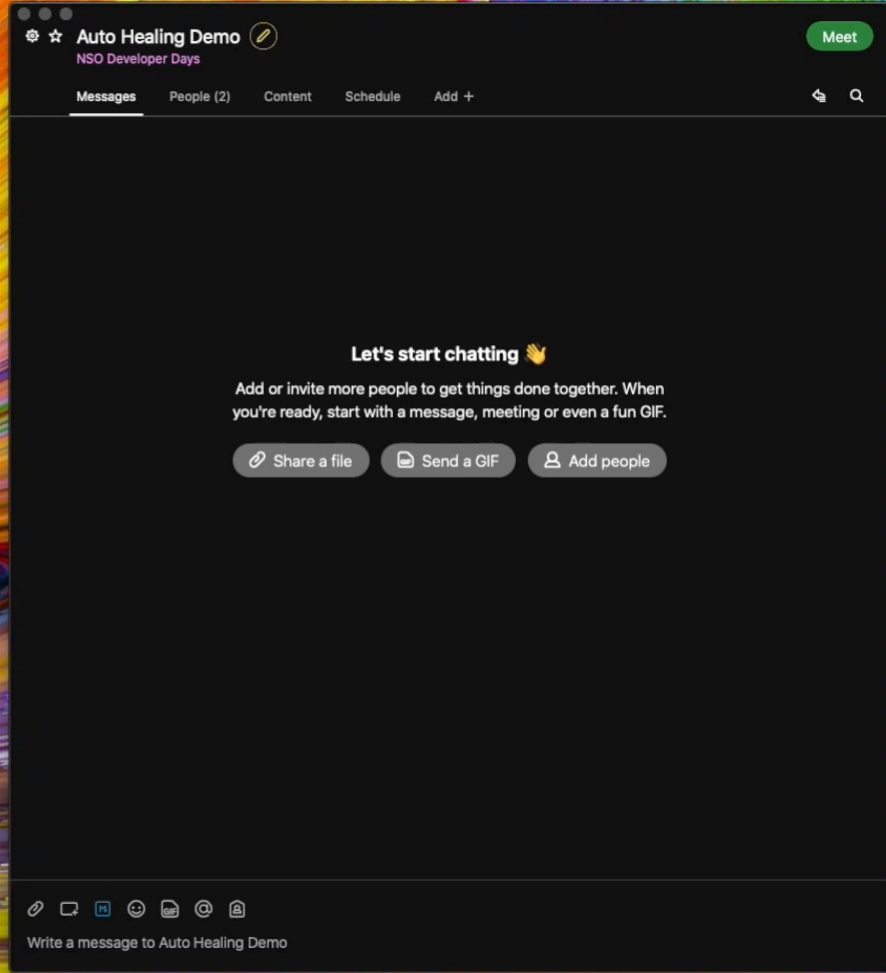
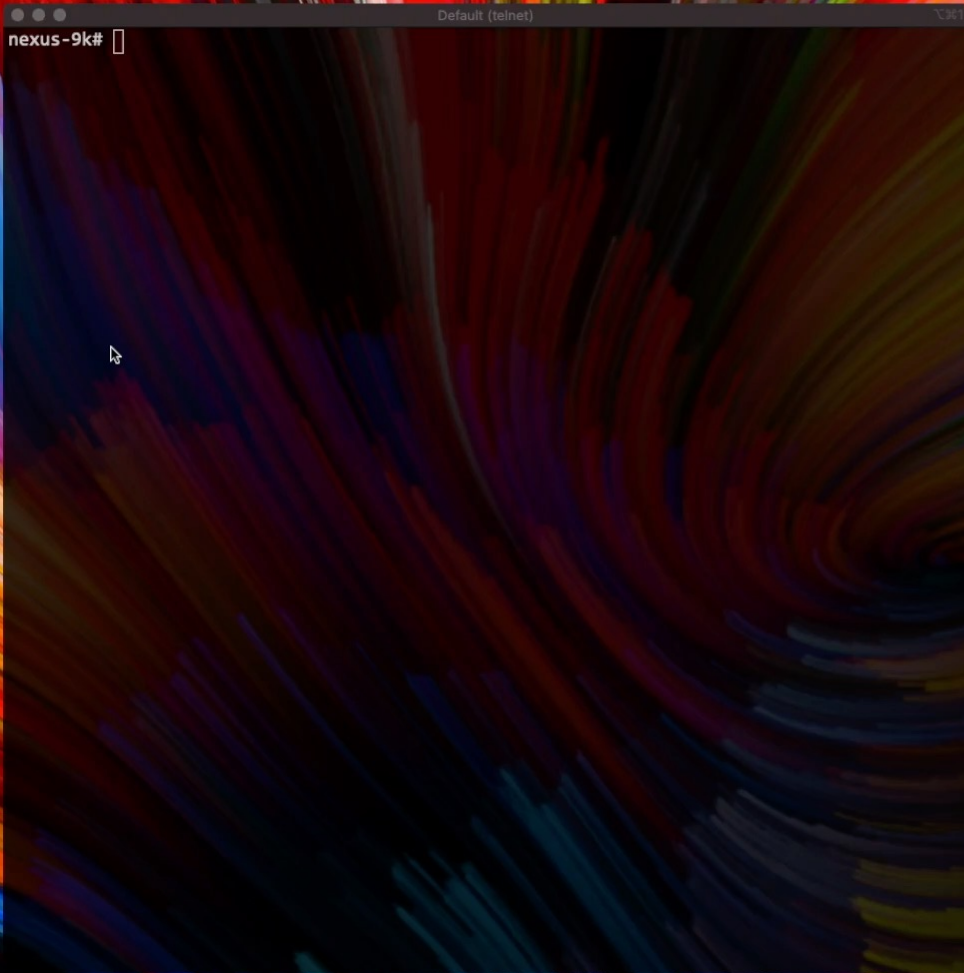
# Auto Healing

No Human Intervention





Demo





## *Pillars of Self Heal Automation*

- **Strong Knowledge Base**
  - Manual Build
  - Automatic build using Machine Learning
  - Machine Understandable Fixes
- **Fully mapped CMDB**
  - Effective Correlation
  - Situation Analysis
- **Technology & Process**
  - Configuration Management
  - Monitoring & Correlation
  - Process Standardization
- **Effective Handover**
  - Not everything can be Self-Healed. Expert's support is still required to Solve Unknown Problems

# Benefits & Possible Use cases

No Human Intervention

Improved MTTR

Improved Customer Satisfaction



On Demand Link Addition to Ether Channel



Dynamic VNF Scaling based on CPU & Memory Usage



Dynamic Route Addition/Change based on the Load



Automatically Switch Between Active to Standby Devices and Vice-Versa



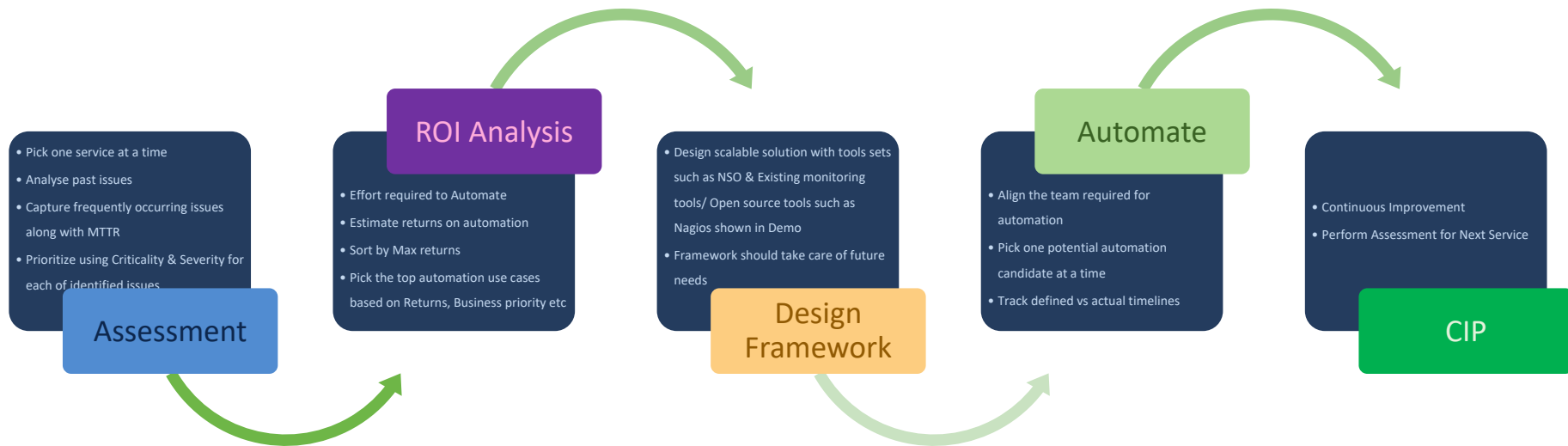
Restart any service within Switch/Router once pre-conditions are met




Perform Automatic Checks and provide a report of results for Unknown problems



# Approach for Successful Automation Journey



- 
- Have more questions?
  - Want to know more ?





Got Feedback?



<http://cs.co/autoheal>



The bridge to possible