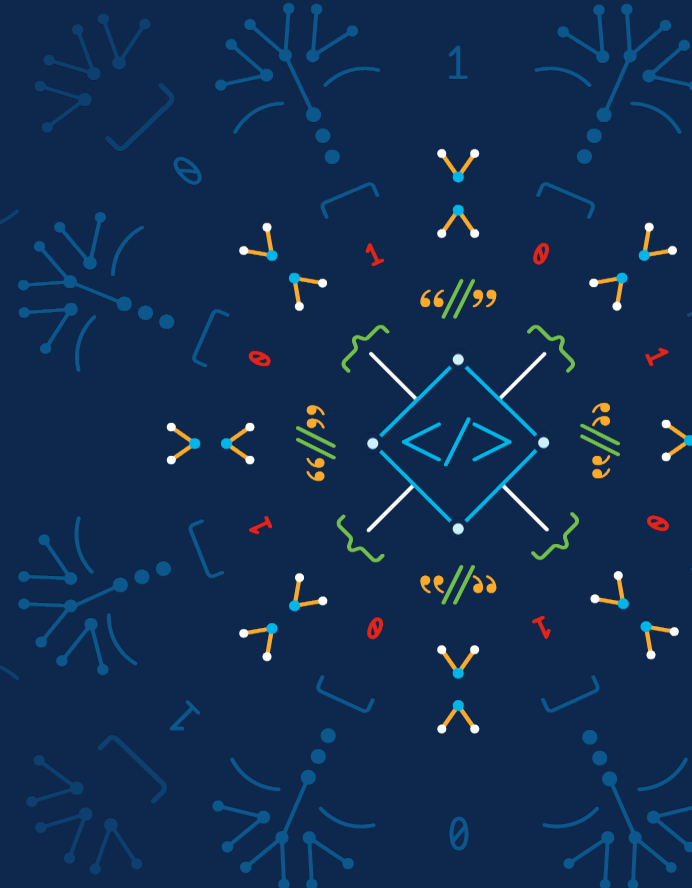


NSO Generic MOP Configurator

Ad-Hoc Standardization

Girisha Bukanakere
Software Technical Leader
11th May 2022

Karthik Raja
Software Architect



NSO service is a process of standardizing network service CRUD operations. In real world, its not feasible to create NSO standard service all the time.

“So what starts is ad hoc and you never know where it’s going to lead, so it’s important to keep an open mind about those things.”

Evan Parker

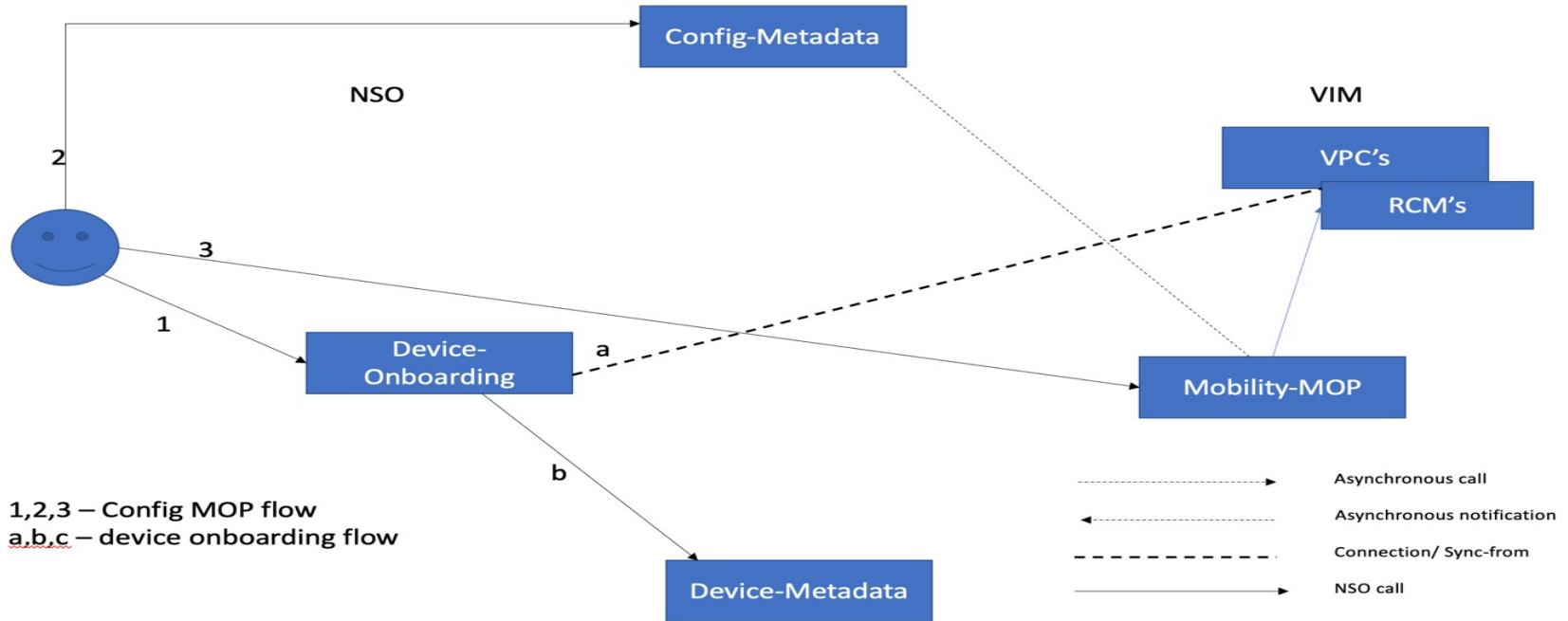
How it is different from NSO native-config-load or rload ?

- Native-config-load and rload has difficult rollback mechanism.
- No selective rollbacks on files or devices
- No control on device state. What happens if one of the device has issues ?
- Templated native config files can apply multiple devices
- No track of keeping the historical configuration

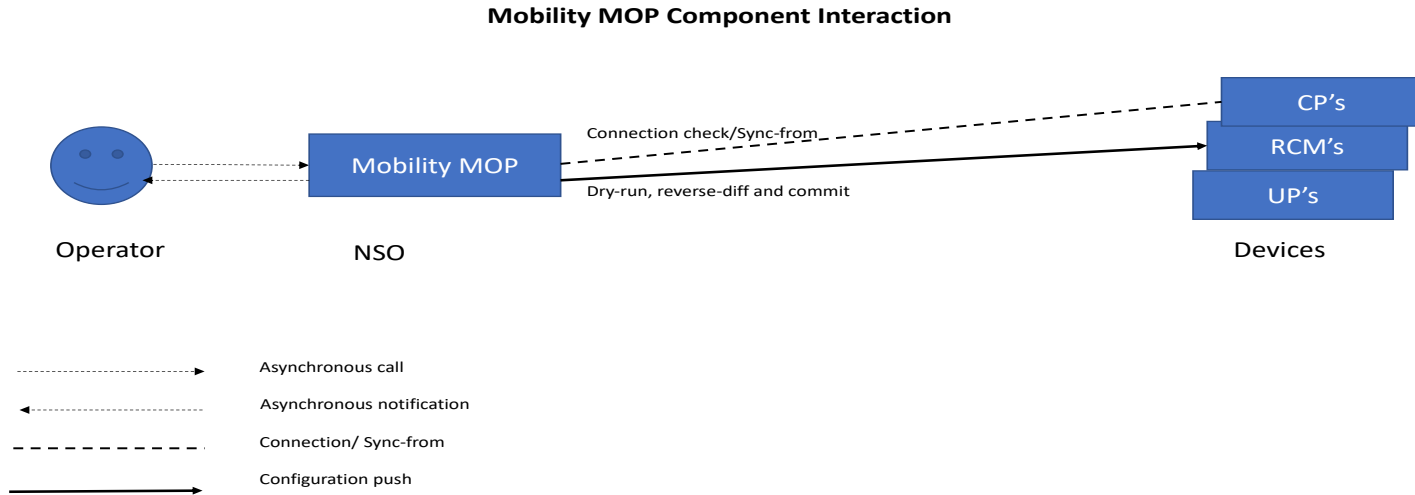
Generic configuration MOP is a first class NSO action to standardize everything on config load

- Support any type of NSO devices (CLI, Netconf..)
- Native config load is operator friendly sometimes
- Selective rollbacks and complex combinations are supported.
- Device state and configuration failures are isolated

Configurator MOP flow



Configurator Operation flow



Make your own
dance 😊



Quick Demo



Thank you



The bridge to possible