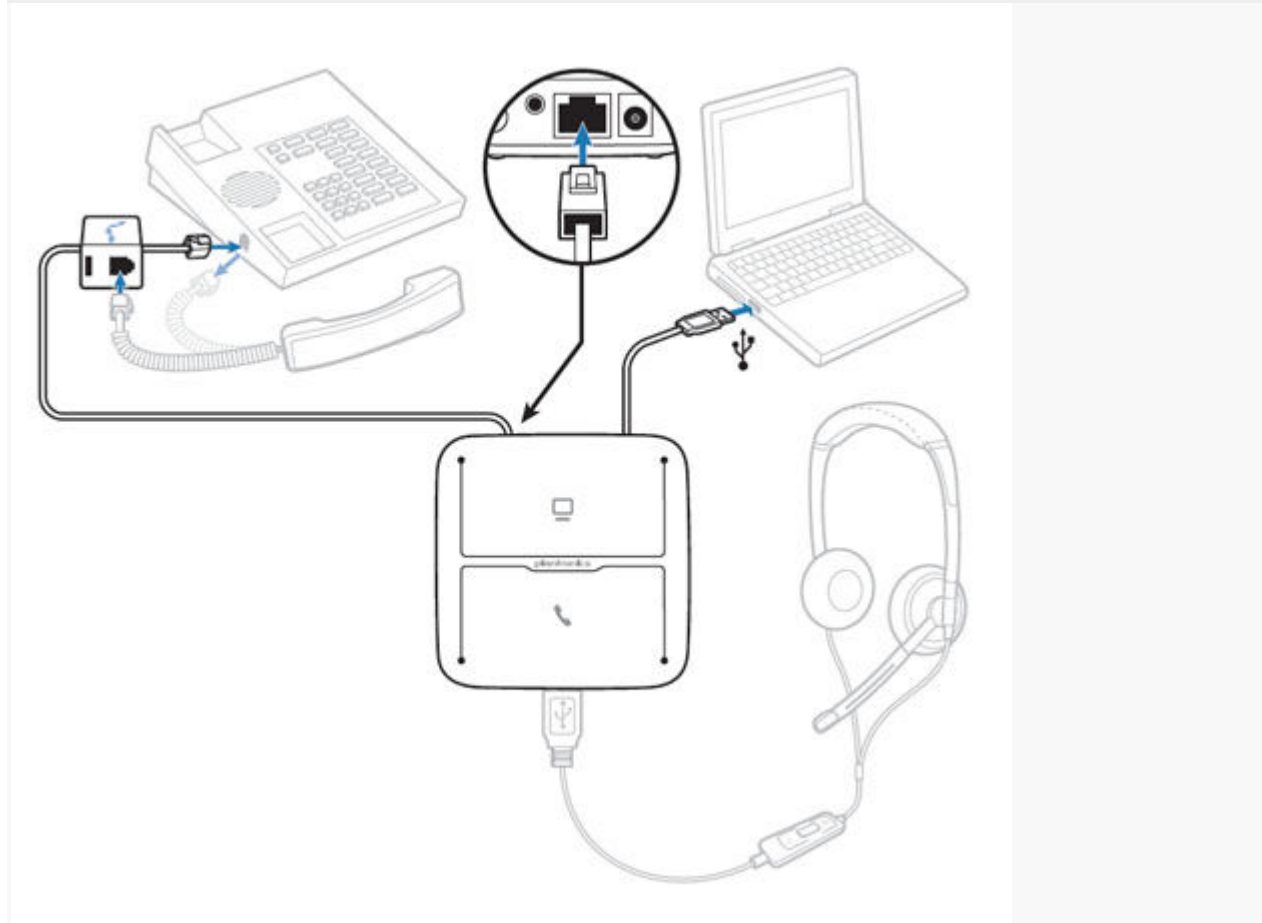
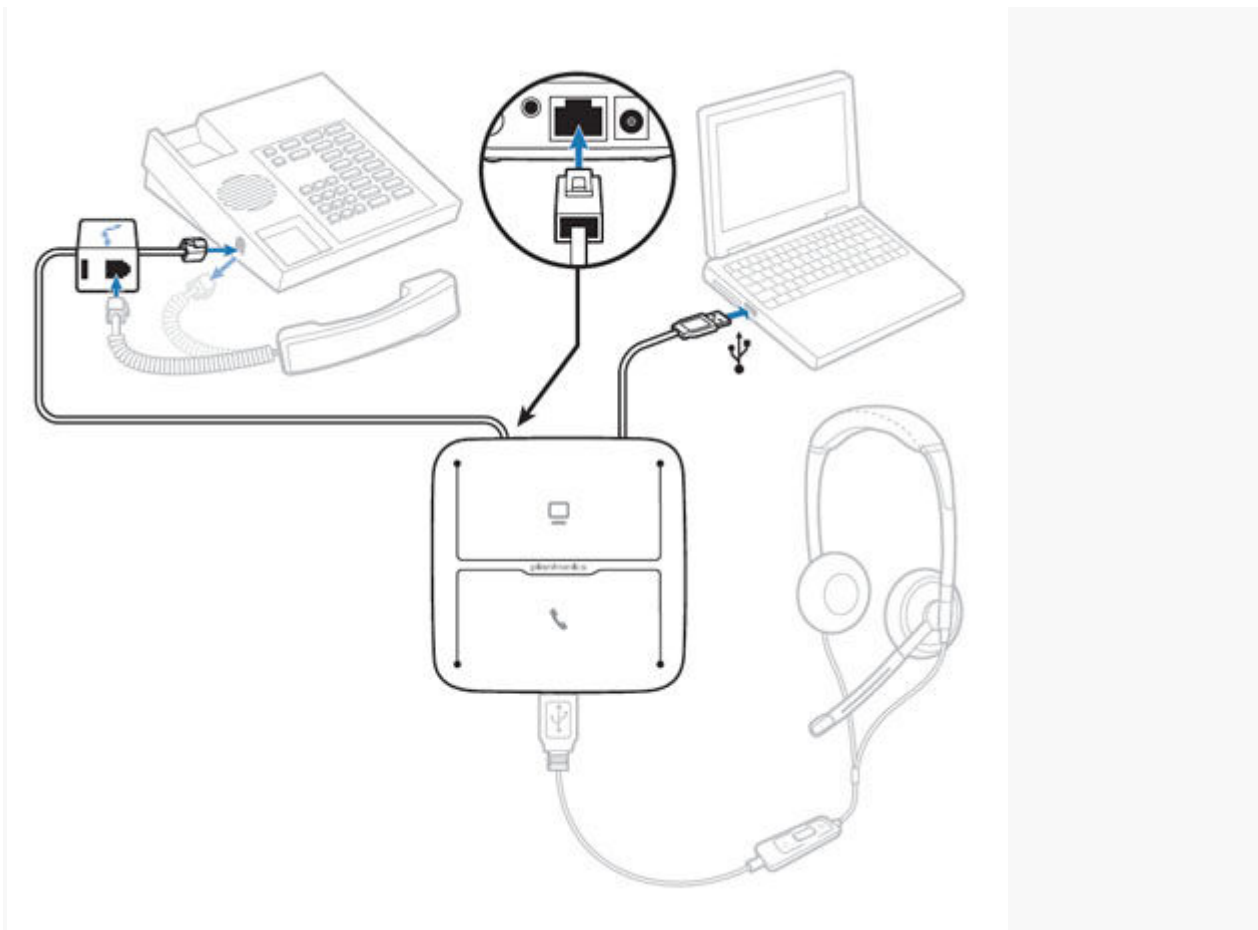


To use the MDA200 with your desk phone and computer:



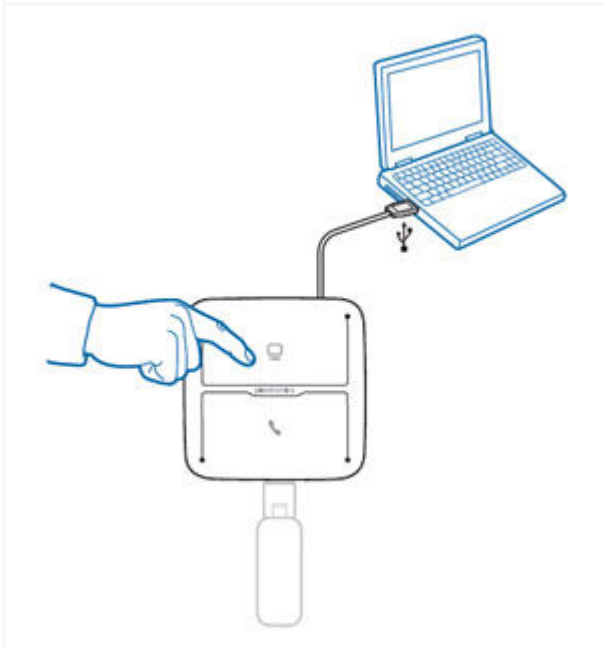
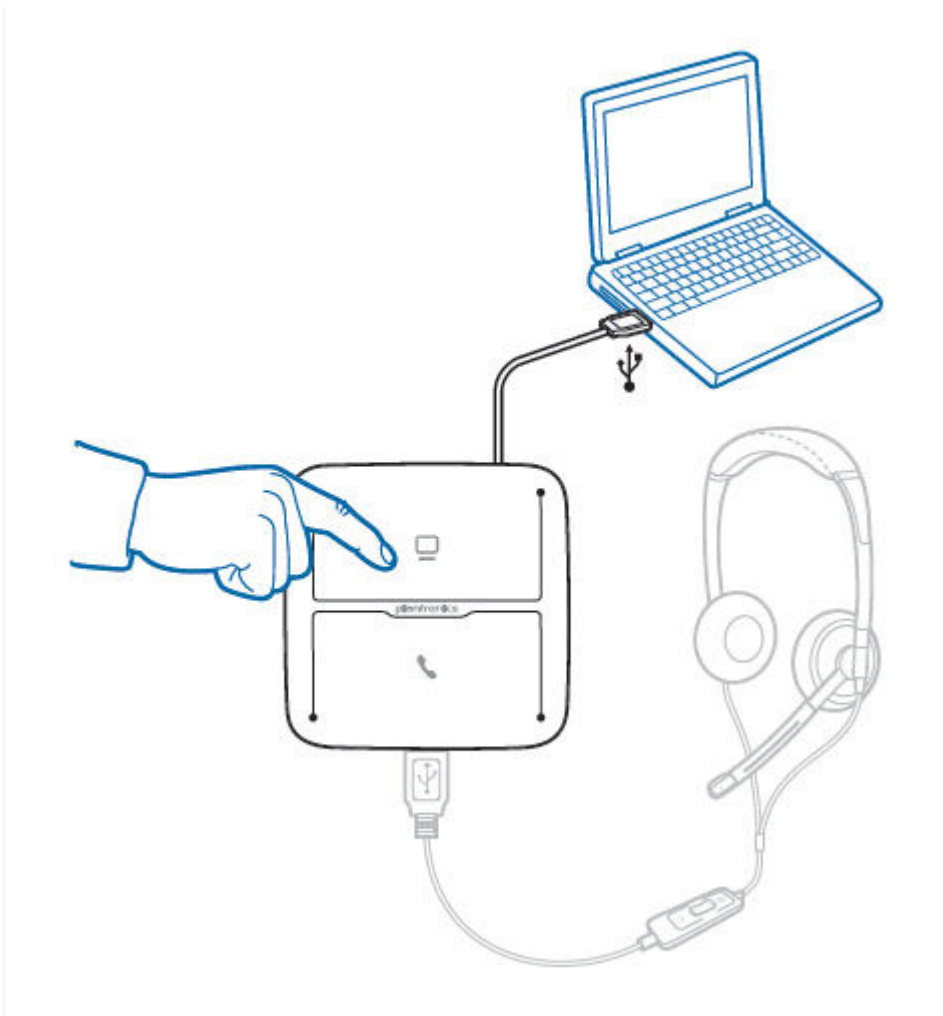
1. Plug the MDA200 into the USB port on your computer.
2. Plug the large (RJ45) end of the telephone connection cable into the MDA200.
3. Plug the small (RJ9) end of the telephone connection cable into your telephone.
4. Plug your Plantronics supported USB corded headset or wireless USB headset adapter to the MDA200 headset port.

To use the MDA200 with your desk phone only:



1. Plug the MDA200 into the USB port on your computer OR plug the AC power supply (purchased separately) into the wall.
2. Unplug your telephone's handset.
3. Plug the large (RJ45) end of the telephone connection cable into the MDA200.
4. Plug the small (RJ9) end of the telephone connection cable into the handset port of your telephone.
5. Plug your telephone's handset into the handset port on the MDA200's telephone connection cable.
6. Plug your Plantronics supported USB corded headset or wireless USB headset adapter to the MDA200 headset port.

To use the MDA200 with your computer only:



1. Plug the MDA200 into a USB port on your computer.

2. Plug your Plantronics supported USB corded headset or wireless USB headset adapter to the MDA200 headset port.

NOTE: Your headset will continue to function as if it were connected directly to the computer.