

Network Policy Server

File Action View Help

NP5 (Local)

- RADIUS Clients and Servers
- Policies
 - Connection Request Policies
 - Network Policies
 - Health Policies
- Network Access Protection
- Accounting
- Templates Management

Connection Request Policies

Connection request policies allow you to designate whether connection requests are processed locally or forwarded to remote RADIUS servers. For NAP VPN or 802.1X, you must configure a connection request policy.

Policy Name	Status	Processing Order	Source
Connection Request Policy MAB	Enabled	5	Unspecified

Connection Request Policy MAB

Conditions - If the following conditions are met:

Condition	Value
NAS Port Type	Ethernet
NAS IPv4 Address	[REDACTED]

Network Policies

- Health Policies
- Network Access Protection
- Accounting
- Templates Management

Network Policy (MAB)

Policy Name	Status	Processing Order	Access Type	Source
Network Policy (MAB)	Enabled	7	Grant Access	Unspecified

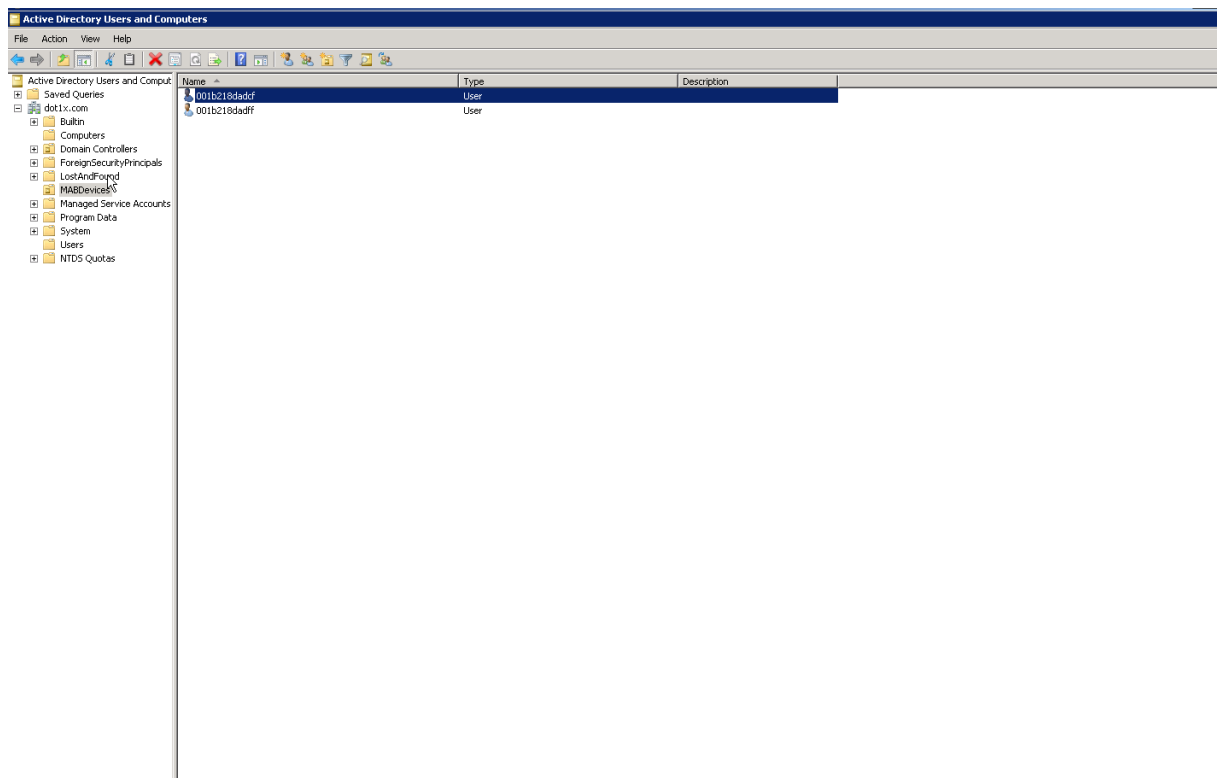
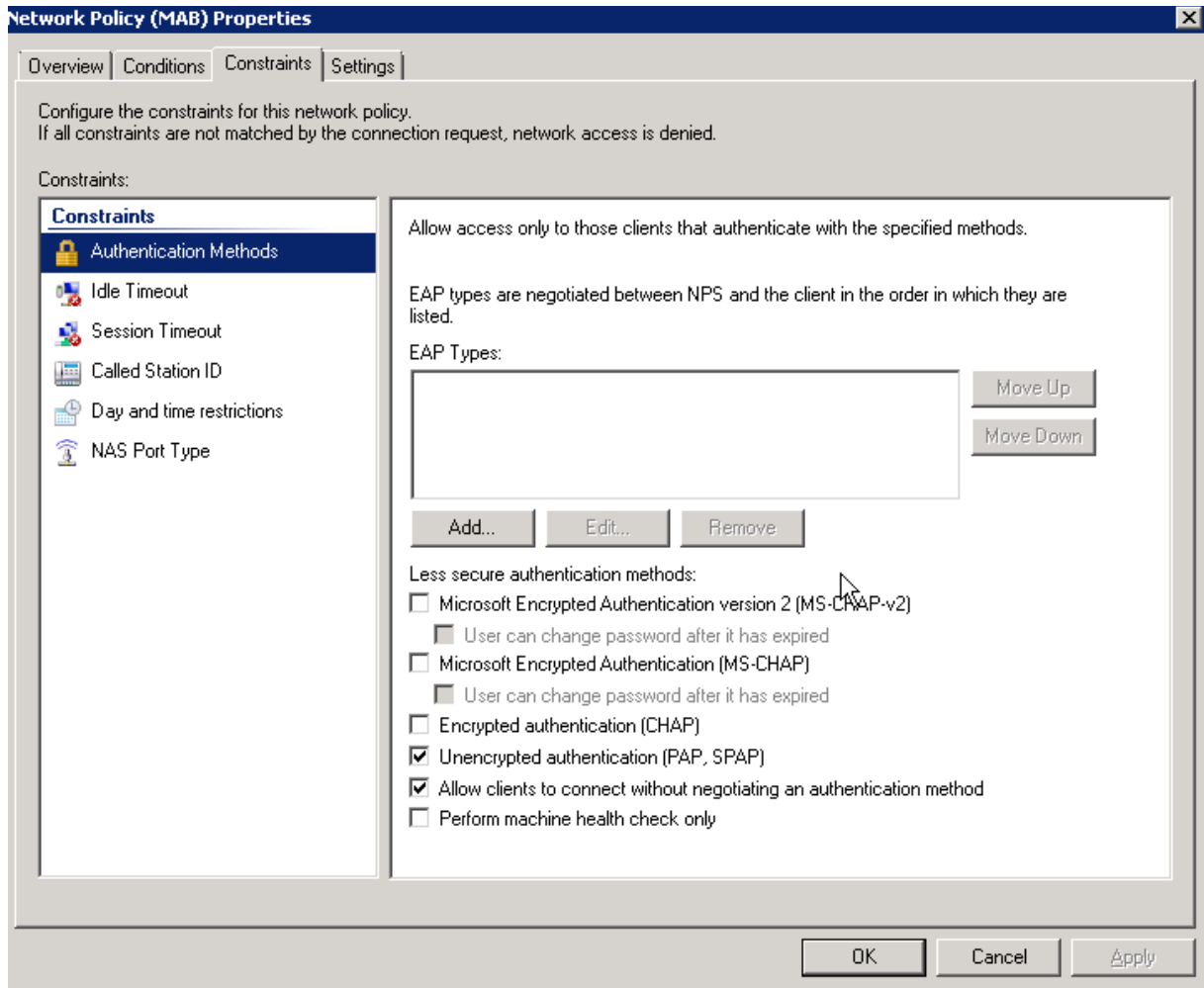
Network Policy (MAB)

Conditions - If the following conditions are met:

Condition	Value
NAS Port Type	Ethernet

Settings - Then the following settings are applied:

Setting	Value
Extended State	<Blank>
Access Permission	Grant Access
Authentication Method	Unencrypted authentication (PAP, SPAP) OR Allow Unauthenticated Access
NAP Enforcement	Allow full network access
Update Noncompliant Clients	True
Framed-Protocol	PPP
Service-Type	Framed
Tunnel-Medium-Type	802 (includes all 802 media plus Ethernet canonical format)
Tunnel-Preference	0
Tunnel-IPv4-Group-ID	default
Tunnel-Type	Virtual LANs (VLAN)



Active Directory Users and Computers

File Action View Help

Active Directory Users and Computers

- Saved Queries
- dot1x.com
 - Builtin
 - Computers
 - Domain Controllers
 - ForeignSecurityPrincipals
 - LostAndFound
 - MSExchange
 - Managed Service Accounts
 - Program Data
 - System
 - Users
 - NTDS Quotas

Name	Type	Description
001b218dadcf	User	
001b218dadff	User	

001b218dadcf Properties

Published Certificates | Member Of | Password Replication | Dialin | Object

Security | Environment | Sessions

Remote control | Remote Desktop Services Profile

Personal/Virtual Desktop | COM+ | Attribute Editor

General | Address | Account | Profile | Telephones | Organization

User logon name:
001b218dadcf @dot1x.com

User logon name (pre-Windows 2000):
DOT1X\ 001b218dadcf

Logon Hours... Log On To...

Unlock account

Account options:

- User must change password at next logon
- User cannot change password
- Password never expires
- Store password using reversible encryption

Account expires:

- Never
- End of: Dienstag, 8. November 2011

OK Cancel Apply Help