

Table of Contents

<u>How to Configure a Cache Engine for Transparent Caching Using WCCP</u>	1
<u>Introduction</u>	1
<u>Prerequisites</u>	1
<u>Requirements</u>	1
<u>Components Used</u>	1
<u>Conventions</u>	1
<u>Configure</u>	2
<u>Network Diagram</u>	2
<u>Configurations</u>	2
<u>Verify</u>	4
<u>Cache Engine debug and show Commands</u>	4
<u>Router debug and show Commands</u>	4
<u>Command Summary</u>	4
<u>Troubleshoot</u>	4
<u>NetPro Discussion Forums – Featured Conversations</u>	5
<u>Related Information</u>	5

How to Configure a Cache Engine for Transparent Caching Using WCCP

Introduction

Prerequisites

- Requirements
- Components Used
- Conventions

Configure

- Network Diagram
- Configurations

Verify

- Cache Engine debug and show Commands
- Router debug and show Commands
- Command Summary

Troubleshoot

NetPro Discussion Forums – Featured Conversations

Related Information

Introduction

This document describes how to configure the Cisco Cache Engine for transparent caching using the Web Cache Coordination Protocol (WCCP).

Prerequisites

Requirements

There are no specific requirements for this document.

Components Used

The information in this document is based on these software and hardware versions:

- Cisco Cache Engine 560
- Cisco Application and Content Networking System software (ACNS) release 5.1
- Cisco 3600 Router running Cisco IOS® Software Release 12.2(17)

The information in this document was created from the devices in a specific lab environment. All of the devices used in this document started with a cleared (default) configuration. If your network is live, make sure that you understand the potential impact of any command.

Conventions

For more information on document conventions, refer to the Cisco Technical Tips Conventions.

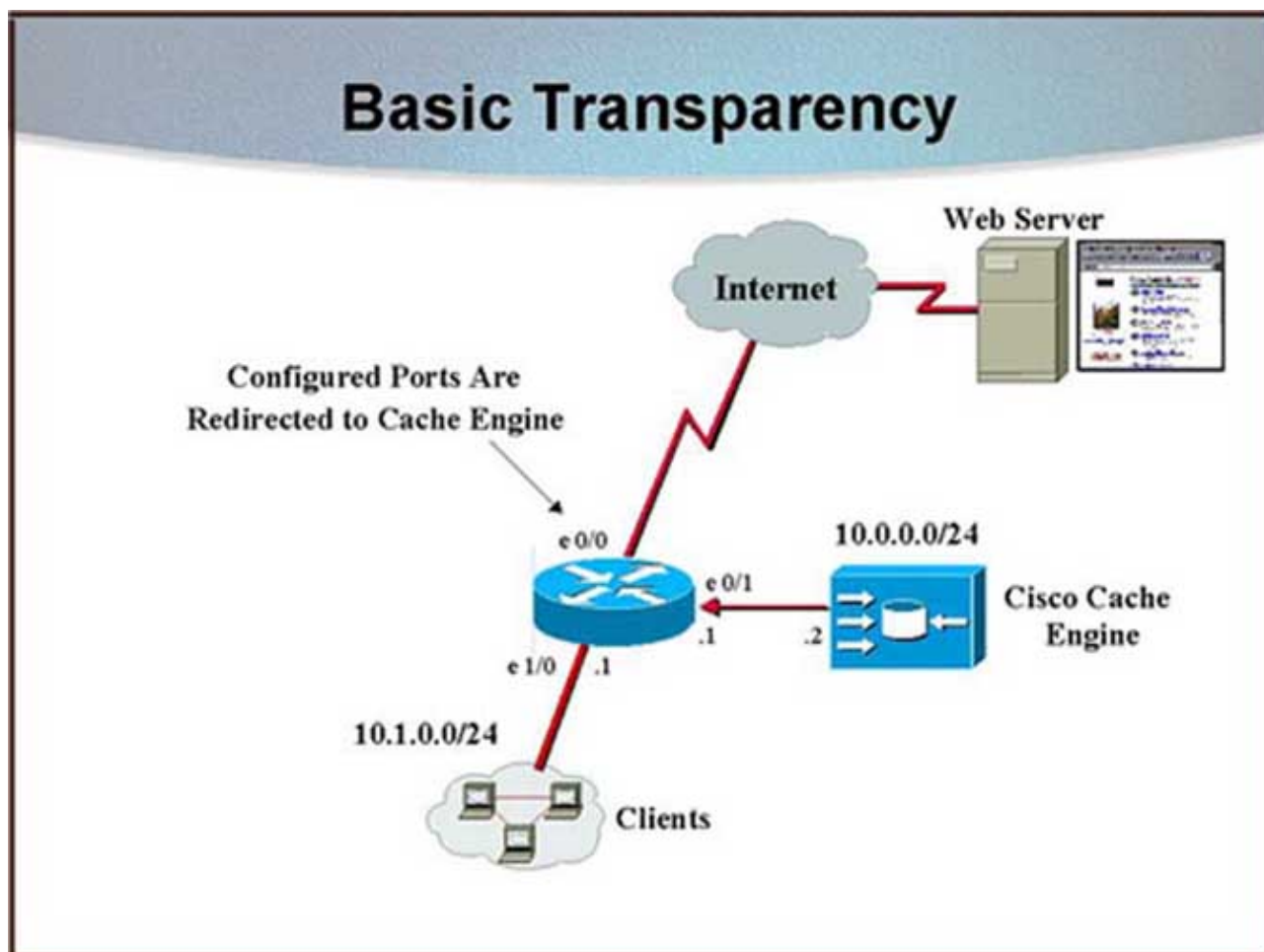
Configure

In this section, you are presented with the information to configure the features described in this document.

Note: To find additional information on the commands used in this document, use the Command Lookup Tool (registered customers only) .

Network Diagram

This document uses this network setup:



Configurations

This document uses these configurations:

- Cache / Content Engine
- Router

Cache / Content Engine
<pre>ce-560# wr t ! ACNS version 5.1.9 ! hostname ce560</pre>

```

!
ip domain-name cisco.com
!
interface FastEthernet 0/0
 ip address 10.0.0.2 255.255.255.0
 exit
interface FastEthernet 0/1
 shutdown
 exit
!
ip default-gateway 10.0.0.1
!
primary-interface FastEthernet 0/0
!
ip name-server 10.66.86.18
!
wccp router-list 1 10.0.0.1
wccp web-cache router-list-num 1
wccp version 2
!
transaction-logs enable
!
username admin password 1 bVmDmMMmZAPjY
username admin privilege 15
!
authentication login local enable primary
authentication configuration local enable primary
!
! End of ACNS configuration

```

Router

```

c3640#wr t
Building configuration...
Current configuration : 1905 bytes
!
! NVRAM config last updated at 11:30:04 AEST Wed Aug 4 2004
!
version 12.2
no service password-encryption
!
hostname c3640
!
enable password cisco
!
clock timezone AEST 10
ip subnet-zero
ip wccp web-cache
ip cef
!
interface Ethernet0/0
 ip address 10.1.0.1 255.255.255.0
 ip wccp web-cache redirect in
 full-duplex
!
interface Ethernet0/1
 ip address 10.0.0.1 255.255.255.0
 full-duplex
!
ip classless
ip route 0.0.0.0 0.0.0.0 10.0.0.254
!
line con 0

```

```
line aux 0
line vty 0 4
  password cisco
  login
!
end
```

Verify

This section provides information you can use to confirm your configuration is working properly.

Note: Before issuing **debug** commands, refer to Important Information on Debug Commands.

Cache Engine debug and show Commands

- **show wccp cache** displays WCCP cache engine information.
- **show wccp flows** displays WCCP packet flows.
- **show wccp routers** displays the WCCP router list.
- **show wccp services** displays the WCCP services that are configured.
- **show wccp slowstart** displays the WCCP slow start.
- **show wccp status** displays the WCCP running status.
- **show statistics http savings** displays HTTP savings statistics.
- **debug wccp all** turns on all debugging for WCCP.
- **debug wccp events** debugs WCCP events.
- **debug wccp packets** debugs WCCP packet-related information.

Router debug and show Commands

- **show ip wccp web-cache detail** displays cache engine and WCCP router statistics for a particular service group.
- **show ip wccp web-cache view** displays service group view information.
- **debug ip wccp events** debugs WCCP events.
- **debug ip wccp packets** debugs WCCP packet-related information.

Command Summary

These are the cache engine commands that were used in this configuration:

- **wccp version {1 | 2}**
- **wccp router-list *number ip-address***
- **wccp web-cache router-list-num *number***

These are the router commands that were used in this configuration:

- **ip wccp {web-cache | *service-number*}**
- **ip wccp {web-cache | *service-number*} redirect out**

Troubleshoot

There is currently no specific troubleshooting information available for this configuration.

NetPro Discussion Forums – Featured Conversations

Networking Professionals Connection is a forum for networking professionals to share questions, suggestions, and information about networking solutions, products, and technologies. The featured links are some of the most recent conversations available in this technology.

NetPro Discussion Forums – Featured Conversations for CDN

Emerging Technologies: Content Networking

Related Information

- [Cisco Cache Software](#)
 - [WCCP Enhancements](#)
 - [Cache Engine 500 Series Software Support](#)
 - [Cisco Cache Software Support](#)
 - [Technical Support – Cisco Systems](#)
-

All contents are Copyright © 1992–2004 Cisco Systems, Inc. All rights reserved. Important Notices and Privacy Statement.