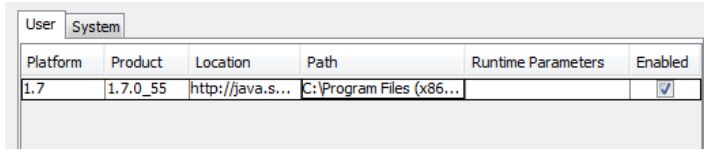


How to get Cisco ASDM to work with Java 1.7

Several people is complaining that they cannot access Cisco ASDM for ASA when they have Java v1.7

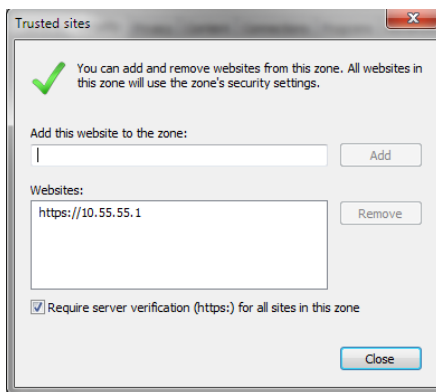
I have therefore put together this user guide to get this working.

Current installed Java on the computer.



Platform	Product	Location	Path	Runtime Parameters	Enabled
1.7	1.7.0_55	http://java.s...	C:\Program Files (x86...		<input checked="" type="checkbox"/>

1. Start IE explorer and add your ASA IP to Trusted sites. Why, to be able to download the certificate for installation in Java. If you do not do this then the copy to file will not be available under details on your certificate. Step 7.



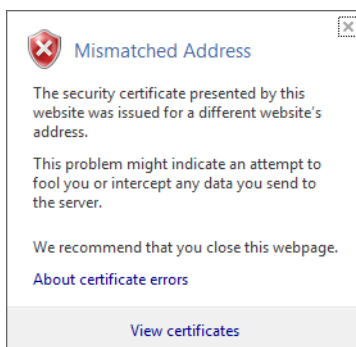
2. Start IE and brows to your ASA by <https://yourASA>
3. Click on "Continue to this website (not recommended)"



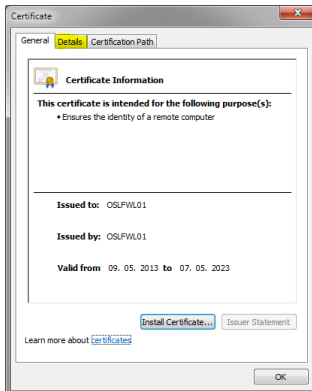
4. Click on Certificate error.



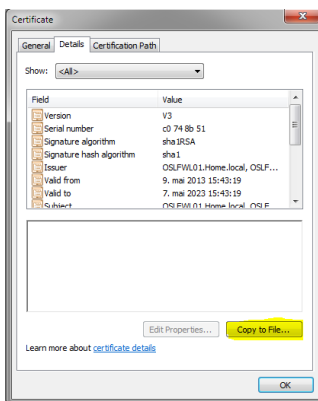
5. Click on View certificate



6. Click on Detail



7. Click on Copy to File



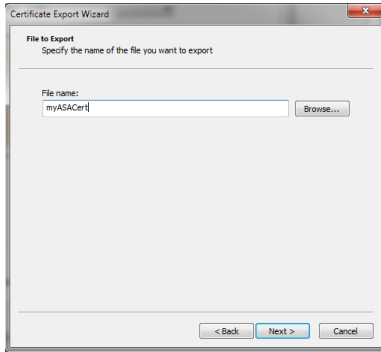
8. Click on Next



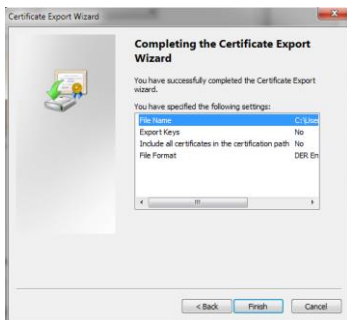
9. Click on Next



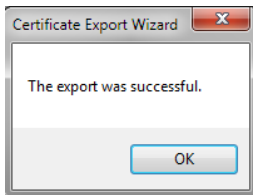
10. Click on Next



11. Name your file and click Next



12. Click Finish.



Now you are ready to import the certificate to Java Manage Certificates.

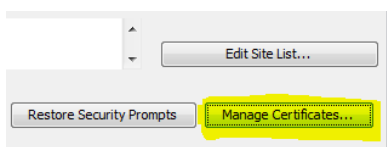
13. Start Java in your Control Panel.



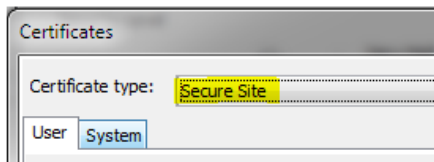
14. Go to Security



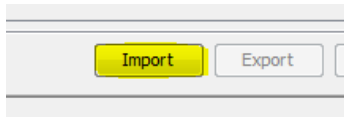
15. Manage Certificates...



16. Select Secure Sites



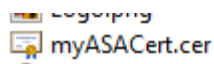
17. Select Import



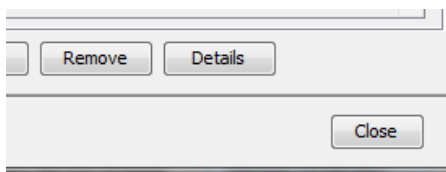
18. Remember to select All Files



19. Select Your ASA CER file.

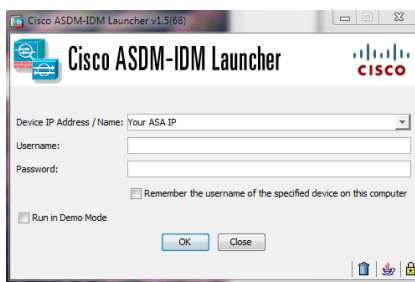


20. Select Close.



21. Select OK.

22. Start Cisco ASDM-IDM Launcher.



Now you will be able to work with the ASDM on Java 1.7



Sincerely
Ole H Røtterud
ole@sanapharma.no