



# Cisco 思科演示云dCloud系列培训

如何使用dCloud 来做Cisco ISE 2.3 instant demo的演示



# dCloud – 思科的演示云



**思科演示云将其产品解决方案架构的  
软件和硬件虚拟化，让思科与合作伙  
伴的销售团队在任何地方，任何时间  
都可以做产品演示。**

# 什么是Cisco dCloud?

## 服务

思科, 合作伙伴, 客户

自服务, Managed Service

Instant(实时), Scheduled(预约), 企划书

Demo, Lab, 沙盘, POV, Events

可定制化, 保持, 共享

创建content

## 平台

5 个数据中心

云, 基础架构, 自动化, 用户 UI

管理员Admin, 开发工具

Cisco on Cisco

## 内容

超过250 offerings, 所有的架构

预配置有文档提供

虚拟机, 硬件, 用户设备, licensing

认证, 可信

可选的终端

## Operations 和技术支持

24x5\* chat, email, web, phone

Self help, event support, metrics

# Cisco dCloud – 使用小技巧



- **请随时给我们反馈**
- **共享给你的客户**
- 定制化保存
- 和技术支持联系来Extend sessions
- 超过5个sessions可使用Event scheduling
- 多种 RDP连接的方式
- 将本地应用和云服务加入demo
- 使用多个数据中心来 capacity/redundancy

# dCloud 满足你的要求

<http://dcloud.cisco.com>

## As Easy As...



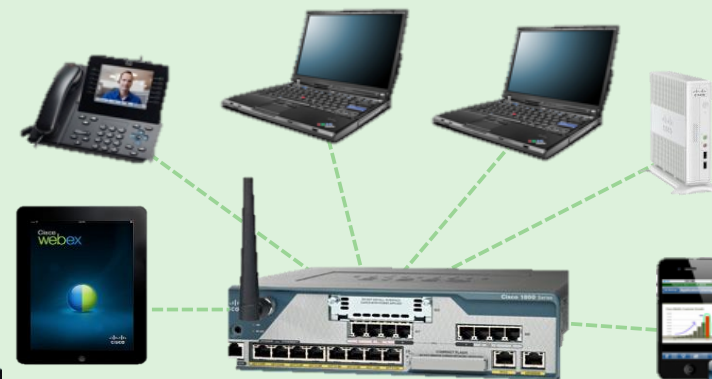
- 思科员工和合作伙伴
- 完整脚本
- 定制化, 本地化, 共享
- 可选的终端 (BYOD)
- 可使用你自己的设备



dCloud  
Data Centers

US East  
US West  
EMEAR  
APJ  
GC

## As Complete As...



- Virtual desktops
- Local clients on laptops
- Room based configuration
- 可添加你本地的服务器
- 多种使用案例

# 如何部署ISE

思科 ISE 拥有灵活且高度可扩展的许可模式，可根据您期望的结果进行调整。

- 选择一个部署模式

从丰富的部署选项中进行选择：AAA, 802.1X, 访客；自带设备 (BYOD), pxGrid, 移动设备管理等等。

- 选择终端数量

ISE 每个部署可扩展最多 50 万个并发会话和最多 150 万个终端。堪称业界最佳。

- 选择设备

我们的物理和虚拟设备均基于思科 UCS C220 服务器，并配置为支持 ISE。









- 获取部署服务

快速完成部署并投入运行，并且不会造成任何中断。我们的安全规划与构建服务将为您提供高级支持。

# About This Solution

Cisco's Identity Services Engine (ISE) simplifies the delivery of a single policy for wired, wireless and VPN secure access control multivendor networks. With far-reaching, intelligent sensor and profiling capabilities, Cisco ISE can reach deep into the network to deliver superior visibility into who and what is accessing enterprise networks. ISE enables you to see who and what is on your network, and to share across network solutions while stopping and containing threats by dynamically controlling network access.

ISE can be used to provide the following capabilities for customers:

	<b>Asset Visibility</b>	Cisco ISE can reach deep into the network to deliver superior visibility into who and what is accessing resources.
	<b>Access Control</b>	Consistent access control across wired, wireless and VPN Networks. 802.1X, MAC, Web Authentication and Easy connect for admission control.
	<b>Guest Access</b>	Fully customizable branded mobile and desktop guest portals, with dynamic visual workflows to easily manage guest user experience.
	<b>BYOD Access</b>	Simplified BYOD management with built-in CA and 3rd party MDM integration for on boarding and self-service of personal mobile devices
	<b>Segmentation</b>	Topology independent Software-defined segmentation policy to contain network threats by using Cisco TrustSec technology.
	<b>Context Exchange</b>	Context sharing with partner eco-system to improve their overall efficacy and accelerate time to containment of network threats.
	<b>Threat Control</b>	Protection against threats across the attack continuum, before, during and after an attack. Reduce time-to-detection from days to hours.
	<b>Device Admin</b>	Cisco ISE supports device administration using the TACACS+ security protocol to control and audit the configuration of network devices

# Demo Scenarios

- [Scenario 1. Network Visibility](#)
- [Scenario 2. Search for a User or Endpoint](#)
- [Scenario 3. What are the Unknown Endpoints on my Network?](#)
- [Scenario 4. View Live Authentications](#)
- [Scenario 5. Network Device Management](#)
- [Scenario 6. ISE Authentication and Authorization Policy](#)
- [Scenario 7. Scalable Group Tags \(SGTs\) and Software Defined Access \(SDA\)](#)
- [Summary](#)