

Step by Step Configuring ShrewVPN with RV042/RV042G/RV082/RV016

Hardware version : V3

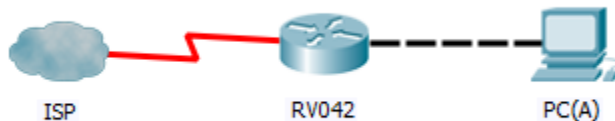
Firmware version : 4.2.3.03

Link to download latest RV0xx Firmware :

<https://software.cisco.com/download/release.html?mdfid=282414010&softwareid=282465789&release=4.2.3.03&relind=AVAILABLE&rellifecycle=&reltype=latest>

Link to download latest ShrewSoft : <https://www.shrew.net/download/vpn>

Topology :



	RV042	PC(A)
IP address	192.168.2.1	192.168.2.100
Subnet Mask	255.255.255.0	255.255.255.0
Gateway		192.168.2.1

NB: all the configuration steps is based on topology above when the Public WAN IP is configured on RV042, if you have on the WAN interface a private IP and you have the RV042 connected to another Gateway, please ensure that you have Port 500,4500 (UDP) redirected to RV042.

RV042 Configuration --> Under VPN --> Client to Gateway

Client To Gateway

Add a New Group VPN

Tunnel Group VPN

Group No. : 1

Tunnel Name : ShrewSOFT **1**

Interface : WAN1 **2**

Enable : **3**

Local Group Setup

Local Security Group Type : Subnet **4**

IP Address : 192.168.2.0 **5**

Subnet Mask : 255.255.255.0 **6**

Remote Client Setup

Remote Client : Domain Name(FQDN) **7**

Domain Name : remote.com **8**

IPSec Setup

Keying Mode : IKE with Preshared key

Phase 1 DH Group : Group 2 - 1024 bit **9**

Phase 1 Encryption : AES-256 **10**

Phase 1 Authentication : SHA1 **11**

Phase 1 SA Life Time : 28800 seconds **12**

IPSec Setup

Keying Mode : IKE with Preshared key

Phase 1 DH Group : Group 2 - 1024 bit **13**

Phase 1 Encryption : AES-256 **14**

Phase 1 Authentication : SHA1 **15**

Phase 1 SA Life Time : 28800 seconds **16**

Perfect Forward Secrecy : **17**

Phase 2 DH Group : Group 2 - 1024 bit **18**

Phase 2 Encryption : AES-256 **19**

Phase 2 Authentication : SHA1 **20**

Phase 2 SA Life Time : 3600 seconds **21**

Preshared Key : ciscotest **22**

Minimum Preshared Key Complexity : Enable **23**

Preshared Key Strength Meter :

Advanced - **24**

Advanced

Aggressive Mode

Compress (Support IP Payload Compression Protocol(IPComp))

Keep-Alive

AH Hash Algorithm MD5

NetBIOS Broadcast

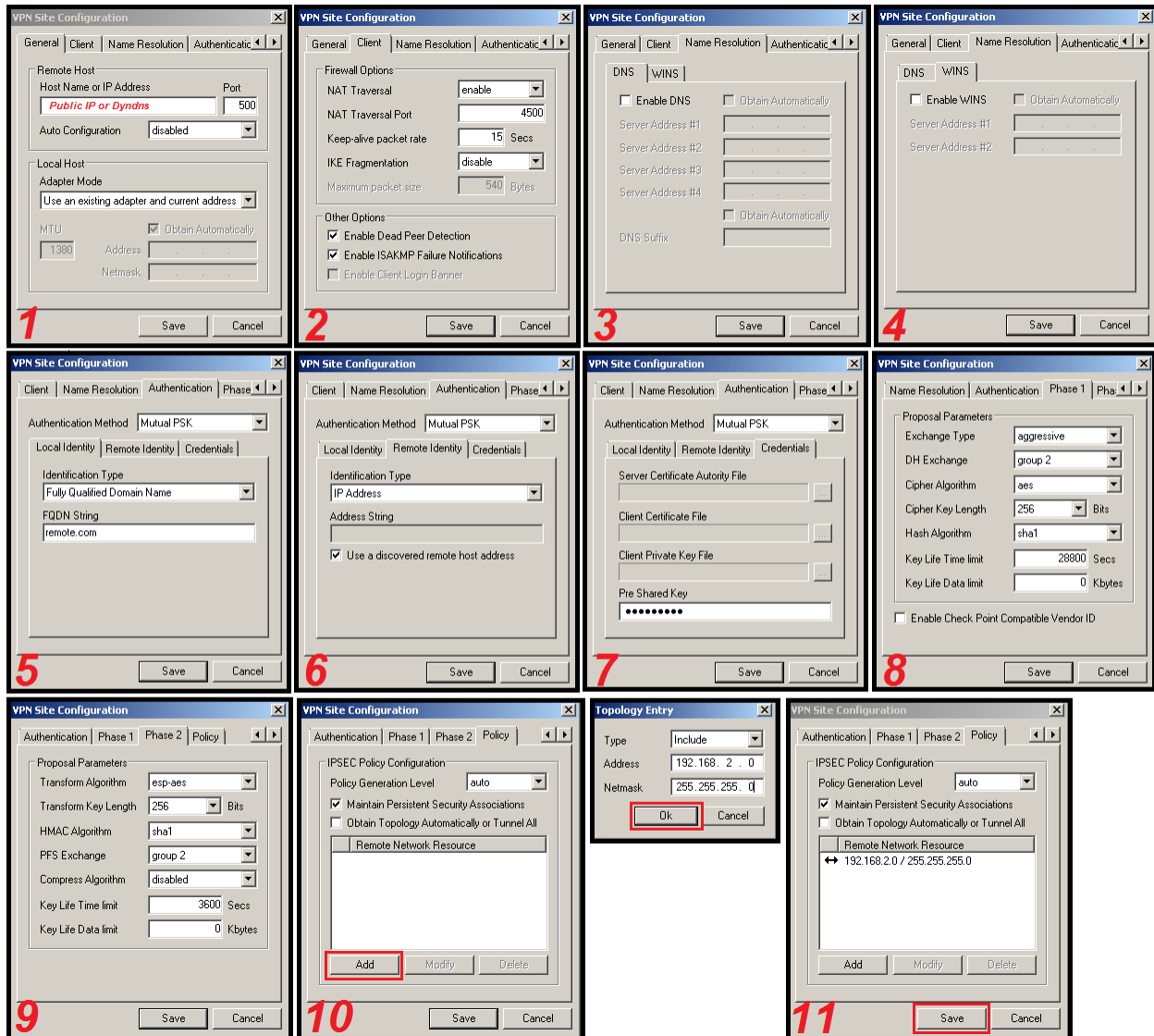
NAT Traversal

Save Cancel

NB : You can follow all the configuration in the screenshot , only need to change the Local Group Setup with your Local Subnet Address

NB : By Clicking in "Advanced+" another menu will appear "Advanced"
All the VPN client should be in Aggressive mode that's why is gray out and we cannot uncheck the option Aggressive mode
NAT Traversal should be enable because the remote client can be with Public IP or behind a NAT

ShrewVPN Configuration

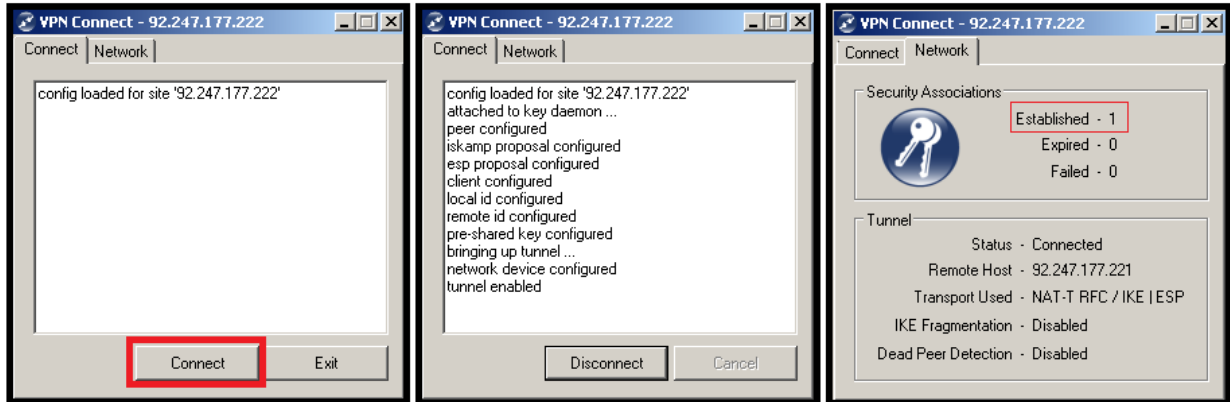


NB : You can follow all the screenshots for ShrewSoft configuration

NB : (11) 192.168.2.0 should be the local of RV042 where we need to have access to.

NB : (1) Hostname or IP address is the Public IP address or DynDNS configured in WAN interface of RV042, if WAN of RV042 is with private IP so should be the Public IP where is configured in the Gateway
 Adapter Mode : Usually is using existing adapter , we can use Virtual adapter if the remote client and the local network have the same network , in this case we can configure a virtual IP

Connecting Shrew VPN to RV042



Verification From RV042 under VPN --> Summary

Summary



Group1 list - Google Chrome

~~https://192.168.2.1/group_list1.htm~~

Group VPN Connection List: Refresh Close

Group Name	IP address	Connection Time (seconds)
ShrewSOFT	<i>Should be public ip of the remote client</i>	23

Group VPN Status

Group Name	Connected Tunnels	Phase2 Enc/Auth/Grp	Local Group	Remote Client	Remote Client Status	Tunnel Test	Config.
ShrewSOFT	1	AES/SHA1/2	192.168.2.0 255.255.255.0	remote.com	Detail List	Disconnect	 

Add