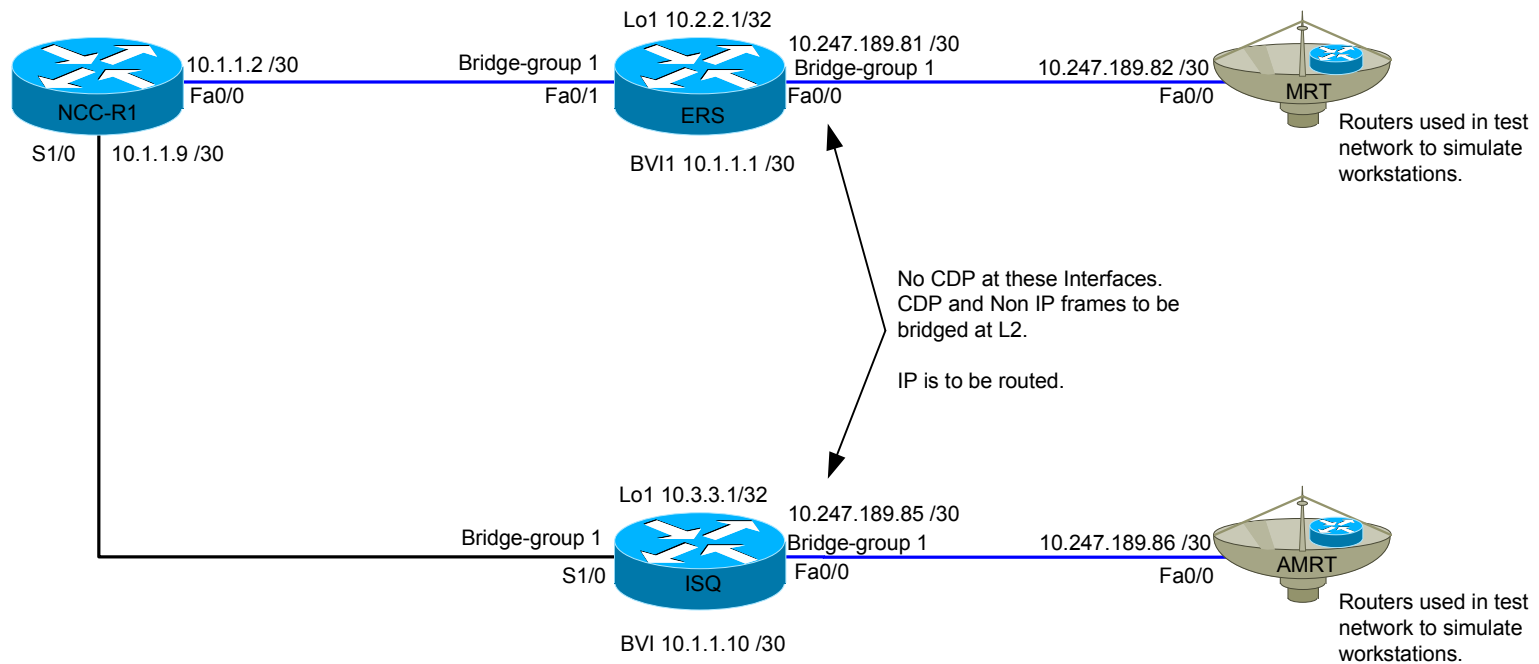


# Linkway Test Network



# ERS Config

```
!  
version 12.4  
service timestamps debug datetime msec  
service timestamps log datetime msec  
no service password-encryption  
!  
hostname ERS  
!  
boot-start-marker  
boot-end-marker  
!  
!no aaa new-model  
!  
resource policy  
!  
memory-size iomem 5  
ip subnet-zero  
ip cef  
!  
bridge irb  
!  
interface Loopback0  
 ip address 10.2.2.1 255.255.255.255  
!  
interface FastEthernet0/0  
 description To MRT  
 ip address 10.247.189.81 255.255.255.252  
 duplex auto  
 speed auto  
 no cdp enable  
 bridge-group 1  
!  
interface FastEthernet0/1  
 description To NCC-R2  
 no ip address  
 duplex auto  
 speed auto  
 bridge-group 1  
!  
!  
interface BVI1  
 ip address 10.1.1.1 255.255.255.252  
!  
router rip  
 version 2  
 redistribute connected  
 passive-interface Loopback0  
 network 10.0.0.0  
 no auto-summary  
!  
ip classless  
!  
ip http server  
no ip http secure-server  
!  
!  
control-plane  
!  
bridge 1 protocol ieee  
bridge 1 route ip  
!  
line con 0  
 exec-timeout 0 0  
 logging synchronous  
line aux 0  
line vty 0 4  
 login  
!  
!  
end
```

# ISQ Configuration

```
!  
version 12.4  
service timestamps debug datetime  
msec  
service timestamps log datetime msec  
no service password-encryption  
!  
hostname ISQ  
!  
boot-start-marker  
boot-end-marker  
!  
no aaa new-model  
!  
resource policy  
!  
memory-size iomem 5  
ip subnet-zero  
ip cef  
!  
bridge irb  
!  
interface Loopback0  
 ip address 10.3.3.1 255.255.255.255  
!  
interface FastEthernet0/0  
 description To AMRT  
 ip address 10.247.189.85  
255.255.255.252  
 duplex auto  
 speed auto  
 no cdp enable  
 bridge-group 1  
!  
interface FastEthernet0/1  
 no ip address  
 shutdown  
 duplex auto  
 speed auto  
!
```

```
interface Serial1/0  
 description To NCC-R2  
 no ip address  
 serial restart-delay 0  
 no dce-terminal-timing-enable  
 bridge-group 1  
  
interface Serial1/1  
 no ip address  
 shutdown  
 serial restart-delay 0  
 no dce-terminal-timing-enable  
!  
interface BVI1  
 ip address 10.1.1.10 255.255.255.252  
!  
router rip  
 version 2  
 redistribute connected  
 passive-interface Loopback0  
 network 10.0.0.0  
 no auto-summary  
!  
ip classless  
!  
ip http server  
no ip http secure-server  
!  
control-plane  
!  
bridge 1 protocol ieee  
bridge 1 route ip  
!  
line con 0  
 exec-timeout 0 0  
 logging synchronous  
line aux 0  
line vty 0 4  
 login  
!  
end
```

# NCC Configuration

```
!  
version 12.4  
service timestamps debug datetime msec  
service timestamps log datetime msec  
no service password-encryption  
!  
hostname NCC-R1  
!  
boot-start-marker  
boot-end-marker  
!  
!  
no aaa new-model  
!  
resource policy  
!  
memory-size iomem 5  
ip subnet-zero  
ip cef  
!  
!  
interface FastEthernet0/0  
  description to ERS  
  ip address 10.1.1.2 255.255.255.252  
  duplex auto  
  speed auto  
!  
interface FastEthernet0/1  
  description To NCC-R2  
  ip address 10.1.1.5 255.255.255.252  
  duplex auto  
  speed auto  
!
```

```
interface Serial1/0  
  ip address 10.1.1.9 255.255.255.252  
  serial restart-delay 0  
  no dce-terminal-timing-enable  
!  
interface Serial1/1  
  no ip address  
  shutdown  
  serial restart-delay 0  
  no dce-terminal-timing-enable  
!  
router rip  
  version 2  
  redistribute connected  
  network 10.0.0.0  
  no auto-summary  
!  
ip classless  
!  
ip http server  
no ip http secure-server  
!  
!  
control-plane  
!  
!  
line con 0  
  exec-timeout 0 0  
  logging synchronous  
line aux 0  
line vty 0 4  
  login  
!  
!  
end
```

# MRT Configuration

```
!  
version 12.4  
service timestamps debug datetime msec  
service timestamps log datetime msec  
no service password-encryption  
!  
hostname MRT  
!  
boot-start-marker  
boot-end-marker  
!  
!  
no aaa new-model  
!  
resource policy  
!  
memory-size iomem 5  
ip subnet-zero  
ip cef  
!  
interface FastEthernet0/0  
  description To ERS  
  ip address 10.247.189.82 255.255.255.252  
  duplex auto  
  speed auto  
!  
ip classless  
ip route 0.0.0.0 0.0.0.0 10.247.189.81  
!  
ip http server  
no ip http secure-server  
!  
control-plane  
!  
line con 0  
  exec-timeout 0 0  
  logging synchronous  
line aux 0  
line vty 0 4  
!  
end
```

# AMRT Configuration

```
!  
version 12.4  
service timestamps debug datetime msec  
service timestamps log datetime msec  
no service password-encryption  
!  
hostname AMRT  
!  
boot-start-marker  
boot-end-marker  
!  
!  
no aaa new-model  
!  
resource policy  
!  
memory-size iomem 5  
ip subnet-zero  
ip cef  
!  
interface FastEthernet0/0  
  description To ISQ  
  ip address 10.247.189.86 255.255.255.252  
  duplex auto  
  speed auto  
!  
ip classless  
ip route 0.0.0.0 0.0.0.0 10.247.189.85  
!  
ip http server  
no ip http secure-server  
!  
control-plane  
!  
line con 0  
  exec-timeout 0 0  
  logging synchronous  
line aux 0  
line vty 0 4  
!  
end
```