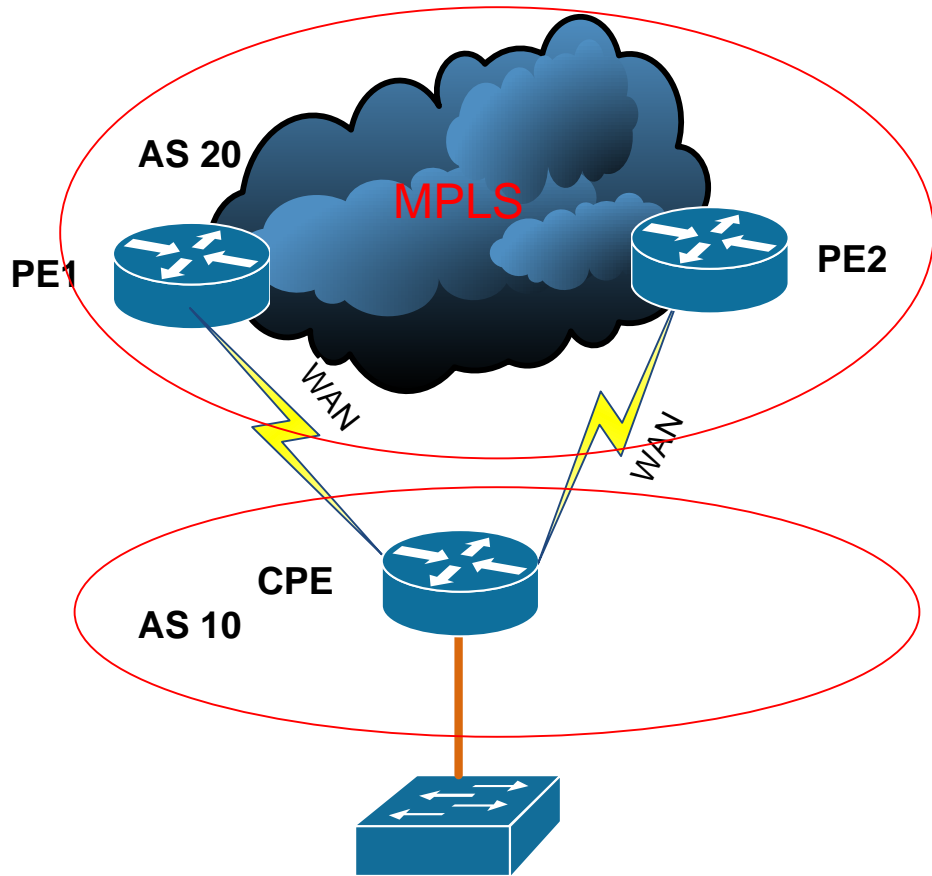


Option1



WAN links: 2

CPE: 1

PE: 2

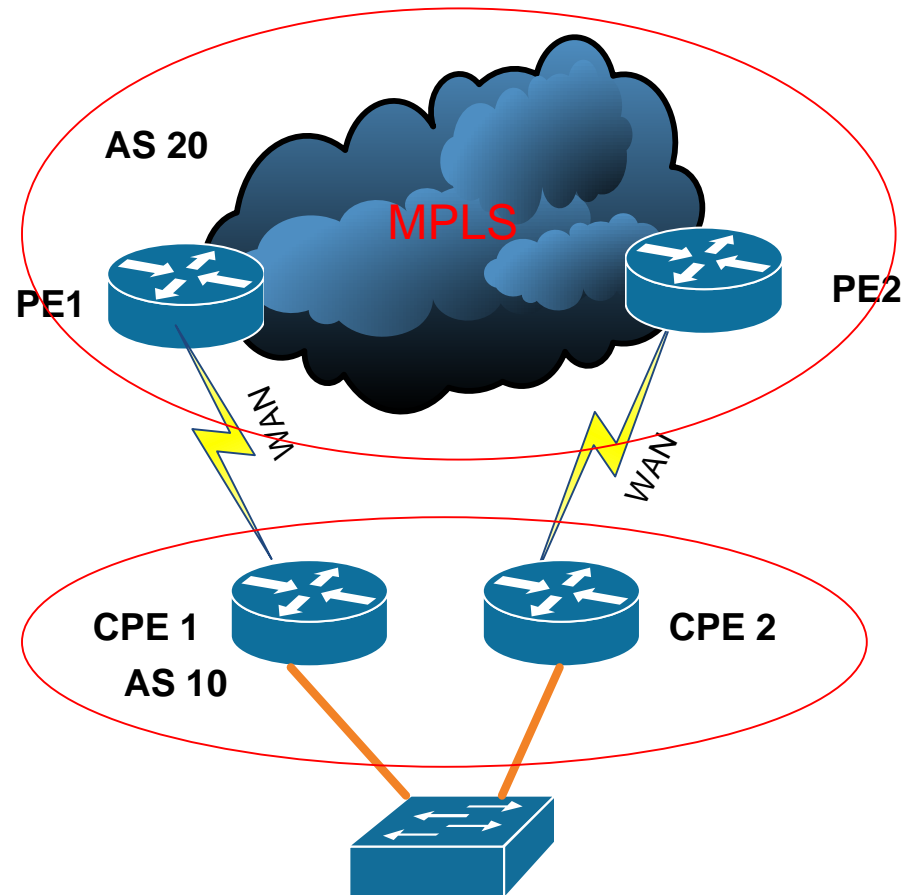
Device: Cisco routers

WAN1/Serial IP: 10.10.10.0/30

WAN2/Serial IP: 11.11.11.0/30

LAN: 100.100.100.0/24 and 200.200.200.0/24

Option 2



WAN links: 2

CPE: 2

PE: 2

Device: Cisco routers

WAN1/Serial IP: 10.10.10.0/30

WAN2/Serial IP: 11.11.11.0/30

LAN: 100.100.100.0/24 and 200.200.200.0/24