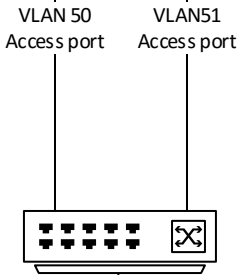
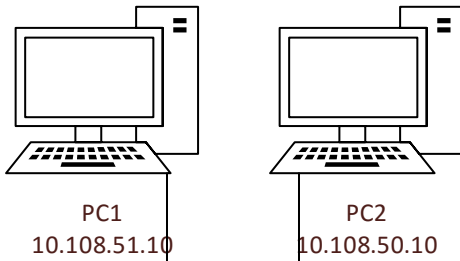
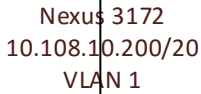


VLAN1 10.108.0.0/20; GW IP 10.108.1.254  
VLAN 50 10.108.50.0/24; GW IP 10.108.50.1  
VLAN 51 10.108.51.0/24; GW IP 10.108.51.1



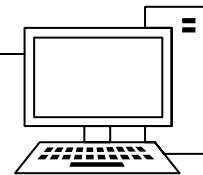
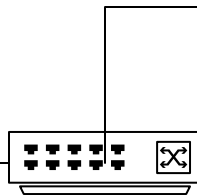
- \* I can ping between PC1 & PC2
- \* I can ping the Gateway IP's from either PC
- \* I cannot ping the IP address of the Nexus VLAN 1 GW 10.108.10.200 from either PC1 or PC2. Seems like any VLAN 1 IP's I cannot ping
- \* From anywhere on the LAN, I can ping the VLAN 50 and 51 Gateways IP's . For example, My PC is PC3 and I can ping the VLAN gateways but not the PC's in VLAN 50 and 51



Trunk



Fiber Connection  
To Telco Closet Switch  
Stack  
Trunk to multiple VLANS



PC3  
10.108.21.29  
VLAN 21

