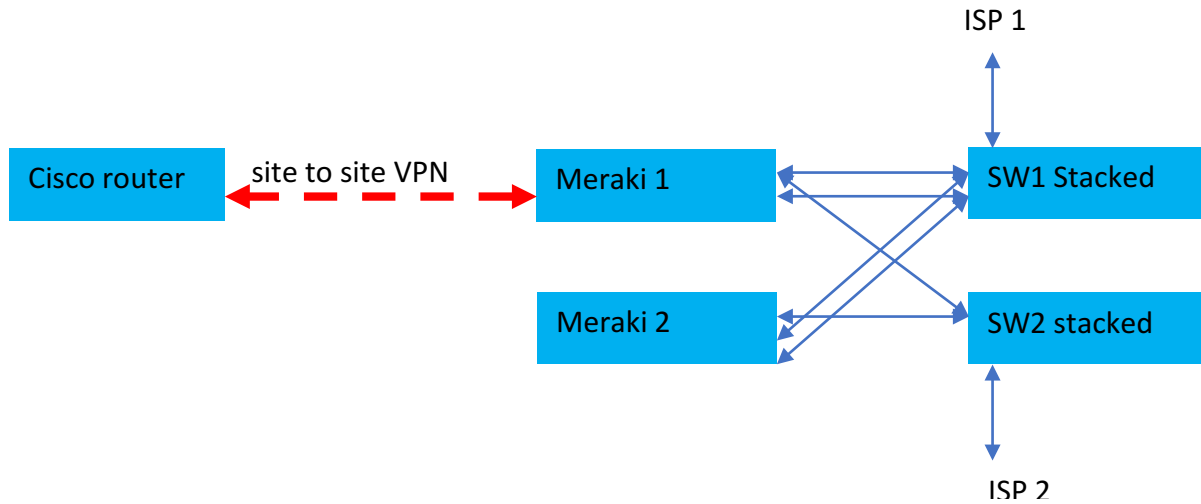


My head office (SITE A) has most of our gears like routers ,Switched and servers.
 We have another site (SITE B) which had 2 Meraki and couple of L3 Switches.
 SITE A and SITE B are connected through a site-to-site VPN connected (Meraki to non Meraki)
 On site A we have a router doing the VPN connection. On SITE B we have 2 Meraki connected in HA doing the VPN.
 The actual connection is like this



DEVICE	PORT #	CONNECT TO	PORT #
MERAKI 1	1	CORE 2	2
MERAKI 1	2	CORE 1	5
MERAKI 1	3	CORE 1	11
MERAKI 2	1	CORE 1	2
MERAKI 2	2	CORE 2	5
MERAKI 2	3	CORE 2	11

Meraki 1 WAN 1 is ISP1 ip address-→x.x.x.1
 Meraki 1 WAN 2 is ISP 2 ip address→y.y.y.1

Meraki 2 WAN 1 is ISP 1 ip address-→x.x.x.2
 Meraki 2 WAN 2 not connected

I have heard that we can connect VRRP between the Meraki. Will VRRP work in this setup?
 I read on certain blog that it is better to have the ISP plug directly to the Meraki as opposed to ISP goes in to L3 SWS.is that true?

How can I make my VPN work if the primary ISP fails as at now if ISP 1 fails my VPN goes down as the cisco router is pointing to ISP 1 ip address x.x.x.1.

