

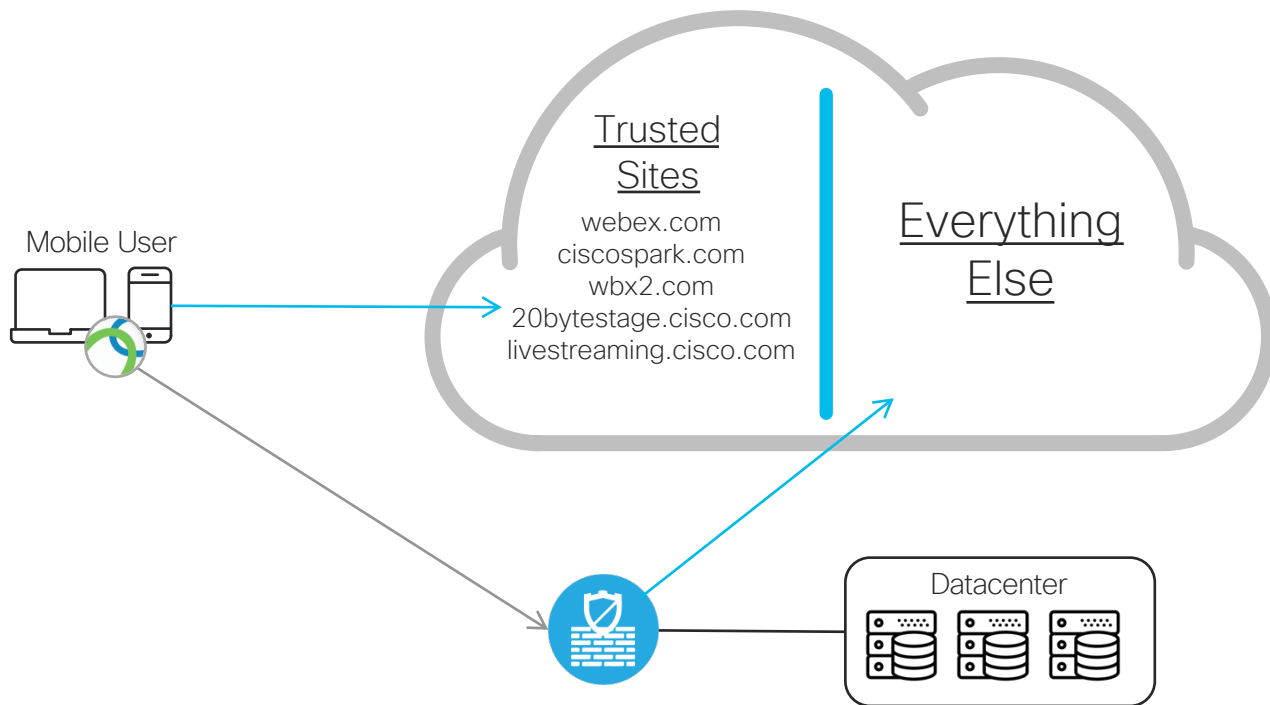


AnyConnect Dynamic Split Tunneling

AnyConnect Dynamic Split Tunnels

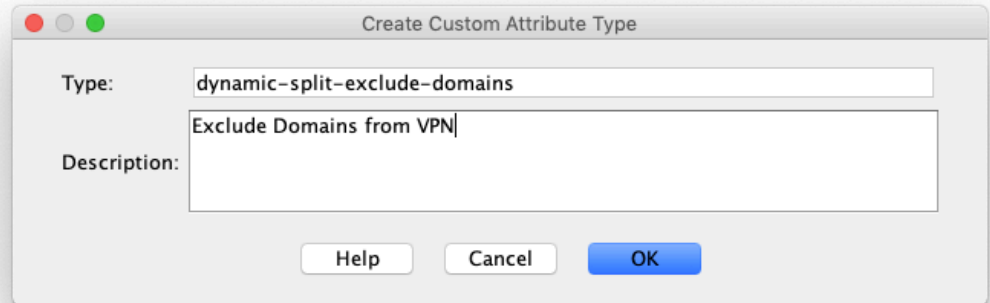
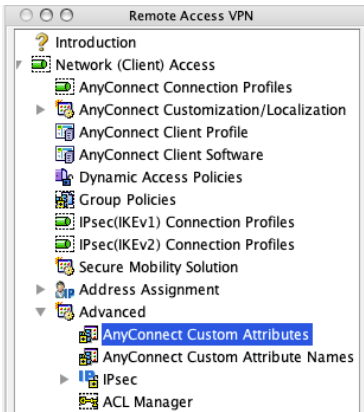
- Allows applications to be dynamically excluded from the AnyConnect VPN tunnel by specifying a list of domain names.
- AnyConnect will dynamically identify IP addresses associated with these domains, and exclude them from the VPN tunnel
- This allows trusted cloud and web applications to be offloaded from TIC access points.

Traffic Flow



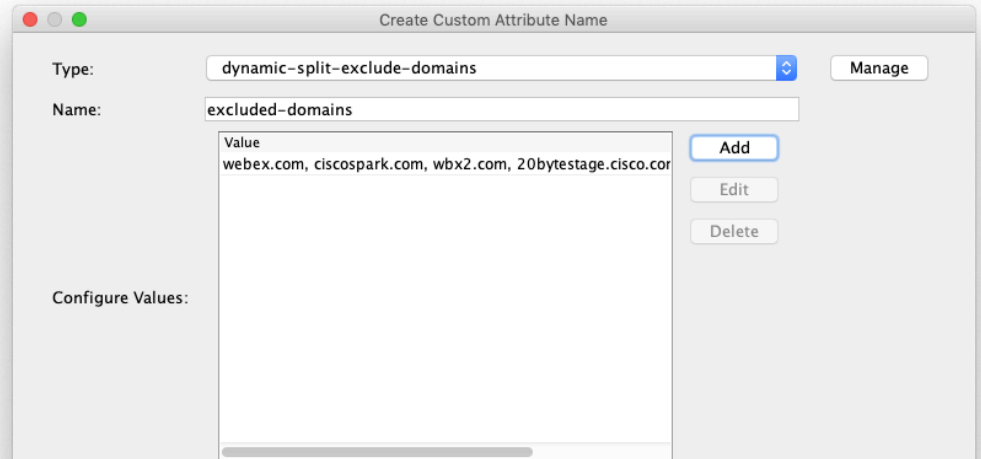
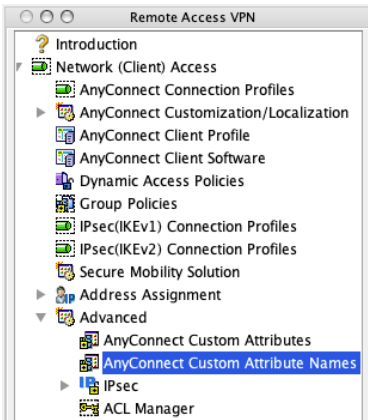
ASDM Configuration – Custom Attribute Type

- First, under the Remote Access VPN Configuration select:
 - Network (Client) Access > Advanced > AnyConnect Custom Attributes
 - Click “Add” to Create a New Type



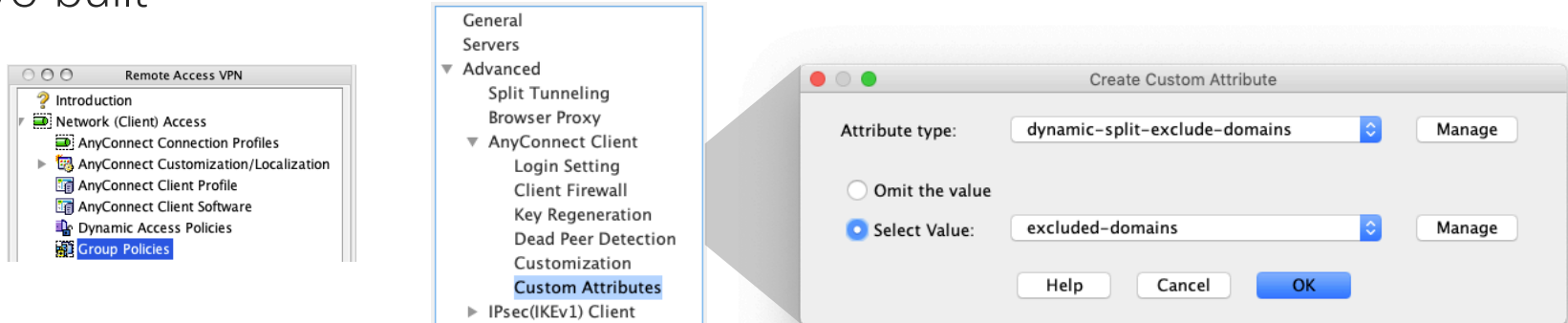
ASDM Configuration – Custom Attribute Names

- Next, select AnyConnect Custom Attribute Names
 - Click “Add” to create a new Name
 - Select the Type generated in the previous step
 - Give a Name and add the comma delimited list of domains



ASDM Configuration – Group Policy

- Under Network (Client) Access select Group Policy and click edit for the group policy that you would like to add the exclusions for.
- In the Group Policy editor under Advanced > AnyConnect Client > Custom Attributes click "Add" and assign the Type and Name you have built



CLI Configuration

```
asa-vpn(config)# webvpn
asa-vpn(config-webvpn)# anyconnect-custom-attr dynamic-split-exclude-domains
description Exclude Domains from VPN
asa-vpn(config)# exit
asa-vpn(config)# anyconnect-custom-data dynamic-split-exclude-domains excluded-
domains webex.com, ciscospark.com, wbx2.com, 20bytestage.cisco.com,
livestreaming.cisco.com
asa-vpn(config)# group-policy DfltGrpPolicy attributes
asa-vpn(config-group-policy)# anyconnect-custom dynamic-split-exclude-domains
value excluded-domains
asa-vpn(config-group-policy)# exit
asa-vpn(config)# write mem
```

Excluded
Domains

The screenshot shows the 'Statistics' window for a Virtual Private Network (VPN) connection. The window title is 'Statistics' and it features a menu bar with 'AnyConnect', 'VPN', 'System Scan', and 'Roaming Security'. Below the menu bar, the title 'Virtual Private Network (VPN)' is displayed. A tabbed interface shows 'Statistics' as the active tab, with other tabs for 'Route Details', 'Firewall', and 'Message History'. The main content area is a table with the following data:

▼ Connection Information	
State:	Connected
Tunnel Mode (IPv4):	Tunnel All Traffic
Tunnel Mode (IPv6):	Tunnel All Traffic
Dynamic Tunnel Exclusion:	webex.com ciscopark.com wbx2.com 20bytestage.cisco.com livestreaming.cisco.com
Dynamic Tunnel Inclusion:	None
Duration:	00:06:00
Session Disconnect:	6 Days 23 Hours Remaining
Management Connection State:	Disconnected (user tunnel active)
▼ Address Information	
Client (IPv4):	10.82.160.61
Client (IPv6):	2001:420:C0C4:1009:0:0:0:1E
Server:	64.102.252.9
▼ Bytes	
Sent:	997611
Received:	1184910
▼ Frames	
Sent:	5172
Received:	3882
▼ Control Frames	

At the bottom right of the window, there are two buttons: 'Reset' and 'Export Stats...'. A red arrow from the text 'Excluded Domains' points to the 'Dynamic Tunnel Exclusion' row in the table.

Bypass
Routes



Statistics

AnyConnect VPN System Scan Roaming Security

Virtual Private Network (VPN)

Statistics Route Details Firewall Message History

▼ Non-Secured Routes (IPv4)

3.12.51.69/32	(encryption.a6.ciscospark.com)
3.12.88.131/32	(apheleia-a.wbx2.com)
3.12.113.124/32	(encryption.a6.ciscospark.com)
3.12.128.88/32	(conv.a6.ciscospark.com)
3.12.133.38/32	(metrics.a7.ciscospark.com)
3.12.191.45/32	(apheleia-a.wbx2.com avatar-a.wbx2.com)
3.12.192.96/32	(achm2-sni.wbx2.com)
3.16.239.40/32	(hydra-a.wbx2.com)
3.130.159.52/32	(conv.a6.ciscospark.com)
3.132.19.198/32	(achm-sni.wbx2.com calendar-a.wbx2.com)
3.132.52.225/32	(conv.a6.ciscospark.com)
3.132.86.75/32	(achm2-sni.wbx2.com)
3.132.101.6/32	(encryption.a6.ciscospark.com)
3.132.110.129/32	(hydra-a.wbx2.com)
3.134.12.105/32	(achm-sni.wbx2.com calendar-a.wbx2.com)
3.135.120.8/32	(apheleia-a.wbx2.com)
13.59.223.29/32	(achm-sni.wbx2.com calendar-a.wbx2.com)
13.59.223.30/32	(hydra-a.wbx2.com)
13.59.223.52/32	(hydra-a.wbx2.com)
13.59.223.62/32	(conv.a6.ciscospark.com)
13.59.223.63/32	(apheleia-a.wbx2.com metrics.a7.ciscospark.com)
13.59.223.68/32	(conv.a6.ciscospark.com)
13.59.223.71/32	(encrvotion.a6.ciscospark.com)

Secured
Default
Route

Statistics

AnyConnect VPN System Scan Roaming Security

Virtual Private Network (VPN)

Statistics Route Details Firewall Message History

- 69.26.190.26/32 (cme-linuscmewsydwsyd-073-wsyd-public.wbx2.com)
- 69.26.190.52/32 (cme-linuscmesquaredwsyd-019-wsyd-public.wbx2.com)
- 69.26.190.55/32 (cme-linuscmewsydwsyd-088-wsyd-public.wbx2.com)
- 69.26.190.60/32 (cme-linuscmesquaredwsyd-004-wsyd-public.wbx2.com)
- 114.29.196.31/32 (cme-linuscmewsgpwsyp-107-wsgp-public.wbx2.com)
- 114.29.196.44/32 (cme-linuscmewsgpwsyp-710-wsgp-public.wbx2.com)
- 114.29.196.97/32 (cme-linuscmewsgpwsyp-014-wsgp-public.wbx2.com)
- 114.29.196.121/32 (cme-linuscmesquaredwsgp-025-wsgp-public.wbx2.com)
- 114.29.196.143/32 (cme-linuscmesquaredwsgp-044-wsgp-public.wbx2.com)
- 114.29.196.153/32 (cme-linuscmewsgpwsyp-019-wsgp-public.wbx2.com)
- 173.39.230.71/32 (cme-linuscmewsjc2wsjc2-028-wsjc2-public.wbx2.com)
- 173.39.231.72/32 (cme-linuscmesquaredwsjc2-015-wsjc2-public.wbx2.com)
- 207.182.170.159/32 (cme-linuscmesquaredwdfw2-574-wdfw2-public.wbx2.com)
- 207.182.171.94/32 (cme-linuscmewdfw2wdfw2-916-wdfw2-public.wbx2.com)
- 207.182.171.192/32 (cme-linuscmewdfw2wdfw2-038-wdfw2-public.wbx2.com)
- 207.182.187.190/32 (cme-linuscmesquaredwsjc2-097-wsjc2-public.wbx2.com)
- 207.182.189.46/32 (cme-linuscmesquaredwdfw2-073-wdfw2-public.wbx2.com)
- 210.4.196.78/32 (cme-linuscmewrtnwrt-008-wrnt-public.wbx2.com)
- 210.4.196.101/32 (cme-linuscmewrtnwrt-015-wrnt-public.wbx2.com)
- 216.151.141.42/32 (cme-linuscmesquaredwsjc2-431-wsjc2-public.wbx2.com)

▼ Secured Routes (IPv4)
0.0.0.0/0

▼ Secured Routes (IPv6)
0:0:0:0:0:0/0

Requirements

- AnyConnect 4.5 or later
- ASA Version 9.0 or later
- ASDM Version 7.5.1 or later

References

- AnyConnect
 - https://www.cisco.com/c/en/us/td/docs/security/vpn_client/anyconnect/anyconnect47/administration/guide/b_AnyConnect_Administrator_Guide_4-7/configure-vpn.html#task_76944267EA7C439DBAB20DF1770B3CED
- ASA ASDM
 - https://www.cisco.com/c/en/us/td/docs/security/asa/asa913/asdm713/vpn/asdm-713-vpn-config/vpn-asdm-setup.html#task_ydq_tbw_tz
- ASA CLI
 - https://www.cisco.com/c/en/us/td/docs/security/asa/asa913/configuration/vpn/asa-913-vpn-config/vpn-params.html#id_120330

