

Install Windows Server 2016

1. The following steps describe the installation of Windows Server 2016 to each host:
2. All Hosts
3. On boot, the machine detects the presence of the Windows installation media.
4. After the installer has finished loading, Enter the relevant region information and click Next.
5. Click Install now.
6. Enter the Product Key and click Next.
7. Select Windows Server 2016 Datacenter (Server with a GUI) and click Next.



You may optionally remove the GUI after the Hyper-V cluster is operational.

8. After reviewing the EULA, accept the license terms and click Next.
9. Select Custom: Install Windows only (advanced).
10. Select Custom (advanced) installation.
11. In the Virtual Media Session manager uncheck the Mapped checkbox for the Windows ISO and select yes to confirm.
12. Click Add Image.
13. Browse to the Cisco fNIC driver ISO, click Open.
14. Check the Mapped checkbox next to the Cisco fNIC Driver ISO. Download the latest driver iso image from the cisco.com site.

Browse for driver software on your computer

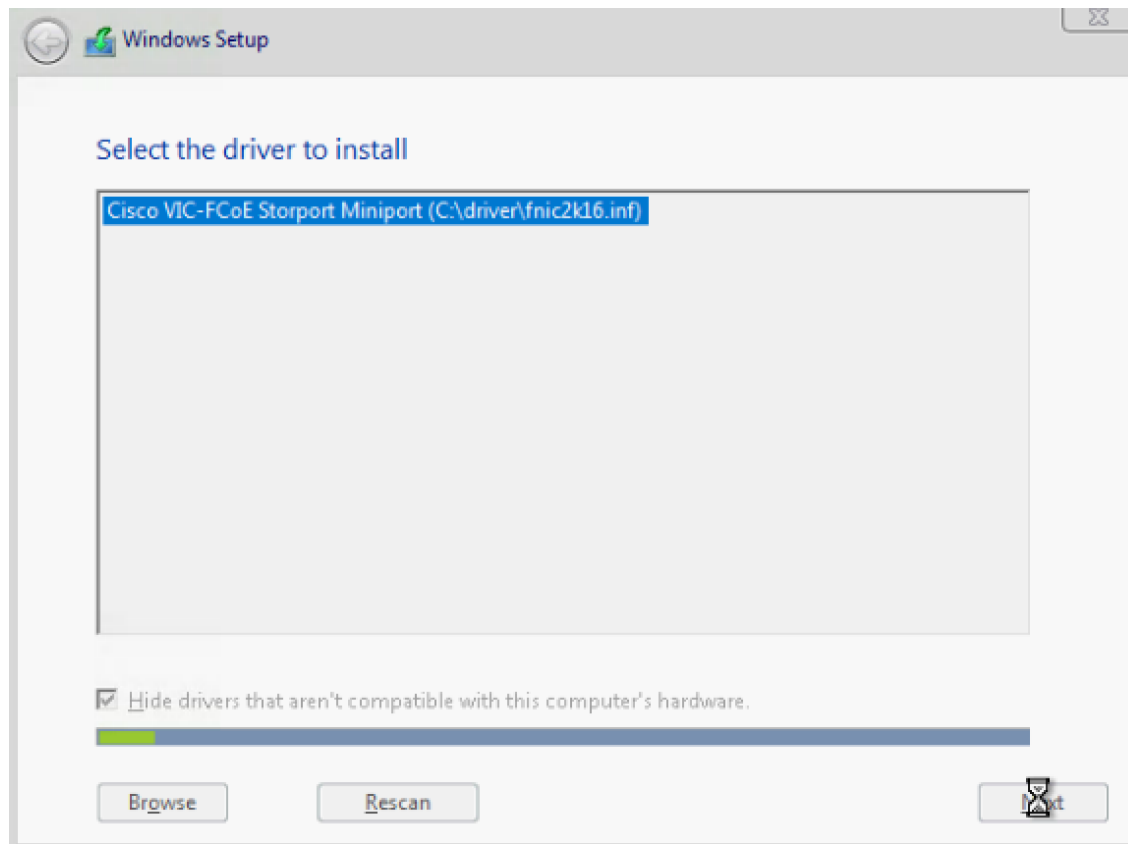
Search for driver software in this location:

F:\Network\Cisco\VIC\W2K16\x64




Browse...

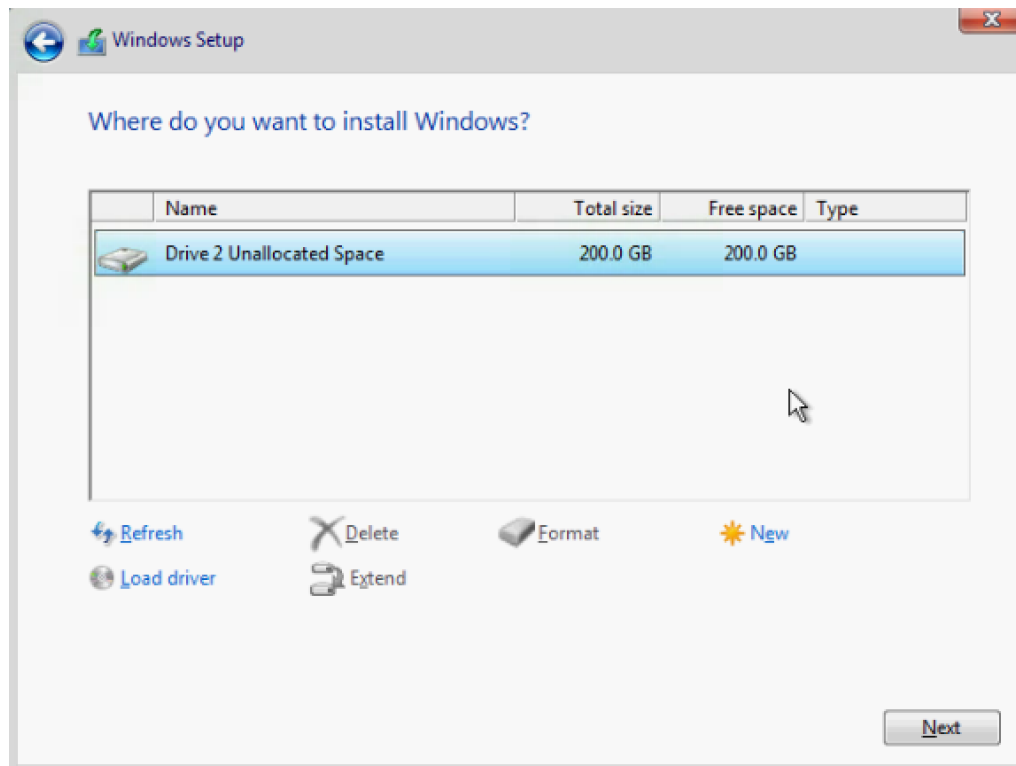
Include subfolders

15. Back in the KVM Console, click Load Driver and then, click OK.
16. The Cisco VIC FCoE Storport Miniport driver should auto detected; Click Next.



17. You should see a LUN listed in the drive selection screen.

-
-  Only a single LUN instance should be displayed. Multiple instance of the same LUN indicates that there are multiple paths to the installation LUN. Verify that the SAN zoning is correct and restart the installation.
 -  The message "Windows Can't be installed on this drive" appears because the Windows installation ISO image is not mapped at this time.
 -  The Cisco eNIC driver can be loaded at this point in the same way as the fNIC driver. Loading the eNIC driver at this time bypasses the need to load the eNIC driver in the section titled "Installing Windows eNIC Driver".
-



18. Select the LUN, and click Next to continue with the install.
19. When Windows is finished installing, enter an administrator password on the settings page and click Finish.

Install Chipset and Windows eNIC Drivers

This section provides detailed information on installing the Intel chipset drivers and the Cisco VIC enic drivers.

All Hosts

1. In the Virtual Media Session manager, uncheck the Mapped checkbox for the Windows ISO.
2. Click Add Image
3. Browse to the Cisco UCS driver ISO, click Open
4. Check the Mapped checkbox for the Cisco UCS driver ISO.
5. Browse to the CD ROM > Chipset > Intel > <Server Model> W2K16 > x64
6. Double click on Setup Chipset to install the chipset driver and reboot the system
7. In the KVM console, open Server Manager, and select Tools > Computer Management
8. In Computer Manager, select System Tools > Device Manager > Other devices.
9. Right-click one of the Ethernet Controller, and select Update Driver Software.