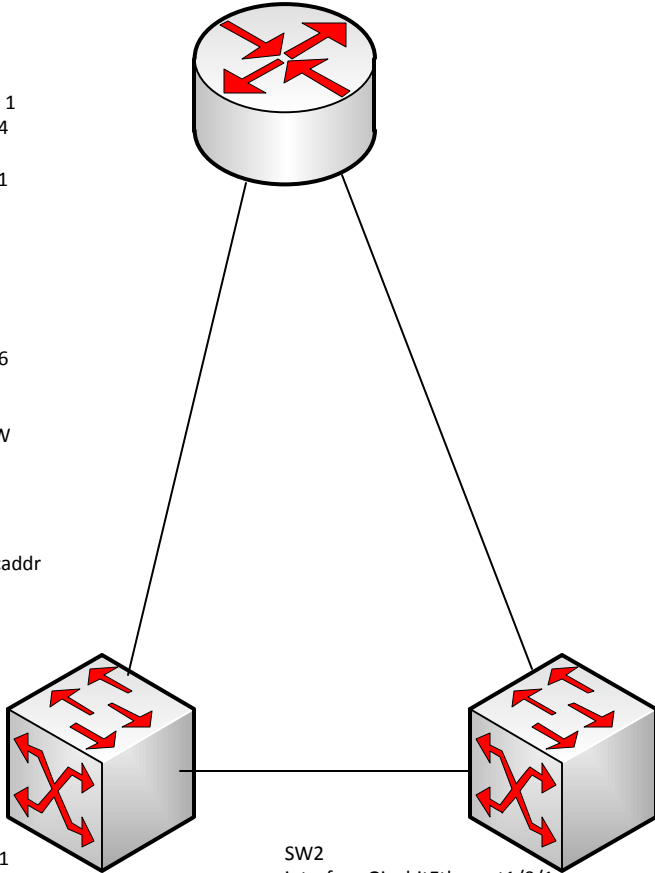


```

bridge irb
!
interface GigabitEthernet0/0
no ip address
ip flow ingress
ip flow egress
duplex auto
speed auto
bridge-group 250
bridge-group 250 path-cost 1
bridge-group 250 priority 24
!
interface GigabitEthernet0/1
no ip address
ip flow ingress
ip flow egress
duplex auto
speed auto
bridge-group 250
bridge-group 250 priority 16
!
interface BVI250
description Voice Server NW
ip address 10.200.200.11
ip flow ingress
ip flow egress
ip pim sparse-dense-mode
h323-gateway voip bind srcaddr
10.200.200.11

```

OLD



```

SW1
interface GigabitEthernet1/0/1
description VG_RTR1 Gi0/0
switchport
switchport access vlan 5
switchport mode access
switchport nonegotiate
!

```

```

SW2
interface GigabitEthernet1/0/1
description VG_RTR1 Gi0/1
switchport
switchport access vlan 5
switchport mode access
switchport nonegotiate
!

```

```

SW01#sh spann int g1/0/1
Vlan      Role Sts Cost  Prio.Nbr Type
-----
VLAN005  Desg FWD 4   128.814 P2p Peer(STP)

```

```

SW01#sh spann int g1/0/1
Vlan      Role Sts Cost  Prio.Nbr Type
-----
VLAN005  Altn BLK 4   128.786 P2p Peer(STP)

```

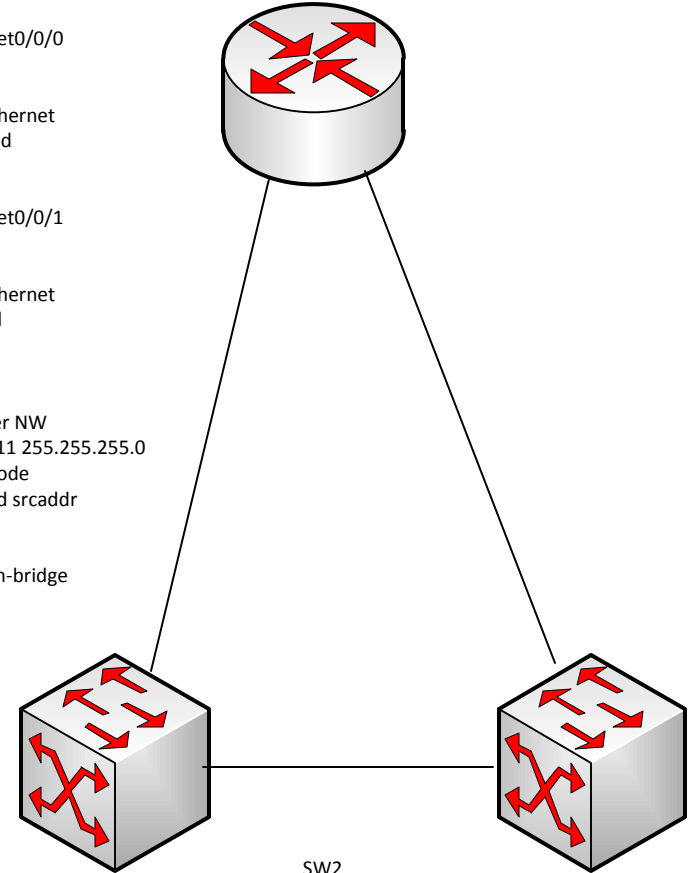
NO LOOP

```

domain 250
!
redundancy
mode none
bridge-domain 250
!
bridge irb
!
interface GigabitEthernet0/0/0
no ip address
negotiation auto
service instance 250 ethernet
encapsulation untagged
bridge-domain 250
!
interface GigabitEthernet0/0/1
no ip address
negotiation auto
service instance 250 ethernet
encapsulation untagged
bridge-domain 250
!
interface BDI250
description Voice Server NW
ip address 10.200.200.11 255.255.255.0
ip pim sparse-dense-mode
h323-gateway voip bind srcaddr
10.200.200.11
!
bridge 250 protocol vlan-bridge
bridge 250 route ip

```

NEW



```

SW1
interface GigabitEthernet1/0/1
description VG_RTR1 Gi0/0
switchport
switchport access vlan 5
switchport mode access
switchport nonegotiate
!

```

```

SW2
interface GigabitEthernet1/0/1
description VG_RTR1 Gi0/1
switchport
switchport access vlan 5
switchport mode access
switchport nonegotiate
!

```

```

SW01#sh spann int g1/0/1
Vlan      Role Sts Cost  Prio.Nbr Type
-----
VLAN005  Desg FWD 4   128.1 P2p

```

```

SW01#sh spann int g1/0/1
Vlan      Role Sts Cost  Prio.Nbr Type
-----
VLAN005  Desg FWD 4   128.1 P2p

```

LOOP