

Cisco Secure ACS - Windows Internet Explorer

https://172.16.2.1/acsadmin/ Certificate Error Bing

Favorites Suggested Sites Web Slice Gallery

Cisco Secure ACS

Protected mode is currently turned off for the Internet zone. Click here to open security settings.

Cisco Secure ACS  
EVAL(Days left: 85)

acsadmin ACS01 (Primary) Log Out About Help

My Workspace

Network Resources

Users and Identity Stores

Identity Groups

Internal Identity Stores

Users

Hosts

External Identity Stores

LDAP

Active Directory

RSA SecurID Token Servers

RADIUS Identity Servers

Certificate Authorities

Certificate Authentication Profile

Identity Store Sequences

Policy Elements

Access Policies

Monitoring and Reports

System Administration

Users and Identity Stores > Certificate Authentication Profile

Certificate Authentication Profile

Showing 1-2 of 2 50 per page Go

Filter: Match if: Go

<input type="checkbox"/>	Name	Description
<input type="checkbox"/>	CN Username	Predefined Certificate Authentication Profile
<input type="checkbox"/>	Machine	Machine-Test

Create Duplicate Edit Delete

Page 1 of 1

Internet | Protected Mode: Off

00:16 16/05/2013

Cisco Secure ACS - Windows Internet Explorer

https://172.16.2.1/acsadmin/ Certificate Error Bing

Favorites Suggested Sites Web Slice Gallery

Cisco Secure ACS

Protected mode is currently turned off for the Internet zone. Click here to open security settings.

Cisco Secure ACS  
EVAL(Days left: 85)

acsadmin ACS01 (Primary) Log Out About Help

My Workspace  
Network Resources  
Users and Identity Stores  
Identity Groups  
Internal Identity Stores  
Users  
Hosts  
External Identity Stores  
LDAP  
Active Directory  
RSA SecurID Token Servers  
RADIUS Identity Servers  
Certificate Authorities  
Certificate Authentication Profile  
Identity Store Sequences  
Policy Elements  
Access Policies  
Monitoring and Reports  
System Administration

Users and Identity Stores > Certificate Authentication Profile > Edit: "CN Username"

General

Name: CN Username

Description: Predefined Certificate Authentication Profile

Certificate Definition

Principal Username X509 Attribute: Subject Alternative Name - EMail

☐ Perform Binary Certificate Comparison with Certificate retrieved from LDAP or Active Directory

Name:  Selected

= Required fields

Submit Cancel

Done Internet | Protected Mode: Off 100%

Start 00:16 16/05/2013

Cisco Secure ACS - Windows Internet Explorer

https://172.16.2.1/acsadmin/ Certificate Error Bing

Protected mode is currently turned off for the Internet zone. Click here to open security settings.

Cisco Secure ACS  
EVAL(Days left: 85)

acsadmin ACS01 (Primary) Log Out About Help

My Workspace  
Network Resources  
Users and Identity Stores  
Identity Groups  
Internal Identity Stores  
Users  
Hosts  
External Identity Stores  
LDAP  
Active Directory  
RSA SecurID Token Servers  
RADIUS Identity Servers  
Certificate Authorities  
Certificate Authentication Profile  
Identity Store Sequences  
Policy Elements  
Access Policies  
Monitoring and Reports  
System Administration

Users and Identity Stores > Certificate Authentication Profile > Edit: "Machine"

General  
Name: Machine  
Description: Machine-Test  
Certificate Definition  
Principal Username X509 Attribute: Subject Alternative Name - DNS  
☐ Perform Binary Certificate Comparison with Certificate retrieved from LDAP or Active Directory  
Name:  Selected  
\* = Required fields

Submit Cancel

Done Internet | Protected Mode: Off 100% 00:16 16/05/2013

Cisco Secure ACS - Windows Internet Explorer

https://172.16.2.1/acsadmin/ Certificate Error Bing

Protected mode is currently turned off for the Internet zone. Click here to open security settings.

Cisco Secure ACS  
EVAL(Days left: 85)

acsadmin ACS01 (Primary) Log Out About Help

My Workspace  
Network Resources  
Users and Identity Stores  
Identity Groups  
Internal Identity Stores  
Users  
Hosts  
External Identity Stores  
LDAP  
Active Directory  
RSA SecurID Token Servers  
RADIUS Identity Servers  
Certificate Authorities  
Certificate Authentication Profile  
Identity Store Sequences  
Policy Elements  
Access Policies  
Monitoring and Reports  
System Administration

Users and Identity Stores > External Identity Stores > Active Directory

General Directory Groups Directory Attributes

Connection Details

Active Directory Domain Name: wireless.local

Please specify the credentials used to join this machine to the Active Directory Domain:

Username: administrator

Password: .....

You may use the Test Connection Button to ensure credentials are correct and Active Directory Domain is reachable.

Test Connection

Click on 'Save Changes' to connect to the Active Directory Domain and save this configuration. Once you have successfully connected to the Domain, you can select the Directory Groups and Directory Attributes to be available for use in policy rules.

End User Authentication Settings

☒ Enable password change

☒ Enable machine authentication

☒ Enable Machine Access Restrictions

Session time (hours):

Save Changes Discard Changes Clear Configuration

Internet | Protected Mode: Off 100%

Start 00:17 16/05/2013

Cisco Secure ACS - Windows Internet Explorer

https://172.16.2.1/acsadmin/ Certificate Error Bing

Protected mode is currently turned off for the Internet zone. Click here to open security settings.

Cisco Secure ACS  
EVAL(Days left: 85)

acsadmin ACS01 (Primary) Log Out About Help

My Workspace  
Network Resources  
Users and Identity Stores  
Policy Elements  
Access Policies  
Access Services  
Service Selection Rules  
Default Device Admin  
Default Network Access  
WiFi Access  
Identity Authorization  
Max User Session Policy  
Max Session User Settings  
Max Session Group Settings  
Monitoring and Reports  
System Administration

Access Policies > Access Services

Showing 1-3 of 3 50 per page Go

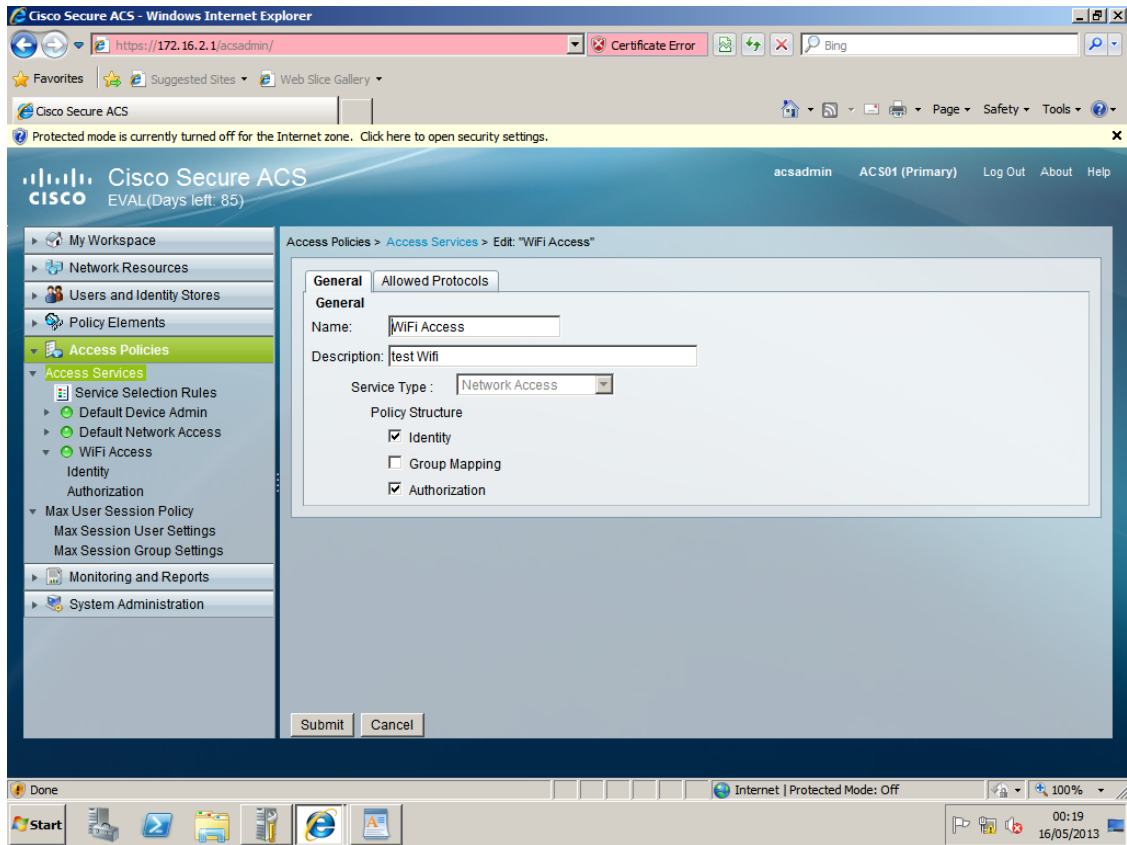
Filter: Match if: Go

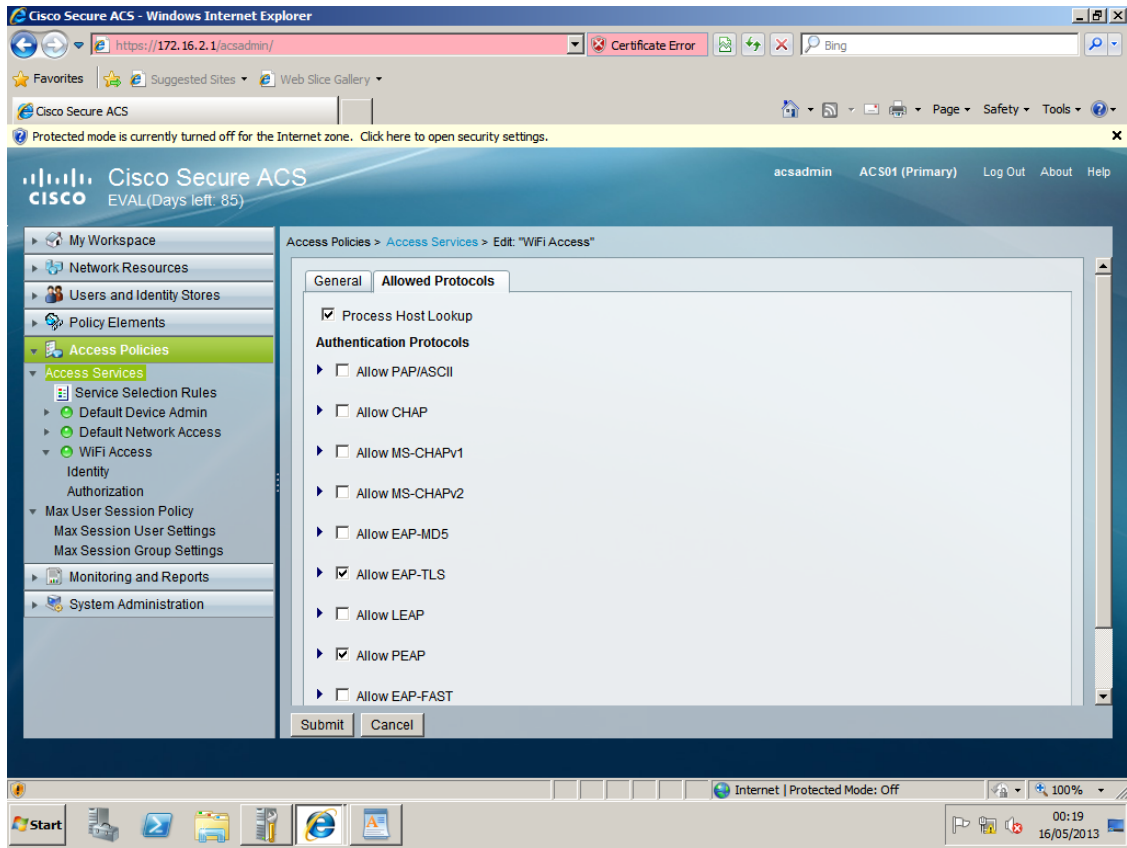
<input type="checkbox"/>	Name	Service Type	Included Policies	Description
<input type="checkbox"/>	Default Device Admin	Device Administration	<a href="#">Identity</a> <a href="#">Authorization</a>	Default Device Administration Access Service
<input type="checkbox"/>	Default Network Access	Network Access	<a href="#">Identity</a> <a href="#">Authorization</a>	Default Network Access Service
<input type="checkbox"/>	WiFi Access	Network Access	<a href="#">Identity</a> <a href="#">Authorization</a>	test Wifi

Create Duplicate Edit Delete

Page 1 of 1

Internet | Protected Mode: Off 100% 00:18 16/05/2013





Cisco Secure ACS - Windows Internet Explorer

https://172.16.2.1/acsadmin/ Certificate Error Bing

Protected mode is currently turned off for the Internet zone. Click here to open security settings.

Cisco Secure ACS  
EVAL(Days left: 85)

acsadmin ACS01 (Primary) Log Out About Help

My Workspace  
Network Resources  
Users and Identity Stores  
Policy Elements  
Access Policies  
Access Services  
Service Selection Rules  
Default Device Admin  
Default Network Access  
WiFi Access  
Identity Authorization  
Max User Session Policy  
Max Session User Settings  
Max Session Group Settings  
Monitoring and Reports  
System Administration

Access Policies > Access Services > Service Selection Rules

Single result selection Rule based result selection

Service Selection Policy

Filter: Status Match if: Equals Clear Filter Go

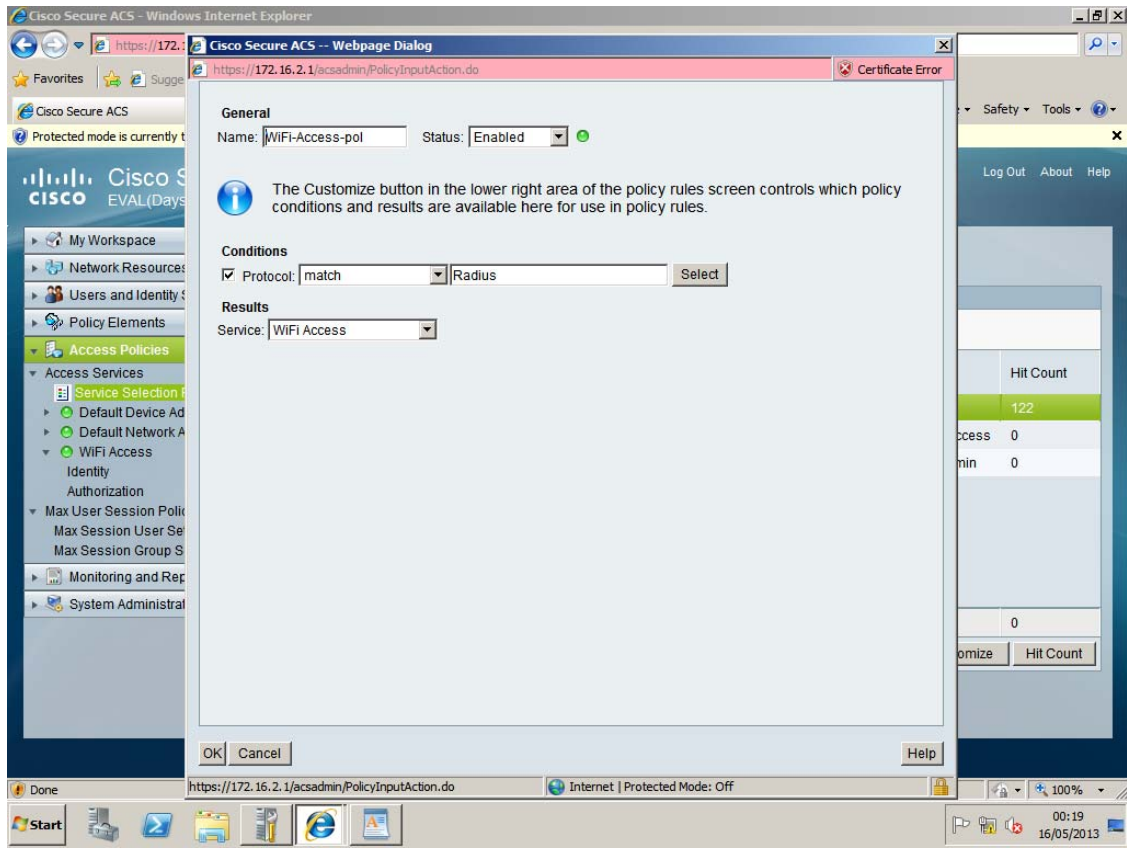
	<input type="checkbox"/>	Status	Name	Protocol	Conditions	Results	Hit Count
1	<input type="checkbox"/>	●	WiFi-Access-pol	match Radius		WiFi Access	122
2	<input type="checkbox"/>	●	Rule-1	match Radius		Default Network Access	0
3	<input type="checkbox"/>	●	Rule-2	match Tacacs		Default Device Admin	0
**	<input type="checkbox"/>		Default	If no rules defined or no enabled rule matches.		DenyAccess	0

Create... Duplicate... Edit Delete Move to... Customize Hit Count

Save Changes Discard Changes

Internet | Protected Mode: Off 100% 00:19 16/05/2013





Cisco Secure ACS - Windows Internet Explorer

https://172.16.2.1/acsadmin/ Certificate Error Bing

Protected mode is currently turned off for the Internet zone. Click here to open security settings.

Cisco Secure ACS  
EVAL(Days left: 85)

acsadmin ACS01 (Primary) Log Out About Help

My Workspace  
Network Resources  
Users and Identity Stores  
Policy Elements  
Access Policies  
Access Services  
Service Selection Rules  
Default Device Admin  
Default Network Access  
WiFi Access  
Identity  
Authorization  
Max User Session Policy  
Max Session User Settings  
Max Session Group Settings  
Monitoring and Reports  
System Administration

Access Policies > Access Services > WiFi Access > Identity

Single result selection Rule based result selection

Identity Policy

Filter: Status Match if: Equals Clear Filter Go

	<input type="checkbox"/>	Status	Name	Eap Authentication Method	System:UserName	Results Identity Source	Hit Count
1	<input type="checkbox"/>	●	ID-1	match EAP-TLS	starts with host/	Machine	8
2	<input type="checkbox"/>	●	ID-2	match EAP-TLS	-ANY-	CN Username	12
**	<input type="checkbox"/>		Default	If no rules defined or no enabled rule matches.		CN Username	0

Create... Duplicate... Edit Delete Move to... Customize Hit Count

Save Changes Discard Changes

Done Internet | Protected Mode: Off 100% 00:20 16/05/2013

