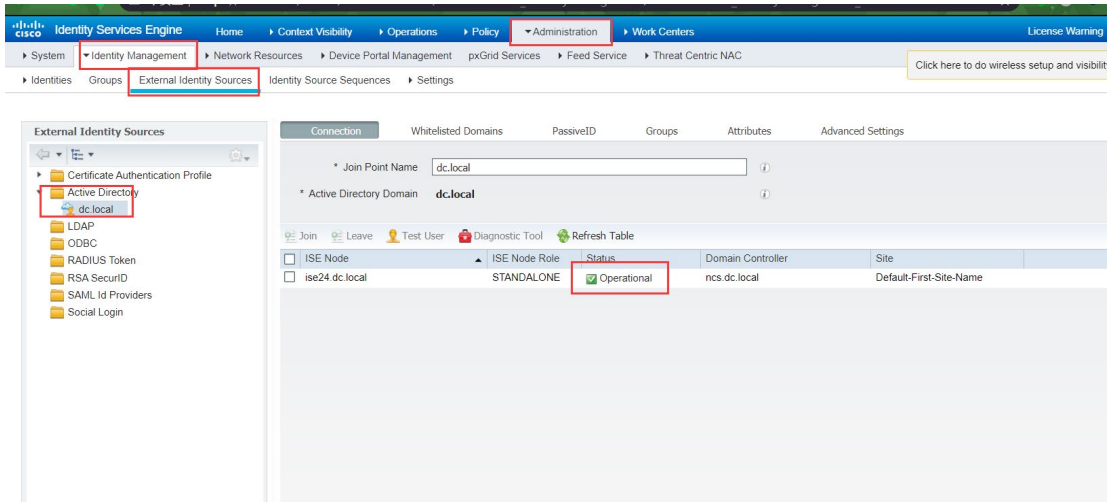
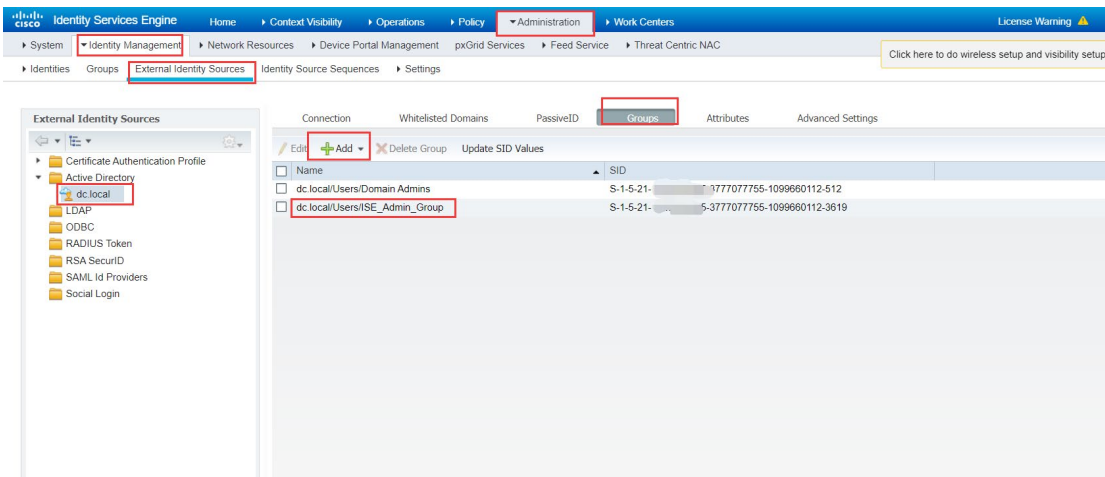


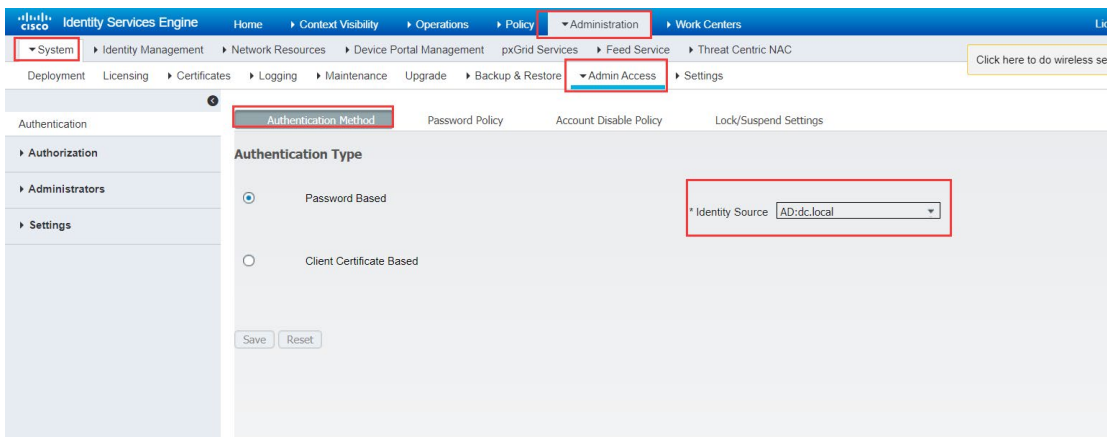
1. 设置外部身份源，以 AD 举例，确保 ise 连接 domain controller 的状态是正常的 (set External Identity Source ,eg: ActiveDirectory. Ensure that the status of ise is Operational)



2. 在 Group 选项卡中，添加 ISE\_Admin\_Group // ISE\_Admin\_Group 需手动在域控制器上创建 (In the Group tab, add ISE\_Admin\_Group // ISE\_Admin\_Group needs to be manually created on the domain controller)



3. 在 Administration-System-AdminAccess-Authentication Method 中设置 IdentitySource 为 AD (Set IdentitySource to AD in "Administration-System-AdminAccess-Authentication method")



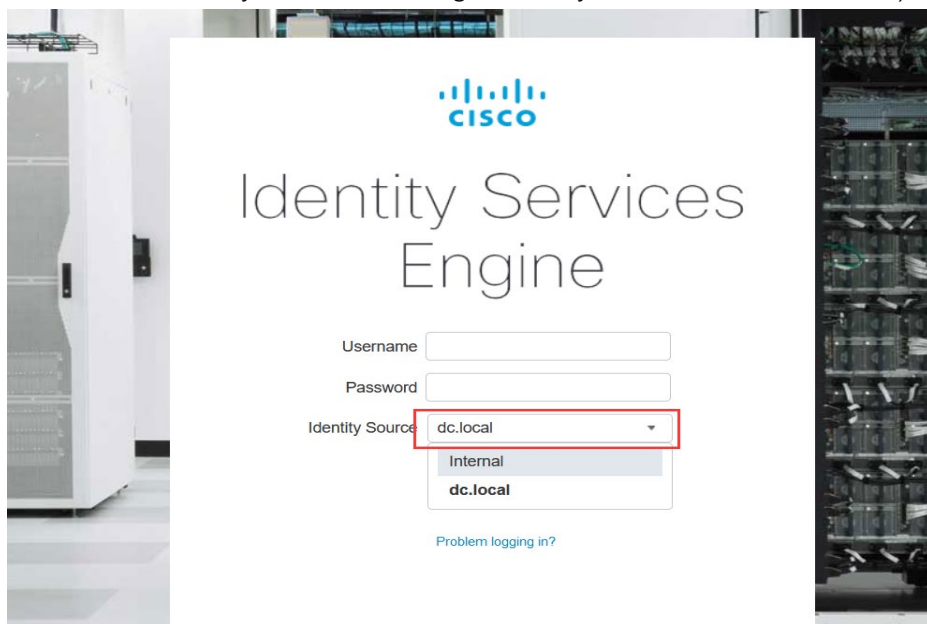
4. 在 Super Admin 组中选择前面设置的 “ISE\_Admin\_Group”  
(Select the previously set "ISE\_Admin\_Group" in the Super Admin group)

The screenshot shows the Cisco ISE Administration console. The 'Admin Groups' page is open, and the 'Super Admin' group is selected. The 'External Identity Source' is set to 'dc.local'. Under 'External Groups', 'dc.local/Users/ISE\_Admin\_Group' is listed. The 'Member Users' table shows two users: 'test1' and 'admin'. The 'Save' button is highlighted.

Name	External Groups Mapped	Description
Customization Admin	0	Access Permission to Guest Menu and Device Portal Management.
ERS Admin	0	Full access permission to External RESTful Services(ERS) APIs. Admins assign...
ERS Operator	0	Read-only access permission to the External RESTful Services(ERS) APIs. Ad...
Helpdesk Admin	0	Access permission for Operations tab.
Identity Admin	0	Access permission for Operations tab. Includes Identity Management and data ...
MnT Admin	0	Access permission for Operations tab.
Network Device Admin	0	Access permission for Operations tab. Includes Network Resources and data ac...
Policy Admin	0	Access permission for Operations and Policy tabs. Includes System and Identity...
RBAC Admin	0	Access permission for Operations tab. Includes System and data access permis...
Read Only Admin	0	Access Permission for admin with read-only functionality
SPOG Admin	0	This is the group for SPOG Admin to use the APIs for export and import
Super Admin	1	Access permission for Operations, Policy and Administration tabs. Includes data...
System Admin	0	Access permission for Operations tab. Includes System and data access permis...
TACACS+ Admin	0	Access Permission to TACACS plus Device related functionality.

5. 使用其他浏览器进行登录测试

- 可以使用“ISE\_Admin\_Group”中的任何成员登录 GUI (Any member in "ISE\_Admin\_Group" can be used to log in to the GUI)
- 如果选择使用 ISE 本地账户登录，需要将“IdentitySource”改回“Internal”(If you choose to login with ISE local account, you need to change "IdentitySource" back to "Internal")



6. 如果 ISE 的账户出现锁定，或者限制登录的情况，可以通过 AD 的账户进入 ISE 修改设置，临时禁用“Lock/Suspend Settings”，或者直接修改内部管理员的密码  
(If the ISE account is locked or in suspend status, you can enter the ISE through the AD account to modify settings, temporarily disable the "Lock/Suspend Settings", or directly modify the internal administrator's password)