

Cisco Wireless Portfolio



802.11ac Indoor Access Points



Cisco Aironet 3700 Series Access Points with Cisco High Density Experience (HDX) Technology and 802.11ac

The Cisco Aironet 3700 Series is designed for high-density network environments that use mission-critical, high-performance applications. The Aironet 3700 Series incorporates the Cisco High-Density Experience (HDX) by using an innovative chipset with the best-in-class RF architecture. The Aironet 3700 Series provides three times the performance of current 802.11n equipment at a greater distance.

- The industry's first access points access points with integrated 802.11ac Wave 1 radio supporting 4x4 multiple-input, multiple output (MIMO) with 3 Spatial Streams
- Provides 3x the performance of current 802.11n based Wi-Fi at a greater distance
- Optimized AP Roaming: Faster Attach and Release
- CleanAir with enhanced support for 80Ghz Channel Support
- Updated ClientLink 3.0 with 802.11a/b/g/n/ac support
- Device Battery Life Savings
- Cross-AP Noise Reduction
- Enhanced Location Accuracy
- Modular designed Access Point supports other modules such as Wireless Security, Cisco 3G Small Cell or future technology such as 802.11ac Wave 2 Module

Cisco Aironet 3700i Access Point: Indoor Environments, with Internal antennas

- AIR-CAP3702I-x-K9: Dual-band, controller-based 802.11a/g/n/ac
- AIR-CAP3702I-xK910: Eco-pack (dual-band 802.11a/g/n/ac) 10 quantity access points

Cisco Aironet 3700e Access Point: Indoor, Challenging Environments, with External Antennas

- AIR-CAP3702E-x-K9: Dual-band controller-based 802.11a/g/n/ac
- AIR-CAP3702E-xK910: Eco-pack (dual-band 802.11a/g/n/ac) 10 quantity access points

Cisco Aironet 3700p Access Point: High-Density Environments, with Narrow-Beam Width, High-Gain, Antennas

- AIR-CAP3702P-x-K9 : Dual-band controller-based 802.11a/g/n/ac
- AIR-CAP3702P-xK910: Eco-pack (dual-band 802.11a/g/n/ac) 10 quantity access points



802.11ac Indoor Access Points



Cisco Aironet 2700 Series with HDX and 802.11ac

The Cisco Aironet 2700 Series is a dual-band, 802.11ac supported Wi-Fi Access Point optimized for adding capacity and coverage to dense Wi-Fi networks. It also serves the performance needs of the latest BYOD clients now shipping with 802.11ac connections.

Delivering high performance for any small, medium-sized, and large enterprise network, the Aironet 2700 Series uses a purpose-built chipset with best-in-class RF architecture. It has been created specifically to take advantage of all the new speed and function of the latest Wi-Fi technology standard but at a price point that lets you ease into 802.11ac networking.

The Cisco Aironet 2700 Series Access Point

- Delivers the most advanced features in its class
- Includes an integrated 802.11ac radio that supports 3x4 MIMO with three spatial streams. The fourth receive antenna provides a performance advantage over all competing 802.11ac solutions on the market today
- Supports true beamforming for clients that support one, two or three spatial streams
- Offers Cisco HDX support. HDX includes Cisco CleanAir within 80MHz channel widths, ClientLink 3.0, and RF Turbo Performance for better performance of all clients in a dense environment
- Offers a 2700e model for harsh/challenging indoor environments. This model requires external dual-band antennas

Cisco Aironet 2700i Indoor Access with Internal Antennas

- AIR-CAP2702I- x-K9: Dual-band, controller-based 802.11a/g/n/ac
- AIR-CAP2702I- xK910: Eco-pack (dual-band 802.11a/g/n/ac) 10 quantity access points

Cisco Aironet 2700e Indoor Access with External Antennas

- AIR-CAP2702E- x-K9: Dual-band controller-based 802.11a/g/n/ac
- AIR-CAP2702E- xK910: Eco-pack (dual-band 802.11a/g/n/ac), 10 quantity access points



802.11ac Indoor Access Points



Cisco Aironet 1700 Series Access Points with 802.11ac

Designed for small, medium-sized enterprise network, Cisco Aironet 1700 Series Access Points is entry-level access points that offers the latest 802.11ac Wi-Fi technology to meet the growing needs of today's wireless network while providing offers the right value to help customers ease into [802.11ac](#) networking.

The Cisco Aironet 1700 Series Access Points support [802.11ac Wave 1](#) standard capabilities that allow you stay ahead of growing bandwidth requirements as:

- More wireless clients associate with the network
- More users tap into bandwidth-heavy multimedia applications
- Mobile workers increasingly use multiple Wi-Fi devices

The Cisco Aironet 1700 Series Access Points is a component of Cisco's series of flagship, 802.11ac-enabled Aironet Series access points that deliver robust mobility experiences.

- Entry-level access point for small to midsized organizations, including retail, manufacturing, education, and branch offices
- Attractive price and performance for migrating to 802.11ac
- 802.11ac Wave 1 support with 3 x 3 MIMO, two spatial streams
- Cisco [CleanAir Express](#) spectrum intelligence across 20-, 40-, and 80-MHz-wide channels
- Optimized access point roaming which intelligently decides the correct access point as people move
- Multiple input, multiple output (MIMO) equalization for better uplink performance

Cisco Aironet 1700i Access Points Indoor Deployment with Internal Antennas

- AIR-CAP1702I-x-K9: Dual-band, controller-based 802.11a, g, n, and ac
- AIR-CAP1702I-xK910: Eco-pack (dual-band 802.11a/g/n/ac) 10 quantity access points



802.11n Indoor Access Points



Cisco Aironet 3600 Series Access Points with CleanAir® Technology and 802.11n

The Cisco Aironet 3600 Series access point delivers the highest level of 802.11n performance, with the industry's first and only 4 x 4 MIMO, three spatial streams, 802.11n based access point as well as expansion capability for emerging technologies such as 802.11ac radio or advanced services such as a Wireless Security and Spectrum Intelligence module or Cisco's 3G Small Cell Module. The 3600 Series offers better coverage and security in dense-client, high-bandwidth networks that utilize applications such as HD video and virtual desktop infrastructure (VDI).

- Highest 802.11n performance with [Cisco CleanAir](#) technology for a self-healing, self-optimizing wireless network
- The industry's first 4 x 4 multiple-input multiple-output (MIMO) access point with three spatial streams
- Future-proof modularity, providing flexible upgrades and add-on options for [802.11ac](#), [Wireless Security Module \(WSM\)](#) or Cisco's [3G Small Cell Module](#) and other future technologies
- Cisco Wireless [ClientLink 2.0](#), optimizing performance for tablets, smartphones, and laptops and all 802.11n one-, two-, and three-spatial stream devices, as well as legacy 802.11a/g clients
- Standard 802.3af Power over Ethernet (PoE)
- The 3600i model has integrated antennas for typical office deployments

The 3600e model is for RF-challenging indoor environments and requires external dual-band antennas. (For more information about antennas, visit: [Antenna Product Portfolio for Cisco Aironet 802.11n Access Points](#))

Indoor Access Points (Office Environments)



- AIR-CAP3602I-x-K9 Internal Antennas
- AIR-CAP3602E-X-K9 External Antennas
- AIR-CAP3602I-xK910 - Internal Antenna eco-pack 10
- AIR-CAP3602E-xK910 - External Antenna eco-pack 10

Add-on Modules

- AIR-RM3000AC-X-K9=
- AIR-RM3000ACAK910=
- AIR-RM3000M=
- AIR-RM3000M-10=




Access Points


	<p>Cisco® Aironet® 2600 Series Access Points with Cisco CleanAir Technology and 802.11n</p> <ul style="list-style-type: none"> • Cisco Aironet 2600 Series Access Points with Cisco CleanAir technology sets the standard for enterprise wireless technology by offering great performance, functionality, and reliability at a competitive price • Supports 802.11n with 3 x 4 MIMO technology with three spatial streams to sustain 450 Mbps rates over a greater range for more capacity and reliability than competing access points • Cisco ClientLink 2.0 technology for better downlink performance and range for all mobile devices and better battery life on mobile devices such as smartphones and tablets • Cisco CleanAir technology for proactive, intelligent spectrum intelligence to combat performance problems due to RF interference • Cisco Aironet 2600i Access Point has internal antennas for typical office deployments • Cisco Aironet 2600e Access Point is for rugged environments and requires external antennas • Antenna Product Portfolio for Cisco Aironet 802.11n Access Points 	<p>The Cisco Aironet 2600i Access Point: Indoor Environments with Internal Antennas</p> <ul style="list-style-type: none"> • AIR-CAP2602I-x-K9: Dual-band controller-based 802.11a/g/n • AIR-CAP2602I-xK910: Eco-pack (dual-band 802.11a/g/n) 10 quantity access points • AIR-SAP2602I-x-K9: Dual-band autonomous 802.11a/g/n • AIR-SAP2602I-x-K95: Eco-pack (dual-band 802.11a/g/n) 5 quantity access points <p>The Cisco Aironet 1600i Access Point: Indoor Environments with External Antennas</p> <ul style="list-style-type: none"> • AIR-CAP2602E-x-K9: Dual-band controller-based 802.11a/g/n • AIR-CAP2602E-xK910: Eco-pack (dual-band 802.11a/g/n) 10 quantity access points • AIR-SAP2602E-x-K9: Dual-band autonomous 802.11a/g/n • AIR-SAP2602E-x-K95: Eco-pack (dual-band 802.11a/g/n) 5 quantity access points
	<p>Cisco® Aironet® 1600 Series Access Points with 802.11n</p> <ul style="list-style-type: none"> • Cisco Aironet 1600 Series Access Point provides a low total cost of ownership by integrating seamlessly with existing network • Standard 802.3af Power over Ethernet • Cisco Aironet 1600i Access Point has internal antennas for typical office deployments • Cisco Aironet 1600e Access Point is for rugged environments and requires external antennas • Antenna Product Portfolio for Cisco Aironet 802.11n Access Points 	<p>The Cisco Aironet 1600i Access Point: Indoor Environments with Internal Antennas</p> <ul style="list-style-type: none"> • AIR-CAP1602I-x-K9 Dual-Band Controller based 802.11a/g/n • AIR-CAP1602I-x-K910 - eco-pack 10 • AIR-SAP1602I-X-K9 - Dual Band Stand Alone - 802.11a/g/n • AIR-SAP1602i-X-K9 5 - eco pack 5 <p>The Cisco Aironet 1600i Access Point: Indoor Environments with External Antennas</p> <ul style="list-style-type: none"> • AIR-CAP1602E-x-K9 - Dual-band controller-based 802.11a/g/n • AIR-CAP1602E-xK910 - Eco-pack (dual-band 802.11a/g/n) 10 quantity access points • AIR-SAP1602E-x-K9 - Dual-band stand-alone 802.11a/g/n • AIR-SAP1602E-xK9-5 - Eco-pack (dual-band stand-alone 802.11a/g/n) 5 quantity access points



Access Points



	<p>Cisco Aironet 600 Series OfficeExtend Access Points with 802.11n The Cisco Aironet 600 Series is a simultaneous dual-band 802.11n access point designed for the home telework environment or small, remote offices.</p> <ul style="list-style-type: none"> • Secure access from the home to the corporate environment • Segmentation of personal network traffic from corporate traffic • Controller-based deployment • Does not support Cisco CleanAir technology 	<ul style="list-style-type: none"> • AIR-OEAP6021-X-K9-802.11a/g/n • AIR-OEAP6021-X-K9-Eco-pack (10 quantity)
---	---	---

Outdoor Access Points

	<p>Cisco Aironet 1570 Series Access Points The Cisco Aironet 1570 Series is an 802.11ac outdoor access point designed for outdoor access or wireless mesh.</p> <ul style="list-style-type: none"> • Industries first Rugged 802.11ac-based Outdoor access point to include 4x4 multiple input and multiple output (MIMO) with three spatial streams • Versatile deployment options including Access or mesh network, Ethernet, wireless, fiber, or cable backhaul • Includes Cisco's High-Density Experience (HDX), a purpose built AP for industry-leading performance for highly secure, reliable wireless connections and a robust mobility experience • Cisco CleanAir technology: Integrated spectrum intelligence to detect, classify, and mitigate RF interference from unauthorized wireless bridges or malicious devices • Service provider support: Wi-Fi for next-generation mobile data offload and personalized mobile services • High-bandwidth video surveillance over Wi-Fi without the high cost of installing cables over long distances 	<p>Cisco Aironet 1572IC Access Point with Internal Antennas & DOCSIS 3.0 Cable Modem</p> <ul style="list-style-type: none"> • AIR-CAP1572IC1-zzK9 where "zz" represents the regulatory domain • AIR-CAP1572IC2-zzK9 • AIR-CAP1572IC3-zzK9 • AIR-CAP1572IC4-zzK9 <p>Cisco Aironet 1572EC Access Point with External Antennas & DOCSIS 3.0 Cable Modem</p> <ul style="list-style-type: none"> • AIR-CAP1572EC1-zzK9 where "zz" represents the regulatory domain • AIR-CAP1572EC2-zzK9 • AIR-CAP1572EC3-zzK9 • AIR-CAP1572EC3-zzK9 <p>Cisco Aironet 1572EAC Access Point with External Antennas</p> <ul style="list-style-type: none"> • AIR-CAP1572EAC-zzK9 where "zz" represents the regulatory domain <p>The C1, C2, C3, C4 models are associated with the Upstream/Downstream cable modem analog filter and DOCSIS 3.0 options as listed below:</p> <table border="1"> <tr> <td>• C1</td> <td>5-42/54-1000 MHz</td> <td>North American DOCSIS 3.0</td> </tr> <tr> <td>• C2</td> <td>5-85/108-1002 MHz</td> <td>North American DOCSIS 3.0</td> </tr> <tr> <td>• C3</td> <td>5-65/108-1002 MHz</td> <td>EuroDOCSIS 3.0</td> </tr> <tr> <td>• C4</td> <td>5-65/108-1002 MHz</td> <td>JapanDOCSIS 3.0</td> </tr> </table>	• C1	5-42/54-1000 MHz	North American DOCSIS 3.0	• C2	5-85/108-1002 MHz	North American DOCSIS 3.0	• C3	5-65/108-1002 MHz	EuroDOCSIS 3.0	• C4	5-65/108-1002 MHz	JapanDOCSIS 3.0
• C1	5-42/54-1000 MHz	North American DOCSIS 3.0												
• C2	5-85/108-1002 MHz	North American DOCSIS 3.0												
• C3	5-65/108-1002 MHz	EuroDOCSIS 3.0												
• C4	5-65/108-1002 MHz	JapanDOCSIS 3.0												





Outdoor Access Points

	<p>Cisco Aironet 1550 Series Access Points</p> <p>The Cisco Aironet 1550 Series is an 802.11n outdoor access point designed for outdoor access or wireless mesh.</p> <ul style="list-style-type: none"> • 802.11a/b/g/n multiple-input multiple-output (MIMO) • Service provider support: Wi-Fi for next-generation mobile data offload • RF excellence for reliable data and video • Available with internal or external antenna • Models available for hazardous locations • Cable modem integration for extended connectivity 	<p>External Antenna</p> <ul style="list-style-type: none"> • AIR-CAP1552E-X-K9 <p>Integrated Antenna</p> <ul style="list-style-type: none"> • AIR-CAP1552I-X-K9 <p>With Cable Modem</p> <ul style="list-style-type: none"> • AIR-CAP1552C-X-K9 <p>For Hazardous Locations</p> <ul style="list-style-type: none"> • AIR-CAP1552H-X-K9
	<p>Cisco Aironet 1530 Series Outdoor Access Point</p> <p>Cisco Aironet 1530 Series Outdoor Access Point supports Dual Band, 802.11n based radios and incorporates a low-profile design that can withstand the most rugged outdoor conditions. Cisco Aironet 1530 Series Outdoor Access Point can be used to extend coverage from indoors to the outdoors in retail and campus spaces. With its low profile, esthetically pleasing design, the 1530 is ideal for deployment in areas such historical cities locations where an access point should not stand out. The Cisco Aironet 1530 Series brings the same robust Wi-Fi features that customers expect from Cisco such as:</p> <ul style="list-style-type: none"> • Radio Resource Management and BandSelect to automatically take advantage of the 5 GHz band, VideoStream for high-quality video performance over Wi-Fi • Other features include: <ul style="list-style-type: none"> - Cisco Flexible Antenna Port technology, which is software configurable for either single-band or dual-band antennas - Internal or external antenna versions, with full lines of supported omni and directional antennas - Multiple operational modes, including access point, mesh, point-to-point, point-to-multipoint bridge, and workgroup bridge (WGB) 	<p>Cisco Aironet 1530I (Internal Antennas) and 1530E (External Antennas) Outdoor Access Points</p> <ul style="list-style-type: none"> • AIR-CAP1532I-A-K9 AIR-CAP1532E-A-K9 • AIR-CAP1532I-C-K9 AIR-CAP1532E-C-K9 • AIR-CAP1532I-D-K9 AIR-CAP1532E-D-K9 • AIR-CAP1532I-E-K9 AIR-CAP1532E-E-K9 • AIR-CAP1532I-F-K9 AIR-CAP1532E-F-K9 • AIR-CAP1532I-H-K9 AIR-CAP1532E-H-K9 • AIR-CAP1532I-K-K9 AIR-CAP1532E-K-K9 • AIR-CAP1532I-M-K9 AIR-CAP1532E-M-K9 • AIR-CAP1532I-N-K9 AIR-CAP1532E-N-K9 • AIR-CAP1532I-Q-K9 AIR-CAP1532E-Q-K9 • AIR-CAP1532I-R-K9 AIR-CAP1532E-R-K9 • AIR-CAP1532I-S-K9 AIR-CAP1532E-S-K9 • AIR-CAP1532I-T-K9 AIR-CAP1532E-T-K9 • AIR-CAP1532I-Z-K9 AIR-CAP1532E-Z-K9



Wireless Controllers



NOTE: The Cisco CleanAir technology is supported with Cisco Unified Wireless Network Software Version 7.0 or later.

	<p>Cisco 8500 Series Wireless Controller</p> <ul style="list-style-type: none"> • 802.11n and 802.11ac ready, designed for High Performance and Maximum Scalability • Vastly scalable with a centralized touch-point, single rack-unit (1RU) for up to 6,000 access points, 64,000 clients, and 6,000 branch locations • High speed with 10 Gigabit Ethernet connectivity support: 2 x 10 Gigabit Ethernet ports for redundancy • High-availability with subsecond access points and client stateful fail-over, Bonjour Services Directory, and application visibility and control • Resiliency with redundant dual power supplies • Pay as you grow licensing starting at support for 100 access points • Integrated Wireless Device profiling and policy classification Engine 	<ul style="list-style-type: none"> • AIR-CT8510-100-K9 (100 access points) • AIR-CT8510-300-K9 (300 access points) • AIR-CT8510-500-K9 (500 access points) • AIR-CT8510-1K-K9 (1000 access points) • AIR-CT8510-3K-K9 (3000 access points) • AIR-CT8510-6K-K9 (6000 access points) • AIR-CT8510-SP-K9 (zero access points) • AIR-CT85DC-SP-K9 (zero access points) • AIR-CT8510-HA-K9 (High availability controller for up to 6000 access points)
	<p>Cisco Flex 7500 Series Cloud Controllers</p> <p>The Cisco Flex 7500 Series Cloud Controller is a highly scalable centralized controller for lean branch deployments.</p> <ul style="list-style-type: none"> • 802.11n and 802.11ac ready, supports up to 6000 branch locations • Configure, manage, and troubleshoot up to 6000 access points and 64,000 clients from the data center • Supports up to 100 access points in a single FlexConnect group • Two 10 Gigabit Ethernet ports for redundant connectivity • WAN tolerance and survivability features specifically designed for multisite wireless deployments • Secure guest access, rogue detection for Payment Card Industry (PCI) compliance • In-branch (locally switched) Wi-Fi voice and video • Pay as you grow licensing starting at 300 access point support • High-availability with sub-second access points and client stateful fail-over, Bonjour Services Directory, and application visibility and control • Standalone, rack-mountable appliance • Integrated wireless device profiling and policy classification engine 	<ul style="list-style-type: none"> • AIR-CT7510-300-K9 (300 access points) • AIR-CT7510-500-K9 (500 access points) • AIR-CT7510-1K-K9 (1000 access points) • AIR-CT7510-2K-K9 (2000 access points) • AIR-CT7510-3K-K9 (3000 access points) • AIR-CT7510-6K-K9 (6000 access points) • AIR-CT7510-HA-K9 (High availability controller for up to 6000 access points)



Wireless Controllers



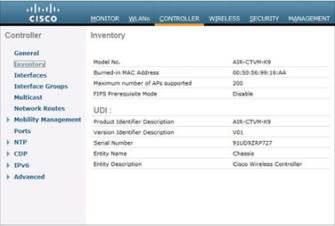
NOTE: The Cisco CleanAir technology is supported with Cisco Unified Wireless Network Software Version 7.0 or later.

	<p>Cisco 5760 Wireless Controller</p> <ul style="list-style-type: none"> • 802.11ac optimized, wire-speed 60 Gbps throughput with advanced network services per controller • Support for up to 1000 access points per controller, up to 12,000 clients per controller • Scalable solution with seamless roaming across 72,000 access points • High resiliency with N+1 clustering, Multiple LAG and redundant power supplies • IOS based wireless controller with rich feature set like Flexible Netflow, Hierarchical QoS with four hardware wireless queues, downloadable ACLs, etc. • Pay as you grow licensing starting at support for 25 access points • Support high availability with AP SSO, Bonjour Services Directory, and application visibility with Generation 2 access points for wireless clients 	<ul style="list-style-type: none"> • AIR-CT5760-25-K9 (25 Access Points) • AIR-CT5760-50-K9 (50 Access Points) • AIR-CT5760-100-K9 (100 Access Points) • AIR-CT5760-250-K9 (250 Access Points) • AIR-CT5760-500-K9 (500 Access Points) • AIR-CT5760-1K-K9 (1000 Access Points) • AIR-CT5760-HA-K9 (High Availability) <p>E-License: L-LIC-CTIOS-1A Paper License: LIC-CTIOS-1A</p>
	<p>Cisco 5500 Series Wireless Controllers</p> <p>The Cisco 5500 Series Wireless Controller simplifies deployment and operation of wireless network for mid-sized to large deployments and campus environments.</p> <ul style="list-style-type: none"> • Supports up to 500 access points and 7000 clients • 802.11n- and 802.11ac ready support up to 8-Gbps throughput • Eight 1 Gigabit Ethernet ports, with Link Aggregation Groups (LAG) support • Pay as you grow licensing starting at support for twelve access points • High-availability with subsecond access points and client stateful fail-over, Bonjour Services Directory, and Application Visibility and Control • Standalone, rack-mountable appliance • Integrated Wireless Device profiling and policy classification Engine 	<ul style="list-style-type: none"> • AIR-CT5508-12-K9 (12 access points) • AIR-CT5508-25-K9 (25 access points) • AIR-CT5508-50-K9 (50 access points) • AIR-CT5508-100-K9 (100 access points) • AIR-CT5508-250-K9 (250 access points) • AIR-CT5508-500-K9 (500 access points) • AIR-CT5508-HA-K9 (High availability controller for up to 500 access points)



Wireless Controllers



NOTE: The Cisco CleanAir technology is supported with Cisco Unified Wireless Network Software Version 7.0 or later.

	<p>Cisco Catalyst 3850 Switch with Integrated Wireless LAN Controller</p> <ul style="list-style-type: none"> • IOS based wireless controller integrated within 3850 switch offering rich feature set like Flexible Netflow, Hierarchical QOS with four hardware wireless queues, downloadable ACLs, etc. • 802.11ac optimized, up to 40 Gbps wire-speed throughput with advanced network services per 3850 switch • Up to 50 access points per switch and per stack; up to 2,000 clients per switch and per stack • High resiliency with AP SSO, Multiple LAG, redundant power supplies, and redundant fans • Converged access switch with integrated controller • Support High Availability with AP SSO, Bonjour Services Directory, and Application Visibility with Gen 2 APs for Wireless Clients 	<p>E-License: L-LIC-CTIOS-1A Paper License: LIC-CTIOS-1A</p>
	<p>Cisco Catalyst 3650 Series Switch</p> <ul style="list-style-type: none"> • Converged access switch with integrated controller • Up to 40G of wireless capacity per switch (48-port models) • Support for up to 25 Access Points and 1000 wireless clients on each switching entity (switch or stack) • Optional stacking of 160Gbps • Three fixed uplink models with 4x Gigabit Ethernet, 2 x 10 Gigabit Ethernet, or 4 x 10 Gigabit Ethernet ports • Dual redundant, modular power supplies and three modular fans providing redundancy • Support High Availability with AP SSO, Bonjour Services Directory, and Application Visibility with Gen 2 APs for Wireless Clients 	<p>E-License: L-LIC-CTIOS-1A Paper License: LIC-CTIOS-1A</p>
	<p>Cisco Virtual Wireless Controller</p> <ul style="list-style-type: none"> • Virtual form-factor controller for any x86 server with VMWare Hypervisor ESXi4.x or 5.x • Supports 200 access points and 3,000 clients • Supports 200 branches • Up to 100 access points per branch and/or flexgroup • Pay as you grow licensing starting at support for five access points • Integrated Wireless Device profiling and policy classification Engine • Co-reside with other virtualized network services - Identity Services Engine (ISE), Cisco Prime Infrastructure, Mobility Services Engine (MSE) 	<ul style="list-style-type: none"> • L-AIR-CTVM-5-K9 (5 access points) • L-LIC-CTVM-UPG (top level sku for adder licenses) • L-LIC-CTVM-1A (1 access point adder license) • L-LIC-CTVM-5A (5 access point adder license) • L-LIC-CTVM-25A (25 access point adder license) • L-LIC-CTVM-DTLS-K9 (Data DTLS License)



Wireless Controllers

NOTE: The Cisco CleanAir technology is supported with Cisco Unified Wireless Network Software Version 7.0 or later.

	<p>Cisco 2500 Series Wireless Controller</p> <p>Cisco 2500 Series Wireless Controller is an entry-level controller that enables systemwide wireless LAN functions in small to medium-sized enterprises and branch offices.</p> <ul style="list-style-type: none"> • Support for up to 75 access points and 1000 clients • 802.11n- and 802.11ac ready support up to 1 Gbps • Four 1 Gigabit Ethernet ports • Payment Card Industry (PCI) functionality for scanner and kiosk • Pay as you grow licensing starting at support for five access points • Standalone small form-factor • Bonjour Services Directory, and Application Visibility and Control 	<ul style="list-style-type: none"> • AIR-CT2504-5-K9 (5 access points) • AIR-CT2504-15-K9 (15 access points) • AIR-CT2504-25-K9 (25 access points) • AIR-CT2504-50-K9 (50 access points) • AIR-CT2504-HA-K9
	<p>Cisco Wireless Controller on the Cisco UCS-E</p> <p>Cisco UCS E-Series Servers are Intel™ Xeon™ based general purposes servers for the Cisco Integrated Services Routers Generation 2 (ISR G2).</p> <ul style="list-style-type: none"> • Entry-level 802.11n, 802.11ac controller application for small to medium-sized enterprises and branch offices • UCS E140S and E140D, E140DP, E160D and E160DP servers with Virtual Wireless Controller can support up to 200 access points and 3000 clients • Integrated Wireless Device profiling and policy classification Engine quickly deploy wireless on-demand, reduce operating costs, and consolidate the branch office infrastructure • Payment Card Industry (PCI) functionality for scanner and kiosk support • Pay as you grow licensing starting at support for five access points • Supported on the Cisco 2900 and 3900 Series ISR G2 routers 	<ul style="list-style-type: none"> • L-AIR-CTVM-5-K9 (5 access points) • L-LIC-CTVM-UPG (top level sku for adder licenses) • L-LIC-CTVM-1A (1 access point adder license) • L-LIC-CTVM-5A (5 access point adder license) • L-LIC-CTVM-25A (25 access point adder license) • L-LIC-CTVM-DTLS-K9 (Data DTLS License)



Wireless Controllers

NOTE: The Cisco CleanAir technology is supported with Cisco Unified Wireless Network Software Version 7.0 or later.



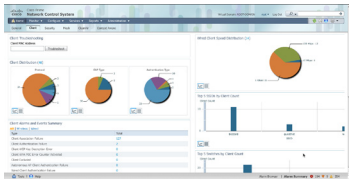
Cisco Wireless Services Module 2 (WiSM2) for Cisco Catalyst 6500 Series Switches

Cisco WiSM2 adds wireless LAN controller functions to Cisco Catalyst® 6500 Series Switches.

- Large deployments up to 1000 access points and 15,000 clients
- 802.11n- and 802.11ac ready support for up to 20 Gbps
- Supports a higher client density, roaming across over wider geographic areas, and faster performance for simultaneous applications
- High-availability with subsecond access point and client stateful fail-over, Bonjour Services Directory, and application visibility and control
- Pay as you grow licensing starting at support for 100 access points
- Integrated Wireless Device profiling and policy classification Engine
- Embedded system for Cisco Catalyst 6500 Series Switches
- Implement up to seven Cisco WiSM2 blades per Cisco Catalyst 6500 Series Switch chassis for added scalability

- WS-SVC-WISM2-1-K9 (100 access points)
- WS-SVC-WISM2-3-K9 (300 access points)
- WS-SVC-WISM2-5-K9 (500 access points)
- WS-SVC-WISM2-K-K9 (1000 access points)
- WS-SVC-WISM2-HA-K9 (High availability controller for up to 1000 access points)

Wireless Network Management



Cisco Prime Infrastructure 1.4

Cisco Prime™ infrastructure is a complete, end-to-end network management solution for the lifecycle of wireless and wired networks

- Intuitive dashboard provides complete visibility into endpoint, users, infrastructure devices, and policy compliance - regardless of network or location
- Converged user, access, and identity management across wired and wireless networks eases the IT burden imposed by Bring Your Own Device (BYOD) evolution
- Endpoint identity policy monitoring through integration with Cisco Identity Services Engine (ISE)
- Highly scalable platform meets the needs of small, mid-sized, and large-scale networks
- Supports up to 15,000 controller-based access points, 5000 standalone access points, and 5000 Cisco Catalyst Switches
- Converged approach enables IT to move from a box management to user-focused management approach
- Real-time monitoring speeds troubleshooting for the top reported customer pain point: network problems related to client devices

Physical Appliance

- PRIME-NCS-APL-K9

NCS Virtual Appliance Software and Device Count License

- L-NCS-1.0-K9 (K9 = 50, 100, 500, 1K, 2.5K, 5K, 10K)

NCS Add-on License

- L-NCS-1.0-ADD-K9 (k9 = 50, 100, 500, 1K, 2.5K, 5K, 10K)

Cisco Prime Infrastructure 1.1 Software and Base License

- R-PI-1.1-x-K9 (x=number of supported devices. Licenses available for 50, 100, 500, 1K, 2.5K, 5K, 10K)

Cisco Prime Infrastructure is available as an upgrade for customers with existing Cisco Prime LAN Management Solutions (LMS) or Cisco Prime Network Control System (NCS) installations. For more information, please see the Prime Infrastructure 1.1 [Ordering and Licensing Guide](#).



Mobility Services

Cisco Mobility Services Engine (MSE)

Cisco Mobility Services Engine is the platform that delivers Base Location Services with enhanced spectrum capabilities, Connected Mobile Experiences (CMX) & Wireless Intrusion Prevention System (WIPS).

- **Base Location Services** – Enables real time location tracking of rogues, interferers, RFID tags and Wi-Fi clients
 - Enhanced RF spectrum monitoring and management leveraging Cisco CleanAir® access points
- **Connected Mobile Experiences (CMX)** uses location data from the Cisco Unified Access infrastructure and Cisco Mobility Services Engine to create detailed business analytics and customer engagement applications, including the following technical features:
 - CMX for Facebook Wi-Fi – Use Cisco Wi-Fi and a software connector to enable end users to connect to the Wi-Fi network and automatically “check-in” to the venue’s Facebook profile to enable valuable demographic information as well as an enhanced user experience
 - CMX Connect – This location-enabled captive portal enables you to create a custom onboarding and landing experience for your customers and better understand visitor behavior while in the venue. Web or social authentication enables easy onboarding to the Wi-Fi network
 - CMX Analytics – Onsite analytics show you how, where, and when customers and visitors are moving throughout a venue. Online analytics shows you top visited websites and metrics for online mobile promotions
 - Mobility Services API – This open API with support for REST and SOAP/XML enables customers and partners to tightly integrate MSE location information into mobile applications, such as location-aware equipment tracking, guest access, device-based services (CMX Device Engage), browser-based services, mobile apps (CMX App Engage), online and onsite analytics, social analytics, and ads and offers
 - CMX Browser Engage – Revolutionize the mobile experience with location and context-aware mobile browser marketing capabilities. Customers and visitors can benefit from nearby services, indoor navigation, targeted promotions, and other informational services by just using their mobile device browser
 - CMX Dashboard – This location services management tool enables organizations to build and measure context-aware, targeted marketing campaigns. They can view authentications, browser campaign adoption (click-throughs) by particular zones, device types, top websites visited per zone, and more

Cisco 3355 Mobility Services Engine – AIR-MSE-3355-K9

Supports up to 2500 access points with Base Location or CMX licenses or 5000 access points with wIPS licenses

Cisco Virtual Mobility Services Engine – Cisco L-MSE-7.0-K9

Supports up to 5000 access points with Base Location or CMX licenses or 10,000 access points with wIPS licenses

CMX License – For Enabling the Cisco CMX Applications

- L-AD-LS-1AP (1 access point)
- L-AD-LS-100AP (100 access points)
- L-AD-LS-1000AP (1000 access points)

Base Location License – For Enabling Enhanced CleanAir Capabilities, Real Time Tracking of Rogues, Interferers, RFID Tags, Wi-Fi Clients and Integration to 3rd Party Apps Using Mobility Services API

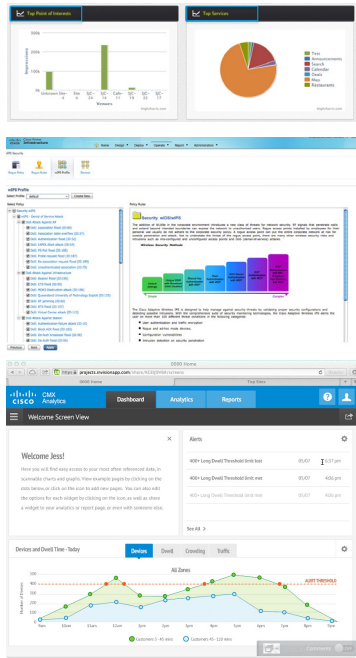
- L-LS-1AP (1 access point)
- L-LS-100AP (100 access points)
- L-LS-1000AP (1000 access points)

wIPS Monitor Mode (MM) – For Enabling wIPS on Monitor Mode Access Points

- L-WIPS-MM-1AP (1 access point)
- L-WIPS-MM-100AP (100 access points)
- L-WIPS-MM-1000AP (1000 access points)

wIPS Enhanced Local Mode (ELM) – For Enabling wIPS on Local Mode/Data Serving Access Points

- L-WIPS-ELM-1AP (1 access point)
- L-WIPS-ELM-100AP (100 access points)
- L-WIPS-ELM-1000AP (1000 access points)





Mobility Services

- **Wireless Intrusion Prevention System (WIPS)** enables the detection, location, and mitigation of wireless attacks on both the wireless network and the wireless devices within the venue

For more information, please visit www.cisco.com/go/mse or www.cisco.com/go/cmz.