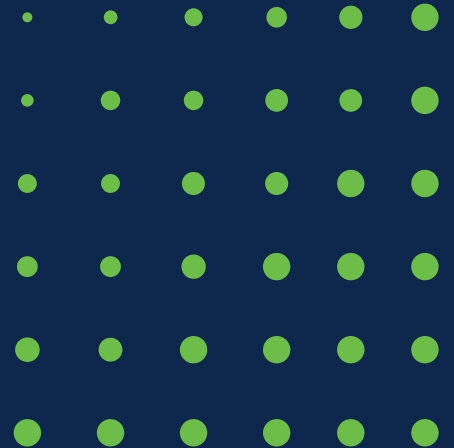


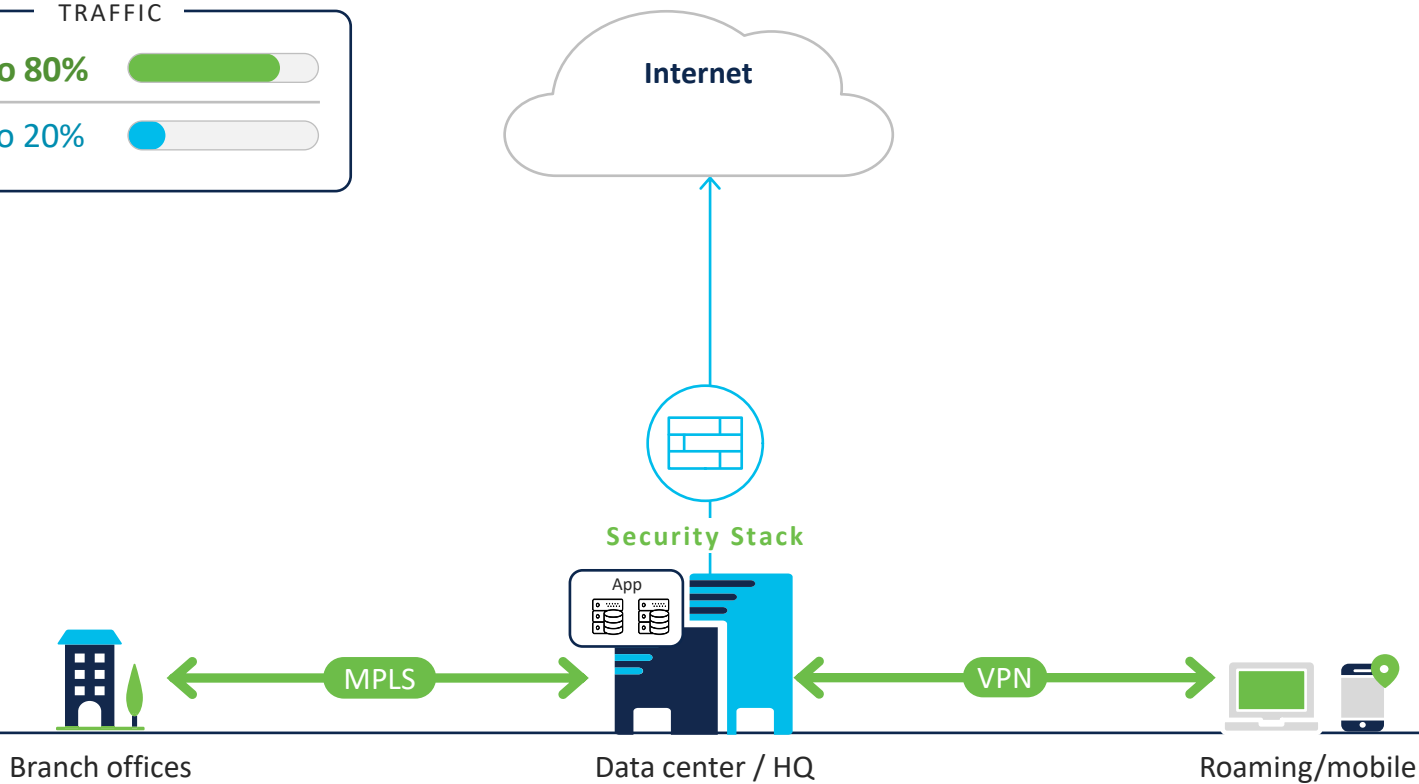
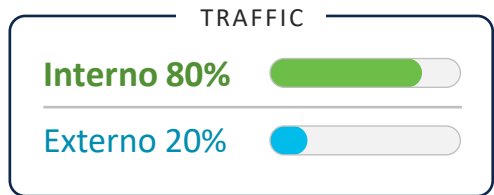
A person wearing a blue and white plaid shirt is sitting at a desk, looking at architectural blueprints. Their hands are clasped together in a thoughtful pose. On the desk, there are several rolled-up blueprints, a smartphone, a calculator, and a pencil. The background shows a modern office setting with a beige armchair and a wooden chair.

Arquitetura

Fundamentos



Algum tempo atrás



Ajudamos a construir redes WAN fantásticas

- ❖ VRF
- ❖ BGP
- ❖ OSPF
- ❖ GRE
- ❖ ECLB
- ❖ PFR
- ❖ IPSLA
- ❖ ACL
- ❖ QOS



Advanced
Routing



Branch offices



MPLS

MPLS

Security Stack



Data center / HQ



Internet



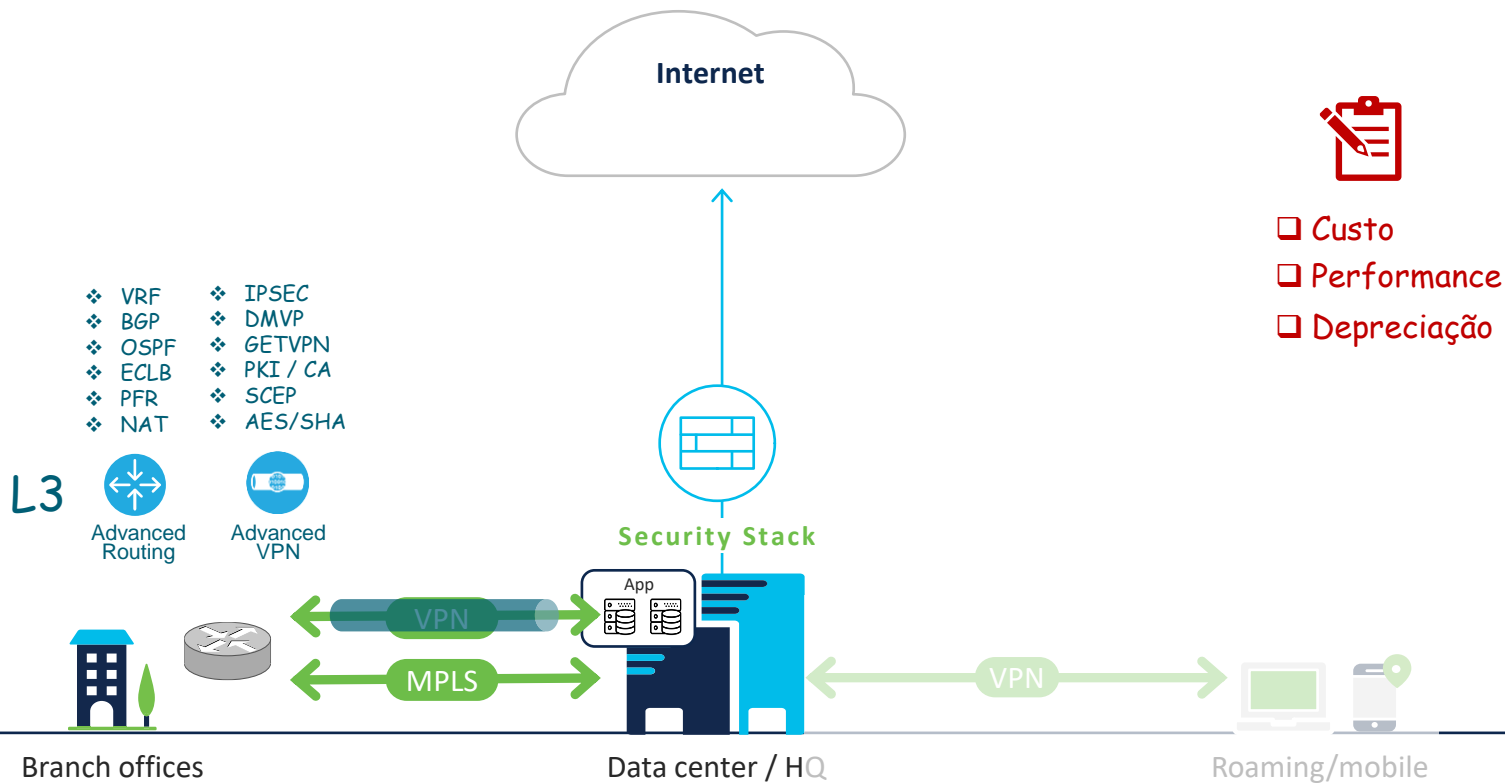
❑ Custo

VPN

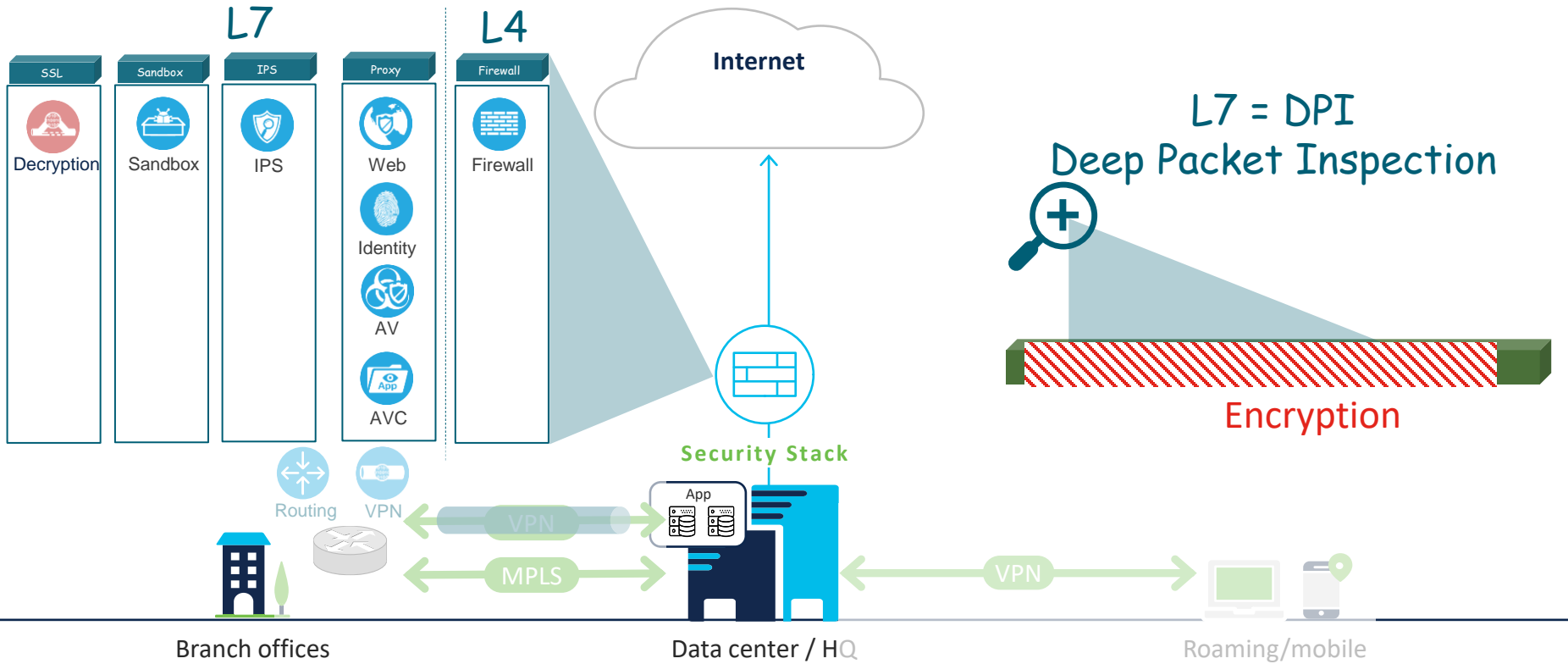


Roaming/mobile

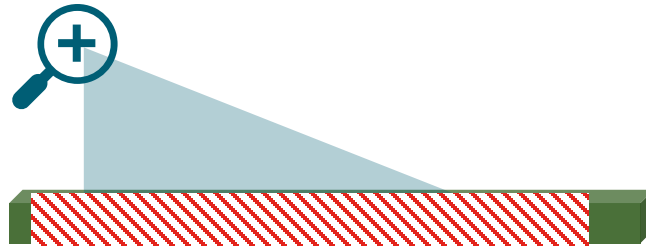
Ajudamos a construir redes iWAN Robustas



E como era a Segurança?



Qual a porcentagem de trafego criptografado?



Encryption
SSL | TLS



- Dashboard
- System
- Network Overview
- Users
- Applications**
- Web Applications
- URL Categories
- Access And SI Rules
- Zones
- Destinations
- Attackers
- Targets
- Threats
- File Logs
- Malware
- SSL Decryption

Applications

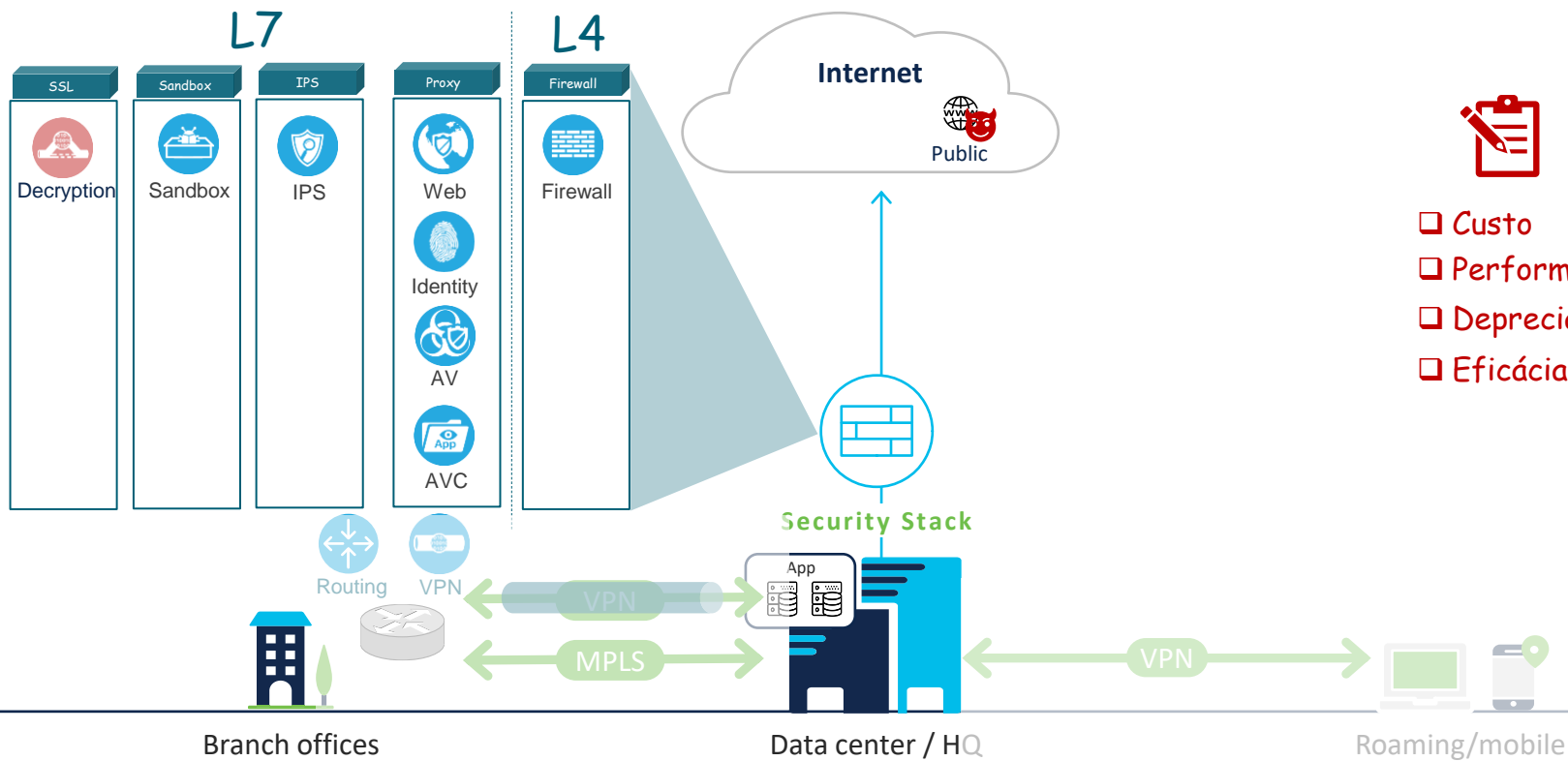
Tue 01 Jun 2021, 7:00 AM (UTC-03) to Thu 01 Jul 2021, 7:59 AM (UTC-03)

Last 30 days

Items shown: 10 Values Percentages

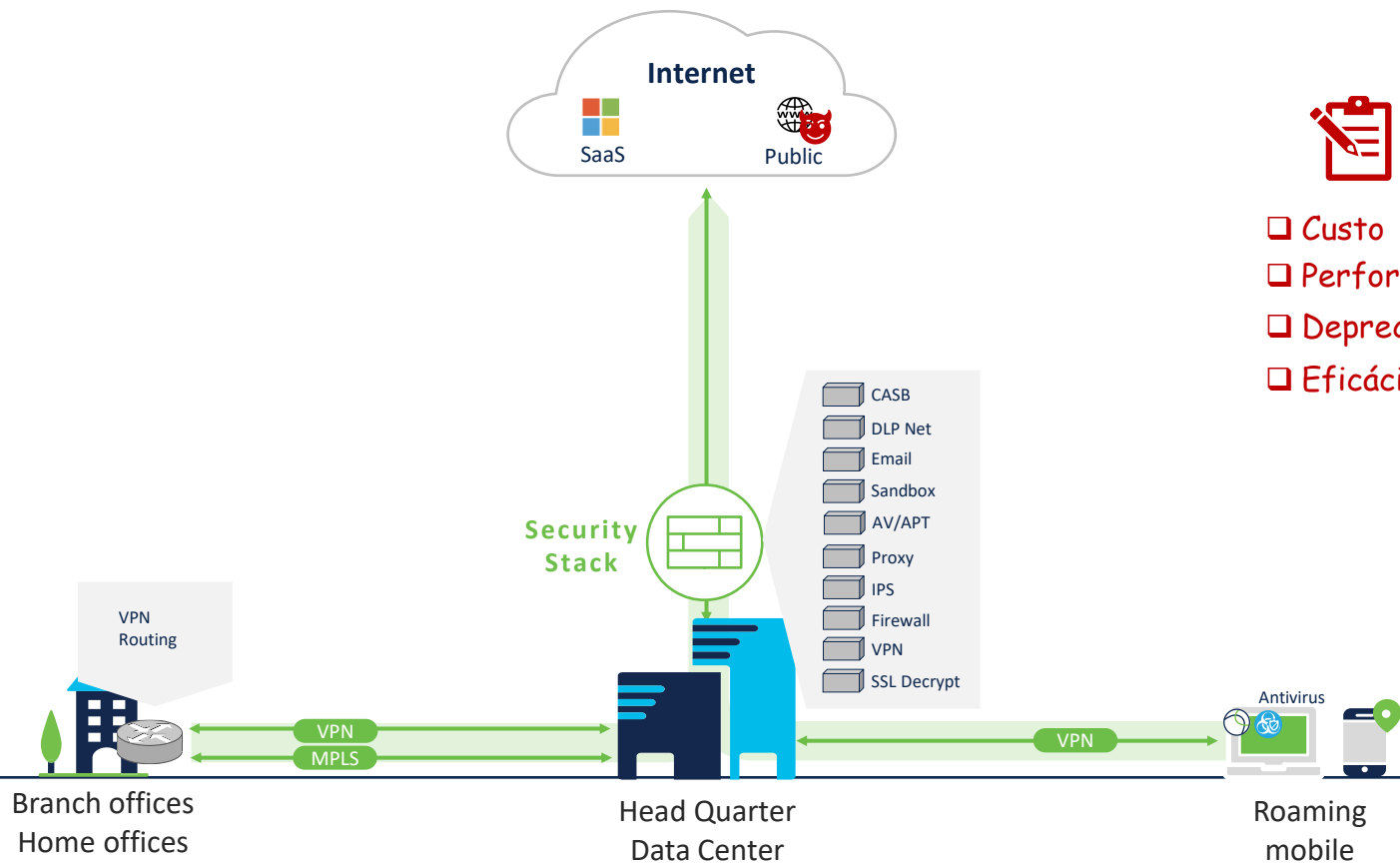
	APPLICATION	TRANSACTIONS	ALLOWED TRANSACTIONS	DENIED TRANSACTIONS	TOTAL BYTES	TOTAL BYTES RECEIVED	TOTAL BYTES SENT
1	HTTPS	42.49%	42.49%	0.00%	89.00%	82.65%	98.52%
2	DNS	41.20%	41.20%	0.00%	0.10%	0.11%	0.08%
3	ICMP	8.96%	8.96%	0.00%	0.02%	0.01%	0.02%
4	STUN	4.15%	4.15%	0.00%	0.06%	0.05%	0.07%
5	HTTP	2.14%	2.14%	0.00%	10.49%	17.04%	0.67%
6	WhatsApp	0.69%	0.69%	0.00%	0.07%	0.04%	0.10%
7	SSL	0.30%	0.30%	0.00%	0.23%	0.04%	0.52%
8	Telegram	0.04%	0.04%	0.00%	0.00%	0.00%	0.00%
9	NTP	0.02%	0.02%	0.00%	0.00%	0.00%	0.00%
10	Supercell	0.01%	0.01%	0.00%	0.02%	0.03%	0.00%

Proteção de Perímetro Tradicional



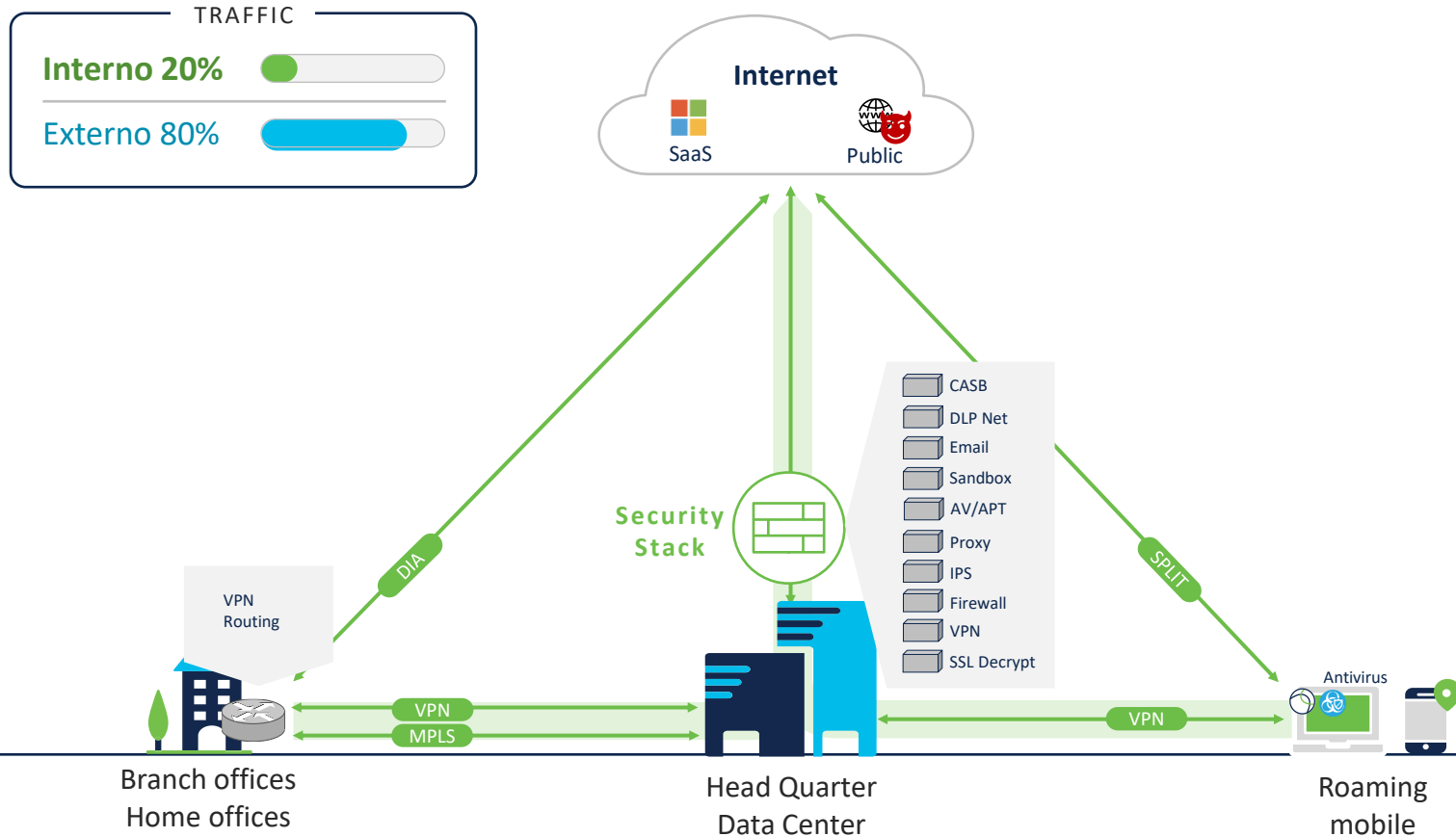
- Custo
- Performance
- Depreciação
- Eficácia

Abordagem tradicional em Segurança

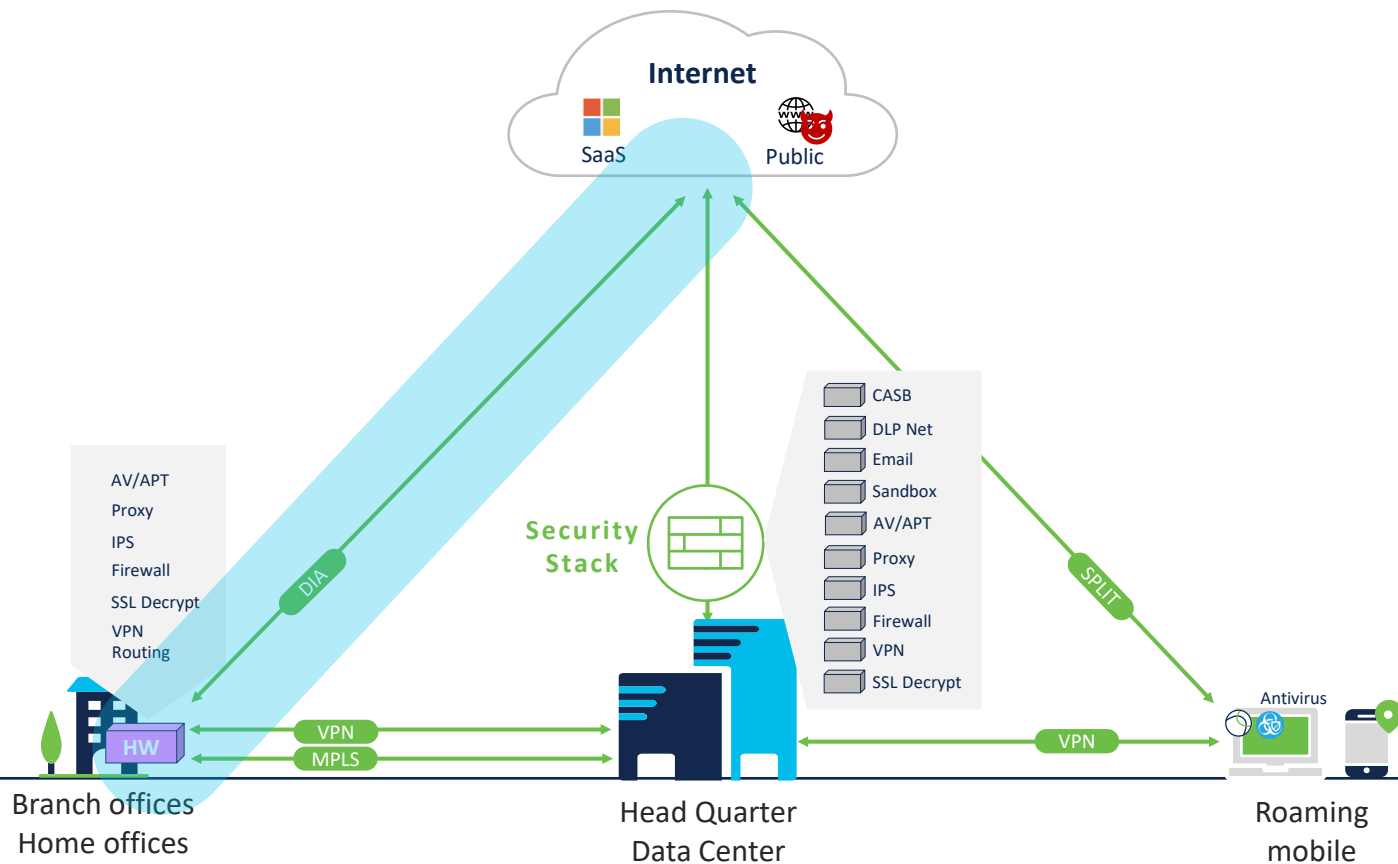


- Custo
- Performance
- Depreciação
- Eficácia

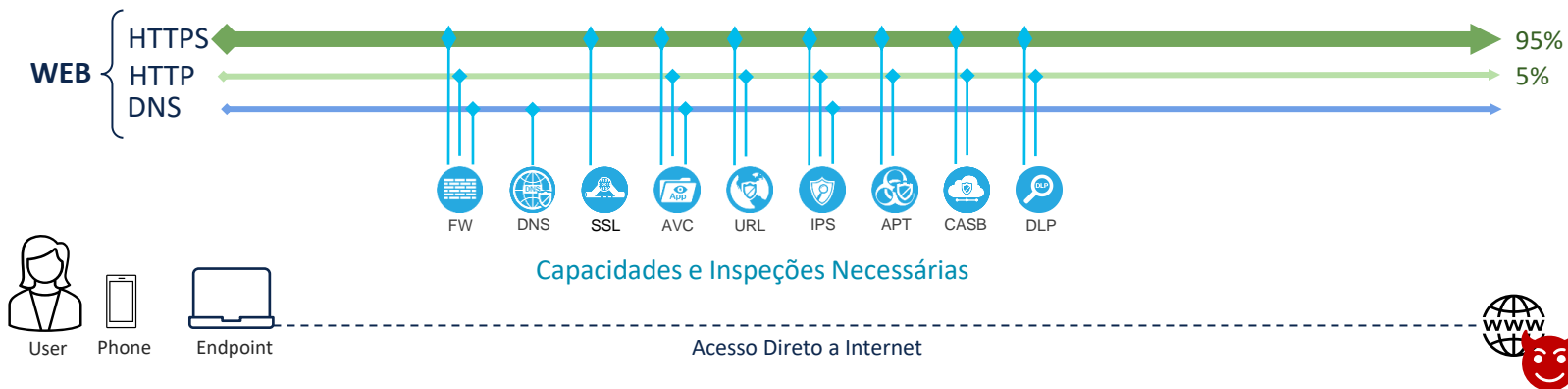
Abordagem tradicional em Segurança



Abordagem tradicional em Segurança

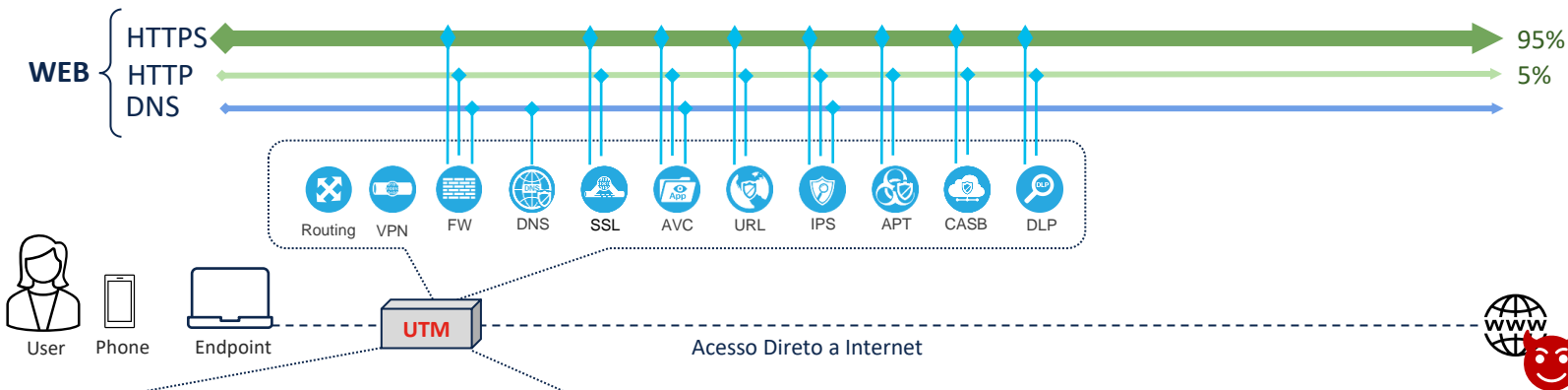


Proteção Fluxo Internet WEB



WEB e Email são os dois maiores vetores de ataque
Ransomware's exploram DNS e HTTPS (SSL) em suas comunicações
Comando e controle, Exfiltração de dados

Segurança On-Premises | UTM “SDWAN”



System Performance — Enterprise Traffic Mix	
IPS Throughput ²	1.4 Gbps
NGFW Throughput ^{2,4}	1 Gbps
Threat Protection Throughput ^{2,5}	700 Mbps
System Performance	
Firewall Throughput (1518 / 512 / 64 byte UDP packets)	10/10/6 Gbps
Firewall Latency (64 byte UDP packets)	3.3 µs
Firewall Throughput (Packets Per Second)	9 Mpps
Concurrent Sessions (TCP)	700 000
New Sessions/Second (TCP)	35 000
SSL-VPN Throughput	900 Mbps
Concurrent SSL-VPN Users (Recommended Maximum, Tunnel Mode)	200
SSL Inspection Throughput (IPS, avg. HTTPS) ³	630 Mbps
SSL Inspection CPS (IPS, avg. HTTPS) ³	400
SSL Inspection Concurrent Session (IPS, avg. HTTPS) ³	55 000



Hardware

Finito

Note: All performance values are “up to” and vary depending on system configuration.

¹ IPsec VPN performance test uses AES256-SHA256.

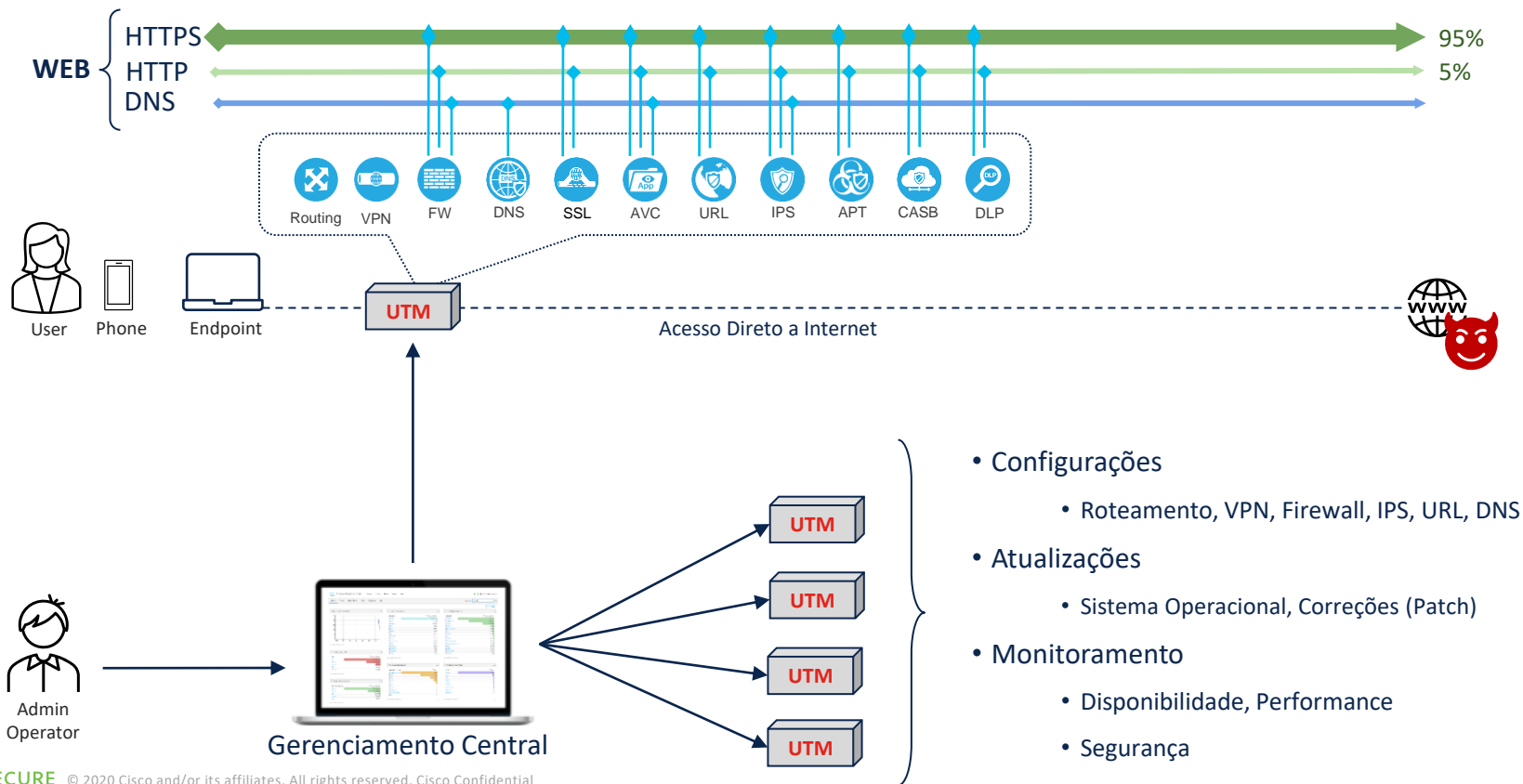
² IPS (Enterprise Mix), Application Control, NGFW and Threat Protection are measured with Logging enabled.

³ SSL inspection performance values use an average of HTTPS sessions of different cipher suites.

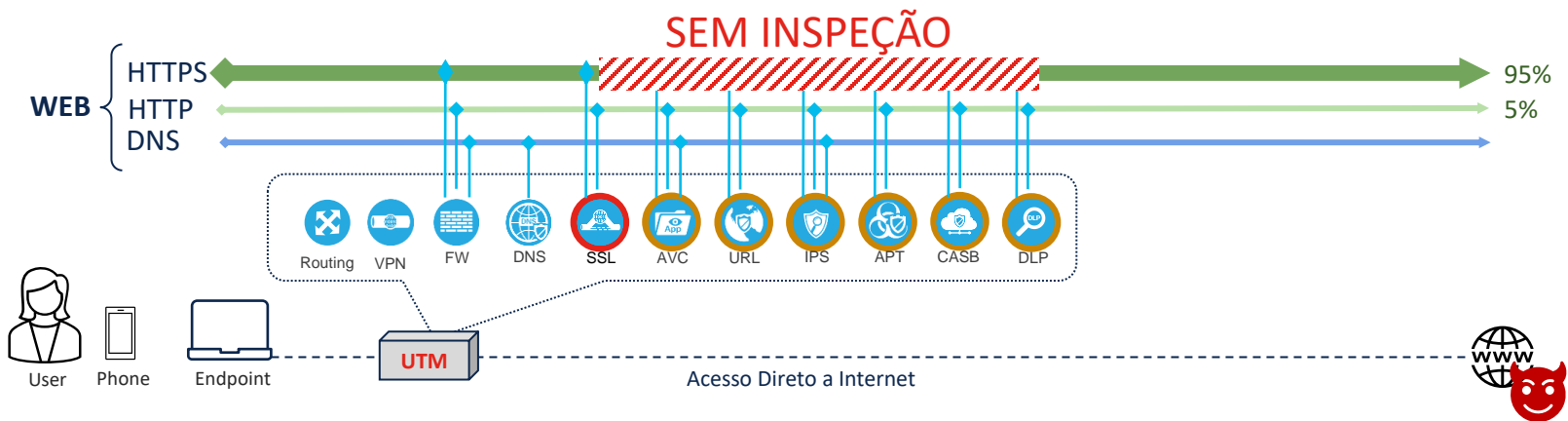
⁴ NGFW performance is measured with Firewall, IPS and Application Control enabled.

⁵ Threat Protection performance is measured with Firewall, IPS, Application Control and Malware Protection enabled.

Operação On-Premises | UTM “SDWAN”



Segurança On-Premises | UTM “SDWAN”



- Inspeção de segurança em hardware (CPE, UTM, NGFW, SDWAN)
- **Performance Finita!**
- Inspeções avançadas “L7” consomem processamento
- SSL Decryption consome **MUITO** processamento
- Risco de comprometer a longevidade do projeto

ALTO RISCO



CW
LIVE NEWS

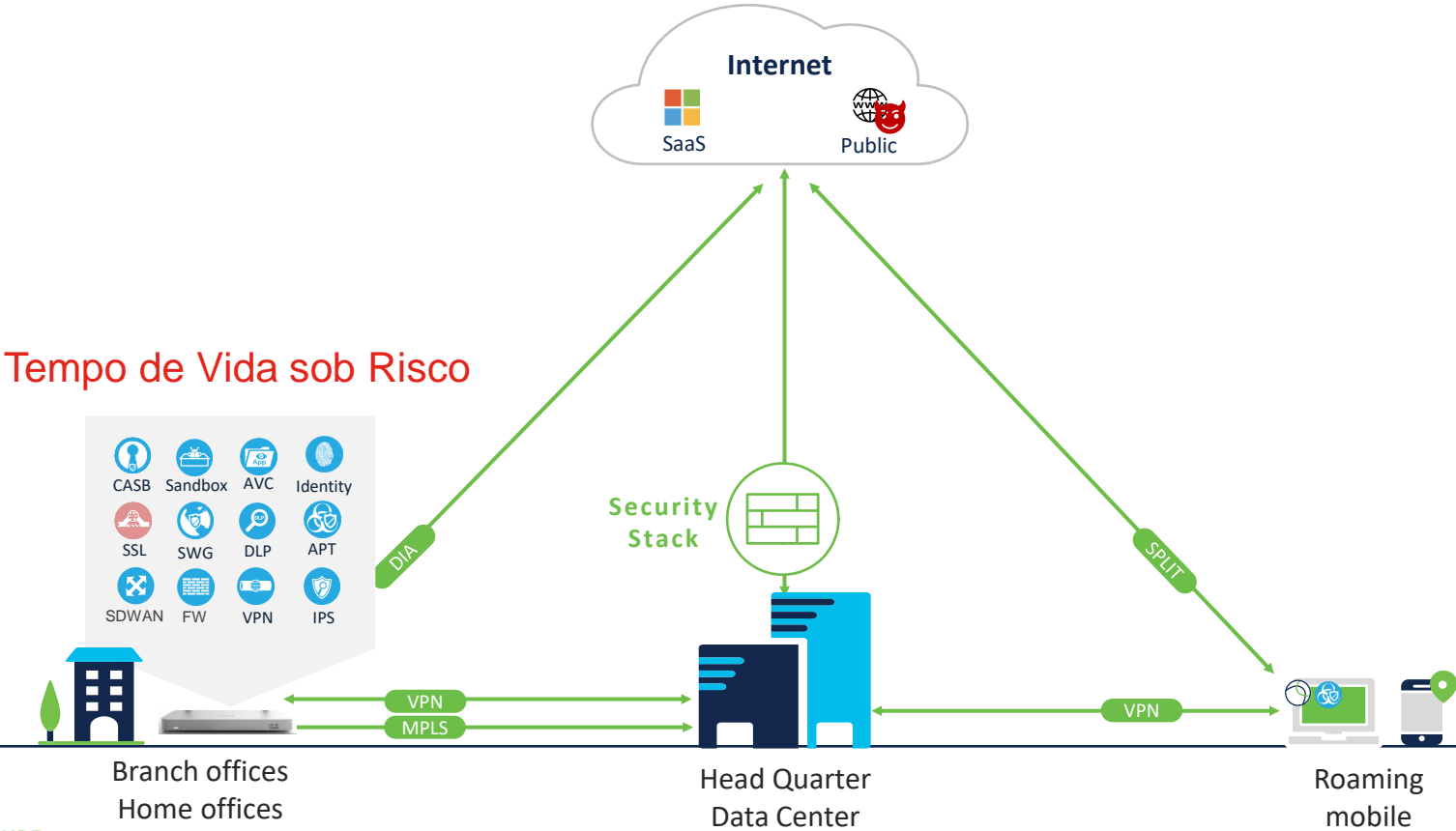
CW
LIVE NEWS



BREAKING NEWS

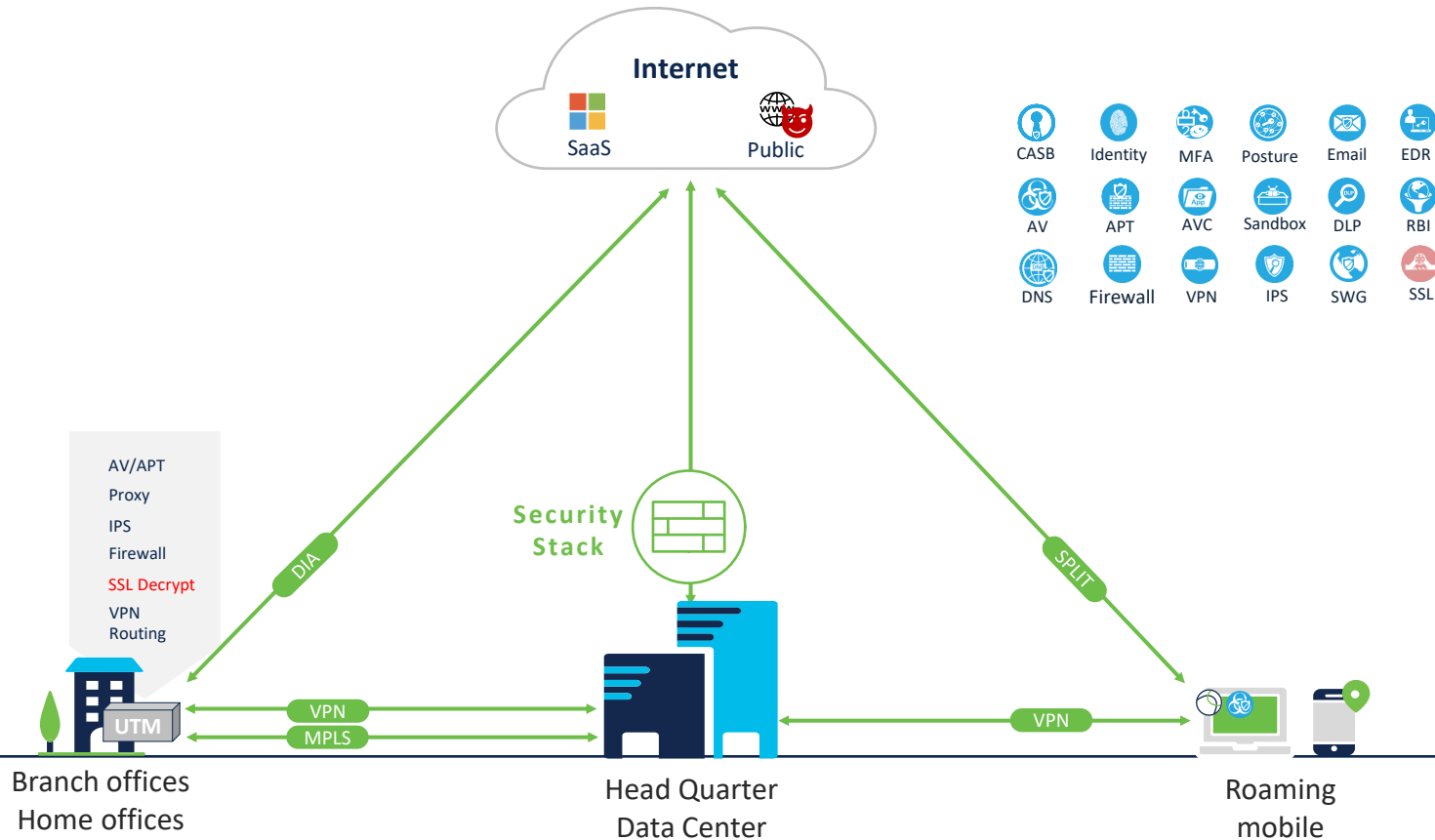
**SOURCES: PIPELINE COMPANY HASN'T PAID BITCOIN RANSOM,
STILL NOT CLEAR IF THEY HAVE FULLY EJECTED HACKERS**

Segurança On-Premises | UTM “SDWAN”

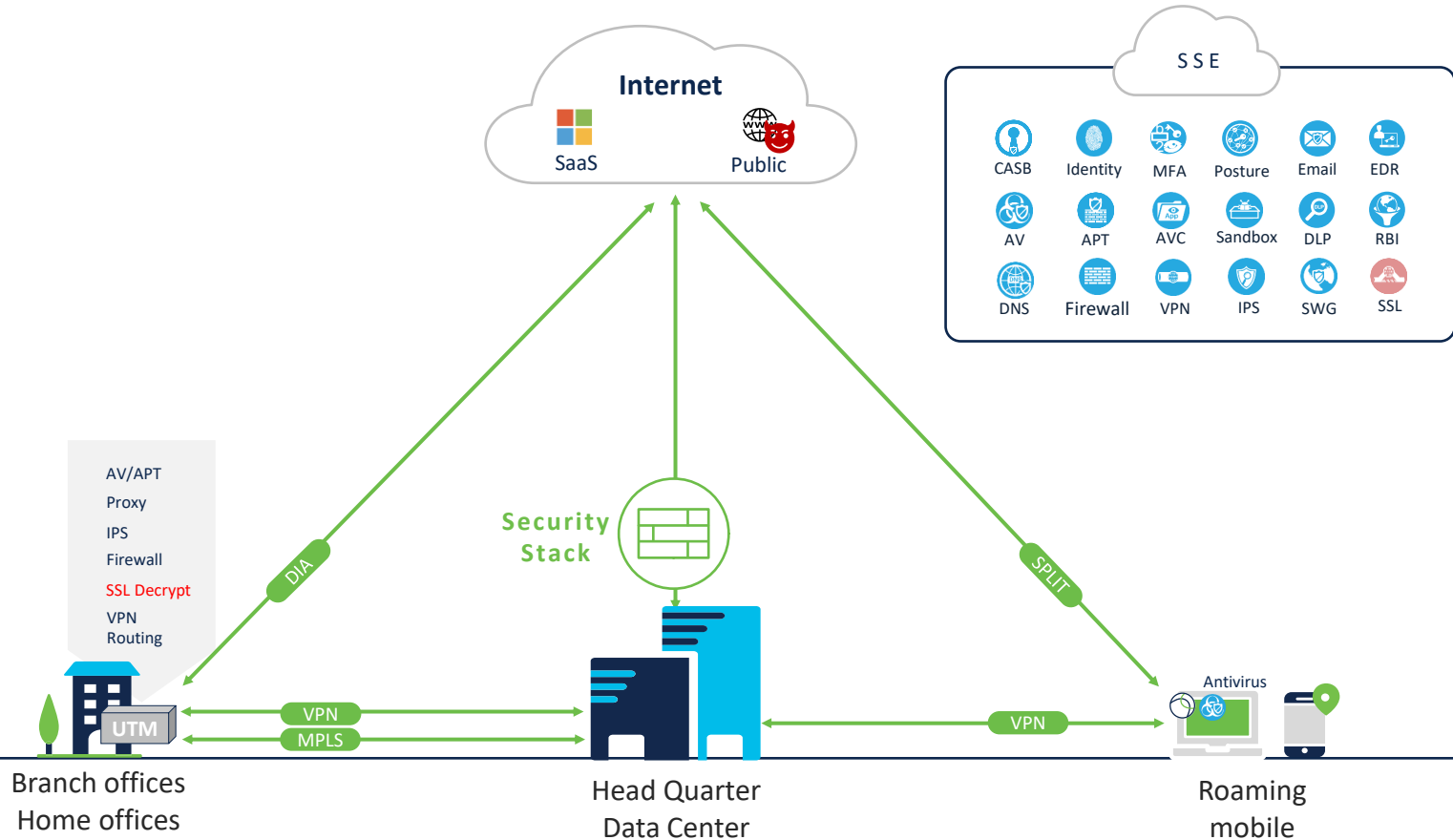


Tempo de Vida sob Risco

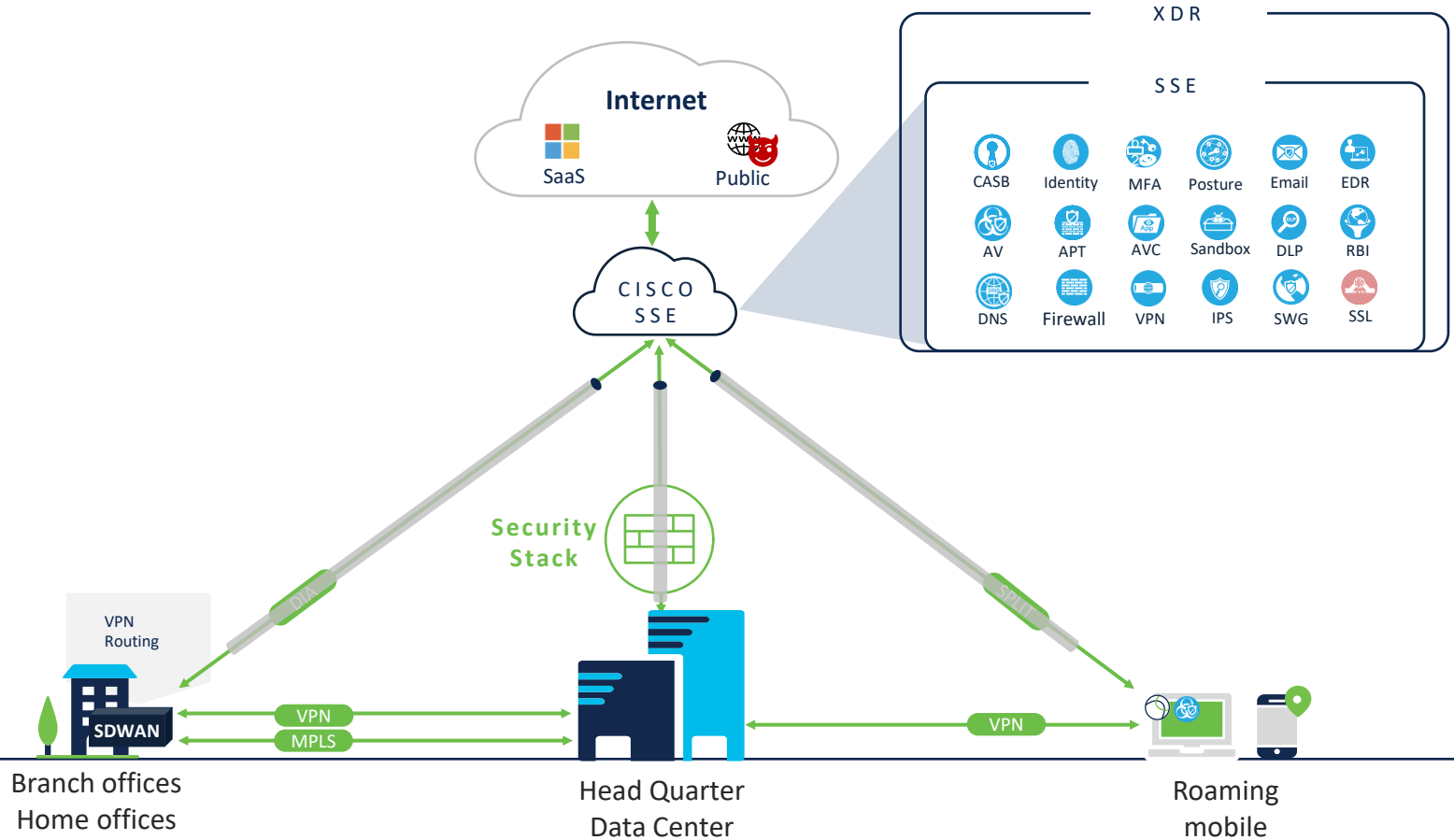
Estratégia de Defesa Moderna



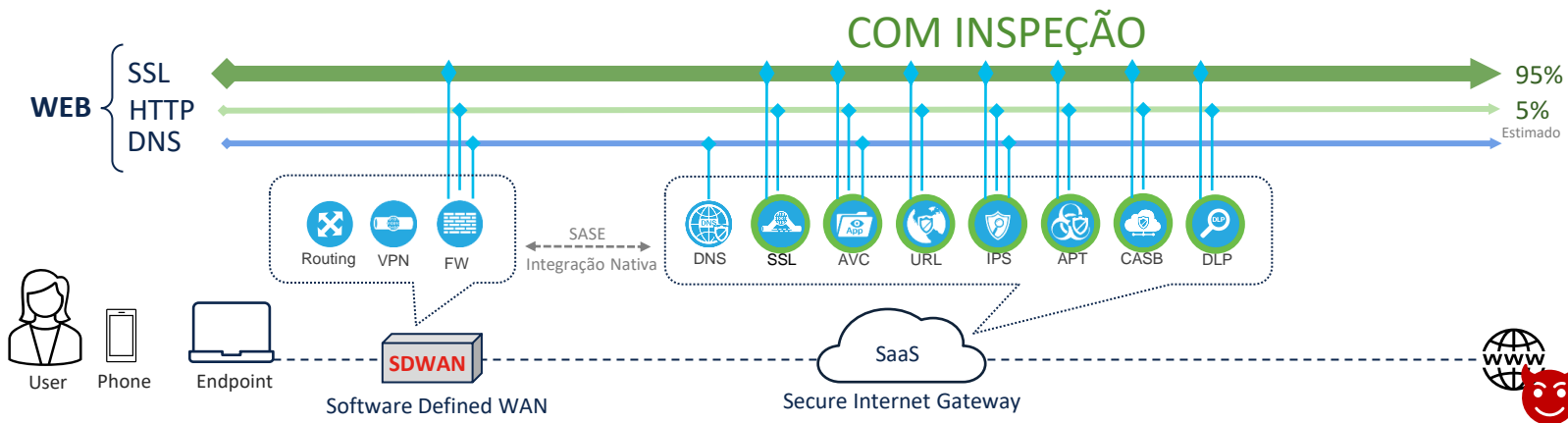
Estratégia de Defesa Moderna



Estratégia de Defesa Moderna



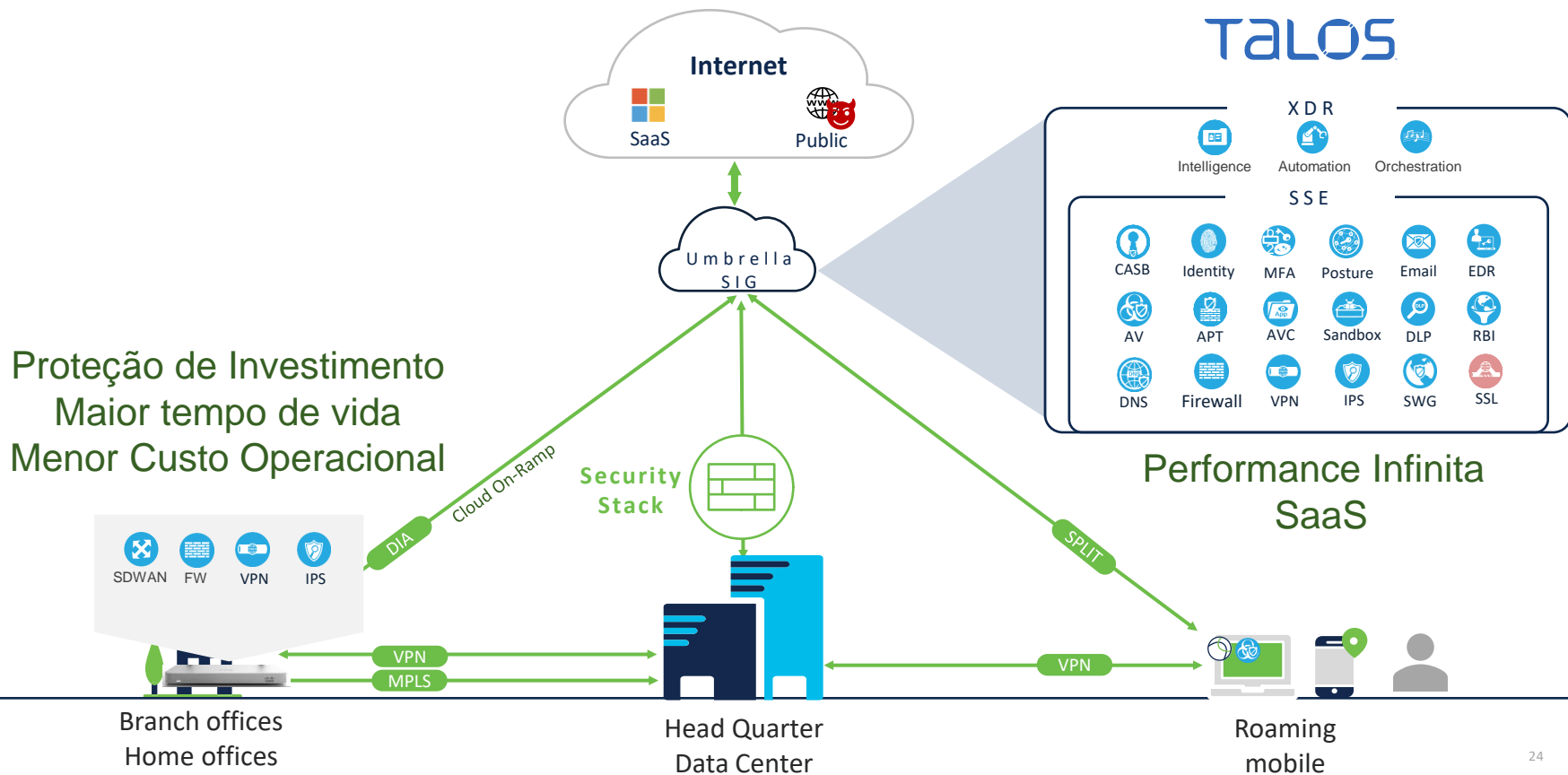
Segurança Cloud | SaaS (Security-as-a-Service), SSE/SASE



- Hardware dimensionado com capacidades de roteamento avançado SDWAN, segmentação, visibilidade de aplicações e telemetria
- Escalabilidade, automação, integração nativa com a nuvem
- Menor custo operacional, “Zero Touch Provisioning” e gestão de mudanças globais
- Facilita a integração e gestão entre Redes e Segurança

- Consumo de serviços, subscrição periódica
- **Performance Infinita – todas as inspeções ativadas simultaneamente**
- Redução de custo operacional eliminando atividades de planejamento de capacidade, atualizações, correções.
- Protege dispositivos remotos

Plataforma SDWAN Seguro - Cisco SASE





Fernando Zamai

Cybersecurity Leader
for Cisco do Brasil



fzamai@cisco.com



<https://www.linkedin.com/in/fzamai/>



fzamai@cisco.com





SECURE