

Developer Days  
Automation



The bridge to possible

# Cisco Crosswork Workflow Manager

Bridging the gap from Automation to Operations

Lou Menditto  
Product Line Manager, Cisco Systems, Inc  
May 9, 2023



# Market Study: Automation of Change Management Workflows

## Common Themes Noted

- Want to reduce the skill levels required for creating Workflows
- To be successful, Automation Workflow must pose low risk to the operation of the network.
  - Start small, with simple workflows, and grow as they gain expertise and confidence
  - In the future it is expected that some workflows may be running at all hours of the day.
- Need to integrate to their Change Management process – currently document-based (MOPS)
- The scope of a workflow is broader than the devices it queries or provisions. The workflow engine must integrate access to multiple OSS systems in
  - gathering information for processing,
  - preparing the intended changes,
  - communicating to the operations or administration staff, and
  - validating the outcome of the workflow.
- Want to retain the strength and multi-vendor capabilities of NSO
- Need integration to Inventory and Status components

## Market priorities:

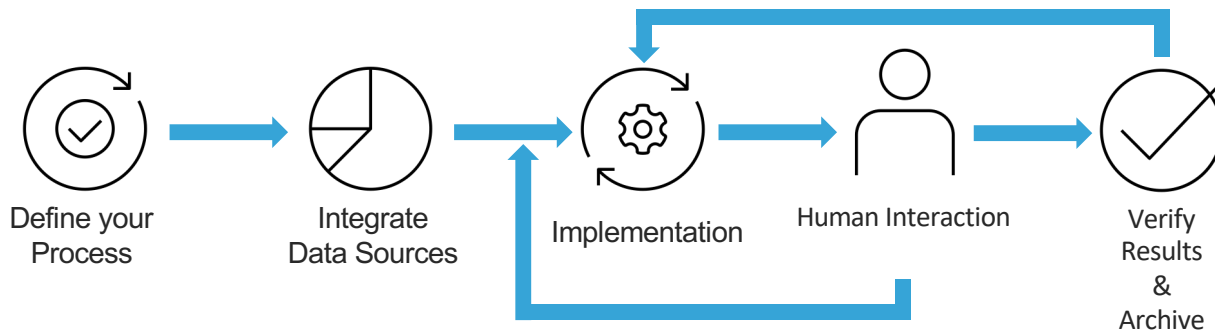
- On-prem, TAC-supported product.
- High reliability, low risk
- Operational visibility (tracking, monitoring, management)
- Customization: Ability to code workflows and custom adapters
- Initial adapters:
  - NSO
  - REST for integration to systems supporting REST APIs

# Why a Workflow Manager

## Common Network Administration Tasks

- Which router OS levels am I running?
- Patch and Security Update Installation
- Compliance to standardized configurations
- On-boarding of new equipment
- Service deployment

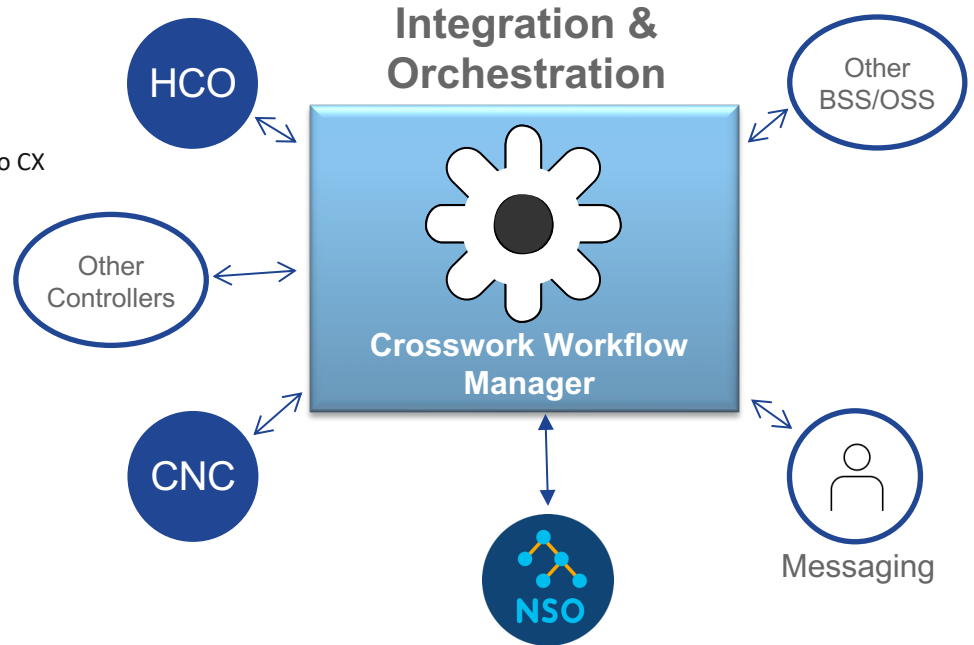
## Automate the Change Management for your Network with Confidence and Repeatability.



## Build the Workflows to fit Your needs.

# Crosswork Workflow Manager (CWM) 1.0

- Highly flexible workflow programmability
  - Domain-specific language for workflows
  - SDK for adapters for integration
  - For customers that prefer to outsource the use case development, Cisco CX can offer contracted services using CWM.
- Operational Control of Workflows
  - Job status
  - Repository for workflows
  - Administration functions
  - Role-based Access Controls for User Management
- Integration
  - Open for integration to 3<sup>rd</sup> party multi-vendor infrastructure via API
    - Swagger available for all REST API calls
  - Within Cisco portfolio, will be the programmable element for orchestrating our rich set of automation "Action" tools



CWM Limited Availability release, coming this Summer

# Fully flexible workflow capability

CWM is the execution engine.

Customer writes the workflow per their use case.

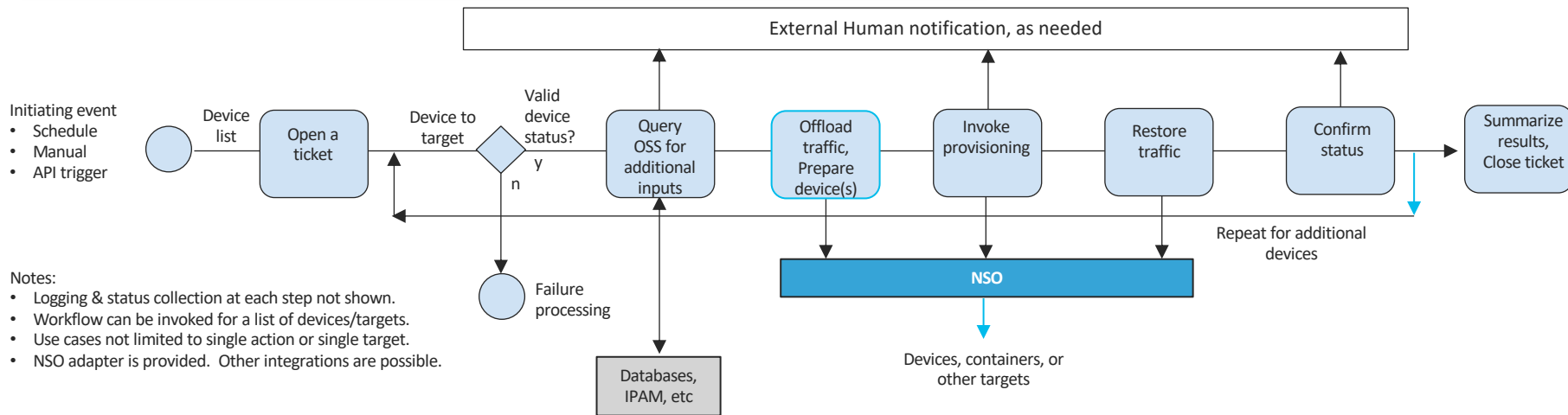
- Customer defines the actions, integrations, and complexity
- Completely customizable

## Transforming your change management process from a chore to a science

- Repeatable workflows – mitigate human error
- Faster time to design using reusable elements
- Integration possible to all steps of change management process, and tracking

## Highly adaptable

- Multi-vendor
- Flexible Integration
  - Adapters provided for NSO and REST APIs
  - Adapter development kit is provided



## Fully flexible workflow capability

CWM is the execution engine.

Customer writes the workflow per their use case.

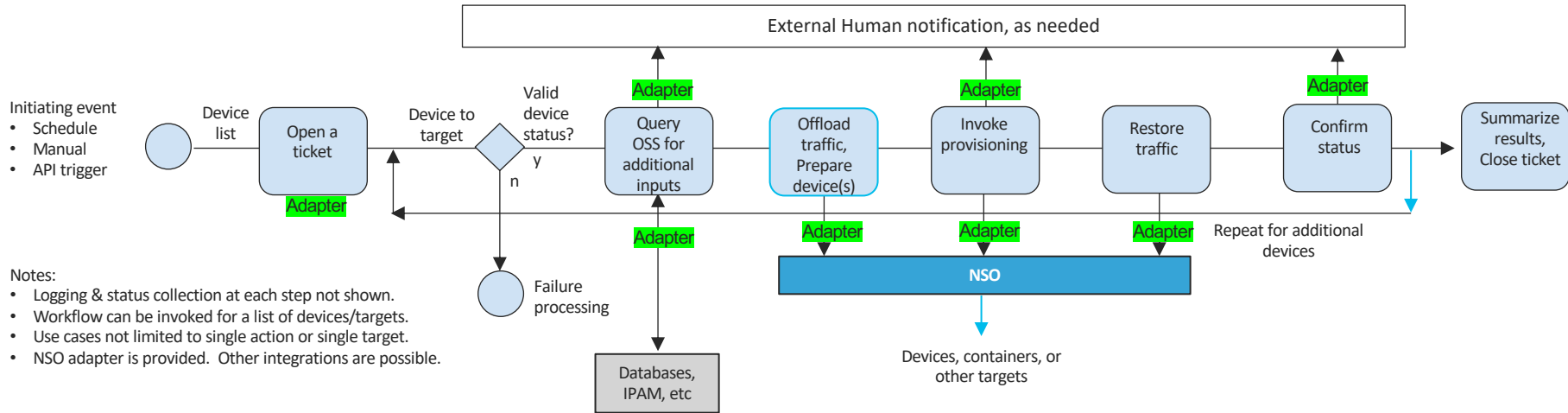
- Customer defines the actions, integrations, and complexity
- Completely customizable

### Transforming your change management process from a chore to a science

- Repeatable workflows – mitigate human error
- Faster time to design using reusable elements
- Integration possible to all steps of change management process, and tracking

### Highly adaptable

- Multi-vendor
- Flexible Integration
  - Adapters provided for NSO and REST APIs
  - Adapter development kit is provided



### Notes:

- Logging & status collection at each step not shown.
- Workflow can be invoked for a list of devices/targets.
- Use cases not limited to single action or single target.
- NSO adapter is provided. Other integrations are possible.

# Crosswork Workflow Manager

Ability to Visualize, Test, and Reuse automation workflows

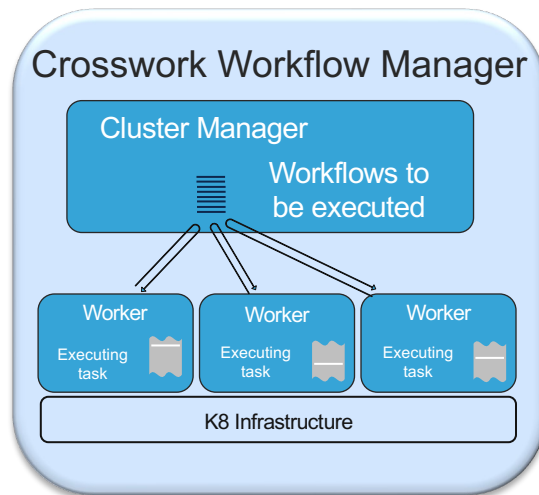
## Strengths of the CWM offering

### Ultra Reliability – Never Drop Any Work

- Workflows as critical tasks:
  - Resumable (suspend/resume)
  - Recoverable from failures
  - Responsive to outside signaling
- PostgreSQL DB with extensive reliability capabilities.

### Flexibility

- Workflows can be written in JSON or YAML  
<https://github.com/serverlessworkflow/specification>
- Integrate to customer OSS/BSS via Adapters.
  - Protobuf for definition of structured data between adapters.
  - Adapter SDK provides ability to build your own custom adapters



### Management

- Logging of all progress
- Metrics reporting

### High Scalability

- Capable of running thousands of workflows
- Horizontal scaling  
(in 1.0, within a single node).
- Workers consume workflows as they become available.

### APIs for Machine-to-Machine integration

- REST API is available for all interaction with the system.
- Includes publishing workflows, instantiating instances, managing workers, etc.



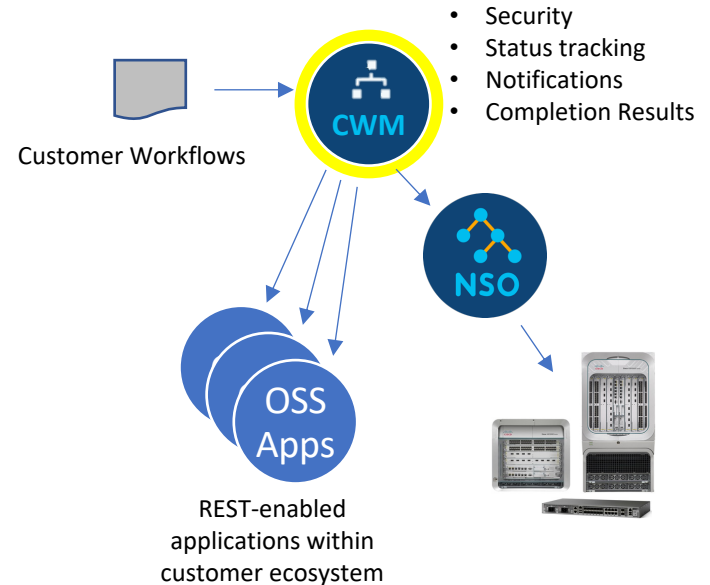
# CWM 1.0 Capabilities



# CWM 1.0 Offering

As a workflow engine, CWM allows you to define all manner of workflows. The CWM package contains:

- ✓ Workflow Engine. On-prem, multi-user.
- ✓ Kubernetes-based infrastructure and management interfaces.
- ✓ Pre-packaged adapters
  - NSO
  - Generic REST
    - Enables general communication to any number of controllers or BSS/OSS systems with REST interfaces
- ✓ Sample workflows
  1. Simple Router file download (CSR1Kv with IOS-XE) using NSO Adapter
  2. Using REST adapter to interface NetBox for IPAM
- ✓ Adapter SDK which enables administrator to build custom integrations to their management applications
- ✓ Simple installation as a VMware OVA with Alma Linux
  - Minimum footprint is single VM



# Infrastructure and Management

Included in the CWM download package:



PostgreSQL

V 14.5

Database  
Private schema only.

MINIO

2022-12-12T19-27-27Z

Log storage



Grafana loki

2.6.1

Log aggregation



Timescale

2.9.1-pg15

Time series DB,  
used for Metrics storage

Customers can further integrate to their own versions of these tools:



Prometheus

v2.0 and above

Metrics collection

Customer integration. Not included in the package.  
CWM delivers with TimescaleDB. Requires Promscale to interface these to Prometheus



Grafana

v2.5 and above

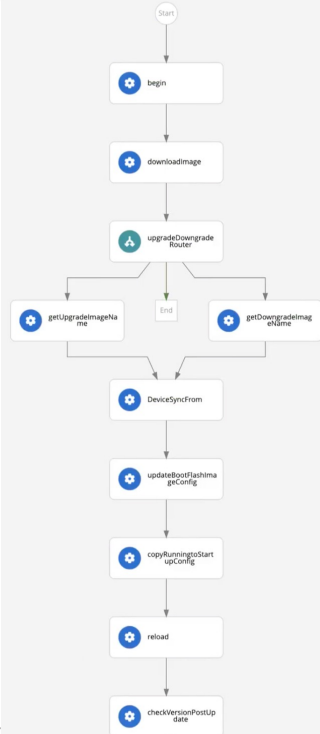
Metrics visualization  
Log visualization

Customer integration. Not included in the package.

# Sample Workflow: Router Upgrade/Downgrade

## Upgrade/Downgrade Steps & Flow Diagram

- Check Version
- Download Image(s)
- Check if Upgrade/Downgrade
- Get Name of image to use
- Perform Sync From
- Update Router Configuration – set boot system
- Copy Running Config to Start (to reboot with new image)
- Reload – Reboot router
- Check version post image Update



Note: For simplicity, this Demo downloads both images to the router and then selects which one to use as boot image. In real life a customer may want to be more selective up front.

## Workflow Definition (snippets)

```
100  "name": "getRunningImageVersion",
101  "description": "Get version of running image",
102  "parameters": {
103    "type": "object",
104    "properties": {
105      "hostname": {
106        "type": "string",
107        "description": "Router hostname",
108        "required": true
109      },
110      "username": {
111        "type": "string",
112        "description": "Username",
113        "required": true
114      },
115      "password": {
116        "type": "string",
117        "description": "Password",
118        "required": true
119      }
120    },
121    "required": ["hostname", "username", "password"]
122  },
123  "actions": [
124    {
125      "name": "getRunningImageVersion",
126      "description": "Get version of running image",
127      "type": "cli",
128      "command": "show version",
129      "args": {}
130    }
131  ],
132  "outputs": [
133    {
134      "name": "version",
135      "description": "Version of running image",
136      "type": "string"
137    }
138  ]
139}
```

Get version of running image

```
140  "name": "updateBootFlashImageConfig",
141  "description": "Update boot flash image config",
142  "parameters": {
143    "type": "object",
144    "properties": {
145      "hostname": {
146        "type": "string",
147        "description": "Router hostname",
148        "required": true
149      },
150      "username": {
151        "type": "string",
152        "description": "Username",
153        "required": true
154      },
155      "password": {
156        "type": "string",
157        "description": "Password",
158        "required": true
159      },
160      "bootImage": {
161        "type": "string",
162        "description": "Boot image name",
163        "required": true
164      }
165    },
166    "required": ["hostname", "username", "password", "bootImage"]
167  },
168  "actions": [
169    {
170      "name": "updateBootFlashImageConfig",
171      "description": "Update boot flash image config",
172      "type": "cli",
173      "command": "boot system flash bootImage",
174      "args": {}
175    }
176  ],
177  "outputs": [
178    {
179      "name": "bootImage",
180      "description": "Boot image name",
181      "type": "string"
182    }
183  ]
184}
```

updateBootFlashImageConfig

```
185  "name": "decisionUpgradeOrDowngrade",
186  "description": "Decision: upgrade or downgrade",
187  "parameters": {
188    "type": "object",
189    "properties": {
190      "hostname": {
191        "type": "string",
192        "description": "Router hostname",
193        "required": true
194      },
195      "username": {
196        "type": "string",
197        "description": "Username",
198        "required": true
199      },
200      "password": {
201        "type": "string",
202        "description": "Password",
203        "required": true
204      },
205      "currentVersion": {
206        "type": "string",
207        "description": "Current version",
208        "required": true
209      },
210      "newVersion": {
211        "type": "string",
212        "description": "New version",
213        "required": true
214      }
215    },
216    "required": ["hostname", "username", "password", "currentVersion", "newVersion"]
217  },
218  "actions": [
219    {
220      "name": "decisionUpgradeOrDowngrade",
221      "description": "Decision: upgrade or downgrade",
222      "type": "cli",
223      "command": "if [ $currentVersion < $newVersion ]; then echo 'Upgrade'; else echo 'Downgrade'; fi",
224      "args": {}
225    }
226  ],
227  "outputs": [
228    {
229      "name": "decision",
230      "description": "Decision: upgrade or downgrade",
231      "type": "string"
232    }
233  ]
234}
```

Decision: upgrade or downgrade

```
235  "name": "copyRunningConfigToStartupConfig",
236  "description": "Copy running config to startup config",
237  "parameters": {
238    "type": "object",
239    "properties": {
240      "hostname": {
241        "type": "string",
242        "description": "Router hostname",
243        "required": true
244      },
245      "username": {
246        "type": "string",
247        "description": "Username",
248        "required": true
249      },
250      "password": {
251        "type": "string",
252        "description": "Password",
253        "required": true
254      }
255    },
256    "required": ["hostname", "username", "password"]
257  },
258  "actions": [
259    {
260      "name": "copyRunningConfigToStartupConfig",
261      "description": "Copy running config to startup config",
262      "type": "cli",
263      "command": "copy running-config startup-config",
264      "args": {}
265    }
266  ],
267  "outputs": [
268    {
269      "name": "copyRunningConfigToStartupConfig",
270      "description": "Copy running config to startup config",
271      "type": "string"
272    }
273  ]
274}
```

copyRunningConfigToStartupConfig

# Operations User Interface

Focus of User Interface work for this release has been on Operations and Management

- Administration
- Status tracking
- Archival of workflow activities and results
- Logging

UI replicates similar look and feel as Cisco Crosswork

Details formatting is subject to minor change between now and actual General Availability of the product.

# CWM – Job Tracking

The following are aimed at Operational Awareness for Workflows that have been scheduled, running, or completed.

- Conceptually a customer may have hundreds of workflows once the platform becomes key for their operational needs.
- An admin must have the ability to track workflows, and then be able to dive further for more details.

Managing large numbers of Workflows, by list

Each executing workflow is tracked by the USERID who started it, and specific information about the job. Filtering capability is available.

Job Details

Within a scheduled workflow, the customer can display the set of activities and expand further into the activity itself.

Job name	Run ID	Status	Completed activities	Start date	End date	Duration	Actions
Job 1	123	Running	2	7/7/2022 9:35:35 AM	In progress	-	Cancel
Job 2	13	Terminated	3	7/7/2022 9:35:35 AM	7/7/2022 9:35:35 AM	5h 13m 5s	Run
Job 3	456789	Failed	24	7/7/2022 9:35:35 AM	7/7/2022 9:35:35 AM	5h 13m 5s	Run
Job 4	789999	Timed out	3	7/7/2022 9:35:35 AM	7/7/2022 9:35:35 AM	5h 13m 5s	Run
Job 5	1234	Completed	88	7/7/2022 9:35:35 AM	7/7/2022 9:35:35 AM	5h 13m 5s	Run
Job 6	98777	Completed	65	7/7/2022 9:35:35 AM	7/7/2022 9:35:35 AM	5h 13m 5s	Run
Job 7	998989898989898989	Completed	9	7/7/2022 9:35:35 AM	7/7/2022 9:35:35 AM	5h 13m 5s	Run
Job 8	6565656	Cancelled	2	7/7/2022 9:35:35 AM	7/7/2022 9:35:35 AM	5h 13m 5s	Run
Job 9	32222	Running	3	7/7/2022 9:35:35 AM	In progress	-	Cancel
Job 10	1	Completed	1234	7/7/2022 9:35:35 AM	7/7/2022 9:35:35 AM	5h 13m 5s	Run

Activity name	Activity type	Status	Attempts	Worker	Start time	End time	Assigne
Workflow execution started	Workflow execution	Completed	1	worker1	7/7/2022 9:35:35 AM	7/7/2022 9:35:36 AM	Automatic
Activity 1	ActivityTask	Completed	1	worker1	7/7/2022 9:35:35 AM	7/7/2022 9:37:36 AM	Automatic
Activity 3	ActivityTask	Running	1	worker1	7/7/2022 9:35:35 AM	-	Automatic
Activity 4	ActivityTask	Scheduled	1	worker1	Not started	-	Automatic
Activity 5	ActivityTask	Scheduled	1	worker1	Not started	-	Automatic

# Licensing

Crosswork Workflow Manager is an included entitlement within the Crosswork Essentials Suite

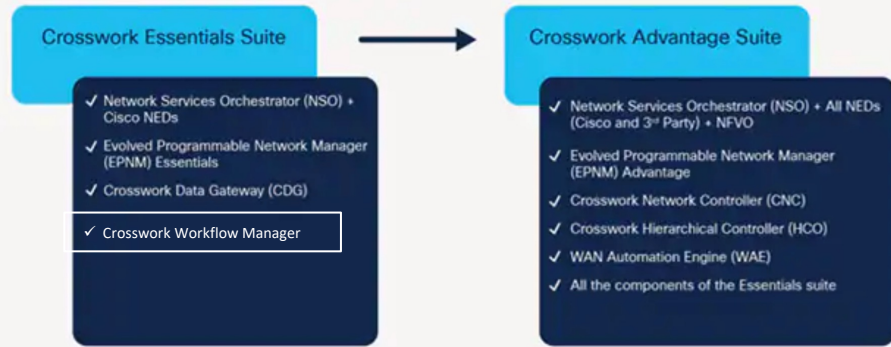
Customers with existing entitlement for the Suite are entitled to use Crosswork Workflow Manager at no extra charge.

- Subject to limitations for RTM licenses that they own.

The Crosswork Advantage package may be needed for customers wanting to leverage the additional functionality from the added components.

# CWM as part of Crosswork Essentials Suite

## Crosswork Essentials and Advantage Suites Embedded Product Components



Crosswork Workflow Manager is our newest addition to the Crosswork Essentials Suite

## Licensing

Crosswork Essentials and Advantage are sold as suites. Customers interested in individual applications from the suite should consider a la carte options for each of the applications.

The licensing of the Crosswork Automation suites is based on three factors:

1. A flat annual fee that grants you access (Right to Use or RTU) to the base application software included in the suite
2. A per-device Right-To-Manage (RTM) fee
3. 1-year to 5-year term contracts

Please refer to the Cisco Crosswork Essentials and Advantage Suites Data Sheet on Cisco.com for details on these packages.

Table 1. Crosswork Essentials and Crosswork Advantage Top-Level Assemble-to-Order (ATO) Details

Product Number	Description
SPAUTO-CWS	Cisco Crosswork Automation Suite ATO

Cisco Crosswork Essentials and Crosswork Advantage PIDs can be found under the top-level assemble-to-order (ATO) PID below. This top-level ATO is searchable and orderable in [Cisco Commerce Workspace \(CCW\)](#).

Table 2. Base Application Right-to-Use (RTU) Platform Details

Product Number	Description
CWS-E-RTU-K9	Crosswork Essential RTU
CWS-A-RTU-K9	Crosswork Advantage RTU

# Early user feedback

‘Our workflows are far too complex to be effectively managed with pictures [visual programming]. We are very happy to see a workflow system with full programming capability from Cisco.’

## [Workflow development]:

‘The serverless workflow domain specific language (DSL), dictates how a workflow should be constructed

- triggers, actions, flow, logic, etc
- what you’d expect to find in process modelling language.’

## [Adapter development]:

‘Currently requires expertise with

- The Go Language ...
- The target system API ...

For people with knowledge in those respective areas, the process is rather uncomplicated.’

## [Focus on increased Automation]

‘With shrinking budgets for governance, over the next 5 yrs we are shifting budget from personnel to tools, expecting to transition to 70% of the governance budget going to automation tools [currently at 40%.]’



# CWM Product Development

Cross-product collaboration across multiple Cisco teams

Within Engineering:

- Shared knowledge & experience
- Sharing of best practices
- Sharing of components, as applicable

Across the board:

- Strong collaboration with Cisco Services Team
- Strong collaboration with Cisco Automation field specialists
- Market input

# The CWM Product Team attendees



Fredric Zeisig – Engineering Manager

- Built NSO NED Team
- Managing CWM Dev and Test team
- Engineering Locations:
  - Stockholm, Sweden (coresident with NSO team)
  - UK
  - Krakow, Poland
  - Bucharest, Romania



Jay Kurji – Technical Leader

- One of our leading architects for CWM
- Based in UK



Lou Menditto – Product Line Manager

- 27yrs at Cisco
- Former Engineering Manager
- Launched multiple products
- Based in RTP, NC USA



Dimitris V - Technical Marketing Engineer

- Extensive experience with Cisco automation products, including NSO and Crosswork
- Based in Alpharetta, GA USA

# Team mission

## Product:

- Delivery of on-prem Workflow Manager product
  - Including software infrastructure
  - Easy Installation, Small footprint
  - Adapters for integration, plus SDK to enable bespoke adapter development
  - Sample workflows, to be used to facilitate understanding
- To date, have delivered 2 internal Beta releases, with first public release intended to come in the next few weeks

## Release strategy:

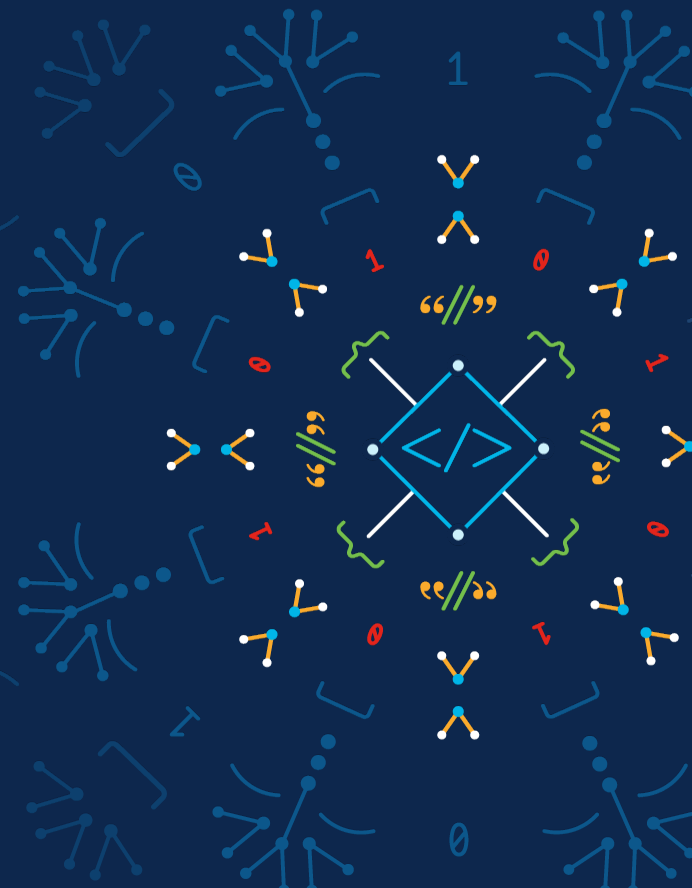
- Rapid feature development with release cadence of 3-4 months
- Additional adapters, prioritized by market demand
  - Would like to facilitate sharing of customer-contributed adapters as they become available



# How to throw a party

A way to reach first customer shipment

Fredric Zeisig  
Engineering Lead  
May 2023



# The party thrower



- Predictable
- Great work environment

# The proposal

- Versatile team
- Know the ask
- Come with a suggestion



# The rehearsal

- Be inspired by what you have
- Adapt and improve
- Show results – it helps!



# The party



- Expand our automation journey
- Capitalize on culture and people
- Be the number one party
  
- Thank you!





The bridge to possible

- General questions about Crosswork Workflow Manager  
Please email them to [cs-cwm@external.cisco.com](mailto:cs-cwm@external.cisco.com)
- To arrange a lab trial, please contact your Cisco Account Manager