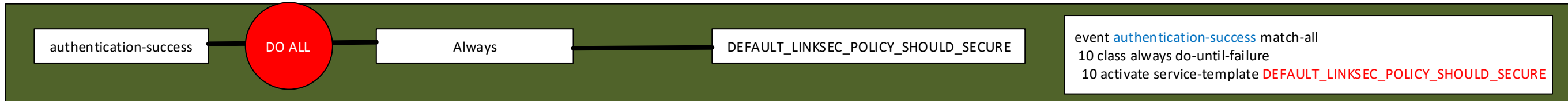
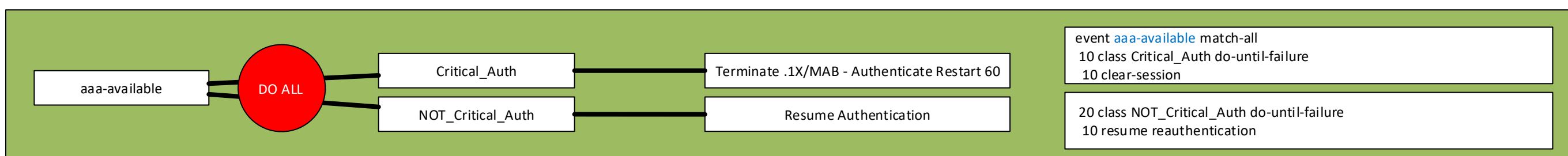
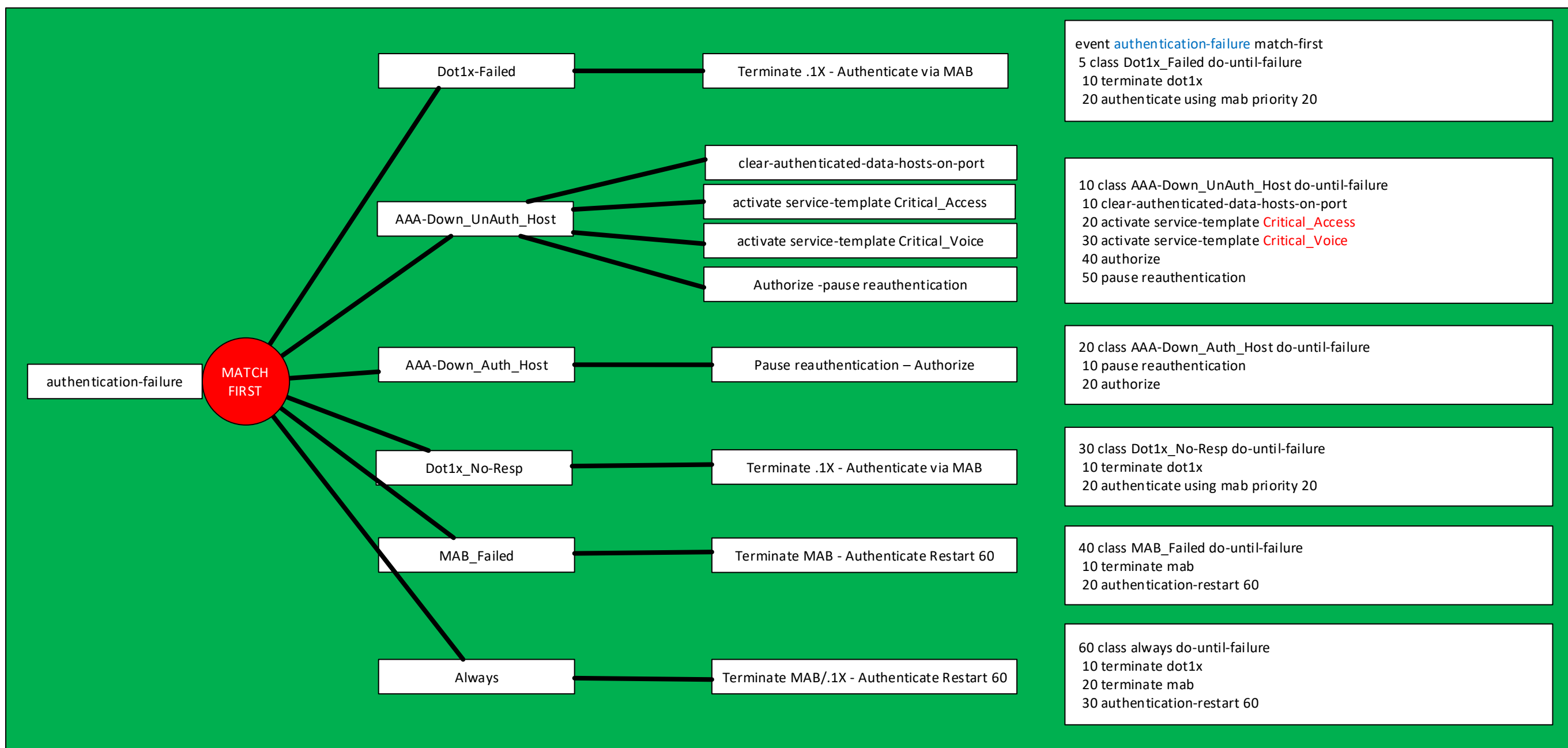
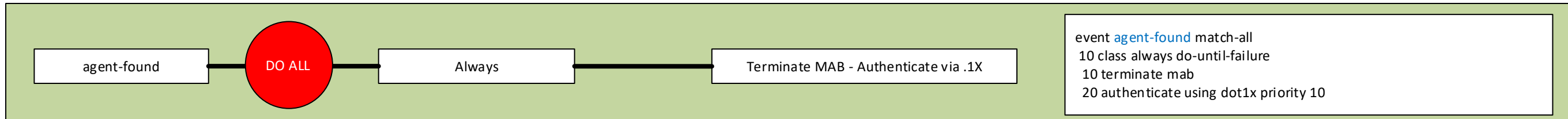
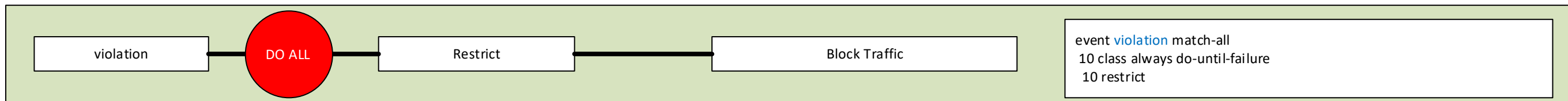
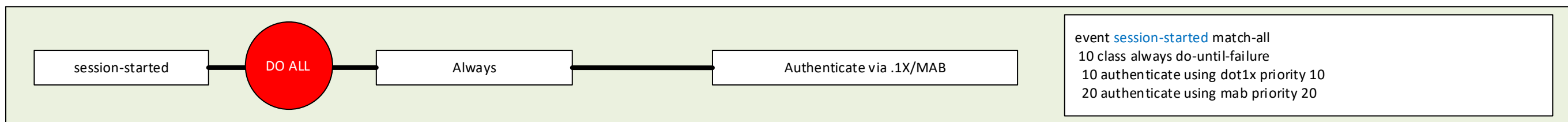


EVENT

CLASS

ACTION

IDENTITY CONTROL POLICY



Service Templates

```

service-template CRITICAL
description Apply when no RADIUS servers are available
access-group AAA-Down
service-template DEFAULT_LINKSEC_POLICY_MUST_SECURE
linksec policy must-secure
service-template DEFAULT_LINKSEC_POLICY_SHOULD_SECURE
linksec policy should-secure
service-template DEFAULT_CRITICAL_VOICE_TEMPLATE
voice vlan
service-template Critical_Access
access-group AAA-Down
vlan 100
service-template Critical_Voice
voice vlan
  
```

```

ip access-list extended AAA-Down
permit ip any any
  
```

Interface Templates

```

template IBNS2.0_CAMERAS
template IBNS2.0_STATIC
template IBNS2.0_WIRELESS
template IBNS2.0_WORKSTATIONS
  
```

```

Examples BCF WORKSTATION TEMPATE
template IBNS2.0_WORKSTATIONS
dot1x pae authenticator
dot1x timeout tx-period 7
dot1x max-reauth-req 3
spanning-tree portfast
switchport access vlan 100
switchport mode access
switchport negotiate
switchport voice vlan 200
trust device cisco-phone
mab
access-session host-mode multi-domain
access-session port-control auto
authentication periodic
authentication timer reauthenticate server
service-policy type control subscriber Dot1x-Default
service-policy input AutoQos-4.0-CiscoPhone-Input-Policy
service-policy output AutoQos-4.0-Output-Policy
subscriber aging probe
description WORKSTATIONS
ip dhcp snooping limit rate 100
  
```

Running configuration doesn't show all interface configs, use "show derived-config" exec command

```

interface GigabitEthernet0/46
source template IBNS2.0_WORKSTATIONS
  
```

```

sh policy-map type control subscriber detail
  
```

```

switch#sh access-session int gi1/0/13 detail
  
```

```

set platform software trace smd switch active R0 radius debug
set platform software trace smd switch active R0 aaa debug
set platform software trace smd switch active R0 dot1x-all debug
set platform software trace smd switch active R0 pre-all debug
set platform software trace smd switch active R0 epm-all debug
  
```

```

show platform software trace message smd switch active R0
  
```